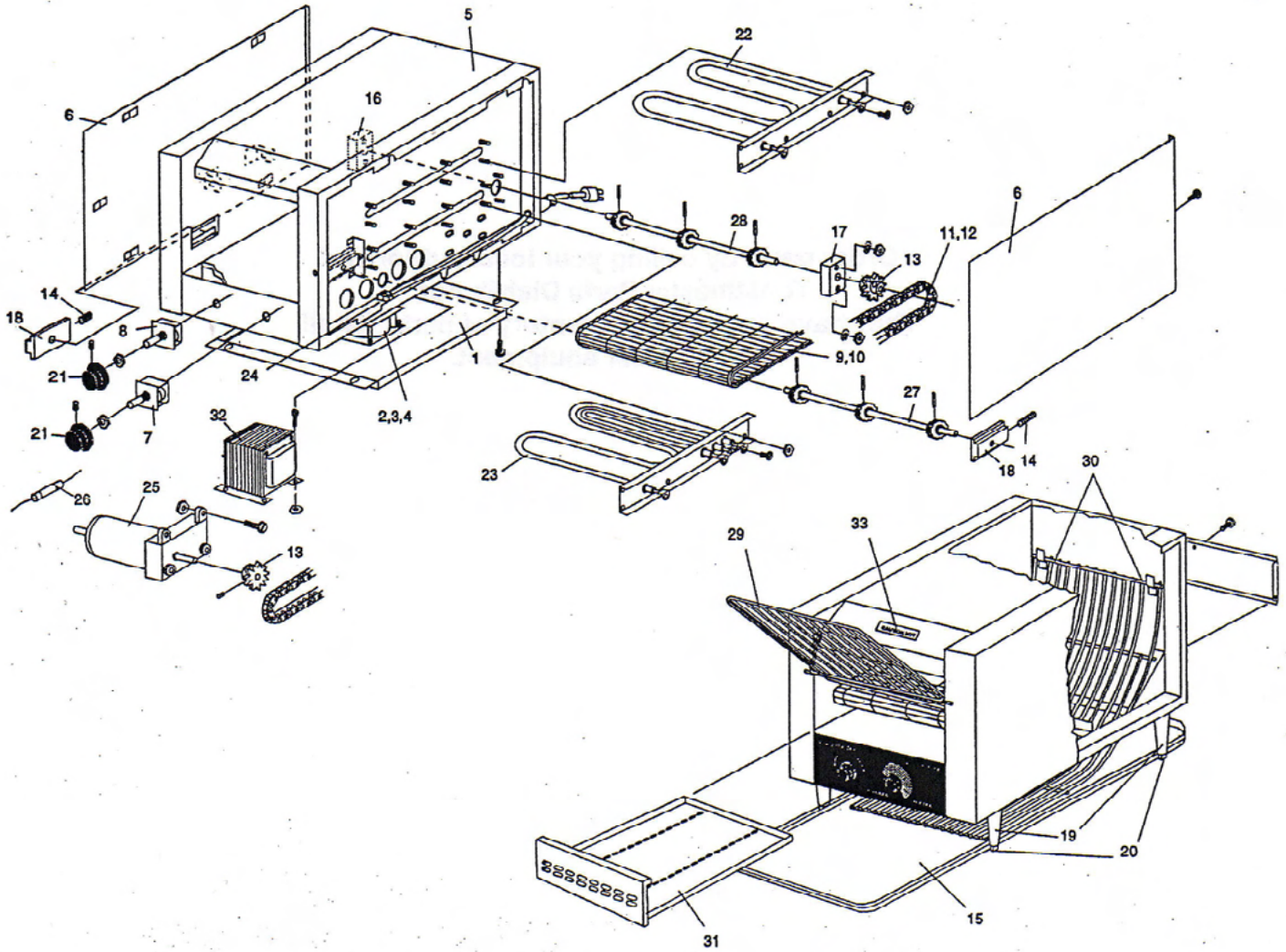


SECTION 4 - PARTS LIST



Model TC14
Overall Exploded Drawing
Figure 4-1

SECTION 4 - PARTS LIST

January 5, 2011

MODEL TC14: Overall Exploded Drawing Parts List			
Item	Qty	Part No.	Description
1	1	32440 NLA	BOTTOM PANEL
2	1	2U-27392-0002	FAN AXIAL 115V 110CFM
3	1	2R-27470-0004	GUARD, FAN
4	1	2C-4005A8801	SCR,MS PH PN HD 10-32X3/8
5	1	32387 NLA	TOP PANEL
6	2	33253 NLA	WELDMENT SIDE COVER
7	1	2E-3002808	SPEED CONTROLLER, SPEED DCV
8	1	PS-TC0047	KIT, 3POS. ROT SWITCH RPL
9	1	2B-33393	BELTING, WIRE 3/8P/10INW
10	1	2C-33394	LINK, WIRE 3/8
11	1	2P-43224	CHAIN, ROLLER 16 1/4" 120V
		7007605 NLA	CHAIN, 15"LG 208V
12	1	2C-3101212	LINK, MASTER #25 ROLLER CH
13	2	2P-3103426	SPROCKET 25B16-5/16
14	2	2P-3103262	SPRING, COMPRESSION ZINC
15	1	2D-33391	PAN, CRUMB LOWER TC14
16	1	2A-7006963	BLOCK, LEFT REAR BEARING
17	1	2P-7006964	BEARING, BLOCK MOTOR
18	2	2P-7008178	BEARING, BLOCK FRONT
19	4	2R-1523B8301	LEG, 4IN BLACK PLASTIC
20	4	2P-31254	CUP, FOOT CUT DOWN
21	2	2R-33402	KNOB, CONTROLS (TC14)
22	1	2N-33404	ELEMENT, HEATING 120V
	1	33422 NLA	TOP HEATING ELEMENT 208V, 1060W
	1	33424 NLA	TOP HEATING ELEMENT 240V, 1060W
23	1	2N-33405	ELEMENT, HTG 120V 860/250W
	1	2N-33423	ELEMENT, HTG 208V 1060/250W
	1	2N-33425	ELEMENT, HTG 240V 1060/250W
24	1	2E-33406	BLOCK, TERM 3-POLE
25	1	2U-31615	ASSY, MOTOR BREAKER
26	1	2E-31053	FUSE, .25A 125VAC
27	1	J6-33396	ASSY,SHAFT FRONT TC14
28	1	33397 NLA	REAR SHAFT ASSEMBLY
29	1	2B-33410	RACK, ENTRANCE TC14
30	1	33411 NLA	EXIT RACK
31	1	J6-27-9000	ASSY, CRUMB PAN
32	1	2E-30697	TRANSFORMER, 230VP/115V
33	1	2M-321049	LABEL,CAUTION HOT