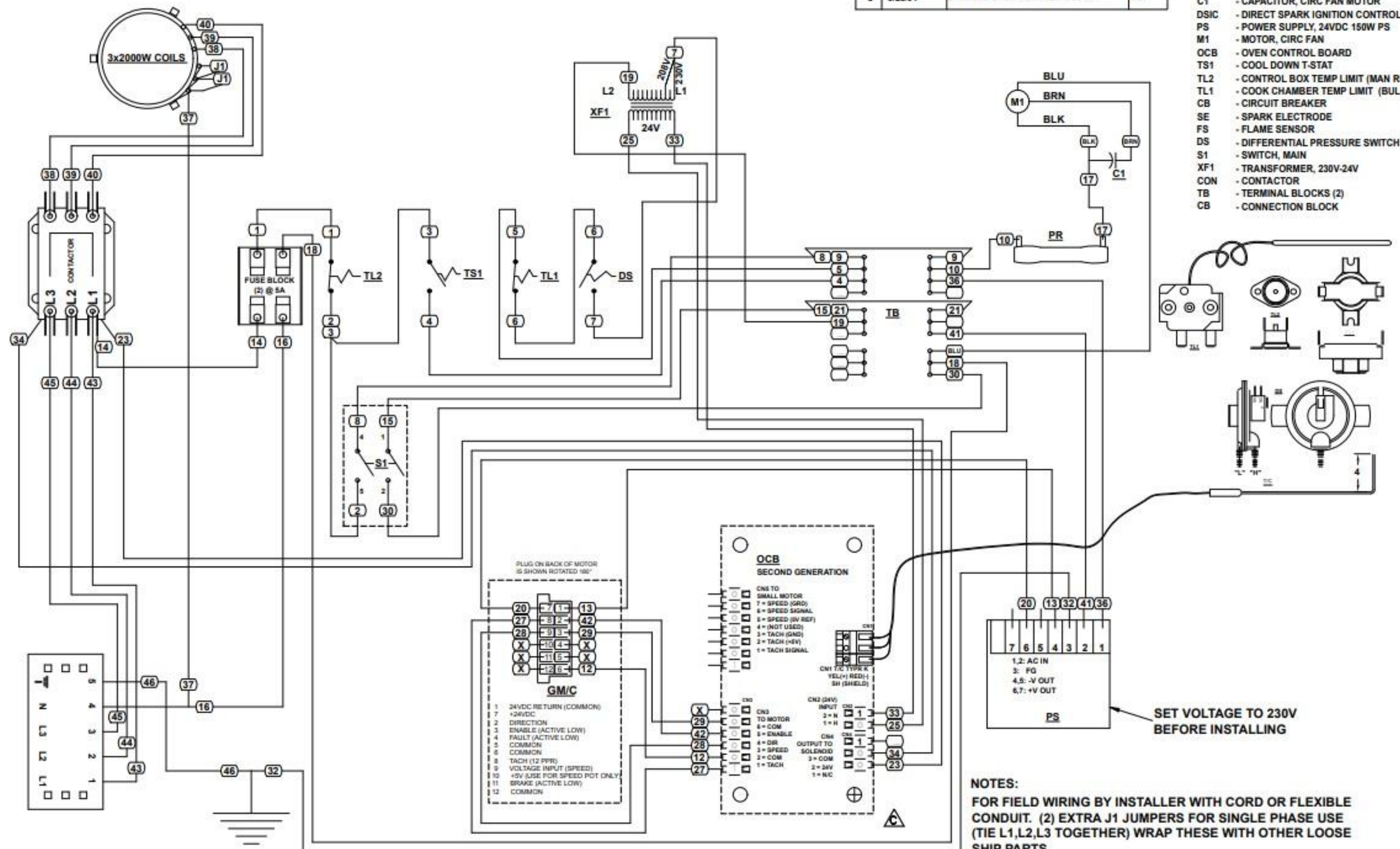


UM-1833 WIRING DIAGRAM, 3PH, 4-WIRE



REVISIONS	LTR	DATE	DESCRIPTION OF CHANGE	
A	09/15/03		ADD 2ND GENERATION CONTROLLER	RDL
B	03/26/04		SHOW BEND IN T/C FOR NEW MOUNT	RDL
C	9/23/04		UPDATED OVEN CONTROL BOARD	CG

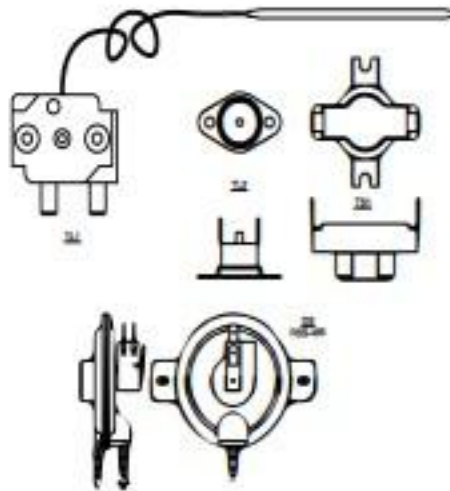
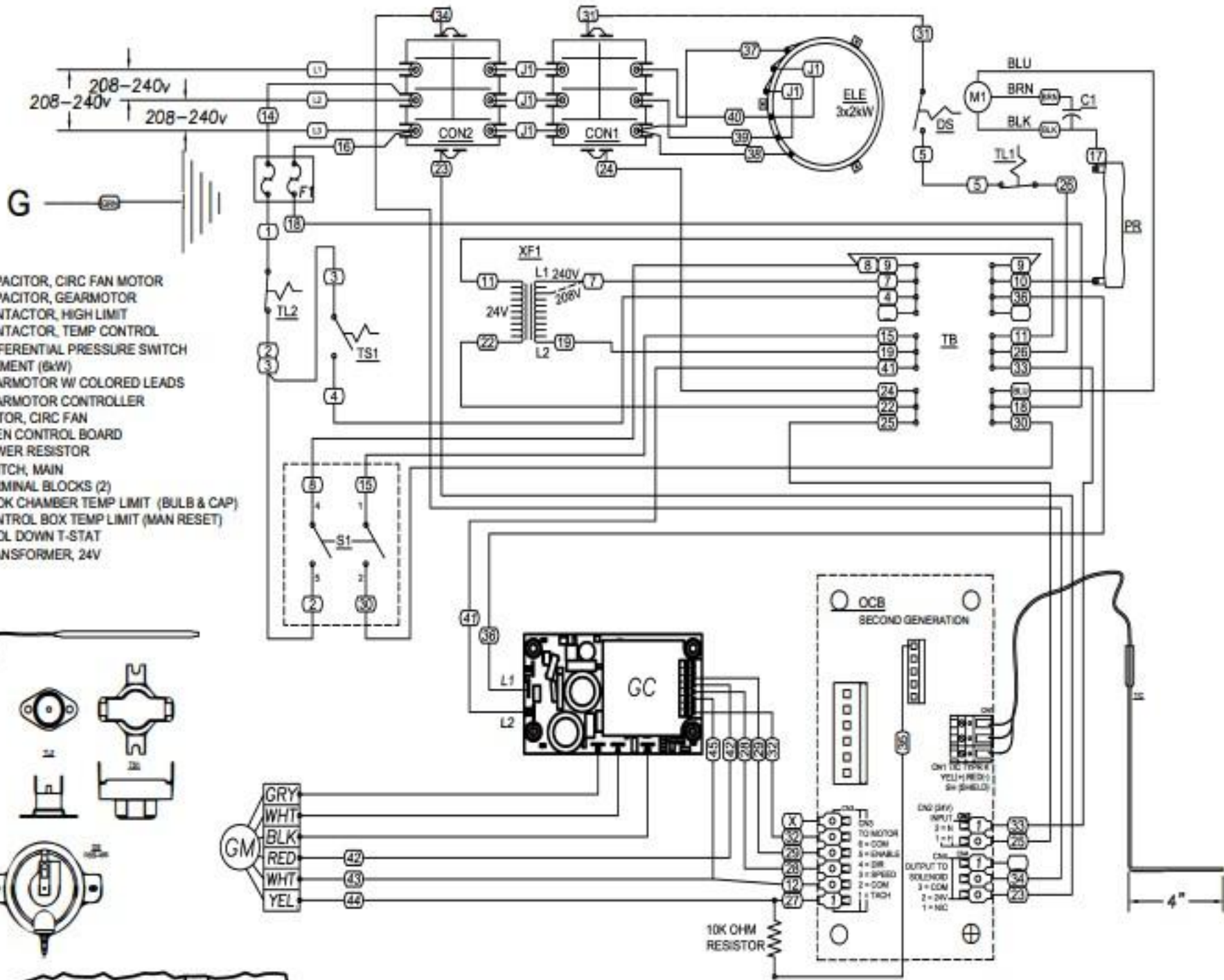
- GM/C - GEARMOTOR & CONTROLLER
- C1 - CAPACITOR, CIRC FAN MOTOR
- DSIC - DIRECT SPARK IGNITION CONTROLLER
- PS - POWER SUPPLY, 24VDC 150W PS
- M1 - MOTOR, CIRC FAN
- OCB - OVEN CONTROL BOARD
- TS1 - COOL DOWN T-STAT
- TL2 - CONTROL BOX TEMP LIMIT (MAN RESET)
- TL1 - COOK CHAMBER TEMP LIMIT (BULB & CAP)
- CB - CIRCUIT BREAKER
- SE - SPARK ELECTRODE
- FS - FLAME SENSOR
- DS - DIFFERENTIAL PRESSURE SWITCH
- S1 - SWITCH, MAIN
- XF1 - TRANSFORMER, 230V-24V
- CON - CONTACTOR
- TB - TERMINAL BLOCKS (2)
- CB - CONNECTION BLOCK



SET VOLTAGE TO 230V BEFORE INSTALLING

**NOTES:**  
 FOR FIELD WIRING BY INSTALLER WITH CORD OR FLEXIBLE CONDUIT. (2) EXTRA J1 JUMPERS FOR SINGLE PHASE USE (TIE L1,L2,L3 TOGETHER) WRAP THESE WITH OTHER LOOSE SHIP PARTS

- C1 - CAPACITOR, CIRC FAN MOTOR
- C2 - CAPACITOR, GEARMOTOR
- CON1 - CONTACTOR, HIGH LIMIT
- CON2 - CONTACTOR, TEMP CONTROL
- DS - DIFFERENTIAL PRESSURE SWITCH
- ELE - ELEMENT (6kW)
- GM - GEARMOTOR W/ COLORED LEADS
- GC - GEARMOTOR CONTROLLER
- M1 - MOTOR, CIRC FAN
- OCB - OVEN CONTROL BOARD
- PR - POWER RESISTOR
- S1 - SWITCH, MAIN
- TB - TERMINAL BLOCKS (2)
- TL1 - COOK CHAMBER TEMP LIMIT (BULB & CAP)
- TL2 - CONTROL BOX TEMP LIMIT (MAN RESET)
- TS1 - COOL DOWN T-STAT
- XF1 - TRANSFORMER, 24V



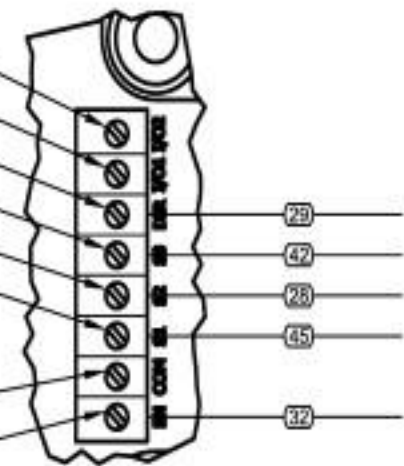
GRAY WIRE FROM MOTOR  
GOES TO "U" CONNECTOR  
ON BOARD

BLACK WIRE FROM MOTOR  
GOES TO "W" CONNECTOR  
ON BOARD

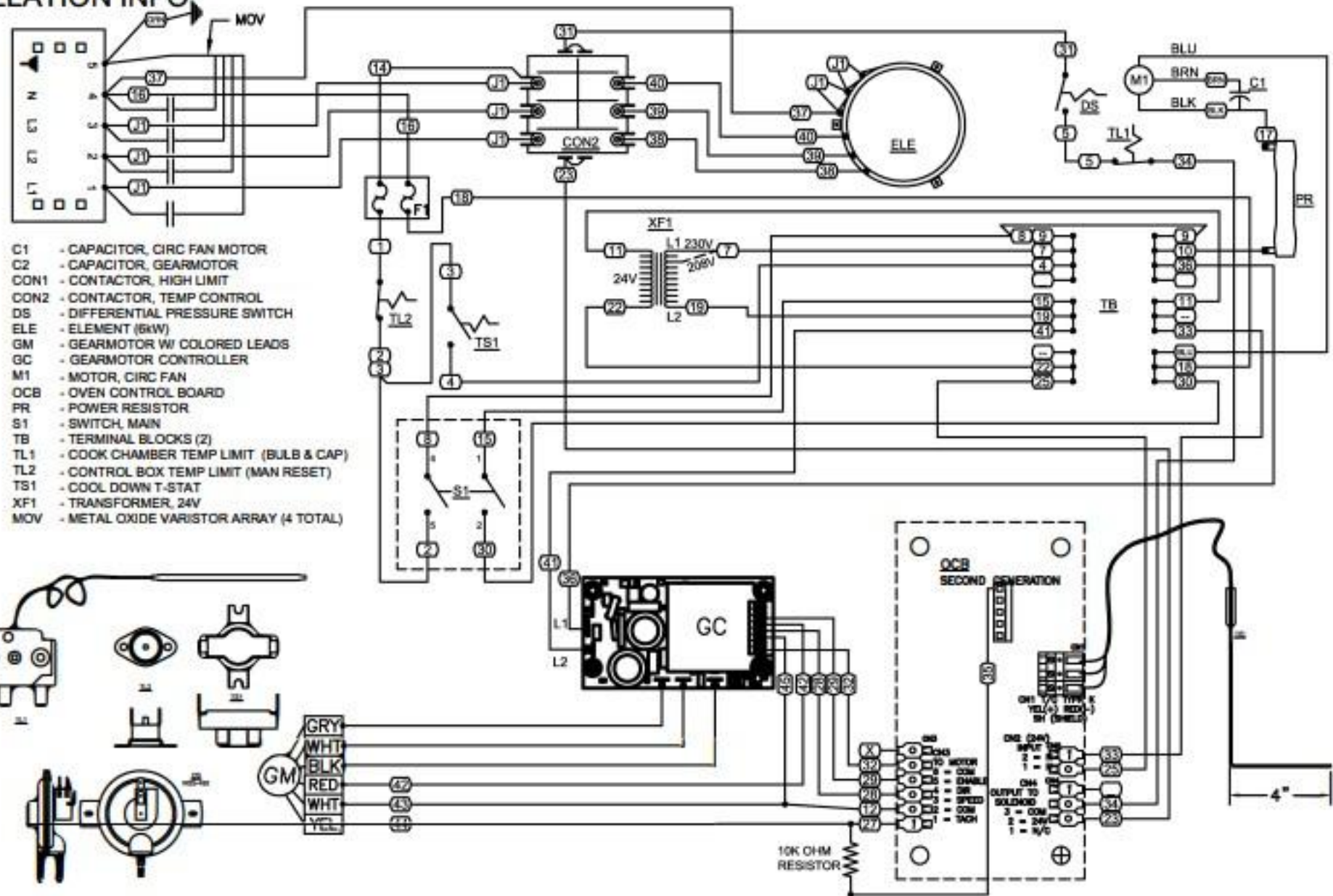
WHITE WIRE FROM MOTOR  
GOES TO "V" CONNECTOR  
ON BOARD

### GEARMOTOR CONTROLLER WIRING DETAIL

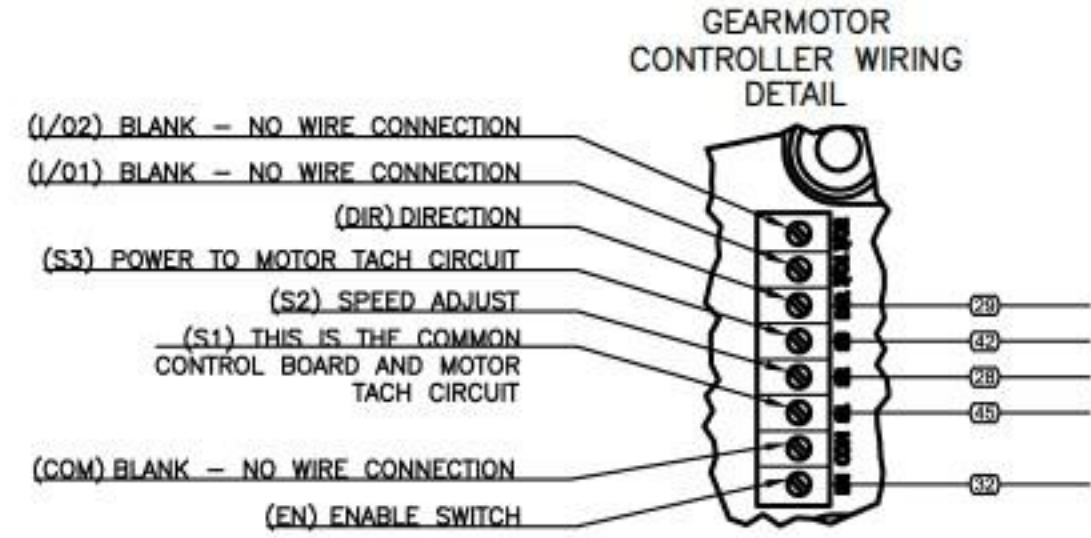
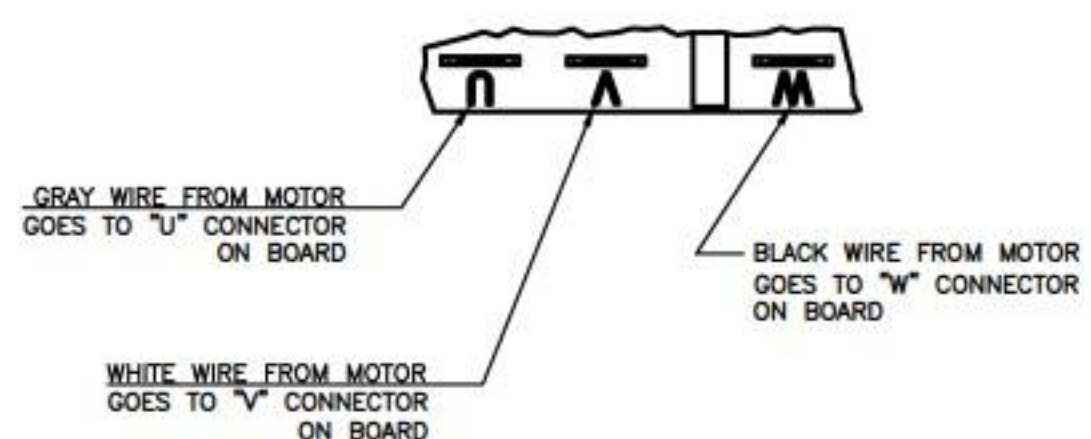
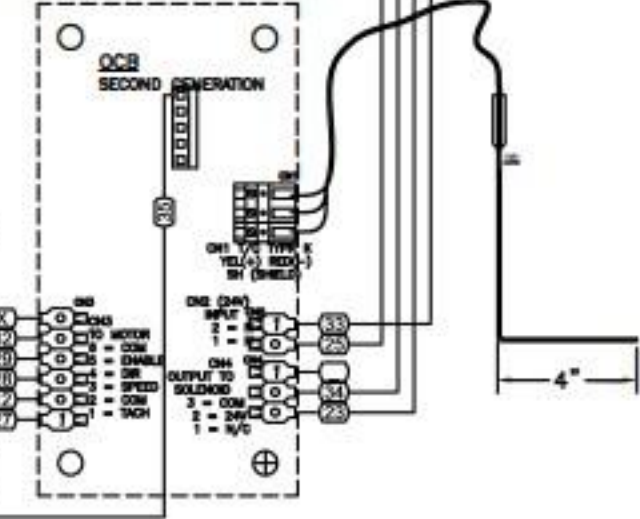
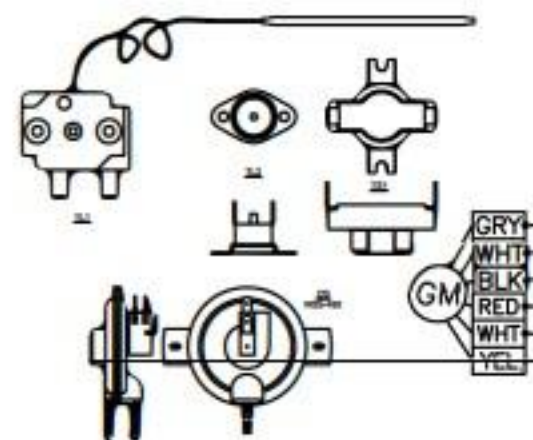
- (1/02) BLANK - NO WIRE CONNECTION
- (1/01) BLANK - NO WIRE CONNECTION
- (DIR) DIRECTION
- (S3) POWER TO MOTOR TACH CIRCUIT
- (S2) SPEED ADJUST
- (S1) THIS IS THE COMMON  
CONTROL BOARD AND MOTOR  
TACH CIRCUIT
- (COM) BLANK - NO WIRE CONNECTION
- (EN) ENABLE SWITCH



INCLUDE THIS PRINTED DIAGRAM  
W/ MANUAL & INSTALLATION INFO



- C1 - CAPACITOR, CIRC FAN MOTOR
- C2 - CAPACITOR, GEARMOTOR
- CON1 - CONTACTOR, HIGH LIMIT
- CON2 - CONTACTOR, TEMP CONTROL
- DS - DIFFERENTIAL PRESSURE SWITCH
- ELE - ELEMENT (6kW)
- GM - GEARMOTOR W/ COLORED LEADS
- GC - GEARMOTOR CONTROLLER
- M1 - MOTOR, CIRC FAN
- OCB - OVEN CONTROL BOARD
- PR - POWER RESISTOR
- S1 - SWITCH, MAIN
- TB - TERMINAL BLOCKS (2)
- TL1 - COOK CHAMBER TEMP LIMIT (BULB & CAP)
- TL2 - CONTROL BOX TEMP LIMIT (MAN RESET)
- TS1 - COOL DOWN T-STAT
- XF1 - TRANSFORMER, 24V
- MOV - METAL OXIDE VARISTOR ARRAY (4 TOTAL)



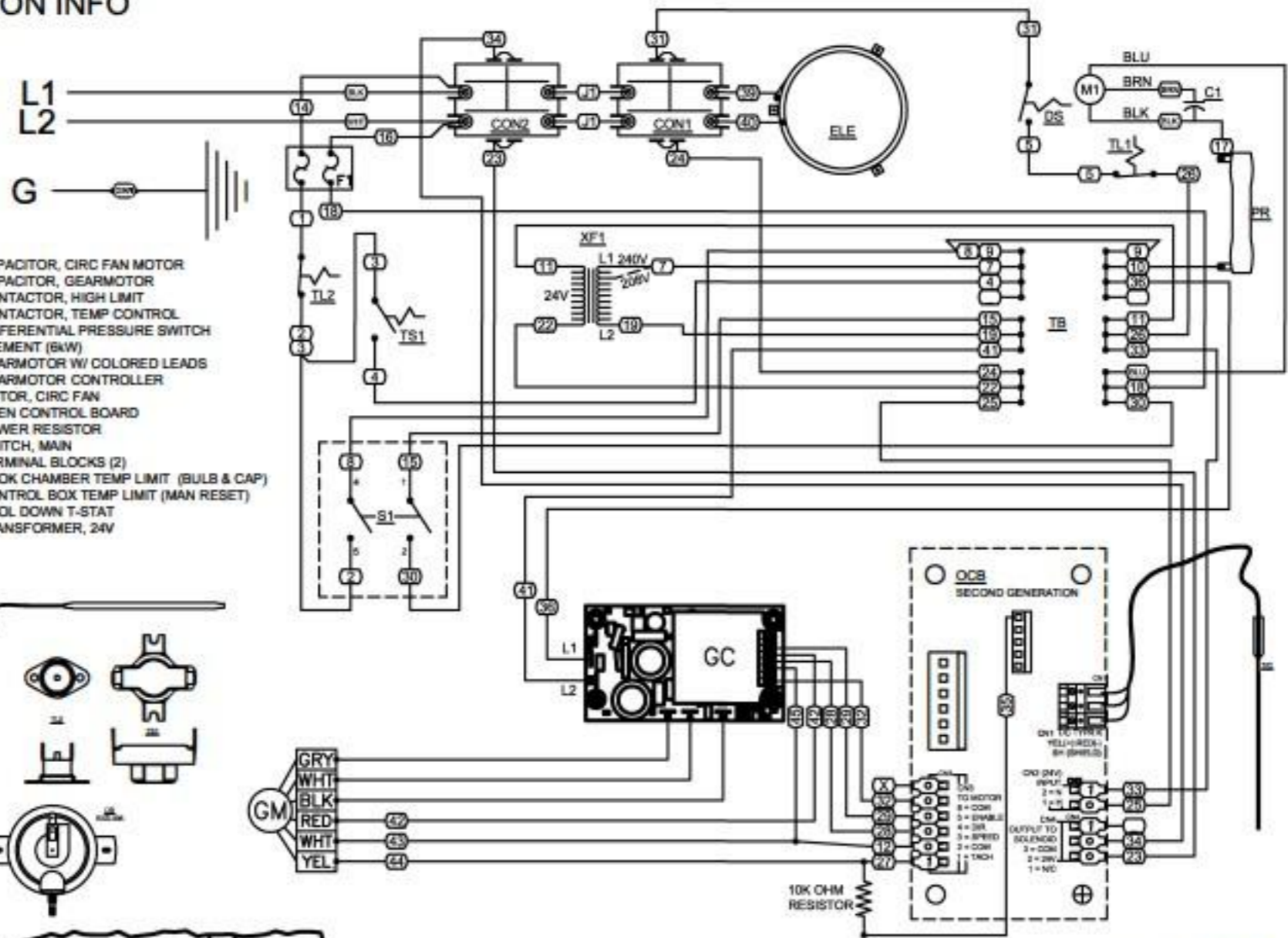
CUSTOMER RESPONSIBLE FOR FINAL  
INSTALLATION PER LOCAL CODES.  
DEDICATED 3Ø 20A CIRCUIT REQUIRED.  
CORD OR CONDUIT CONNECTED AS  
ALLOWED/REQUIRED BY LOCAL CODE.

MODEL: UME 230/3Ø

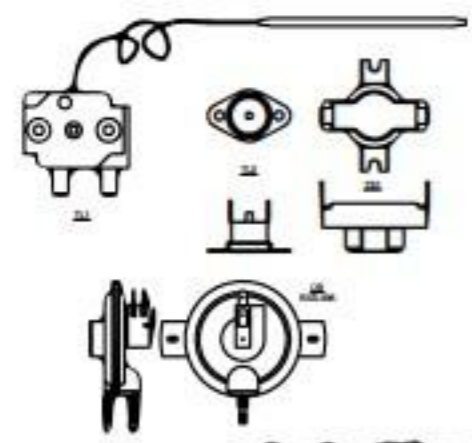
STAR MANUFACTURING INTERNATIONAL, INC.  
2M-Z13288 rev B 01-31-2018 DR: JT



INCLUDE THIS PRINTED DIAGRAM  
W/ MANUAL & INSTALLATION INFO



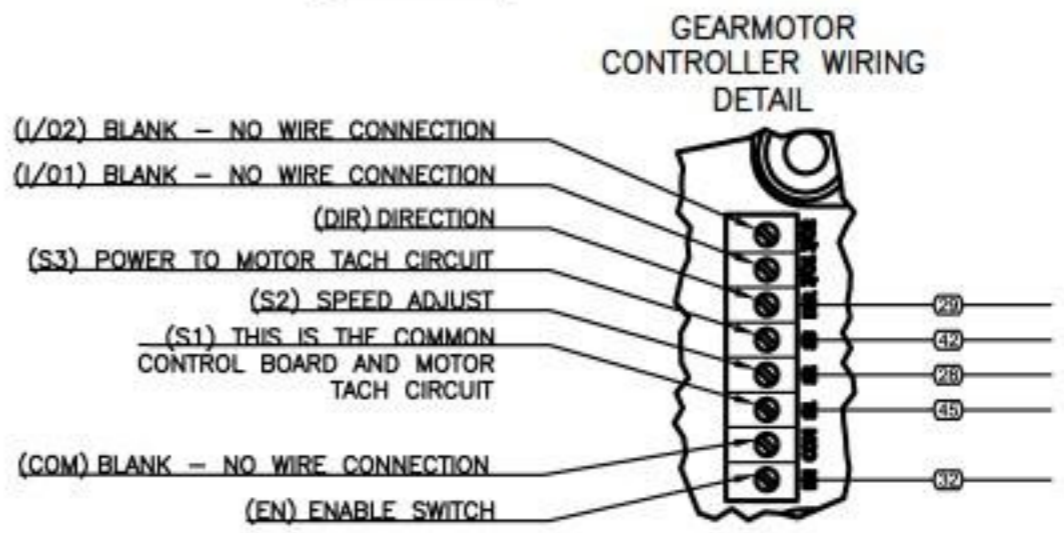
- C1 - CAPACITOR, CIRC FAN MOTOR
- C2 - CAPACITOR, GEARMOTOR
- CON1 - CONTACTOR, HIGH LIMIT
- CON2 - CONTACTOR, TEMP CONTROL
- DS - DIFFERENTIAL PRESSURE SWITCH
- ELE - ELEMENT (BKW)
- GM - GEARMOTOR W/ COLORED LEADS
- GC - GEARMOTOR CONTROLLER
- M1 - MOTOR, CIRC FAN
- OCB - OVEN CONTROL BOARD
- PR - POWER RESISTOR
- S1 - SWITCH, MAIN
- TB - TERMINAL BLOCKS (2)
- TL1 - COOK CHAMBER TEMP LIMIT (BULB & CAP)
- TL2 - CONTROL BOX TEMP LIMIT (MAN RESET)
- TS1 - COOL DOWN T-STAT
- XF1 - TRANSFORMER, 24V



GRAY WIRE FROM MOTOR  
GOES TO "U" CONNECTOR  
ON BOARD

BLACK WIRE FROM MOTOR  
GOES TO "W" CONNECTOR  
ON BOARD

WHITE WIRE FROM MOTOR  
GOES TO "V" CONNECTOR  
ON BOARD



CUSTOMER RESPONSIBLE FOR FINAL  
INSTALLATION PER LOCAL CODES.  
DEDICATED 1Ø 50A CIRCUIT REQUIRED.  
NEMA 6-50 CORD SUPPLIED

MODEL: UME 208-240/1Ø

STAR MANUFACTURING INTERNATIONAL, INC.  
2M-Z13287 REV B 1/31/2018 DR: JT

