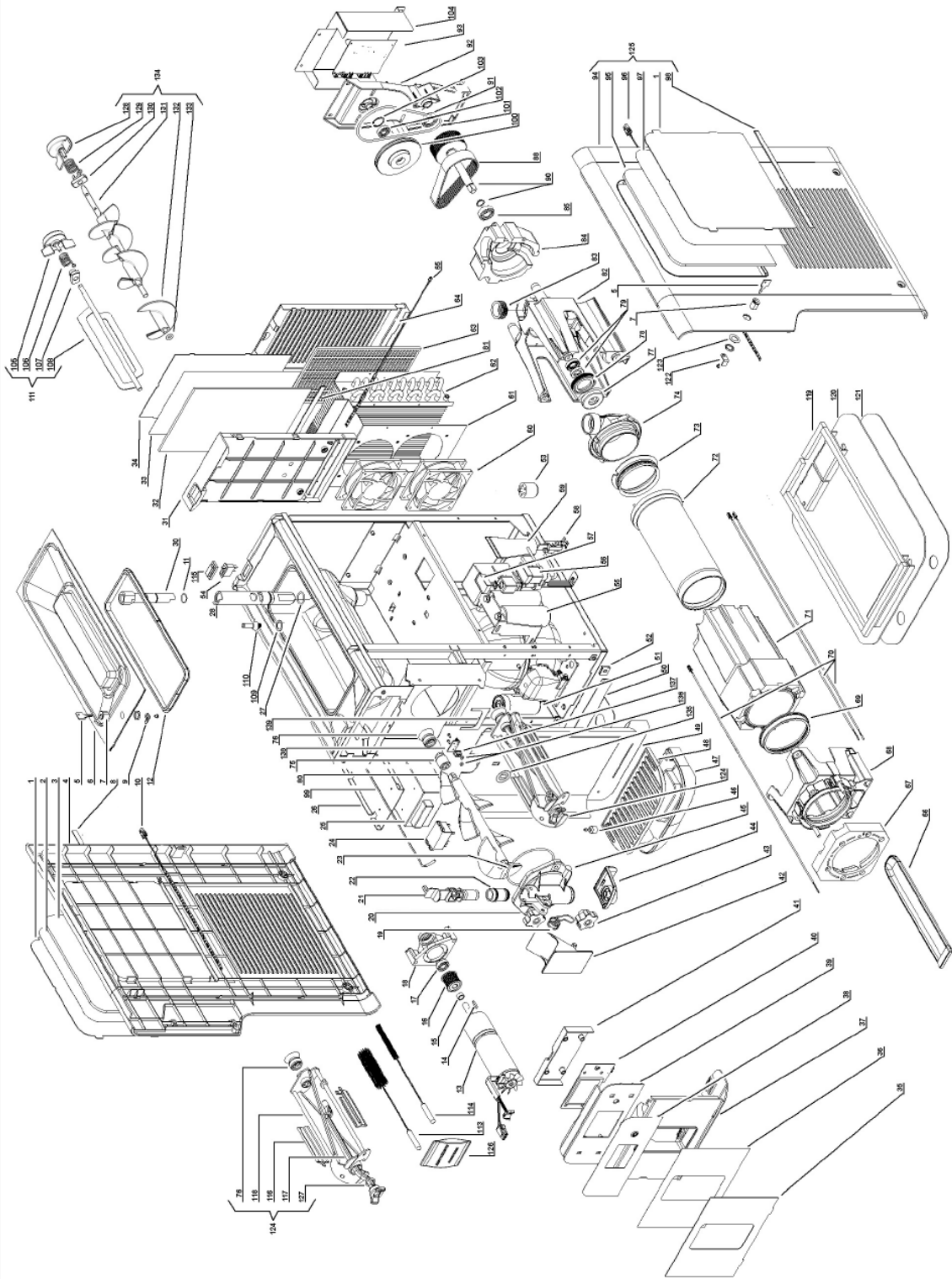


Exploded View Parts List

Valid Unit

C111-37



ITEM	STOELTING PART NUMBER	STOELTING DESCRIPTION
1	BR0032	PANEL – SIDE (TRANSPARENT)
2		
3a	BR0033	LIGHTED SCREEN (BOTH SIDES)
3b	BR0034	SPACER SCREEN – UNLIT - L.H. SIDE
4		
5	BR0035	KEY - LOCK
6	BR0312	COVER – TOP (BLACK)
7	BR0036	LOCK - TOP COVER
8	BR0037	DECAL – L.H. SIDE
9	BR0038	LOCK HANDLE
10	BR0039	LED STRIP - LIGHTED L.H. PANEL
11	BR0040	O-RING – UPPER CARBURETOR
12	BR0015	SEAL – HOPPER COVER
13	BR0016	GEAR MOTOR
14	BR0041	GEAR MOTOR SHAFT TAB
15	BR0042	PULLEY SPACER – GEAR MOTOR
16	BR0043	PULLEY – GEAR MOTOR
17	BR0002	BEARING – MOTOR SUPPORT
18	BR0044	MOTOR SUPPORT
19	BR0007	SPIGOT SPRING
20	BR0008	FRONT DOOR
21	BR0009	SPIGOT BODY
22	BR0010	SPIGOT BODY SEAL
23	BR0011	O-RING – FRONT DOOR
24	BR0017	RELAY
25	BR0045	BALLAST
26	BR0046	BALLAST BRACKET
27	BR0003	O-RING – LOWER CARBURETOR
28	BR0018	CARBURETOR - LOWER
30	BR0019	CARBURETOR - UPPER
31	BR0048	SPACER SCREEN – UNLIT - REAR
32	BR0047	LIGHTED SCREEN - REAR
33	BR0049	IMAGE SCREEN - REAR
34	BR0050	PANEL – REAR (TRANSPARENT)
35	BR0051	PANEL – FRONT (TRANSPARENT)
36		
37		
38		

39	BR0052	DISPLAY BOARD SUPPORT
40	BR0020	DISPLAY BOARD
41	BR0053	DISPLAY BOARD REAR COVER
42	BR0021	SPIGOT HANDLE - BLACK
43	BR0054	KNOB – FRONT DOOR (BLACK)
44	BR0055	ROSETTE – PRODUCT FLOW LIMITER
45	BR0022	SPIGOT LOCKING PIN - WHITE
46	BR0023	DRIP TRAY FLOAT LEVEL
47	BR0028	DRIP TRAY - BLACK
48	BR0029	DRIP TRAY COVER - BLACK
49		
50		
51		
52		
53	BR0057	LEG – 4”
53	BR0057	LEVELING FOOT
54	BR0030	SWITCH - 2-POSITION
55		
56	BR0024	SOLENOID VALVE COIL
57	BR0058	SOLENOID COIL COVER
58	BR0059	CABLE CLAMP
59	BR0060	TERMINAL BLOCK CABLE PROTECTOR
60	BR0006	MOTOR – FAN (24V)
61		
62		
63	BR0025	FILTER
64		
65	BR0061	LED STRIP – REAR PANEL
66	BR0031	DRAIN TARY - RED
67	BR0062	EVAPORATOR INSULATION - FRONT
68	BR0063	EVAPORATOR SUPPORT - FRONT
69	BR0064	EVAPORATOR SEAL - FRONT
70	BR0004	SENSOR - REED PROXIMITY
71		
72	BR0065	EVAPORATOR ONLY
73	BR0066	EVAPORATOR SEAL - REAR
74	BR0067	EVAPORATOR SUPPORT - REAR
75	BR0068	COUPLING – REAR AUGER
76	BR0001	SEAL – REAR AUGER
77	BR0069	EVAPORATOR REAR PLUG CUP

78	BR0070	EVAPORATOR REAR PLUG CAP SEAL
79	BR0071	PULLEY SHAFT SEAL RING - AUGER
80	BR0026	AUGER
81		
82	BR0072	EXTERNAL SUPPORT - REAR
83	BR0073	EVAPORATOR REAR INLET SEAL
84	BR0074	EVAPORATOR INSULATION - REAR
85	BR0075	PULLEY SHAFT BEARING (2)
86	BR0076	LOCK CLIP – AUGER PULLEY
87		
88	BR0005	BELT - AUGER
89		
90	BR0077	PULLEY - AUGER
91	BR0075	PULLEY SHAFT BEARING (2)
92	BR0079	PULLEY SUPPORT
93	BR0012	BOARD - POWER
94		
94		
94		
95	BR0033	LIGHTED SCREEN (BOTH SIDES)
96	BR0039	LED STRIP FOR LIGHTED SIDE PANEL
97	BR0082	PANEL – R.H. IMAGE
98	BR0083	DECAL – R.H. SIDE
99	BR0013	TEMPERATURE PROBE
100	BR0084	PULLEY HOPPEER MIXER ASSEMBLY
101	BR0014	BELT – HOPPER MIXER
102	BR0002	BEARING – MOTOR SUPPORT
103	BR0085	LOCK CLIP – MIXER PULLEY
104	BR0086	COVER - POWER BOARD
105		
106		
107		
108		
109	BR0091	SEAL – HOPPER SENSOR
110	BR0092	SENSOR – HOPPER LEVEL
111		
113	BR0094	BRUSH - LARGE
114	BR0095	BRUSH - SMALL
115	BR0096	SWITCH CAP
116		

117		
118		
119	BR0100	BASE
120	BR0101	BASE SEAL
121	BR0102	BASE LOWER STRIP
122	BR0103	LOCK HANDLE
123		
124		
125		
125		
125		
126		
127		
128		
129		
130		
131		
132		
133		
134	BR0027	MIXER ASSEMBLY COMPLETE - HOPPER
135		
136		
137	BR0110	CUP SENSOR INSERT
138		
139	BR0111	GASKET – DRAIN TRAY
140		
141	BR0027	MIXER ASSEMBLY COMPLETE - HOPPER
	BR0331	CARTON - OUTSIDE
	BR0332	CARTON BASE
	BR0333	CARTON SIDE PROTECTION
	BR0334	CARTON PALLET
	BR0335	COMPRESSOR (EMBRACO NEU 6215 GK)
	BR0336	CAPACITOR – START (#BR0335 EMBRACO COMPRESSOR
	BR0337	RELAY (#BR0335 EMBRACO COMPRESSOR)
	BR0338	MOTOR PROTECTOR (#BR0335 EMBRACO COMPRESSOR)