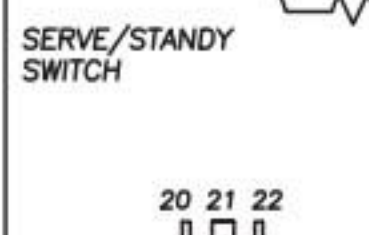
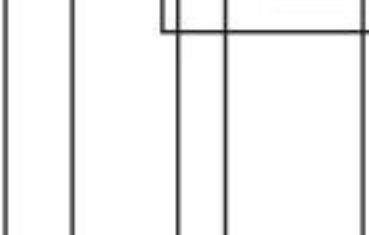
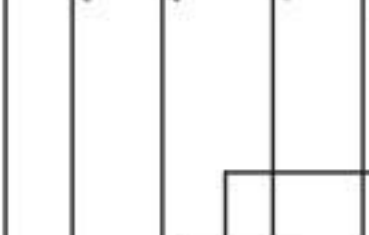
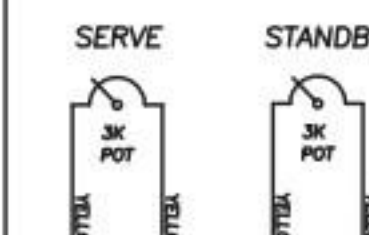
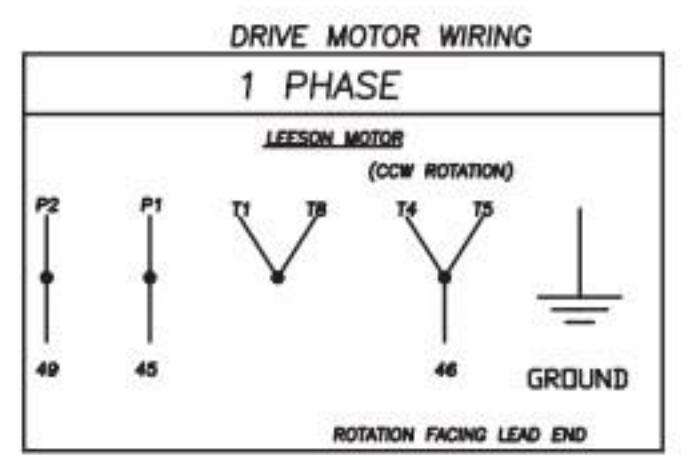
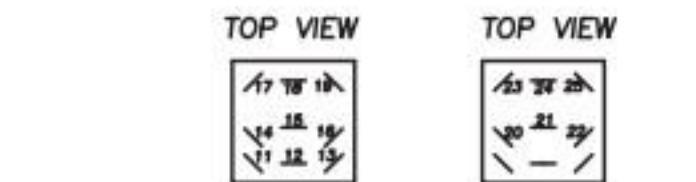
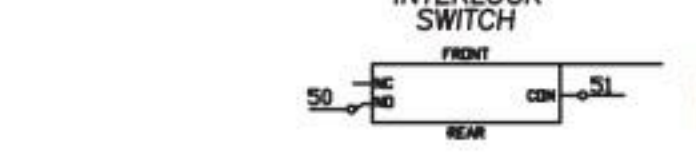
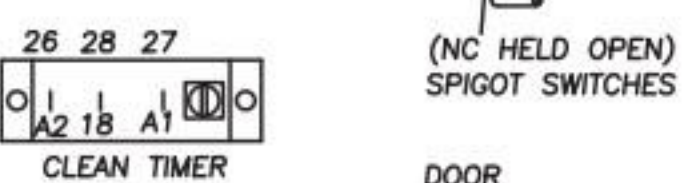
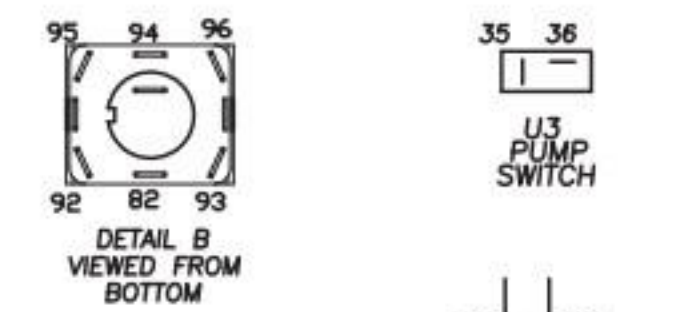
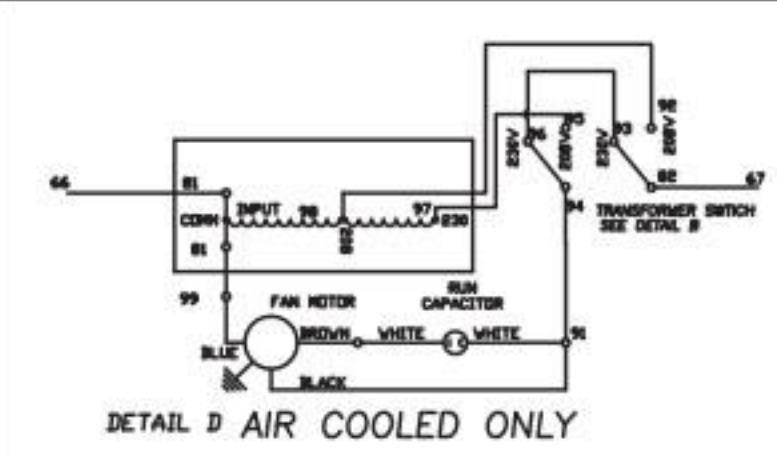


POTENTIOMETER SETTINGS				
AIR COOLED				
SOFTSERVE	SERVE-LEFT	SERVE-RIGHT	NIGHT-LEFT	NIGHT-RIGHT
2000	2000	2500	2300	
WATER COOLED				
SOFTSERVE	SERVE-LEFT	SERVE-RIGHT	NIGHT-LEFT	NIGHT-RIGHT
1400	1400	1900	1700	



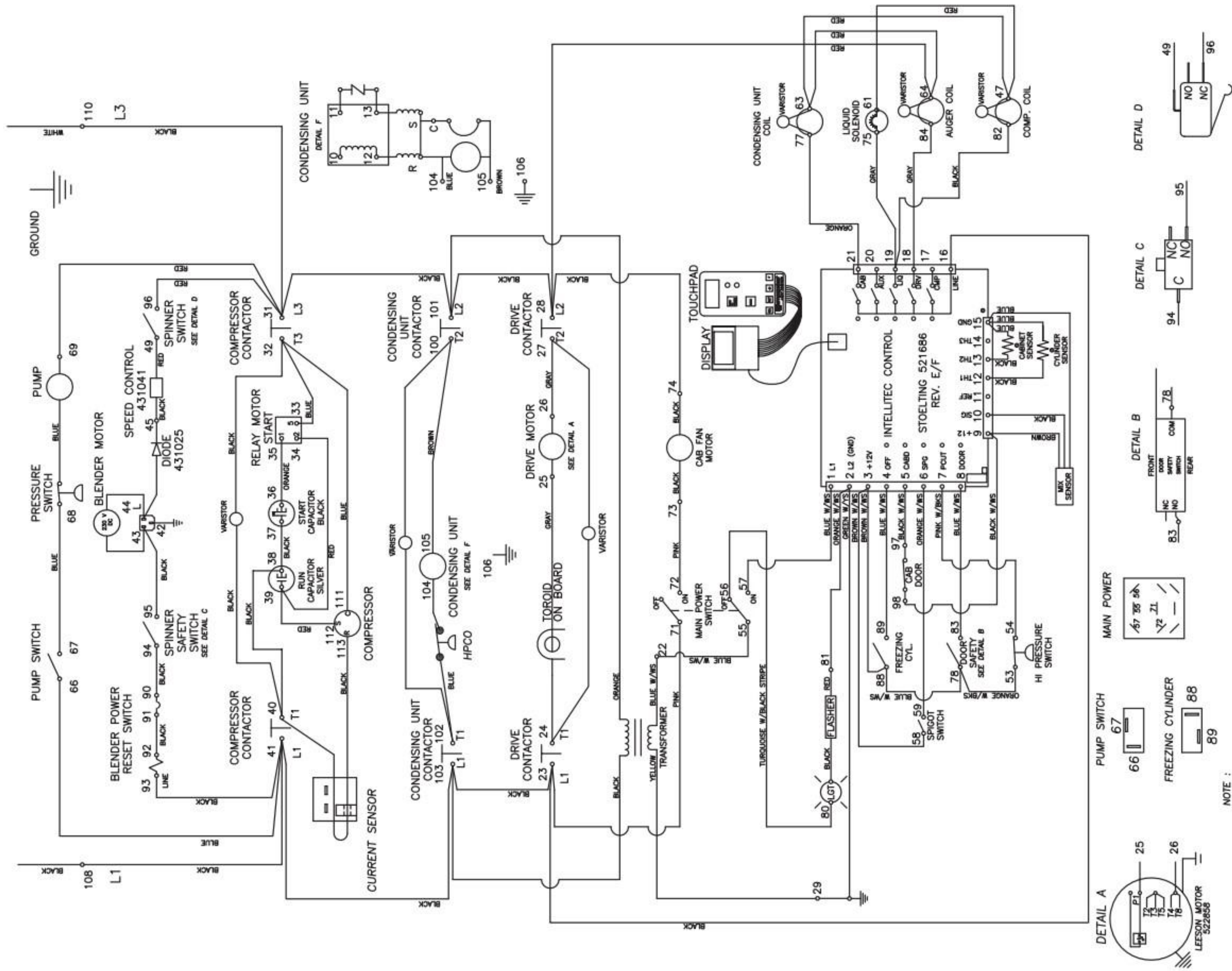
STOLING
KIEL, WISCONSIN U.S.A. 53042
ELECTRICAL WIRING DIAGRAM
MODEL: SU444-38, 18
REVISION NUMBER: 1

NOTE (A):
LEFT SIDE COMPRESSOR RUN WIRE MUST PASS THROUGH CURRENT SENSOR (2) TIMES AND RIGHT SIDE COMPRESSOR WIRE MUST PASS THROUGH (1) TIME. (AIR COOLED ONLY)

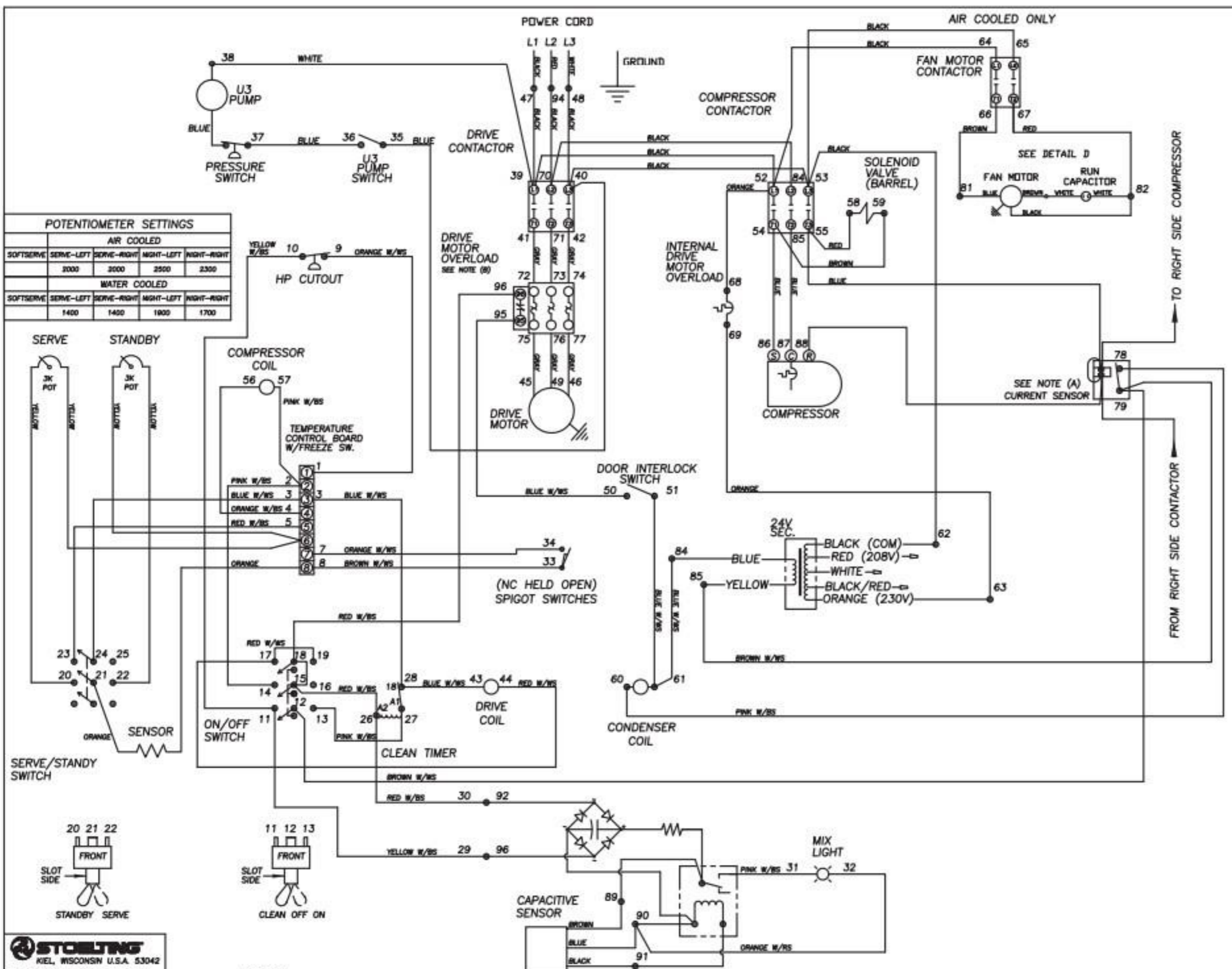


2202454L-WD

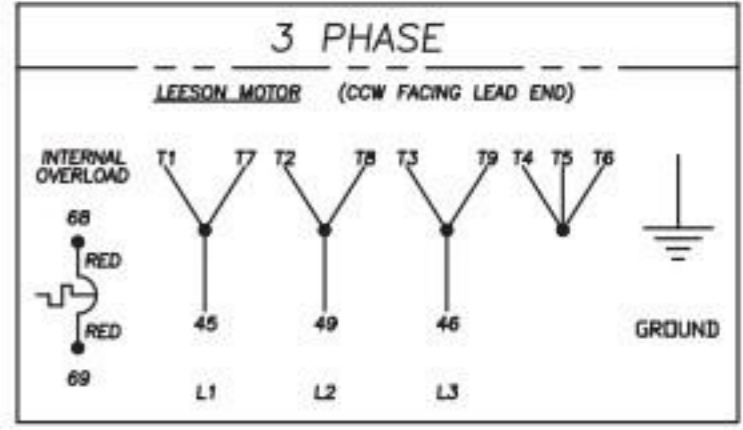
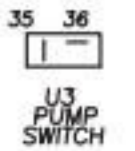
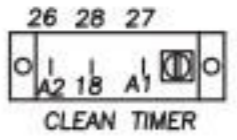
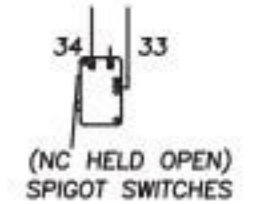
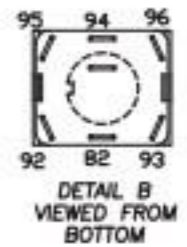
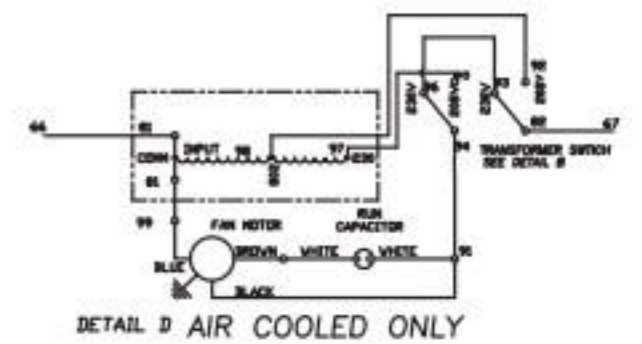
CAUTION
DISCONNECT POWER SUPPLY
BEFORE SERVICING



NOTE :
 LEFT SIDE COMPRESSOR WIRE MUST PASS THROUGH CURRENT SENSOR (2)
 TIMES AND RIGHT SIDE COMPRESSOR WIRE MUST PASS THROUGH (1) TIME.



POTENTIOMETER SETTINGS				
AIR COOLED				
SOFTSERVE	SERVE-LEFT	SERVE-RIGHT	NIGHT-LEFT	NIGHT-RIGHT
3000	3000	2500	2300	
WATER COOLED				
SOFTSERVE	SERVE-LEFT	SERVE-RIGHT	NIGHT-LEFT	NIGHT-RIGHT
1400	1400	1900	1700	

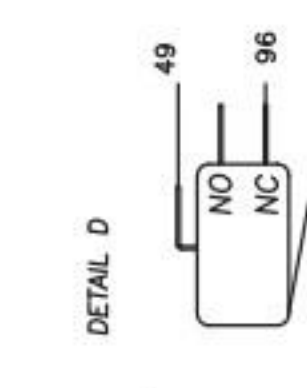
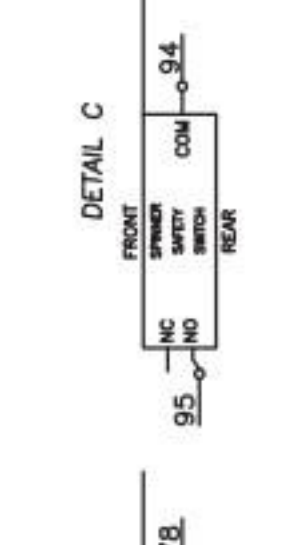
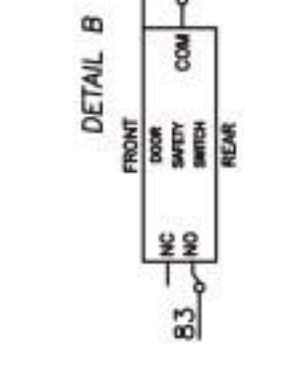
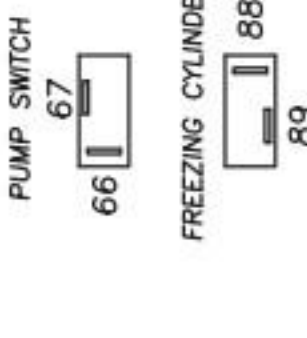
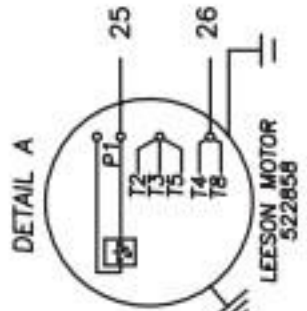
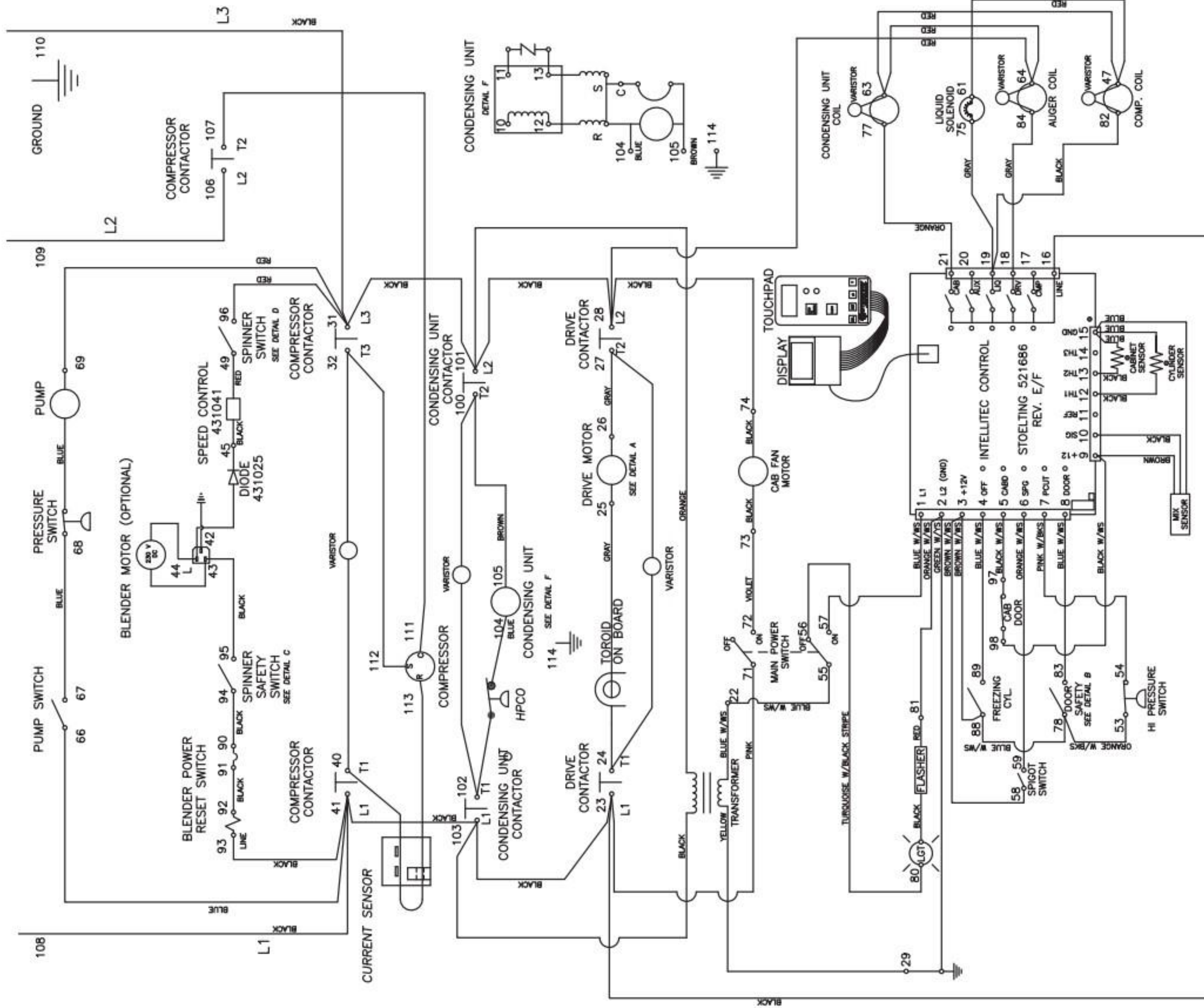


STOLING
KIEL, WISCONSIN U.S.A. 53042
ELECTRICAL WIRING DIAGRAM
MODEL: SU444-309, 109
DIAGRAM NO.: 2202465L-WD
REVISION NUMBER: 1

NOTE (A): LEFT SIDE COMPRESSOR RUN WIRE MUST PASS THROUGH CURRENT SENSOR (2) TIMES AND RIGHT SIDE COMPRESSOR WIRE MUST PASS THROUGH (1) TIME. (AIR COOLED ONLY)
NOTE (B): DRIVE MOTOR OVERLOAD TO BE SET AT 6.6 AMPS & AUTOMATIC RESET

2202465L-WD

CAUTION
DISCONNECT POWER SUPPLY
BEFORE SERVICING



NOTE:
FOR 3 PHASE ROUTE "RUN" WIRE THROUGH CURRENT SENSOR.