

Technical Manual and Replacement Parts List

Freezer with Refrigerated Rail



MODEL SKPF32D

SILVER KING REFRIGERATION INC.

1600 Xenium Lane North, Minneapolis, MN 55441-3787
Phone (763) 923-2441

FORM 34758 REV I

SILVER KING®

Specifications Subject to Change Without Notice.



**TECHNICAL MANUAL
SILVER KING FREEZER
MODEL SKPF32D**

Thank you for purchasing Silver King food service equipment. Our goal is to provide our customers with the most reliable equipment in the industry today. Please read this manual and the accompanying warranty information before operating your new Silver King unit. Be sure to complete and mail the warranty card within 10 days of purchase to validate your warranty.

INSPECT FOR DAMAGE AND UNCRATE

Upon delivery of your new Silver King unit, uncrate at once to examine and test for possible damage following the instructions printed on the exterior of the container. Report any damages to the carrier responsible for transportation and promptly present a claim for any evidence of mishandling. Save all packaging materials if a claim must be filed.

INSTALLATION

The stainless steel exterior of the cabinet has been protected by a plastic covering during manufacturing and shipping. This covering can be readily stripped before installation. After removing this covering, wash the interior and exterior surfaces using a warm, mild soapy water solution and a sponge or soft cloth. Rinse afterward with clean water and wipe dry. Do not use chlorinated cleaners.

Location:

When locating your new Silver King unit, convenience and accessibility are important considerations, but the following installation guidelines must be observed;

- Always avoid locating the unit adjacent to an oven, heating element or hot air source which could adversely affect the performance of the unit.
- The unit must be level.
- For proper ventilation, the bottom front of the unit must not be obstructed and 4 inches of clearance should be maintained behind the unit. Above the counter surface, 2 inches of clearance should be allowed along the left end of the rail for access to the rail power switch.

Legs/Casters:

Models without a base come with Legs or Casters. To install them, tilt the unit and thread the Legs or Casters into the four Rivnuts in the bottom of the cabinet. Make sure that they are installed tightly to prevent future thread wear.

Condenser Filter Screen

On models without a base, the Condenser Filter Screen, Screen Pull and Filter Guides are packaged inside the cabinet. The instructions for installing these parts are included in this technical manual. On models with a base, the Condenser Filter Screen is factory mounted behind the Base Grill. Remove the Base Grill and ensure that the Condenser Filter Screen is in place. Do not operate the unit without the filter screen installed!

Drawers:

To remove the Drawers on the drawer models for cleaning, simply open them fully, push the stop levers out of the way on the Cabinet Drawer Tracks while pulling the Drawer out. To reinstall the Drawer, line up the Drawer Tracks on the cabinet and the Drawer and push the Drawer into the cabinet. The Drawer Pan can be removed by lifting it out with the Drawer extended.

Electrical Connections:

Be sure to check the data plate, located on the liner of the cabinet, for required voltage prior to connecting the unit to a power source. The specifications on the data plate supersede any future discussion.

The standard unit is equipped with an eight (8) foot power cord that requires a 115 Volt, 60 Cycle, 1 Phase **properly grounded** electrical receptacle. The power cord comes with a 3 prong plug for grounding purposes. Any attempt to cut off the grounding spike or to connect to an ungrounded adapter plug will void the warranty, terminate the manufacturers responsibility and could result in serious injury.

The circuit must be protected with a 15 or 20 ampere fuse or breaker. The unit must be isolated on a circuit and not plugged into an extension cord.

OPERATION

Initial Start Up:

After satisfying the installation requirements, the unit is ready to start. The unit will start when the power cord is connected to the required power source. If the compressor does not start when the unit is initially plugged in, check to make sure that the temperature control is not in the 'off' position. Allow the unit to run a minimum of two hours before loading it with product. When loading the unit with product, take care not to block the air flow at the back of the cabinet as this would affect the performance of the cabinet.

Temperature Control:

The Temperature Control is located on the back wall of the cabinet liner and is factory set to maintain an average cabinet temperature of 0 Deg. F. To obtain colder temperatures turn the Temperature Control stem clockwise and visa versa with a flat blade screwdriver. Allow the unit a minimum of one hour to respond to a control setting adjustment.

Defrost:

Your Silver King unit is an automatic defrost unit. No additional plumbing is required. Automatic defrosting is accomplished by a defrost heater and timer. Frost buildup on the evaporator coil is cleared at six hour intervals. Defrost water is collected in a pan located in the compressor compartment where it is evaporated into the room air. It is important that the unit be level so the condensate can drain properly.

MAINTENANCE

Preventative maintenance is minimal although these few steps are very important to continued operation and maximizing the life of the appliance.

Cabinet Surfaces:

The cabinet interior and exterior are stainless steel. These surfaces should be cleaned periodically with a solution of warm water and mild soap. After cleaning the surfaces should be rinsed with clean water and wiped dry with a soft cloth. Stainless steel cleaners can also be used. Should a surface become stained, do not attempt to clean with an abrasive cleaner or scouring pad. Use a soft cleanser and rub with the grain of the metal to avoid scratching the surface. Always rinse well and dry after cleaning. Do not use chlorinated cleaners.

Condenser

Periodically the Condenser Filter Screen must be cleaned. On cabinets without a base, the Condenser Filter Screen is located on the bottom of the cabinet. To remove it, simply pull it out the front of the unit using the Filter Screen Pull. On cabinets with a base, the Condenser Filter Screen is located behind the Base Grill. Simply remove the Base Grill to gain access to it. Clean the Condenser Filter Screen by rinsing it in a stream of water. Dry the screen by tapping it on a counter or floor. On the models without a base, replace the Condenser Filter Screen by placing it into the Filter Guides on the bottom of the unit and sliding it all the way to the rear of the cabinet. On the models with a base, replace the Condenser Filter Screen by placing it onto the angled support and reattaching the Base Grill. Do not operate the unit without the filter sreen installed!

Door Gasket

The Door Gasket will collect dirt and should be wiped clean with a warm, mild soapy water solution to extend its life and assure maximum cabinet performance and life.

MODEL _____ SERIAL NO. _____ DATE INSTALLED _____

FILTER GUIDES AND SCREEN INSTALLATION INSTRUCTIONS

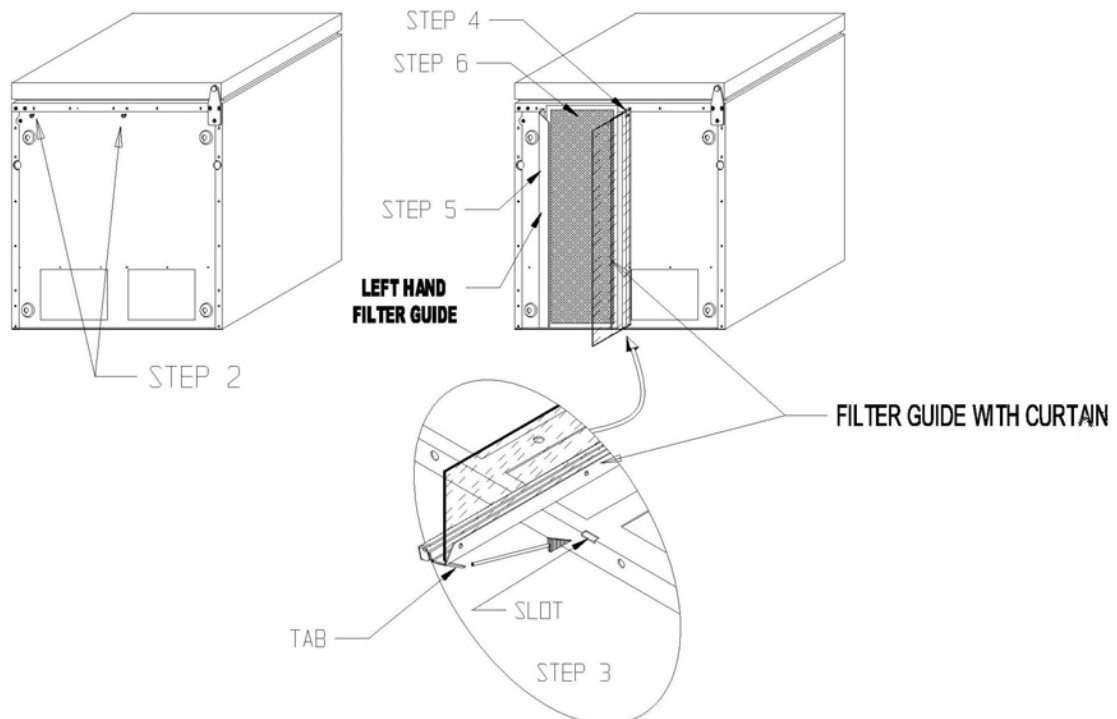
MODELS: SKR27, SKP278, SKP2712, SKR27BKD, SKPZ27, SKR24, SKF24, SKF32D, SKPF32D

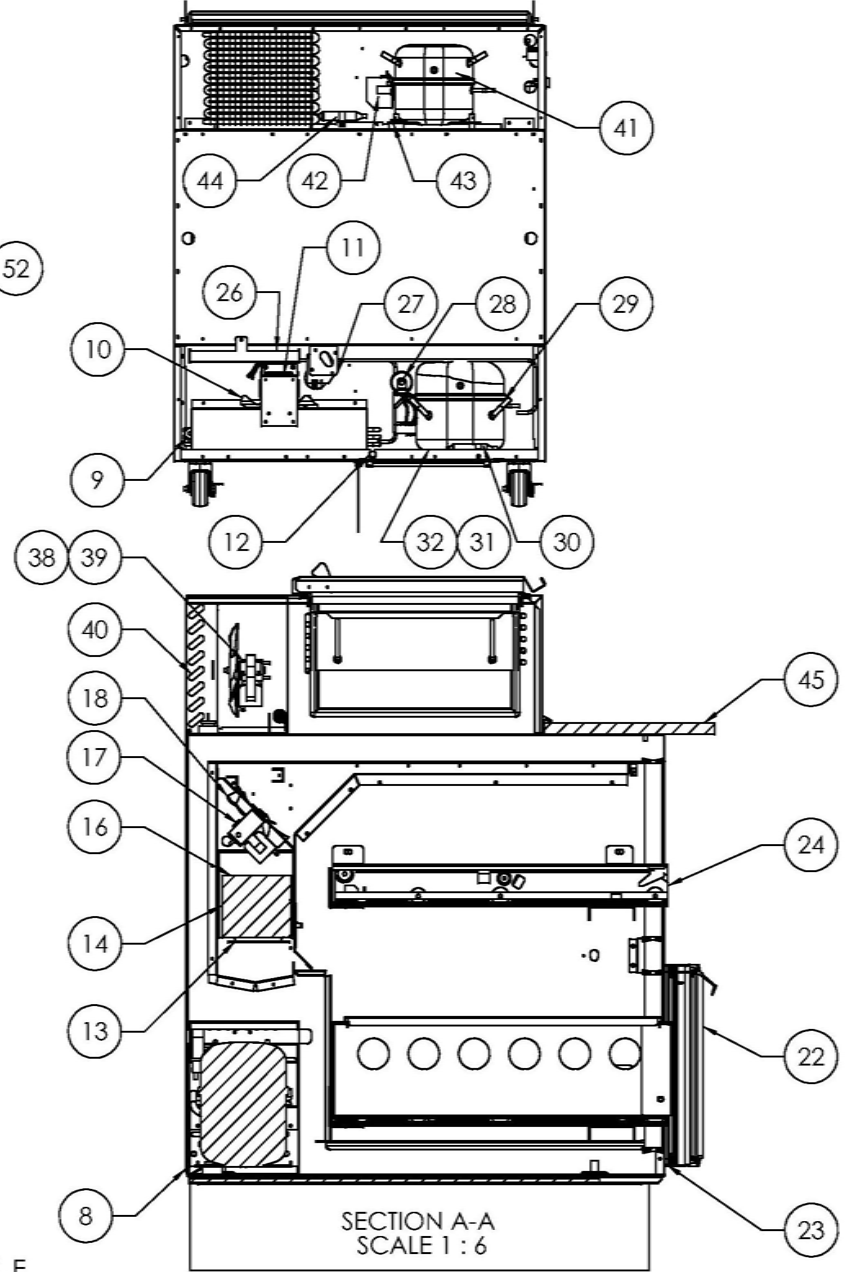
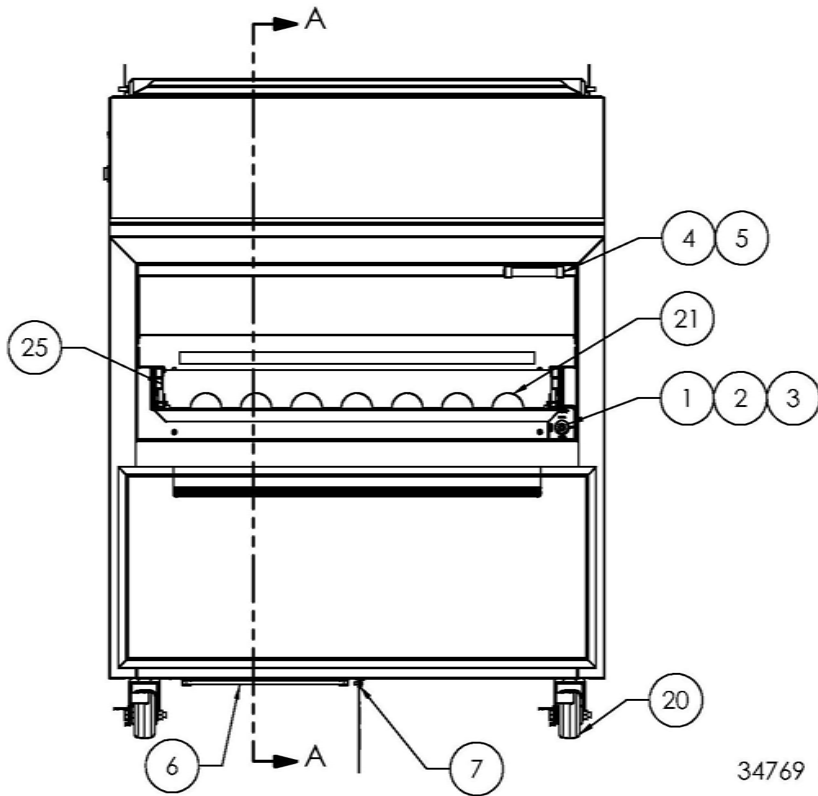
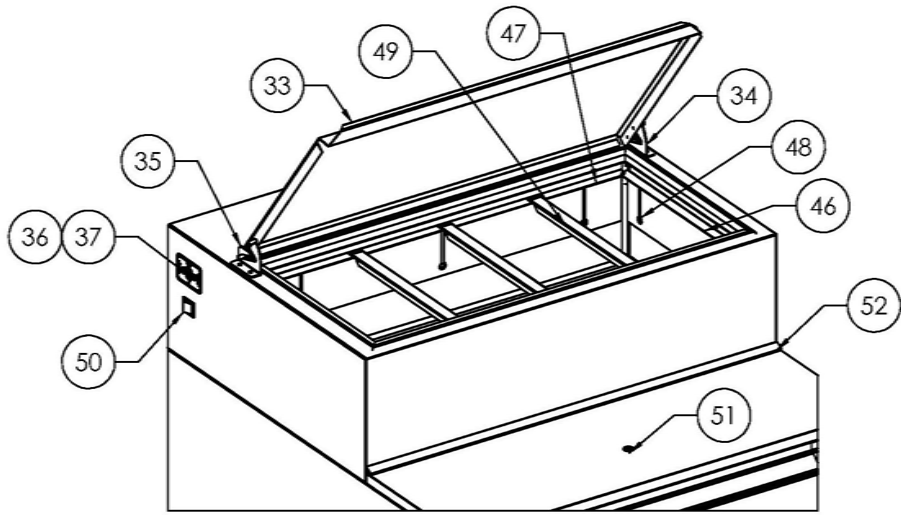
DO NOT OPERATE UNIT WITHOUT FILTER SCREEN AND AIR CURTAIN INSTALLED

1. Disconnect unit from power source.
2. Tip the unit on its back and loosen the 2 screws along the top edge of the base.
3. Insert tab on the end of the filter guide with curtain into the slot located along the lower edge of the base unit.
4. Slip the opposite end of the filter guide with curtain under the screw head loosened in step 2, pull forward, and tighten screw to secure the filter guide to base.
5. Repeat step 4 with left filter guide.
6. Insert filter screen into tracks formed by the guides and slide back until the screen stops.
7. Install legs or casters.
8. Return unit to original upright position.

This kit includes:

- Filter guide with curtain
- Left filter guide
- Filter screen



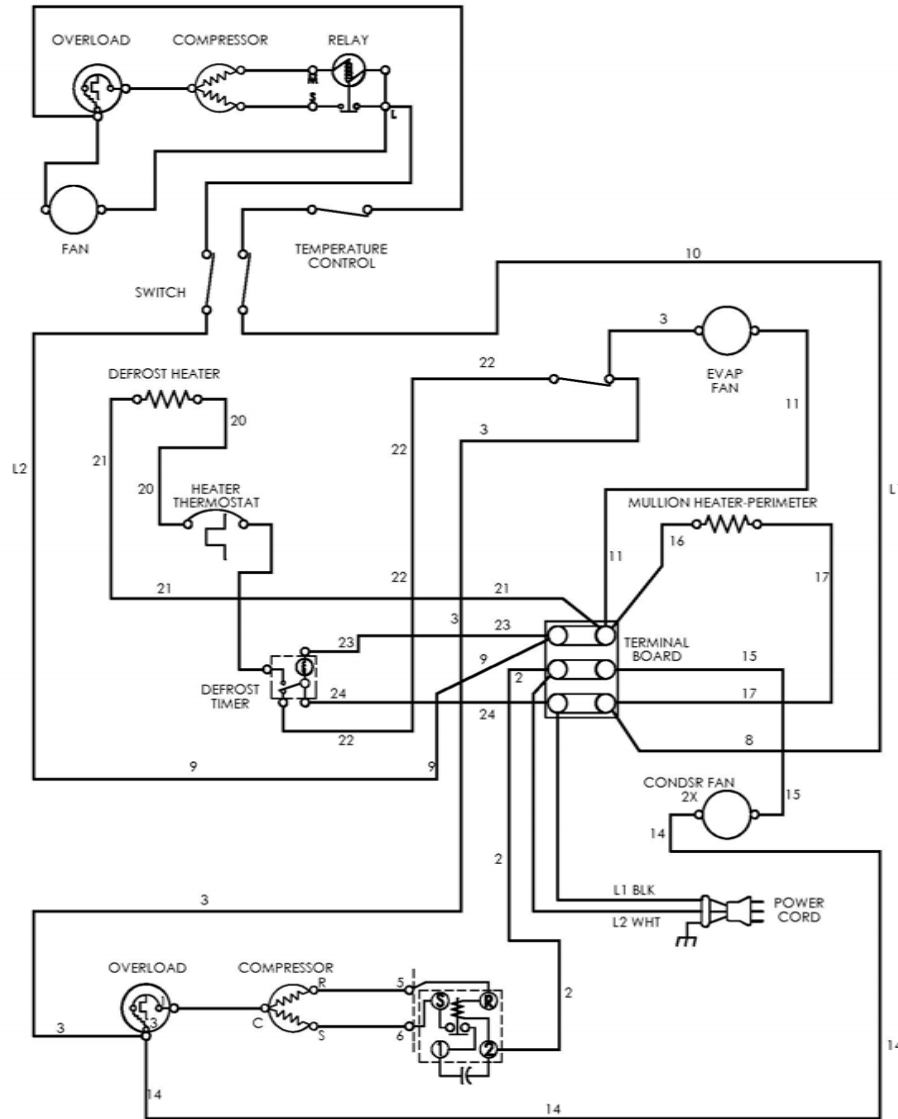


REPLACEMENT PARTS LIST - SKPF32D

ITEM NO.	PART DESCRIPTION	PART NO.
1	TEMPERATURE CONTROL	42870
2	PLATE, TEMPERATURE CONTROL	20653
3	KNOB, TEMPERATURE CONTROL	21487
4	TEMPERATURE INDICATOR	22409
5	SCREW	97007
6	FILTER SCREEN	31221
7	ASSY FILTER GUIDE	26024
8	REAR PANEL	34198
9	CONDENSER COIL	34012
10	CONDENSER FAN BLADE, 6.75"	43500
11	CONDENSER FAN MOTOR, 115V	22048
12	POWER CORD, 115V	43263
13	DEFROST HEATER, 115V	34205
14	HEAT EXCHANGER 115V	35313
15	EVAPORATOR COIL	35284
16	DEFROST THERMOSTAT	33338
17	EVAPORATOR FAN MOTOR, 115V/60HZ	21256
18	EVAPORATOR FAN BLADE, 5"	99196
20	CASTER KIT, 3"	10314-63
21	WMENT PLATE SLIDE	34728
22	DRAWER ASSEMBLY	37330
23	DRAWER GASKET	34014
24	SLIDE 22 IN CENTER MEMBER RH	34647
25	SLIDE 22 IN CENTER MEMBER LH	34648
26	CONDENSATE PAN	34080
27	DEFROST TIMER, 115V	99291
28	ELECTRICAL KIT, 115V (RELAY, OVERLOAD, CAPACITOR)	10344-76
29	COMPRESSOR, 115V/60HZ	10343-76
30	DRIER	23793
31	GROMMET, COMPRESSOR MOUNT	20481
32	HAIRPIN CLIP	98106
33	COVER	23756
34	HINGE, RIGHT	23071
35	HINGE, LEFT	23072
36	TEMPERATURE CONTROL (RAIL)	43064
37	TEMP CONTROL PLATE (RAIL)	20653
38	FAN MOTOR - 115V (RAIL)	21251-2
39	FAN BLADE (RAIL)	22321
40	CONDENSER COIL (RAIL)	43393
41	COMPRESSOR - 115V/60 HZ (W/ELECTRICALS AND DRIER) (RAIL)	10343-03
42	COMPRESSOR ELECTRICAL KIT (RELAY/OVERLOAD) 115V (RAIL)	10344-03
43	GROMMET	20481
44	DRIER (RAIL)	22677
45	CUTTING BOARD	34203
46	PAN SUPPORT, SHORT	23712
47	PAN SUPPORT, LONG	23713
48	THUMB SCREW	98094
49	ADAPTER BAR	25567
50	SWITCH 115V	26378
51	KNOB THREADED	24305
52	BRACKET CUTTING BOARD	34204

FORM 34769

WHEN ORDERING REPLACEMENT PARTS, PLEASE PROVIDE MODEL AND SERIAL NUMBERS.



MODEL: SKPF32D
34759 REV. A