

INSTRUCTION SHEET

How to Modify NGC Tornado 1 & 2 for Larger High-Voltage Transformers

Step 1:

Mark a ¼" section on the inside edge of the transformer opening.

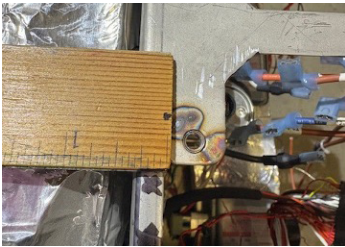


Figure 1

Step 2:

Mark a 1/8" section on the outside edge of the transformer opening.

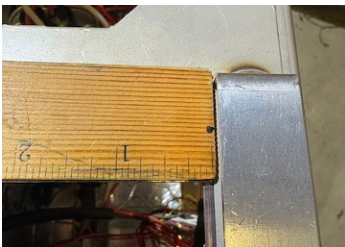


Figure 2

Step 3:

Using a Dremel or a similar cutting tool, make two cuts along the edge of the inside opening.



Figure 3

INSTRUCTION SHEET

How to Modify NGC Tornado 1 & 2 for Larger High-Voltage Transformers

Step 4:

Make an additional cut along the length of the inside opening and remove the excess material.



Figure 4

Step 5:

Repeat the cutting and material removal process for the outside opening.

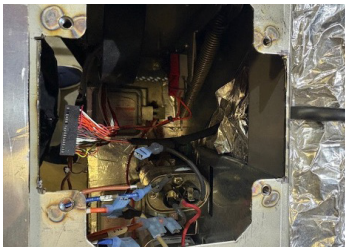


Figure 5

Step 6:

With the extra space created, mount the transformer in the opening.

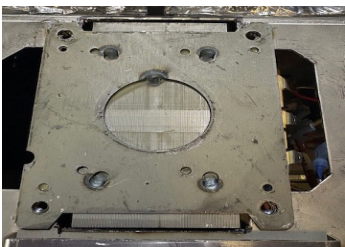


Figure 6