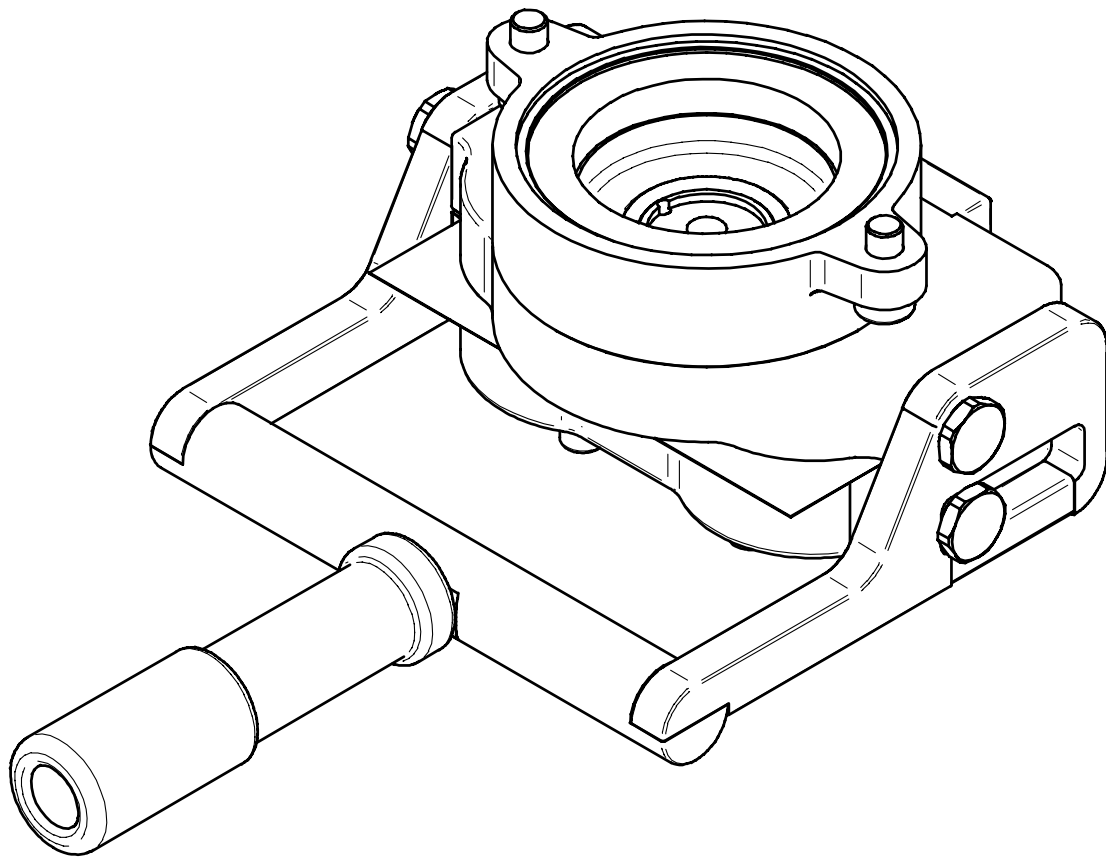


DUAL CHAMBER [POD] ADAPTOR

Service and Operations Guide



DUAL CHAMBER ADAPTOR INSTALLATION ON MACHINES EQUIPPED WITH ROTATIVE PUMP

ASSEMBLING OF THE DUAL CHAMBER ADAPTOR

Step 1 :

- Turn the rotary power knob to position "1" to stop heating.
- Cool the machine by opening the outlets of hot water and steam until no pressure remains and continually cycle water through each group outlet (without portafilter installed) until dispensing temperature is luke-warm - appx. 3 minutes of continuous flow.
- Turn the rotary power knob to position "0" to switch the machine off and shut off water supply to machine.
- Remove the plastic cover (Plate 241 / ref. [DV-163](#))
- Remove the gicluer holder from the right side of each group (DCA / ref. [23100](#)) and rebuild using highlighted items within gicluer kit (DCA / ref. [23127](#)).
- Disconnect coil and remove the 3-way valve (Plate 260 / ref. [PI-45](#)) and replace gaskets (Plate 260 / ref. [27737](#)).
- Remove lower Crema group components (Plate 241 / [DO-196](#), [PE-6](#), [CN-51](#), [31910](#), [27800](#), [PC-17](#), [ID-103](#), [51600](#), [50204](#)).
- Remove group[s] from boiler by loosening M10 nuts and washers (Plate 241 / ref. [CH-64](#), [CH-62](#))
- Remove gasket, screw, and insulator (Plate 241 / ref. [CN-124](#), [31950](#), [PE-28](#)) from back of group and replace with DCA format components (DCA / ref. [CN-189](#), [31938](#), [PE-28](#)).
- If group format matches Plate 241 exactly (Crema format), proceed to Step 2. If format is otherwise, remove the cup warmer to access and remove the heat-exchange inlet pipe and replace Teflon unit feeding tube with 72mm version (DCA / [DV4000](#))
- Install heat-exchange inlet pipe using new copper washer (DCA / ref. [CH-17](#)) and re-assemble the cup warmer.

Step 2 :

- Install gaskets PE25 and [083501](#) into the DCA group interface (DCA / ref. [31925](#)) CAUTION: with Crema groups, a tap (DCA / ref. [31915](#)) and an additional [083501](#) MUST be installed to crema cavity prior to installing the DCA to group)
- Install DCA to group with the 2 screws M8x16 (DCA / ref. [CV-3](#)).
- Install the DCA/group assembly back to the machine using original M10 nuts and washers (Plate 241 / ref. [CH-64](#), [CH-62](#)) and reconnect coil.

Step 3:

- Check that the closing of the DCA is not too slack, nor too hard. You can adjust the filter supports (DCA / ref. [31928](#)) by removing the filters (DCA / ref. [33402](#)) and screwing/unscrewing in order to adjust the filter height, ensuring a proper seal.
- Return water supply to the machine and turn rotary power knob to position "1" to allow refilling of the heat-exchange. Prior to resuming heat the machine, check that there are no leaks and perform a group flow test by installing the cleaning plug (DCA / ref. [DV0105](#)) and cycling each group.
- Turn rotary power knob to position "2" to resume heating - we advise you to adjust the pressurestat between 1,1 and 1,3 bar. You must also adjust the pump to 9 bar while group is cycling.

Step 4 :

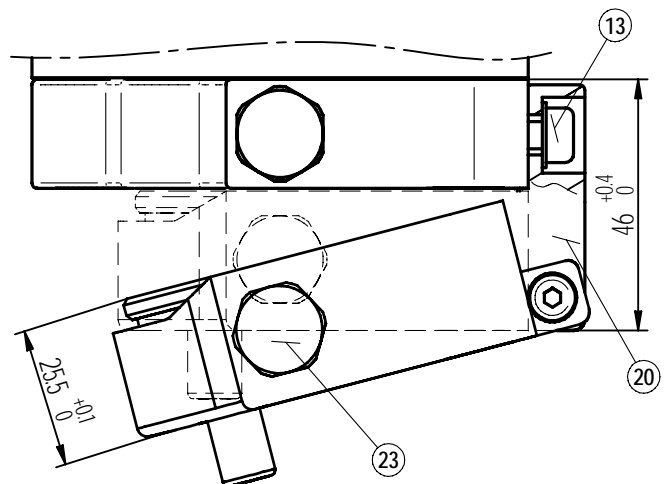
- Cut section of group cover behind original Crema group hole to resemble DCA group cover (DCA / ref. [DV7016](#)) and install to machine.

ADJUSTEMENT METHOD

- Loosen the 2 screws (23) of the low exchanger.
- Close the DCA without filters installed.
- Unscrew the filter support to the point of contact contact with the head gasket.
- Replace the filters and tighten 2 screws (23)

Check the parallelism of the low exchanger with the top exchanger:

- Close the DCA.
- Loosen the screw (13) to release the back swivel (20) to allow self-centering.
- Re-set the screw.



NETTOYAGE QUOTIDIEN DU GROUPE D.C.A. DAILY CLEANING OF THE D.C.A. UNIT

Durée : 2 minutes Quand : **Après le service**
Duration: 2 minutes When: **After serving**

Mettre en place le « kit bouchon » de nettoyage (bouchons bombés vers le bas).

Fermer le D.C.A.



Fit the "plug kit" used for cleaning in place (domed plugs lowermost).

Close the D.C.A.

Appuyer sur la touche infusion : 2 grands tasses. De l'eau s'écoule des becs

Recommencer l'étape précédente 3 ou 4 fois .

Enlever et ranger le « Kit bouchon ».

Refermer le système D.C.A sans l'enclencher à fond pour le maintenir à la bonne température.



Press the infusion button: 2 large cups. Water flows from the spouts

Repeat the previous step 3 times.

Remove the "plug kit" and put it away.

Close the DCA system without fully engaging it, to keep it at the right temperature

NETTOYAGE HEBDOMADAIRE DU GROUPE D.C.A. WEEKLY CLEANING OF THE D.C.A. UNIT

Durée : 5 minutes Quand : **Avant la fermeture**
Duration: 5 minutes When: **Before closing**

Mettre en place une pastille dans chaque logement du « kit bouchon »



Put a tablet in place in each housing of the "plug kit"

Mettre en place le « kit bouchon » de nettoyage

Fermer le D.C.A.



Fit the "plug kit" for cleaning into place

Close the D.C.A.

Appuyer sur la touche ▼ , attendre 2 secondes pour que le détergent s'écoule par les becs et ré-appuyer sur ▼ .

Répéter l'opération précédente jusqu'à dissolution complète des pastilles (5-6 fois).

Rincer abondamment en procédant comme pour le **nettoyage quotidien**



Press the ▼ button, wait for 2 seconds until the detergent solution flows from the spouts and press ▼ once again.

Repeat the previous operation until the tablets are completely dissolved (5-6 times).

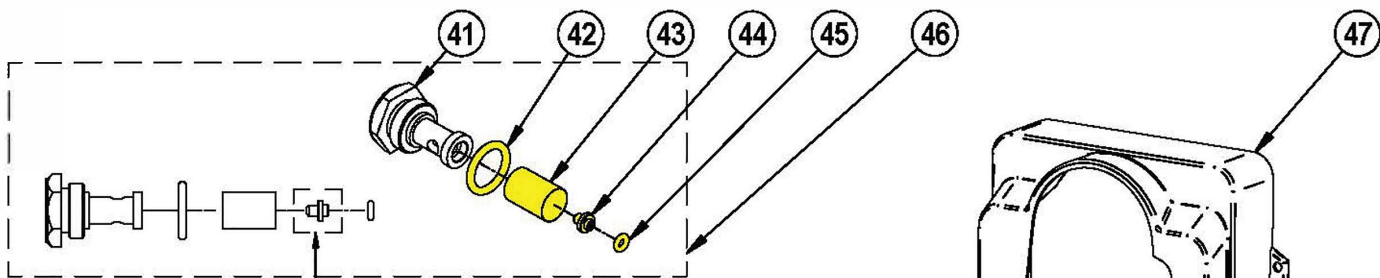
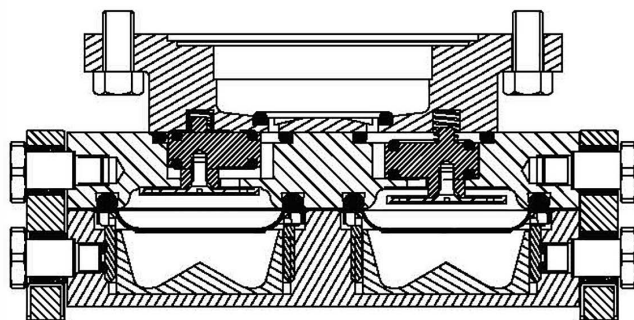
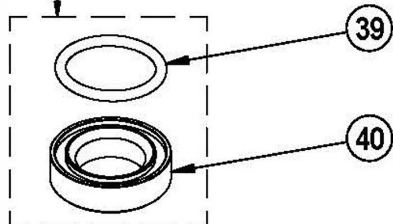
Rinse a lot following the **daily cleaning** operations.

Dual Chabmer [Pod] Adaptor (DCA)

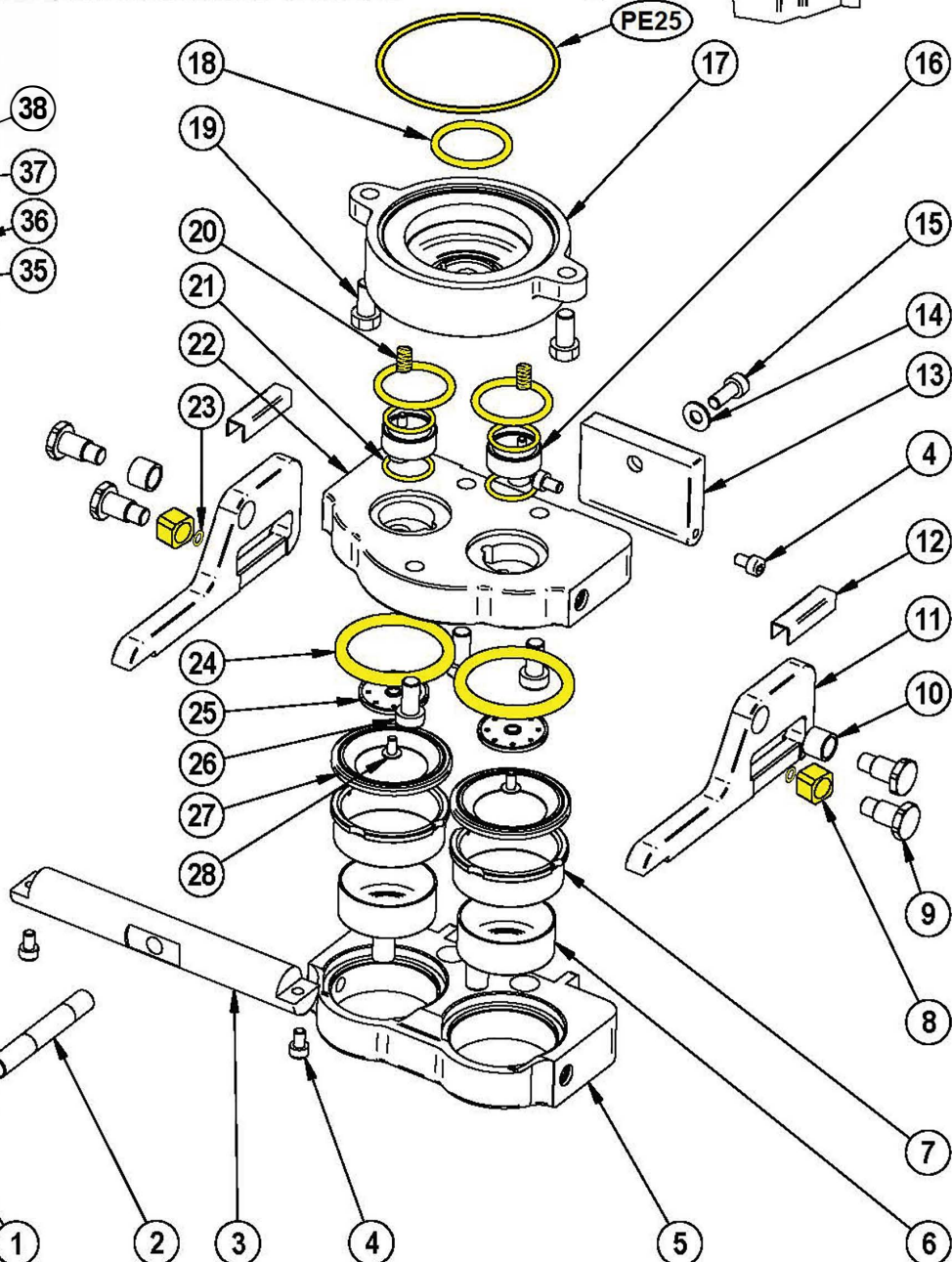
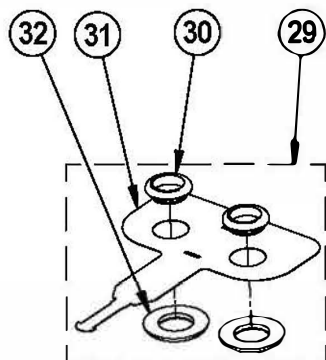
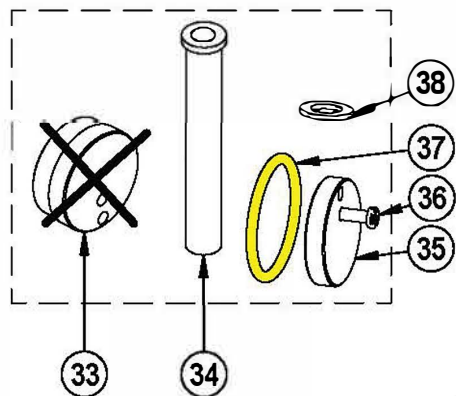
Highlighted parts represent DCA Rebuild Kit components (ref. [DV-1870](#))

REP	REF	DESIGNATIONS	DESIGNATIONS
1	33005	POIGNEE DE COUPE	HANDLE OF FILTER HOLDER
2	31923	ARBRE POIGNEE	HANDLE SHAFT
3	31929	TRAVERSE	CROSS PIECE
4	50202	VIS TCHc M5x8 INOX	SCREW M5 X 8
5	31932	ECHANGEUR BAS	LOW EXCHANGER
6	31921	ENTONNOIR	FUNNEL
7	31928	SUPPORT FILTRE MOBILE	MOVABLE FILTRE SUPPORT
8	31934	PALIER CARRE	SQUARE SOFT BEARING
9	31930	VIS EPAULEE	SHOULDERED SCREW
10	31931	PALIER	BEARING
11	31922	CAME	CAM
12	31926	GLISSIERE	SLIDE
13	31927	PIVOT ARRIERE	BACK SWIVEL
14	PH-32	RONDELLE ACIER Zn 6,25x14x1,2	WASHER
15	GR-4	VIS CHC M6 X 16	SCREW M6 X 16
16	31924	AXE CLAPET	VALVE AXLE
17	31925	ENTRETOISE	GROUP INTERFACE
18	83501	JOINT TORIQUE 3,53 X 29,75 FKM	GASKET 3,53 X 29,75 FKMV
19	CV-3	VIS TH M8 x 20 INOX	S.STEEL SCREW M8 x 20
20	28825	RESSORT D6	SRING D6
21	CN-45	JOINT TORIQUE 2,62X17,13	GASKET - 17,13 X 2,62
22	31943	ECHANGEUR HAUT	HIGH EXCHANGER
23	TC-80	JOINT TORIQUE 1,78X2,90 FKM	GASKET 1.78X2.90 FKM
24	83504	JOINT TORIQUE 5,34 X 43,82 FKM	GASKET 5,34 X 43,82 FKMV
25	31936	DOUCHETTE	SPRAY
26	CN-51	VIS INOX TCHC 8 x 20	SCREW M8 X 20
27	33402	FILTRE N°2	NOTCH FILTER 33mm
28	CN-128	VIS INOX TF M4 X 8	SCREW M4 X 8
29	DV0105	KIT BOUCHON DE NETTOYAGE	CLEANING PLUG KIT
30	DV0107	BOUCHON SUPERIEUR	HIGH PLUG
31	DV0102	SUPPORT BOUCHON NETTOYAGE	CLEANING PLUG HOLDER
32	DV0108	BOUCHON INFERIEUR	LOW PLUG
33	ID-3	ISOLANT TEFLON BLANC ep:21mm	INSULATOR
33	31950	ISOLANT TEFLON BLANC ep:10mm	INSULATOR
34	DV4000	TUBE TEFLON ALIM. GROUPE L:72	UNIT FEEDING TUBE
35	31938	RONDELLE LAITON	BRASS WASHER
36	CN-189	VIS TC M4 X 16 INOX	SCREW M4 X 16
37	PE-28	JOINT TORIQUE 3,53X36,09 FKM	GASKET - 36.09 x 3.53
38	CH-17	JOINT CUIVRE RECUIT 1/2	WASHER - COPPER - 1/2
39	83501	JOINT TORIQUE 3,53 X 29,75 FKM	GASKET 3,53 X 29,75 FKMV
40	31915	BOUCHON POUMON CREMA	CREMA TAP
41	23100	PORTE GICLEUR	GICLUER HOLDER
42	PH-54	JOINT TORIQUE 2,62X13,95 EPDM	O RING - 13.95 x 2.62
43	CF-326	FILTRE INOX D.int=12 H=17,5	FILTER D:12 H:17,5
44	23117	GICLEUR DIAM:0,7	JET DIAM. 0.7
45	TC-80	JOINT TORIQUE 1,78X2,90 FKM	GASKET 1.78X2.90 FKM
46	23127	KIT PORTE GICLEUR Ø0.7	GICLUER Ø 0.7 KIT
47	DV7016	JUPETTE	COVER

(OPTION: POUR GROUPE CREMA / FOR CREMA UNIT)



BE CAREFULL WITH THE DIRECTION OF THE GICLIER



06/14

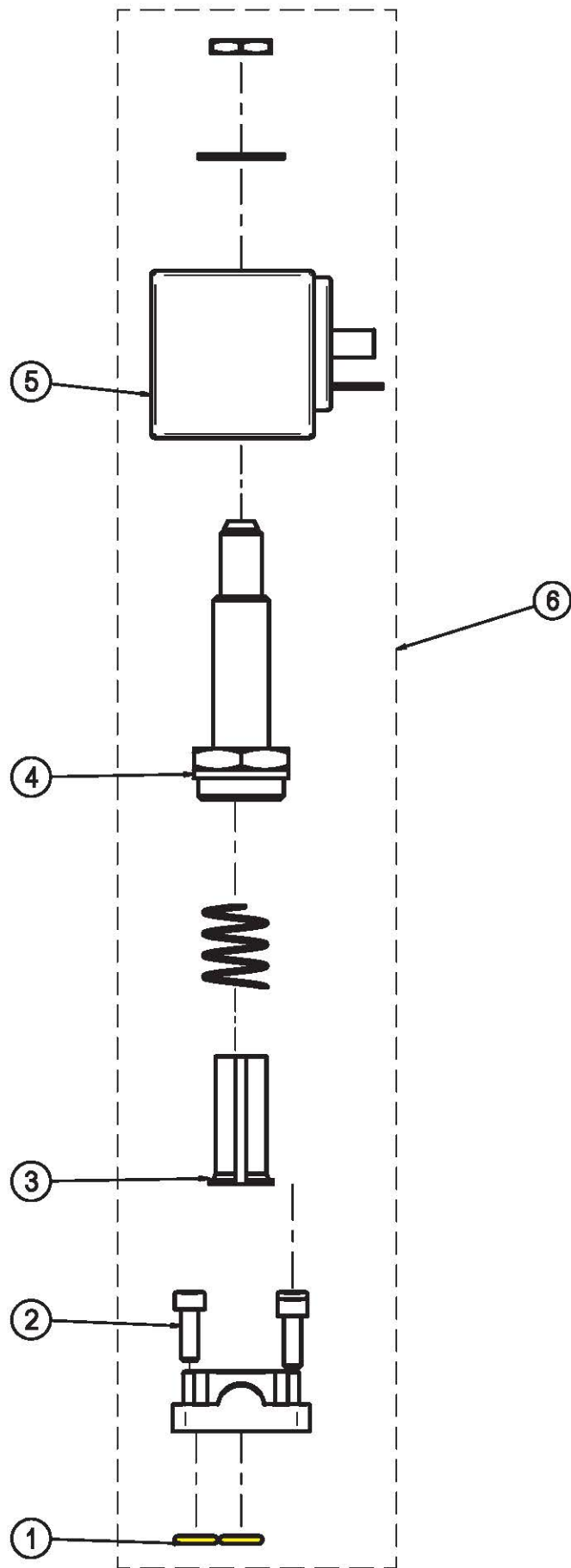
ADAPTATEUR DCA
DCA ADAPTOR

31918

UNIC

PLANCHE/PLATE : 260

REP	REF		DESIGNATION
1	27717	JOINT TORIQUE 1,78 X 6,07	GASKET 1.78 X 6.07
2	MI-80	VIS TCHC M4x12 INOX	SCREW M4 X 12
3	ID-60	NOYAU ELECTROVANNE O.D.E. NM	SOLENOID PISTON - GROUP
4	ID-58	CORPS DEPHASEUR EV ODE	PHASE SHIFTER EV ODE
5	MI-54	BOBINE ELECTROV.8W ODE 220/50	ELECTROVALVE COIL 220V-50HZ
5	MI-83	BOBINE EV O.D.E 220V 60HZ UL	ELECTROVALVE COIL 220V-60HZ
5	MI-90	BOBINE EV O.D.E 110V60 UL	ELECTROVALVE COIL 110V60Hz
5	35015	BOBINE EV CAFE 240V 50HZ 8W	COIL 240V 50HZ 8W
6	PI-45	ELECTROVANNE 3V 220V50HZ	WHOLE ELECTROVALVE 220V 50HZ
6	PI-45A	ELECTROV.3V 110V60Hz UL	WHOLE ELECTROVALVE 110V 60HZ
6	PI-45B	ELECTROVANNE 3V. 220V60HZ UL	WHOLE ELECTROVALVE 220V-60HZ
6	PI-45X	ELECTROV. 3V SANS BOBINE	ELECTOVALVE 3W WITHOUT COIL



PLANCHE/PLATE : 241

REP	REF		DESIGNATION
1	DV1049	EMBOUT DE DECOMPRESSION	DECOMPRESSION TIP
2	DV6039	TUBE DE DECOMPRESSION	PIPE GROUP DISCHARGE
2	DV6059	TUBE DE DECOMPRESSION H150	PIPE GROUP DISCHARGE H150
3	24455	ECROU 1/8	NUT 1/8
4	PI-45X	ELECTROV. 3V SANS BOBINE	ELECTOVALVE 3W WITHOUT COIL
5	MI-80	VIS TCHC M4x12 INOX	SCREW M4 X 12
6	TC-80	GOULOTTE AVANT	FRONT CHUTE
7	23117	GICLEUR DIAM:0,7	JET DIAM. 0.7
8	PH-54	JOINT TORIQUE 2,62X13,95 EPDM	O RING - 13.95 x 2.62
9	CF-326	FILTRE INOX D.int=12 H=17,5	FILTER D:12 H:17,5
10	23100	PORTE GICLEUR	GICLUER HOLDER
11	CH-62	RONDELLE ACIER ZINGUEE DE 10	WASHER
12	CH-64	ECROU ACIER ZN Hu 10	NUT M10
13	CH-63	GOUJON ACIER NICKELE M10	SCREW M10 -STUD
14	ID-18C	CORPS DE GROUPE INJECTION CREMA	CREMA GROUP BODY - INJECTION
15	DO-196	RONDELLE ENTRETOISE 2MM	WASHER SPACER 2 MM
16	PE-6	PORTE COUPE LAITON CHROME	BOWL-HOLDER
17	CN-51	VIS INOX TCHC 8 x 20	SCREW M8 X 20
18	31910	RONDELLE DIFFUSEUR GROUPE	WASHER DIFFUSER
19	27800	JOINT TORIQUE 2.62 X 52.07 NBR	GASKET 2.62 X 52.07
20	PC-17	JOINT DE COUPE 57 x 75 x 9	HEAD GASKET 9mm
21	ID-103	FILTRE TASSOIR	PACKER FILTER
22	51600	RONDELLE INOX MOYENNE DE 5	WASHER
23	50204	VIS TH M5 x 10 INOX	SCREW M5 X 10
24	CH-17	JOINT CUIVRE RECUIT 1/2	WASHER - COPPER - 1/2
25	DV4000	TUBE TEFLON ALIM. GROUPE L:72	UNIT FEEDING TUBE
25	DV4001	TUBE TEFLON ALIM. GROUPE L:60	UNIT FEEDING TUBE
26	ID-23	RACCORD ALIM.1/2M-M	FITTING 1/2-1/2
27	CN-124	VIS INOX TF 4 x 20	SCREW M4 X 20
28	31950	ISOLANT TEFLON BLANC ep:10mm	INSULATOR
29	PE-28	JOINT TORIQUE 3,53X36,09 FKM	GASKET - 36.09 x 3.53
30	PC-60	RONDELLE EPDM 1mm	EPDM WASHER 1mm
31	PE-25	JOINT TORIQUE 2,62X74,27 FKM	GASKET - 74.27 x 2.62
32	PC-17E	JOINT DE COUPE 57 x 75 x 10	HEAD GASKET 10mm
33	23127	KIT PORTE GICLEUR Ø0.7	GICLUER Ø 0.7 KIT

