



PREP EQUIPMENT PM91, MG8912, VS2000 MAINTENANCE & PARTS MANUAL



Persons under age 18 are not permitted to operate or have accessibility to operate this equipment per U.S. Dept. Of Labor Employment Standards Administration Fact Sheet No. ESA913.

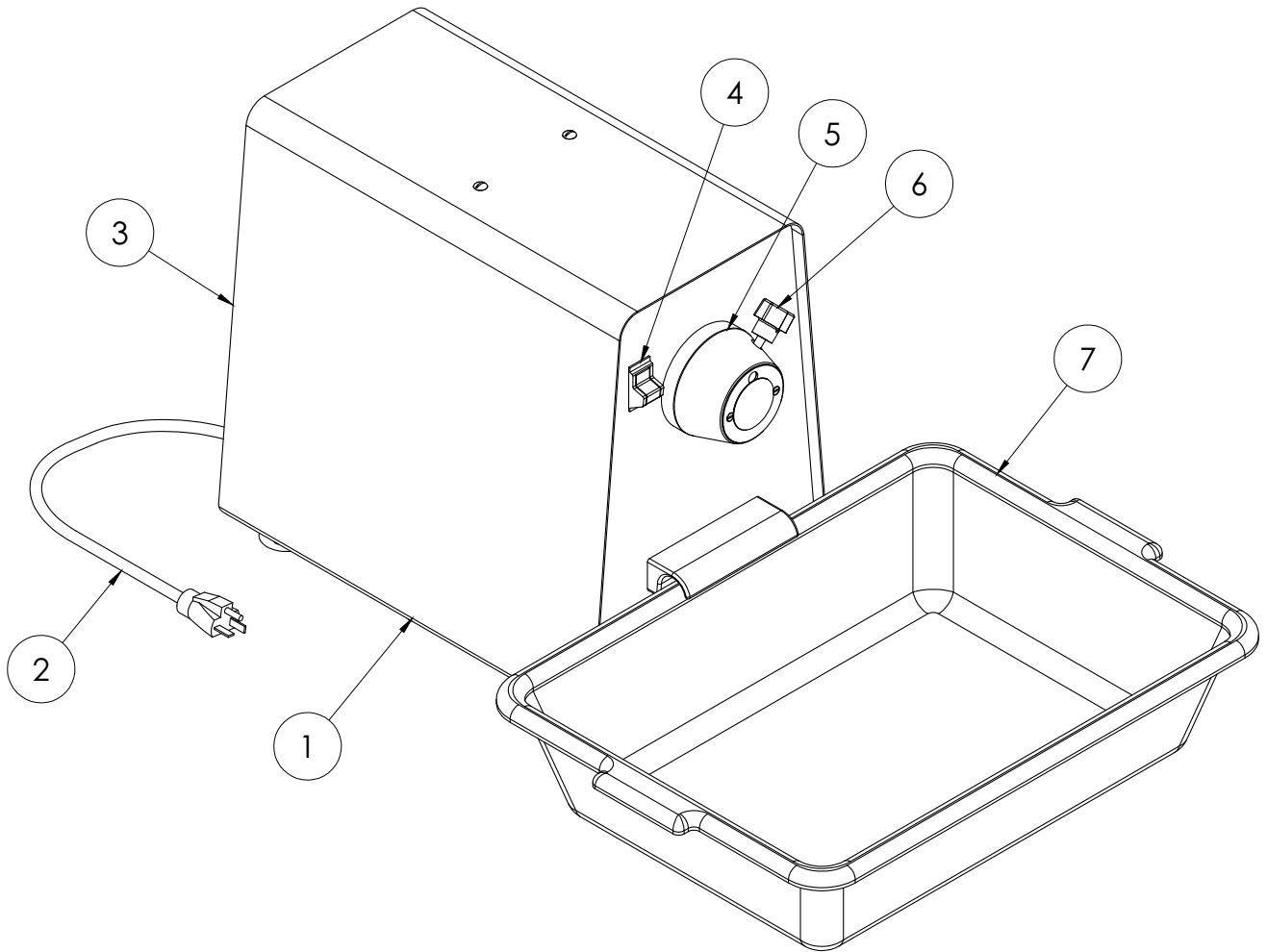
TABLE OF CONTENTS

<u>DESCRIPTION</u>	<u>PAGE</u>
TABLE OF CONTENTS.....	I
LIST OF ILLUSTRATIONS	I
MECHANICS MAINTENANCE	
TROUBLE SHOOTING GUIDE	1.1
REMOVAL OF COVER.....	1.2
REPLACING THE DRIVE BELT.....	2.1
PULLEY AND PTO REMOVAL	3.1
MOTOR	
REMOVAL	4.1
INSTALLATION	4.2
FEET AND LEG REMOVAL.....	5.1
TUB CLIP REMOVAL.....	5.1
PARTS LISTS	
PM91.....	6.1
PM91G.....	6.3
MG8912	6.5
VS2000	6.7

LIST OF ILLUSTRATIONS

<u>ILLUSTRATION</u>	<u>PAGE</u>
FIGURE 1 OVERALL VIEW	II
FIGURE 2 PM91 EXPLODED VIEW	6.2
FIGURE 3 PM91G EXPLODED VIEW	6.4
FIGURE 4 MG8912 EXPLODED VIEW	6.6
FIGURE 5 VS2000 EXPLODED VIEW	6.8

OVERALL VIEW
FIGURE 1



- | | |
|------------------------------|--------------------------|
| 1. POWER UNIT | 5. POWER TAKE-OFF (PTO) |
| 2. POWER CORD | 6. THUMB SCREW |
| 3. CIRCUIT BREAKER (ON BACK) | 7. PLASTIC TUB |
| 4. POWER SWITCH | 8. TUB COVER (NOT SHOWN) |

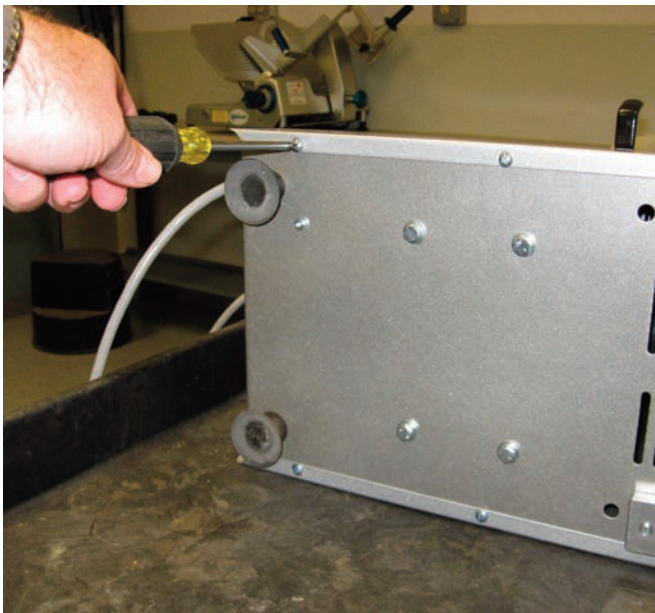
TROUBLESHOOTING GUIDE

TROUBLE	POSSIBLE CAUSE	REMEDY
1. Power unit will not operate.	1.1 Burned switch contacts. 1.2 Electrical service down. 1.3 Burned out motor.	1.1 Replace switch. 1.2 Check electrical service. Replace fuse or reset circuit breaker if necessary. 1.3 Remove and replace motor.
2. Power unit is running but attachment will not turn.	2.1 Broken or slipping belt. 2.2 PTO adapter missing.	2.1 Replace belt. 2.2 Install PTO adapter.
3. Attachments rattle when under power.	3.1 Thumb screw on PTO loose or missing.	3.1 Replace and tighten the thumb screw.

REMOVAL OF COVER

The cover (Figure 2 [1]) must be removed to perform maintenance operations on the power unit. It is secured by two screws on the top and six Phillips pan head screws on the under side.

1. DISCONNECT THE ELECTRICAL POWER CORD.
2. Lay the unit on it's side and remove the six screws in the bottom of the cover.
3. Stand the unit back up and remove the two screws in the top.
NOTE: Depending on the model there may be a tray support attached with these two screws.
4. Spread the sides slightly and slide the cover off the unit. Use care to avoid pulling the foam strips off the power unit housing.
5. Reinstall the top cover in the reverse of the above procedures using care to insure that the foam strips are not disturbed.

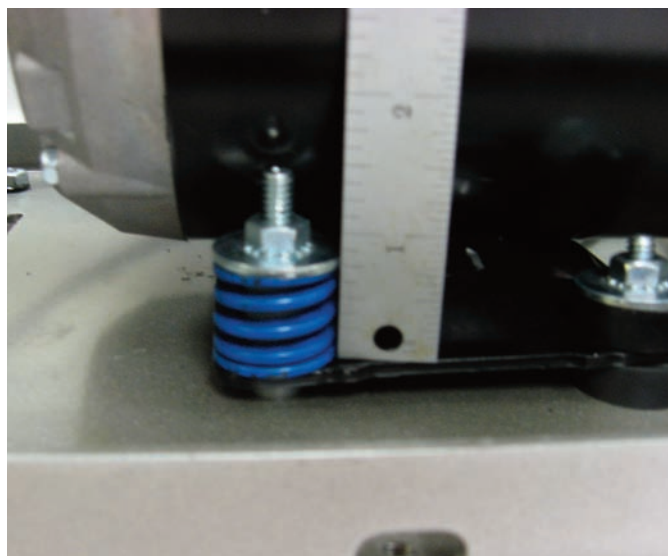
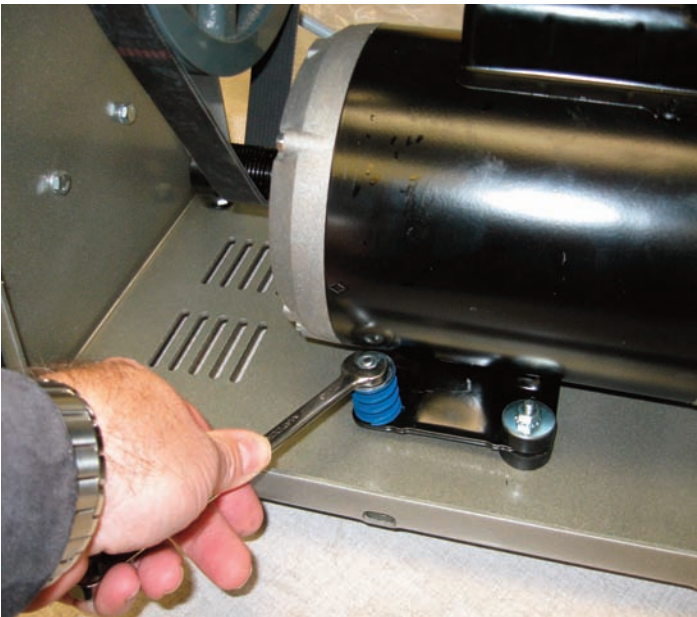


Pan support bracket
MG8912 only



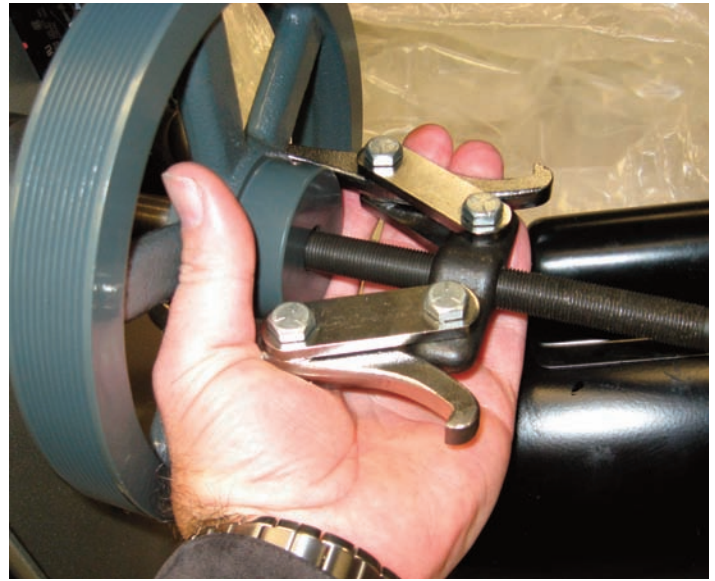
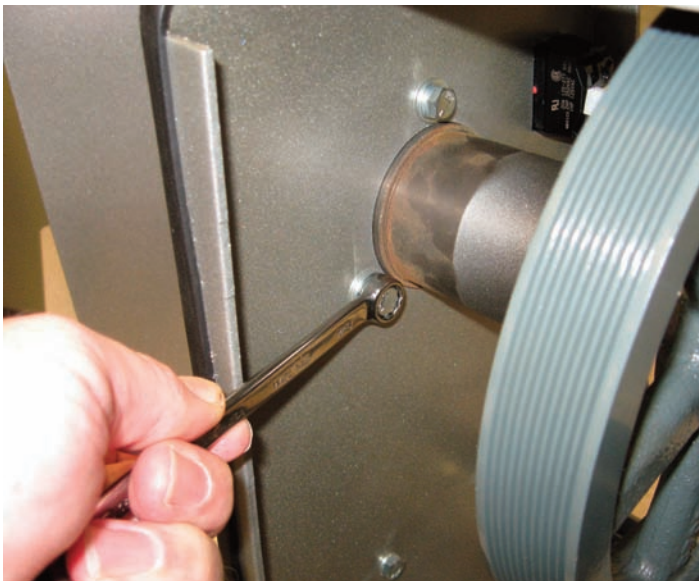
REPLACING DRIVE BELT:

1. DISCONNECT THE ELECTRICAL POWER CORD.
2. Remove the cover per Mechanics Maintenance removal of cover on page 1.2.
3. Loosen the nuts on the front motor screws. Do not completely remove the nuts.
4. With a long screwdriver or a pry bar, raise the front of the motor and remove the belt from the upper pulley. Unwrap the belt from the lower pulley and remove it from the machine housing.
5. Reinstall the belt in the reverse of the above procedures. Make sure the belt is aligned on the upper and lower pulleys. Turn the pulley by hand and make sure the belt is tracking evenly.
6. Tighten the front nuts on the motor until the bottom of the washer is $\frac{3}{4}$ inch above the motor base.

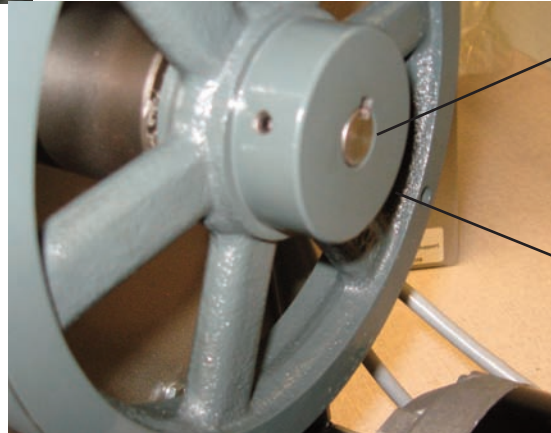


PULLEY AND PTO REMOVAL:

1. DISCONNECT THE ELECTRICAL POWER CORD.
2. Remove the cover per Mechanics Maintenance removal of cover on page 1.2.
3. Remove the drive belt per the instructions on page 2.1 Replacing Drive Belt.
4. Loosen the two set screws in the driven pulley (Figure 2 [4]).
NOTE: On the PM91 and MG8912, you must remove either the motor or the PTO to get the driven pulley off.
5. Remove the three screws and washers and pull the PTO assembly forward.
6. Remove the driven pulley and withdraw the PTO assembly from the power unit housing. It may be necessary to use a wheel puller to remove the pulley.
7. Reassemble the PTO and drive pulley in the reverse of the above procedure.
NOTE: the hub of the drive pulley faces the motor. Align the pulley hub flush with the end of the PTO shaft.
NOTE: The location of the thumb screw in the PTO.



Thumb screw orientation



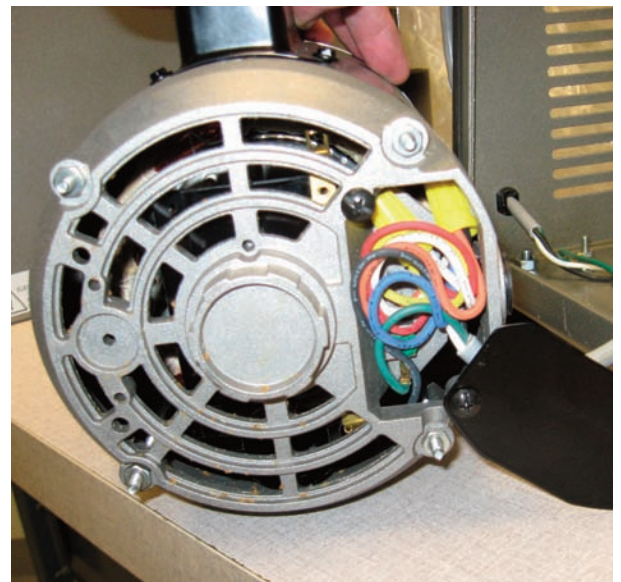
Hub flush with shaft.

NOTE:
Hub direction

MOTOR:

REMOVAL:

1. DISCONNECT THE ELECTRICAL POWER CORD.
2. Remove the cover per Mechanics Maintenance removal of cover on page 1.2.
3. Remove the drive belt per the instructions on page 2.1 Replacing Drive Belt.
4. Remove the nuts (Figure 2 [14]) and washers [15] securing the motor and remove the spring [18] and upper isolator [17].
5. Lift the motor up off the studs and remove it from the power unit housing.
NOTE: Remove the motor from the side the electrical cords are on.
6. Remove the access cover on the rear of the motor and disconnect the wire leads.
7. Loosen the two set screws in the motor pulley and remove the motor pulley and key.



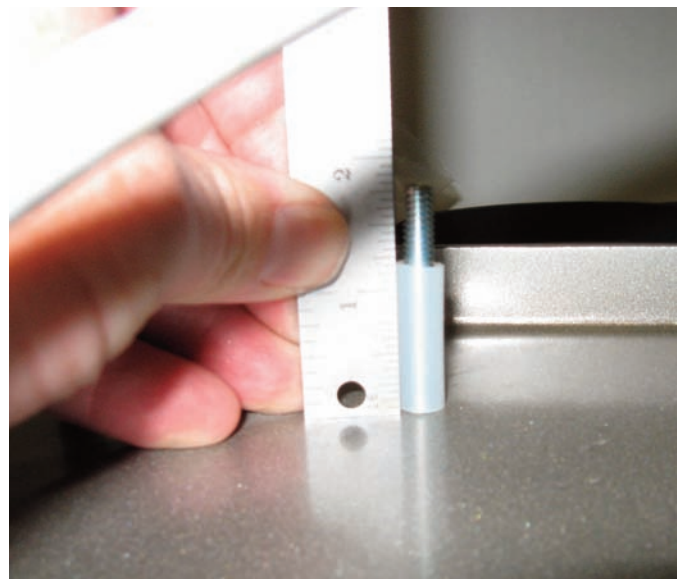
MOTOR:

INSTALLATION:

8. Place a 1 inch plastic sleeve on the two rear motor mounting studs (the longer studs).
9. Place a 1-1/8 inch plastic sleeve on the two front motor mounting studs.
10. Place a rubber isolator on the two rear motor mounting studs.
11. Install the motor pulley and key on the motor and tighten the two set screws.
12. Connect the motor leads to the motor and replace the access plate on the back of the motor.
13. Place the motor on the studs and over the plastic sleeves and install a rubber isolator on the two rear mounting studs and a plastic sleeve and spring on the two front studs.
14. Install a washer and nut on the four studs. Tighten the two rear nuts the rubber isolators should be compressed. Do not over tighten the nuts and destroy the plastic sleeves. Do not tighten the front two nuts at this time.
15. Install the drive belt per the instructions on page 2.1 Replacing Drive Belt.



Rear sleeves



Front sleeves



Rubber isolators



Front stud

Rear stud



Plastic sleeve

Front stud



Spring

Front stud



Rubber isolators



Nuts and washers

FEET AND LEGS:

The different models covered by this manual use a variety of different feet and leg configurations, however the removal and installation of the legs is essentially the same.

1. DISCONNECT THE ELECTRICAL POWER CORD.
2. Remove the cover per Mechanics Maintenance removal of cover on page 1.2.
3. Remove the nuts or screws securing the feet or legs from the inside of the housing. The parts diagrams on the following pages should be helpful in removing and replacing the legs and feet on the various models.

TUB CLIP:

Only the PM91 incorporates a tub clip on the front of the power unit. Removal of the tub clip is as follows:

1. DISCONNECT THE ELECTRICAL POWER CORD.
2. Remove the cover per Mechanics Maintenance removal of cover on page 1.2.
3. Remove the screws securing the clip from the inside of the housing. The parts diagrams on the following pages should be helpful in removing and replacing the tub clip.




Removal of front feet PM91



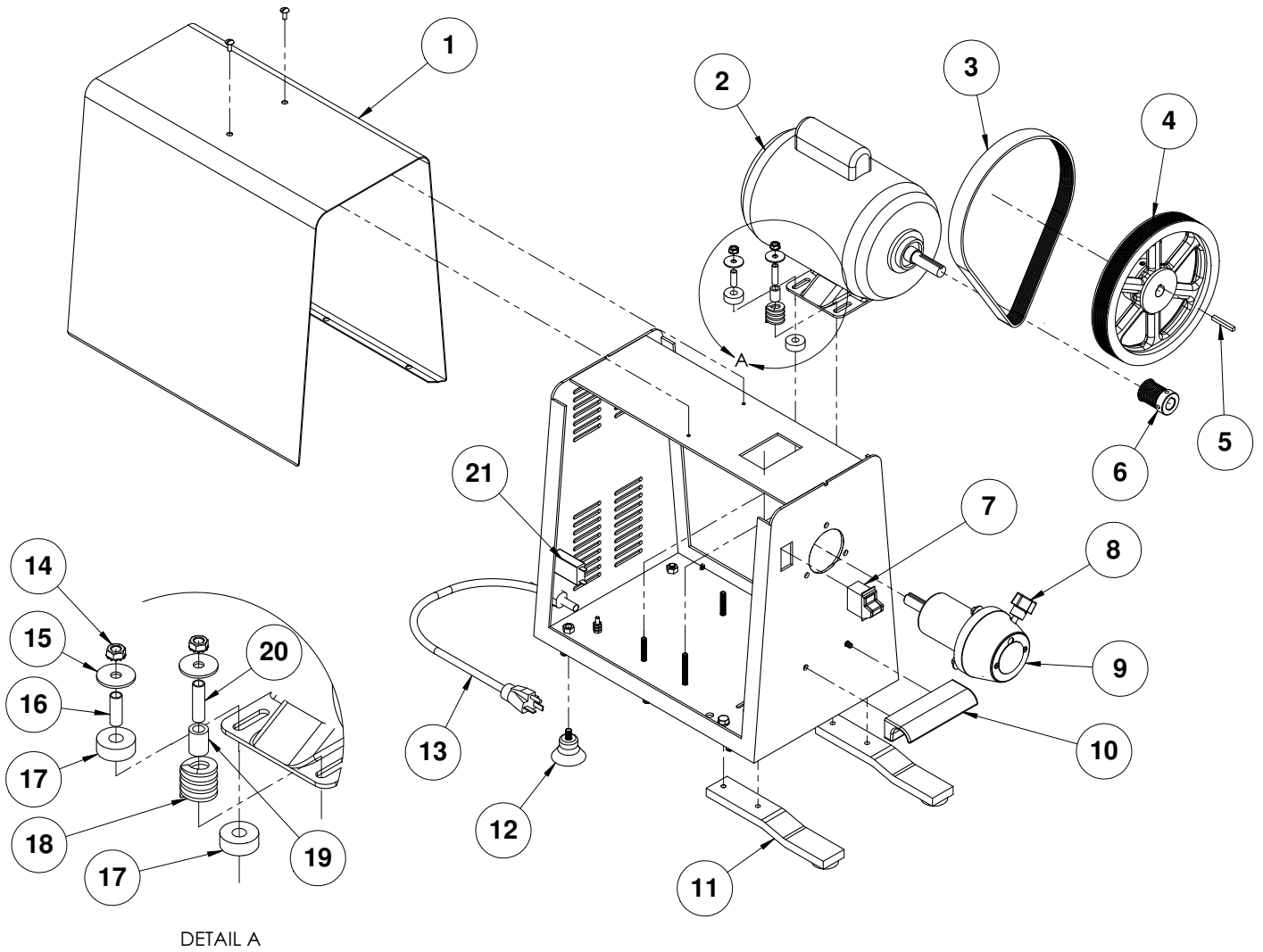
Removal of tub clip PM91

PM91 ASSEMBLY
FIGURE 2

ILLUS. No.	PART No.	DESCRIPTION	QTY.
1	8700002A	Cover Assembly	1
2	1030308	Motor, 1HP, 115/230V, 60HZ, 1PH	1
	1031309	Motor, 1HP, 220V, 50HZ, 1PH	1
	8700025A	Drive Set	1
3	8700010	Belt	1
4	8700025	Driven Pulley	1
5	4400230	Key 3/16 x 1.5 sq	1
6	8700024	Motor Pulley	1
7	8700035	On/Off Switch	1
8	8700019A	Thumb Screw Assembly	1
9	4400045L	PTO Assembly	1
	8800012A	PTO Adapter Set	2
10	8700103A	Tub Clip Assembly	1
11	8700106A	Leg Kit PM91	1
12	7510094A	Rubber Feet Set	1
13	8800100A	Power Cord Assembly, 115V	1
	8800100-2A	Power Cord Assembly, 220V	1
	8700026A	Motor Mounting Hardware Kit (Includes 14-20)	1
14	4400141	Kep Nut, 1/4-20	4
15	1200075	Flat Washer, 1/4	4
16	4400416	Plastic Sleeve, 1 inch (NFS)	2
17	8700032	Isolator Spacer (NFS)	4
18	8700026	Spring (NFS)	2
19	4400417	Plastic Sleeve (NFS)	2
20	4400415	Plastic Sleeve, 1-1/8 inch (NFS)	2
21	4400249	Circuit Breaker (Canada Only)	1

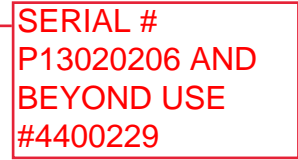

SERIAL #
P13020206 AND
BEYOND USE
#4400229

PM91 ASSEMBLY
FIGURE 2

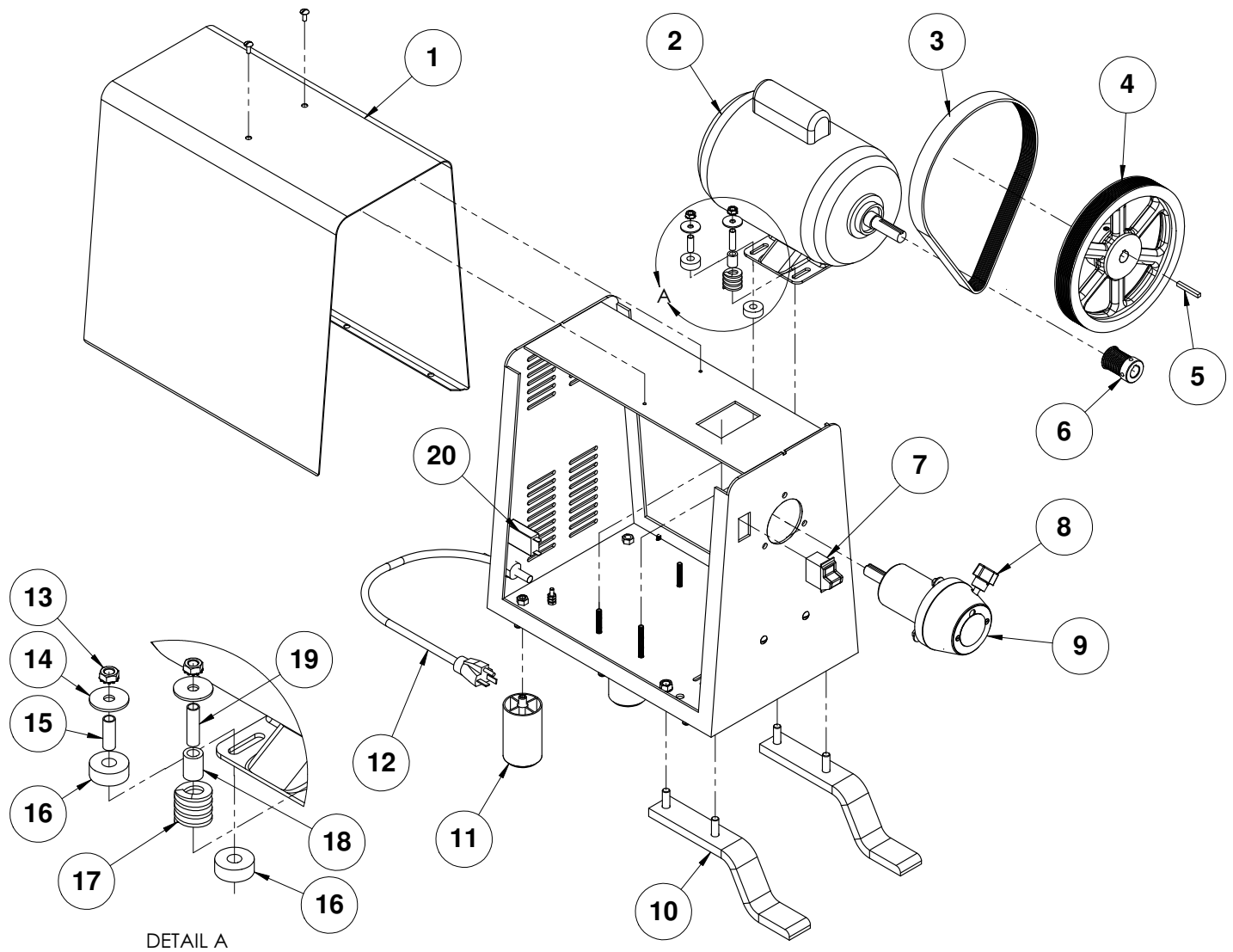


PM91G ASSEMBLY
FIGURE 3

ILLUS. No.	PART No.	DESCRIPTION	QTY.
1	8700002A	Cover Assembly	1
2	1030308	Motor, 1HP, 115/230V, 60HZ, 1PH	1
	1031309	Motor, 1HP, 220V, 50HZ, 1PH	1
	8700025A	Drive Set	1
3	8700010	Belt	1
4	8700025	Driven Pulley	1
5	4400230	Key	1
6	8700024	Motor Pulley	1
7	8700035	On/Off Switch	1
8	8700019A	Thumb Screw Assembly	1
9	4400045L	PTO Assembly	1
	8800012A	PTO Adapter Set	2
10	8700211A	Leg Kit PM91G	1
11	8700225A	Rear Leg Kit PM91G	1
12	8800100A	Power Cord Assembly, 115V	1
	8800100-2A	Power Cord Assembly, 220V	1
	8700026A	Motor Mounting Hardware Kit (Includes 13-19)	1
13	4400141	Kep Nut, 1/4-20	4
14	1200075	Flat Washer, 1/4	4
15	4400416	Plastic Sleeve, 1 inch (NFS)	2
16	8700032	Isolator Spacer (NFS)	4
17	8700026	Spring (NFS)	2
18	4400417	Plastic Sleeve (NFS)	2
19	4400415	Plastic Sleeve, 1-1/8 inch (NFS)	2
20	4400249	Circuit Breaker (Canada Only)	1


SERIAL #
P13020206 AND
BEYOND USE
#4400229

PM91G ASSEMBLY
FIGURE 3



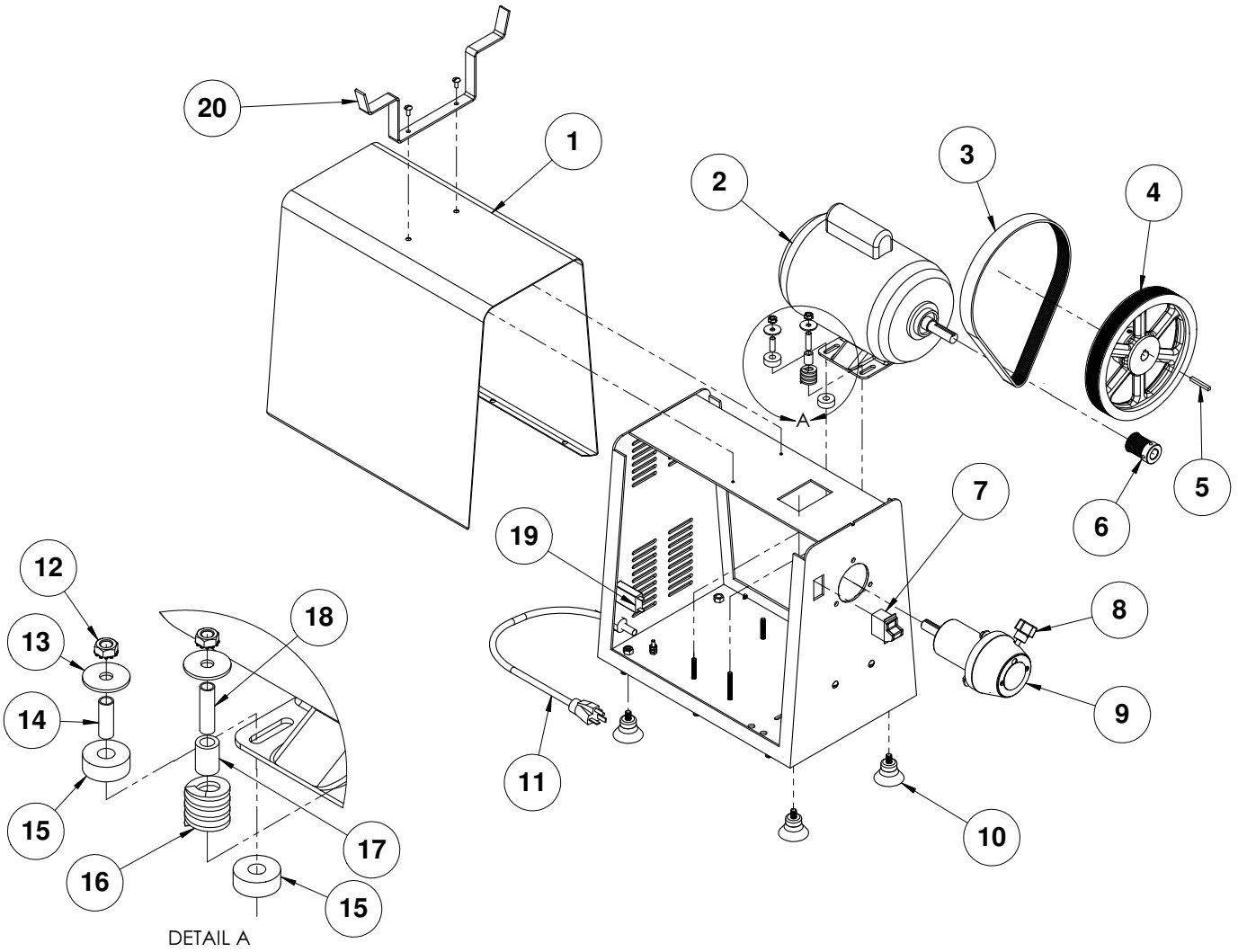
MG8912 ASSEMBLY
FIGURE 4

ILLUS. No.	PART No.	DESCRIPTION	QTY.
1	8700002A	Cover Assembly	1
2	1030308	Motor, 1HP, 115/230V, 60HZ, 1PH	1
	1031309	Motor, 1HP, 220V, 50HZ, 1PH	1
	8700025A	Drive Set	1
3	8700010	Belt	1
4	8700025	Driven Pulley	1
5	4400230	Key	1
6	8700024	Motor Pulley	1
7	8700035	On/Off Switch	1
8	8700019A	Thumb Screw Assembly	1
9	4400045L	PTO Assembly	1
	8800012A	PTO Adapter Set	2
10	8710094A	Rubber Feet Set	2
11	8800100A	Power Cord Assembly, 115V	1
	8800100-2A	Power Cord Assembly, 220V	1
	8700026A	Motor Mounting Hardware Kit (Includes 12-18)	1
12	4400141	Kep Nut, 1/4-20	4
13	1200075	Flat Washer, 1/4	4
14	4400416	Plastic Sleeve, 1 inch (NFS)	2
15	8700032	Isolator Spacer (NFS)	4
16	8700026	Spring (NFS)	2
17	4400417	Plastic Sleeve (NFS)	2
18	4400415	Plastic Sleeve, 1-1/8 inch (NFS)	2
19	4400249	Circuit Breaker (Canada Only)	1
20	8700012A	Pan Support Assembly	1

SERIAL #
P13020206 AND
BEYOND USE
#4400229



MG8912 ASSEMBLY
FIGURE 4



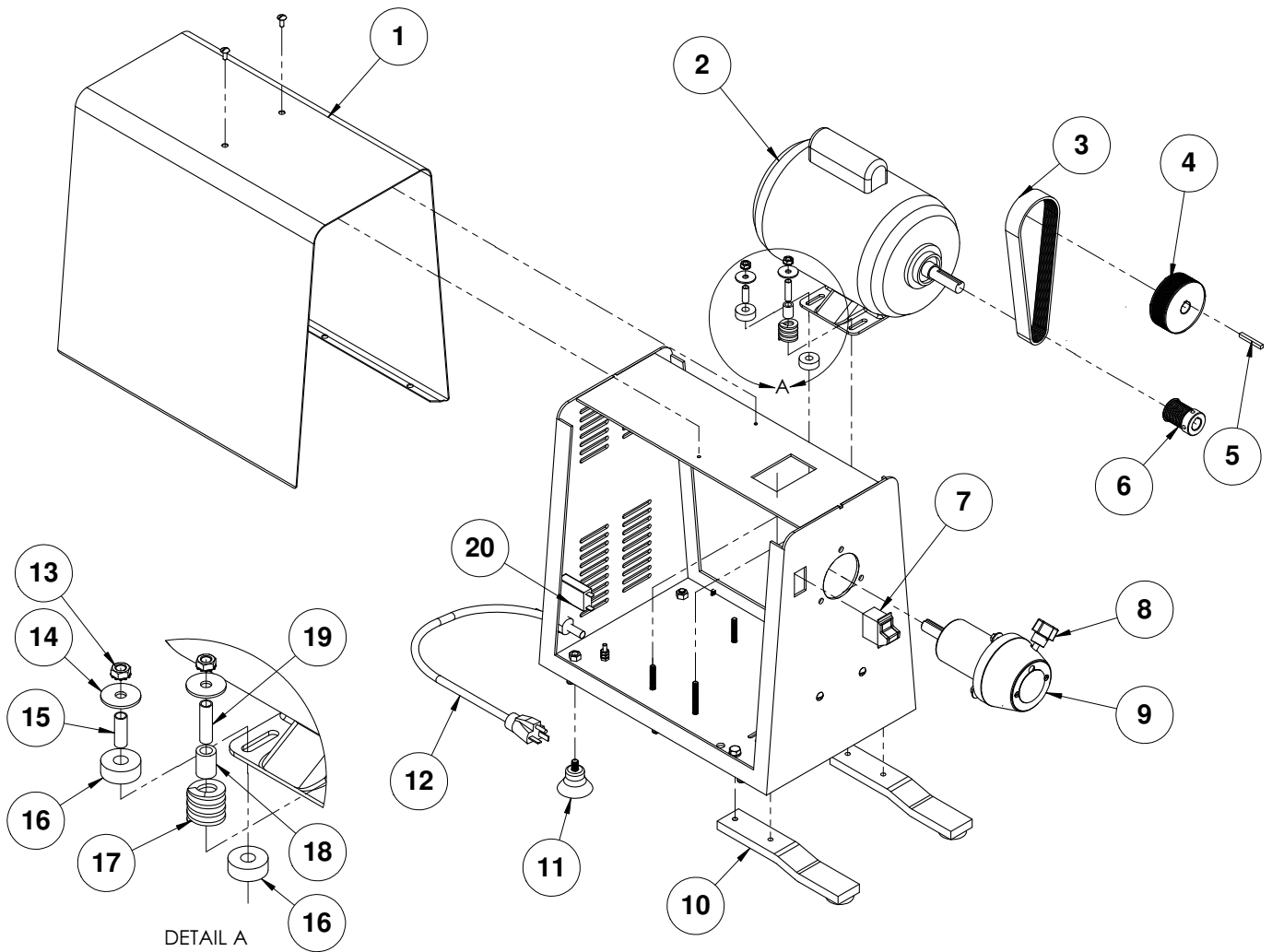
VS2000 ASSEMBLY
FIGURE 5

ILLUS. No.	PART No.	DESCRIPTION	QTY.
1	8700002A	Cover Assembly	1
2	1030308	Motor, 1HP, 115/230V, 60HZ, 1PH	1
	1031309	Motor, 1HP, 220V, 50HZ, 1PH	1
3	8700310	Belt, 320J10	1
4	8700311	Driven Pulley	1
5	4400230	Key	1
6	8700024	Motor Pulley	1
7	8700035	On/Off Switch	1
8	8700019A	Thumb Screw Assembly	1
9	4400045L	PTO Assembly	1
	8800012A	PTO Adapter Set	2
10	8700106A	Leg Kit PM91	1
11	7510094A	Rubber Feet Set	1
12	8800100A	Power Cord Assembly, 115V	1
	8800100-2A	Power Cord Assembly, 220V	1
	8700026A	Motor Mounting Hardware Kit (Includes 13-19)	1
13	4400141	Kep Nut, 1/4-20	4
14	1200075	Flat Washer, 1/4	4
15	4400416	Plastic Sleeve, 1 inch (NFS)	2
16	8700032	Isolator Spacer (NFS)	4
17	8700026	Spring (NFS)	2
18	4400417	Plastic Sleeve (NFS)	2
19	4400415	Plastic Sleeve, 1-1/8 inch (NFS)	2
20	4400249	Circuit Breaker (Canada Only)	1

SERIAL #
P13020206 AND
BEYOND USE
#4400229



VS2000 ASSEMBLY
FIGURE 5





3 Old Rockingham Road, Salem, N.H. 03079-2140 Telephone -603-893-6191 Fax 1-603-893-1249

TOLL FREE ORDERING FAX 1-800-356-5614