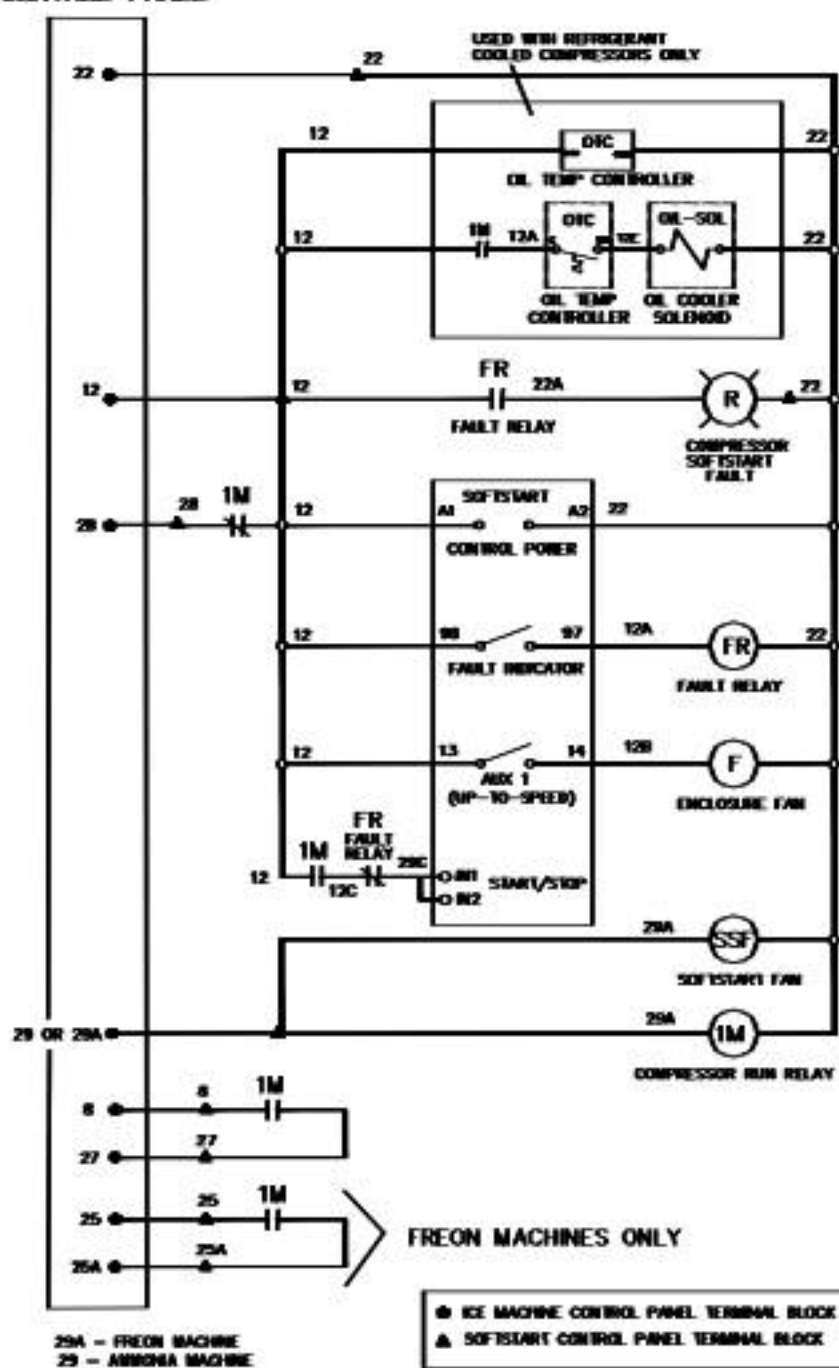
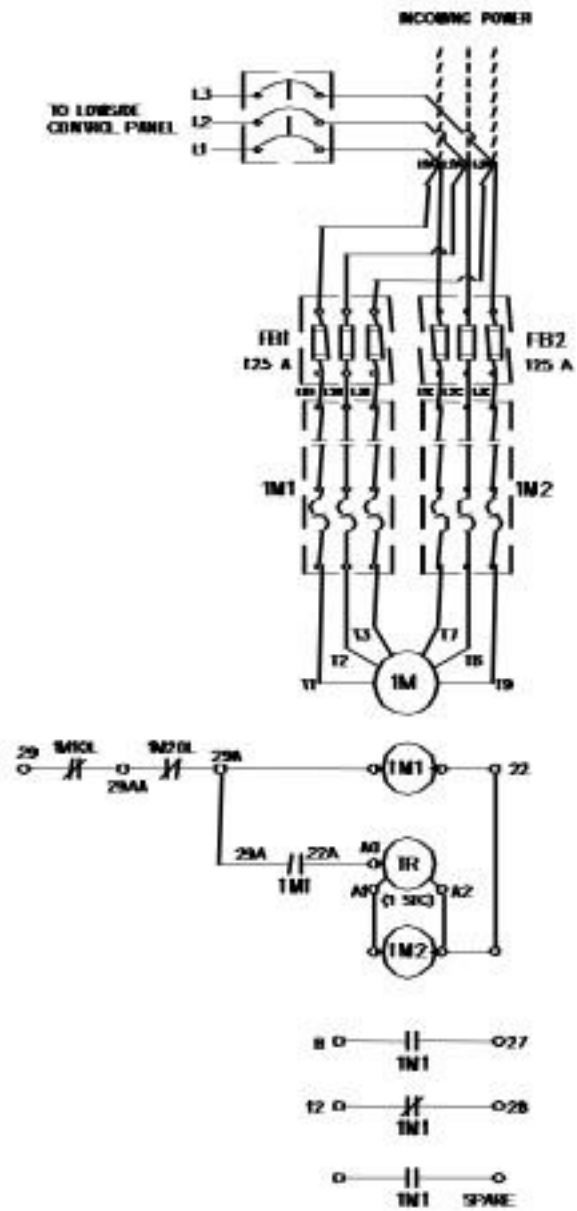
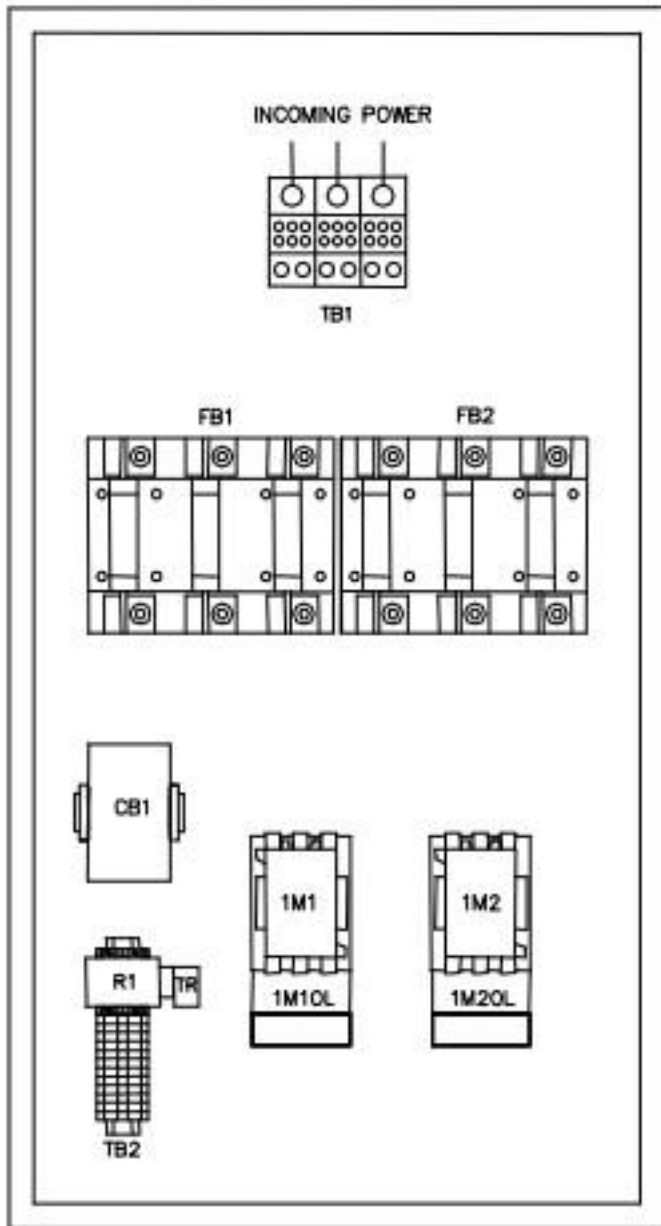
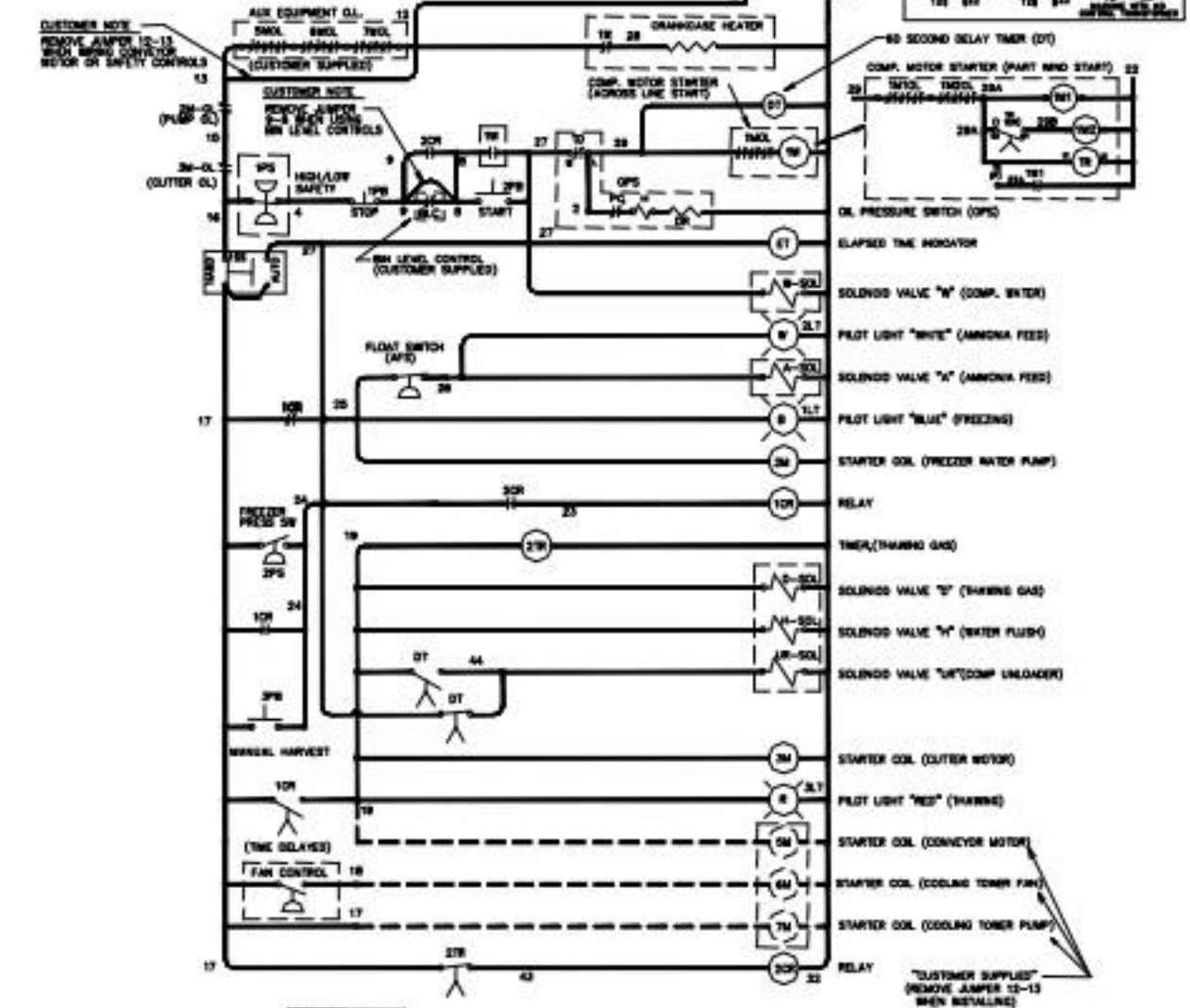
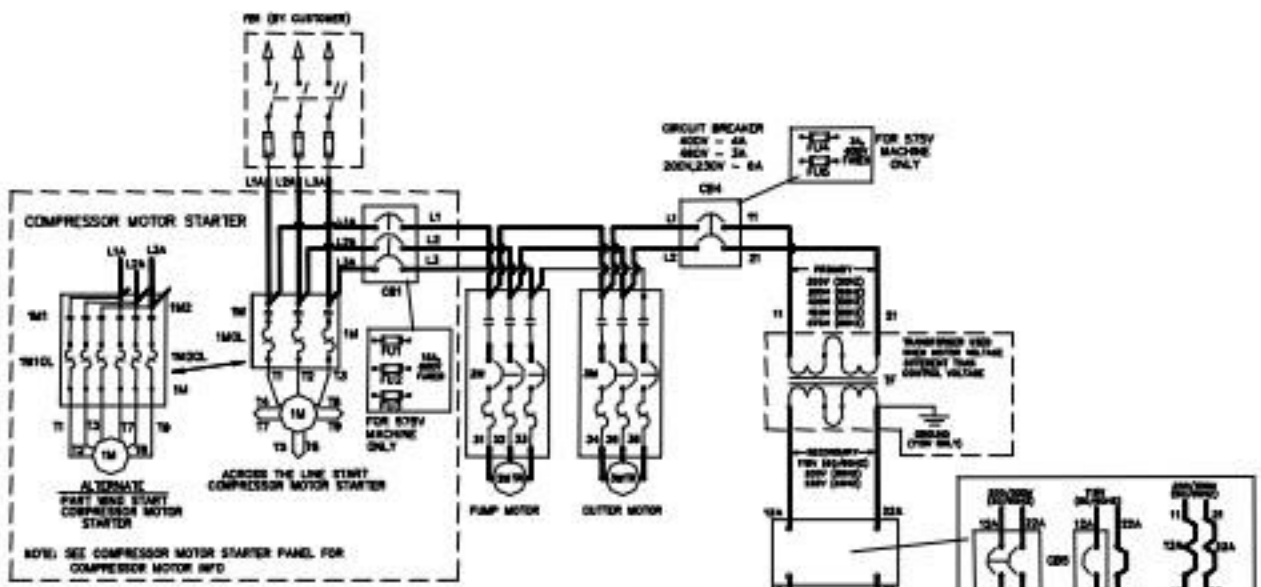
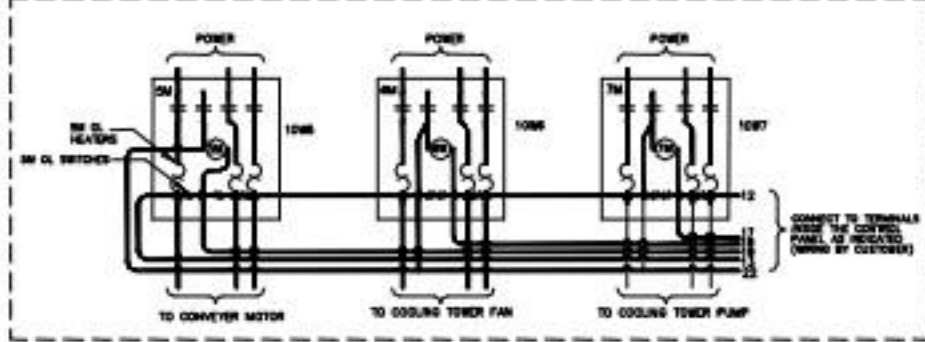


LOWSIDE CONTROL PANEL







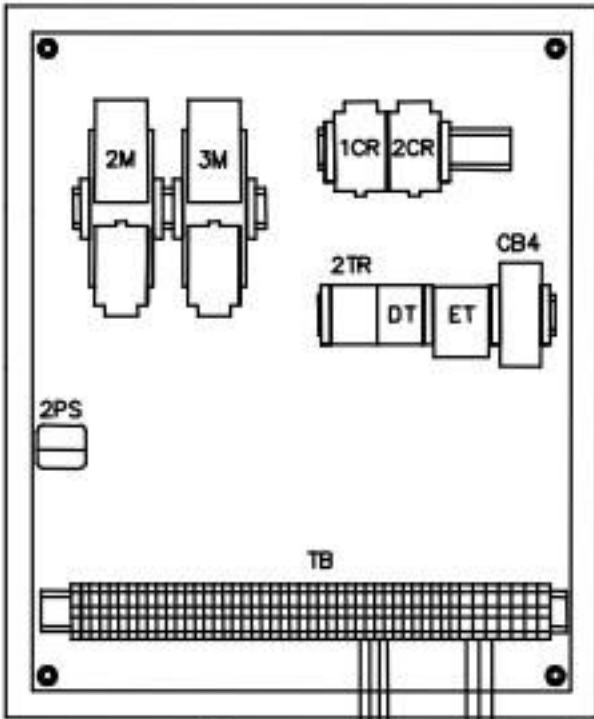
"CUSTOMER SUPPLIED"
REMOVE JUMPER 12-13
WHEN INSTALLING

COMPRESSOR MOTOR STARTER CONTROL PANEL

NOTE:

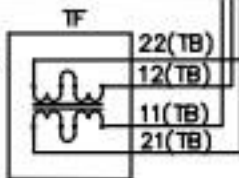
PART-WIND CONFIGURATION SHOWN. FOR ACROSS-LINE CONFIGURATION, INCOMING POWER IS CONNECTED TO COMPRESSOR CONTACTOR (1M) IN COMPRESSOR MOTOR STARTER CONTROL PANEL.

LOWSIDE CONTROL PANEL



SECONDARY

PRIMARY



L1 (TB)
L2 (TB)
L3 (TB)

NOTE:

LOWSIDE CONTROL PANEL POWERED FROM L1, L2, AND L3 OF COMPRESSOR MOTOR STARTER CONTROL PANEL.

