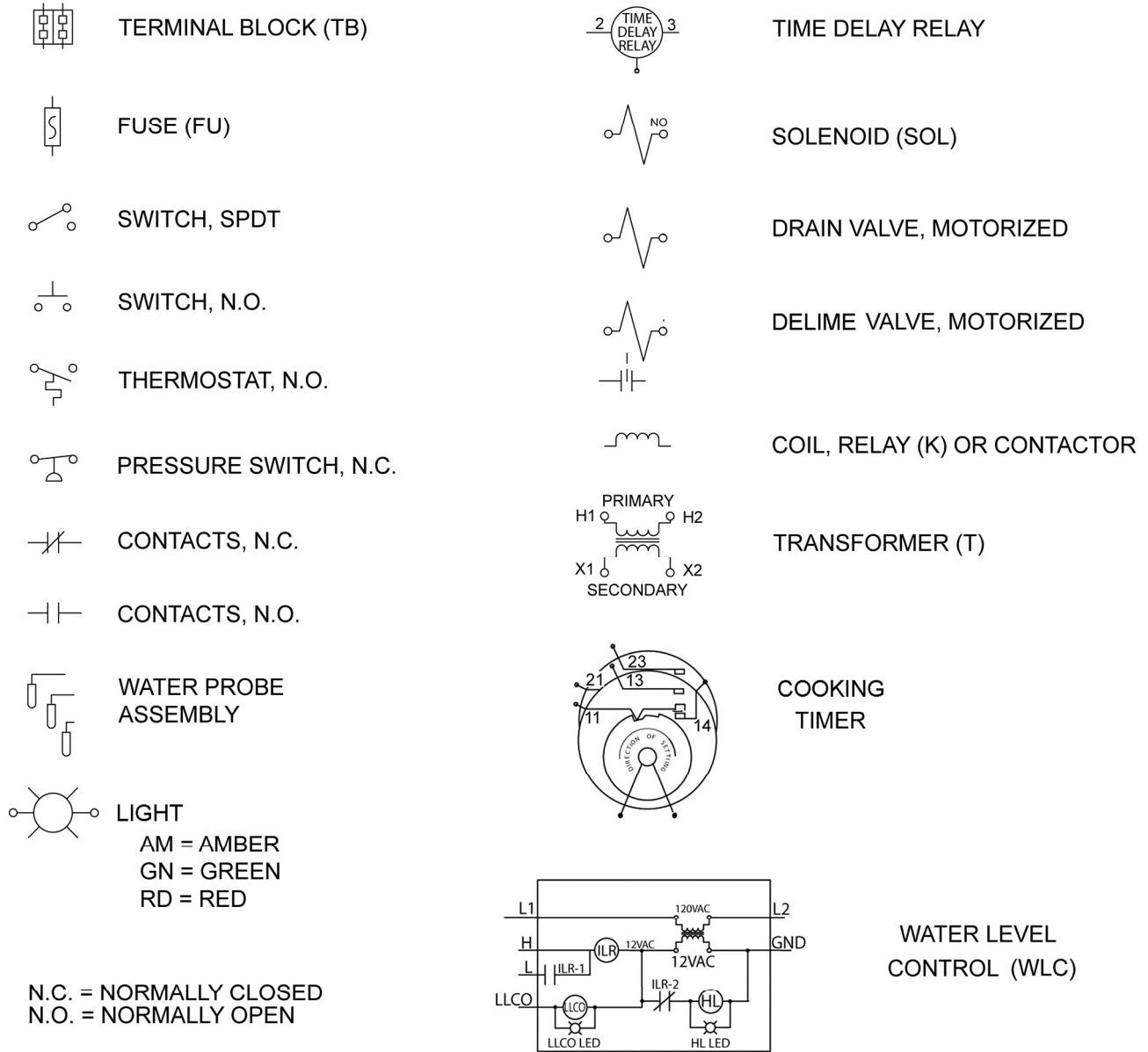


LEGEND OF ELECTRICAL SYMBOLS



19222

Fig. 81

MAIN TRANSFORMER CONNECTIONS

H1	---	COM
H2	---	208V
H3	---	240V
H4	---	480V

**C24EA 6 & 10 SCHEMATIC
208V/240V/480V**

1FU & 2FU = 3A (SLOW BLOW)

L1 L2

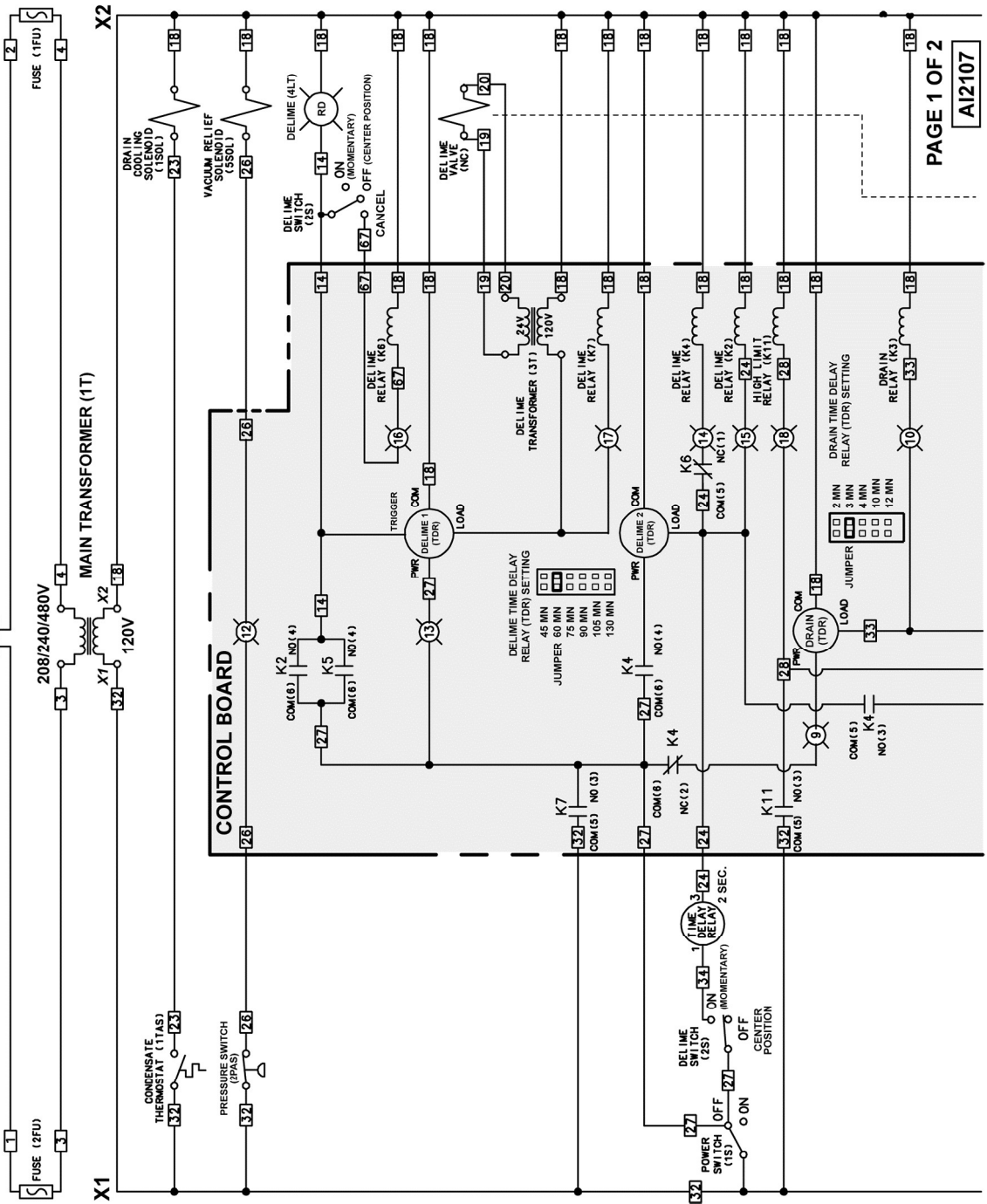


Fig. 82

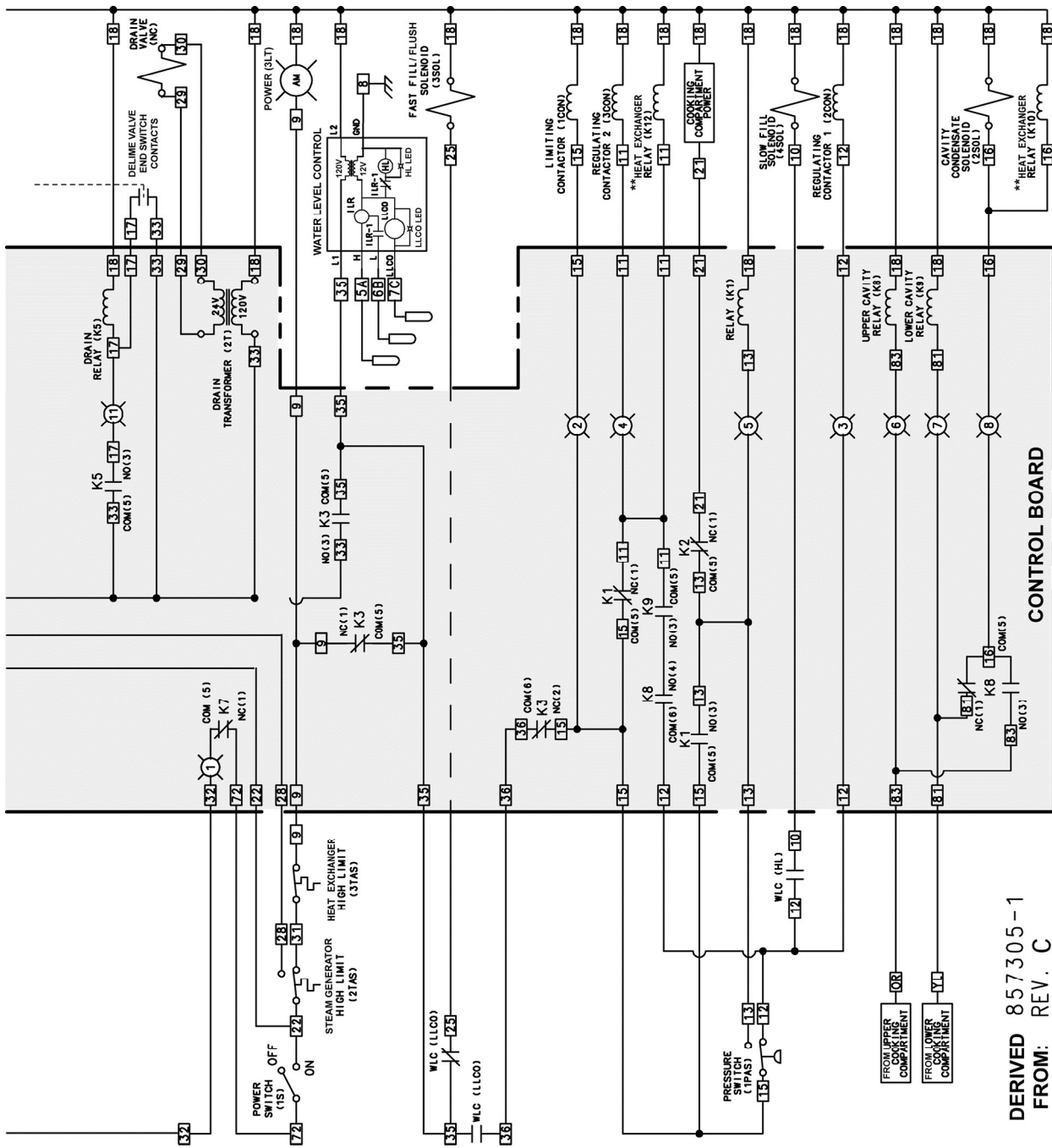


Fig. 83

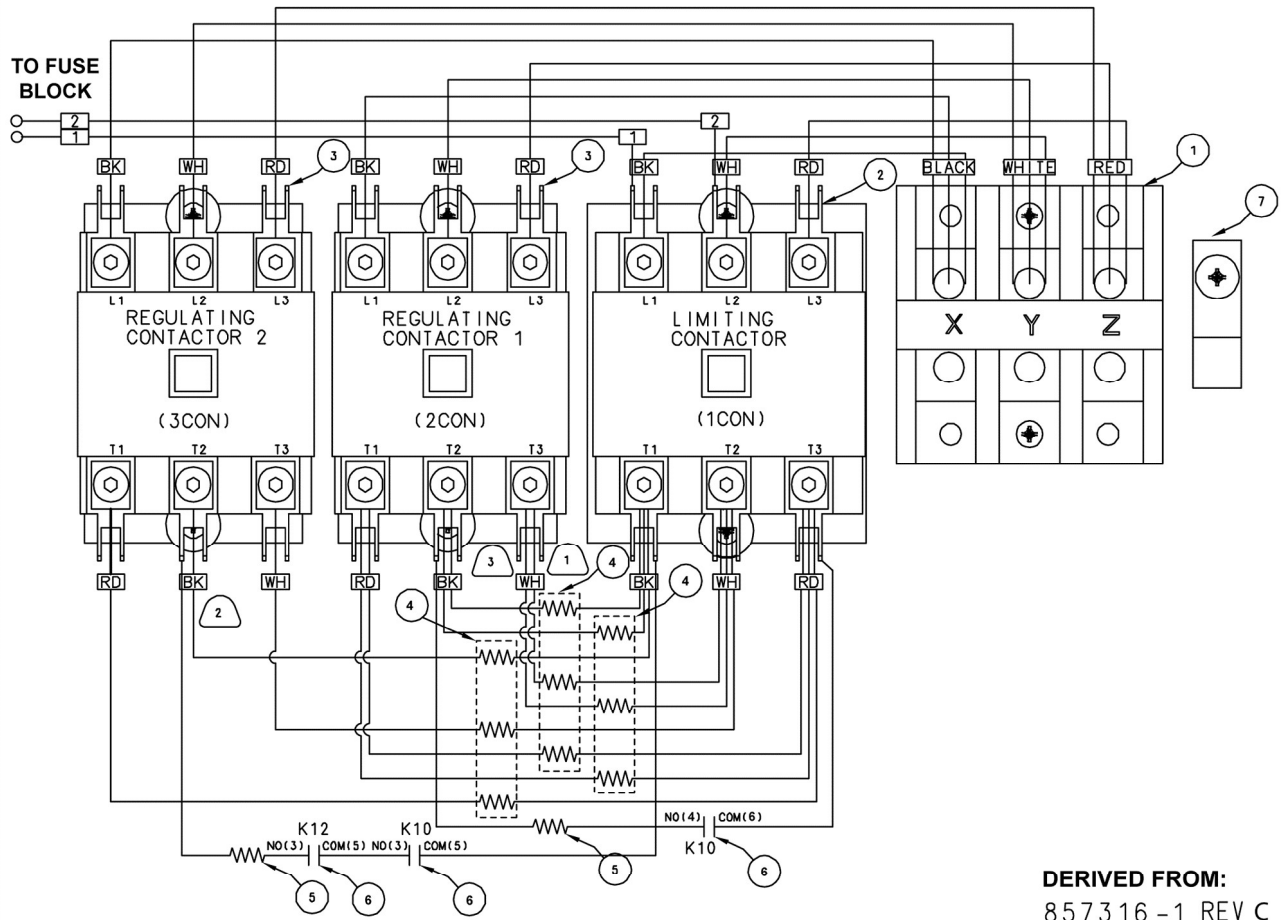
DERIVED 857305-1
FROM: REV. C

** SEE HEATING ELEMENT WIRING DIAGRAMS FOR K10 AND K12 CONTACTS PAGE 2 OF 2 AI2108

208V 3 PHASE

SEE FIELD CONVERSION NOTES FOR 240V

ITEM	DESCRIPTION	QUANTITY	
		6 PAN	10 PAN
1	TERMINAL BLOCK	1	1
2	LIMITING CONTACTOR	1	1
3	REGULATING CONTACTOR	2	2
4	GENERATOR HEATING ELE.	2	3
5	HEAT EXCHANGER ELE.	2	0
	HEAT EXCHANGER ELE.	0	2
6	RELAY	2	2
7	GROUND LUG	1	1



DERIVED FROM:
857316 -1 REV C

FIELD CONVERSION NOTES

- 1 6 PAN MACHINES USE TWO GENERATOR HEATING ELEMENTS. ONE ELEMENT BETWEEN THE LIMITING CONTACTOR AND REGULATING CONTACTOR 1, IS NOT PRESENT
- 2 FOR 6 PAN MACHINES, TO CONVERT TO 240V, DISCONNECT THE BLACK ELEMENT LEAD FROM REGULATING CONTACTOR 2 AND ITS CORRESPONDING LEAD FROM THE LIMITING CONTACTOR. MOVE THE MAIN TRANSFORMER PRIMARY INPUT FROM THE H2 (208V) POSITION TO THE H3 (230V) POSITION
- 3 FOR 10 PAN MACHINES, TO CONVERT TO 240V, DISCONNECT THE BLACK ELEMENT LEAD FROM REGULATING CONTACTOR 2 AND THE WHITE ELEMENT LEAD FROM REGULATING CONTACTOR 1 AND THEIR CORRESPONDING LEADS FROM THE LIMITING CONTACTOR. MOVE THE MAIN TRANSFORMER PRIMARY INPUT WIRE #4 FROM THE H2 (208V) POSITION TO THE H3 (230V) POSITION

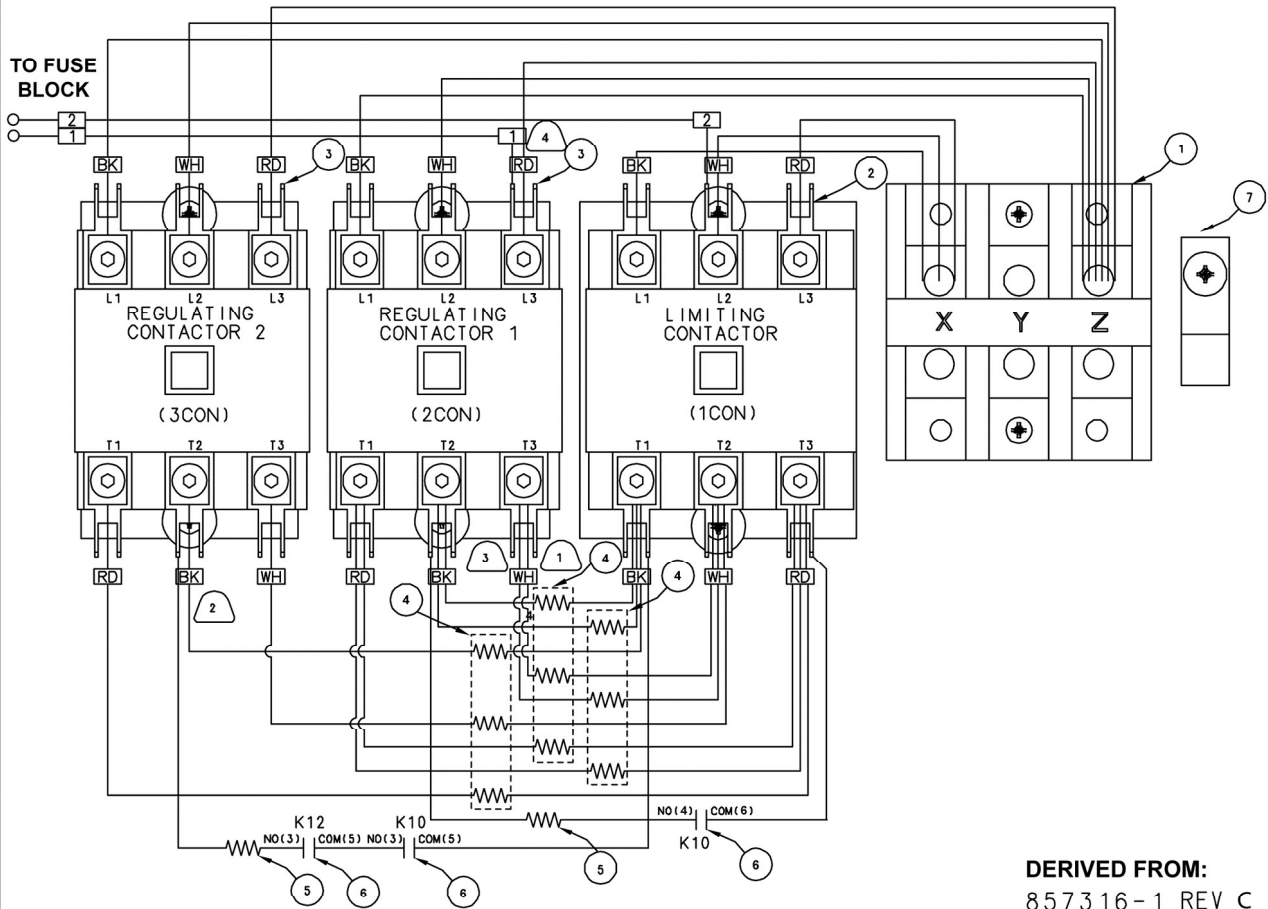
AI2109

Fig. 84

208V 1 PHASE

SEE FIELD CONVERSION NOTES FOR 240V

ITEM	DESCRIPTION	QUANTITY	
		6 PAN	10 PAN
1	TERMINAL BLOCK	1	1
2	LIMITING CONTACTOR	1	1
3	REGULATING CONTACTOR	2	2
4	GENERATOR HEATING ELE.	2	3
5	HEAT EXCHANGER ELE.	2	0
	HEAT EXCHANGER ELE.	0	2
6	RELAY	2	2
7	GROUND LUG	1	1



DERIVED FROM:
857316-1 REV C

FIELD CONVERSION NOTES

- 1 6 PAN MACHINES USE TWO GENERATOR HEATING ELEMENTS. ONE ELEMENT BETWEEN THE LIMITING CONTACTOR AND REGULATING CONTACTOR 1, IS NOT PRESENT
- 2 FOR 6 PAN MACHINES, TO CONVERT TO 240V, DISCONNECT THE BLACK ELEMENT LEAD FROM REGULATING CONTACTOR 2 AND ITS CORRESPONDING LEAD FROM THE LIMITING CONTACTOR. MOVE THE MAIN TRANSFORMER PRIMARY INPUT FROM THE H2 (208V) POSITION TO THE H3 (230V) POSITION
- 3 FOR 10 PAN MACHINES, TO CONVERT TO 240V, DISCONNECT THE BLACK ELEMENT LEAD FROM REGULATING CONTACTOR 2 AND THE WHITE ELEMENT LEAD FROM REGULATING CONTACTOR 1 AND THEIR CORRESPONDING LEADS FROM THE LIMITING CONTACTOR. MOVE THE MAIN TRANSFORMER PRIMARY INPUT WIRE #4 FROM THE H2 (208V) POSITION TO THE H3 (230V) POSITION
- 4 SINGLE PHASE MACHINES HAVE WIRE #1 ON L3 OF REGULATING CONTACTOR 1 RATHER THAN L1 OF THE LIMITING CONTACTOR

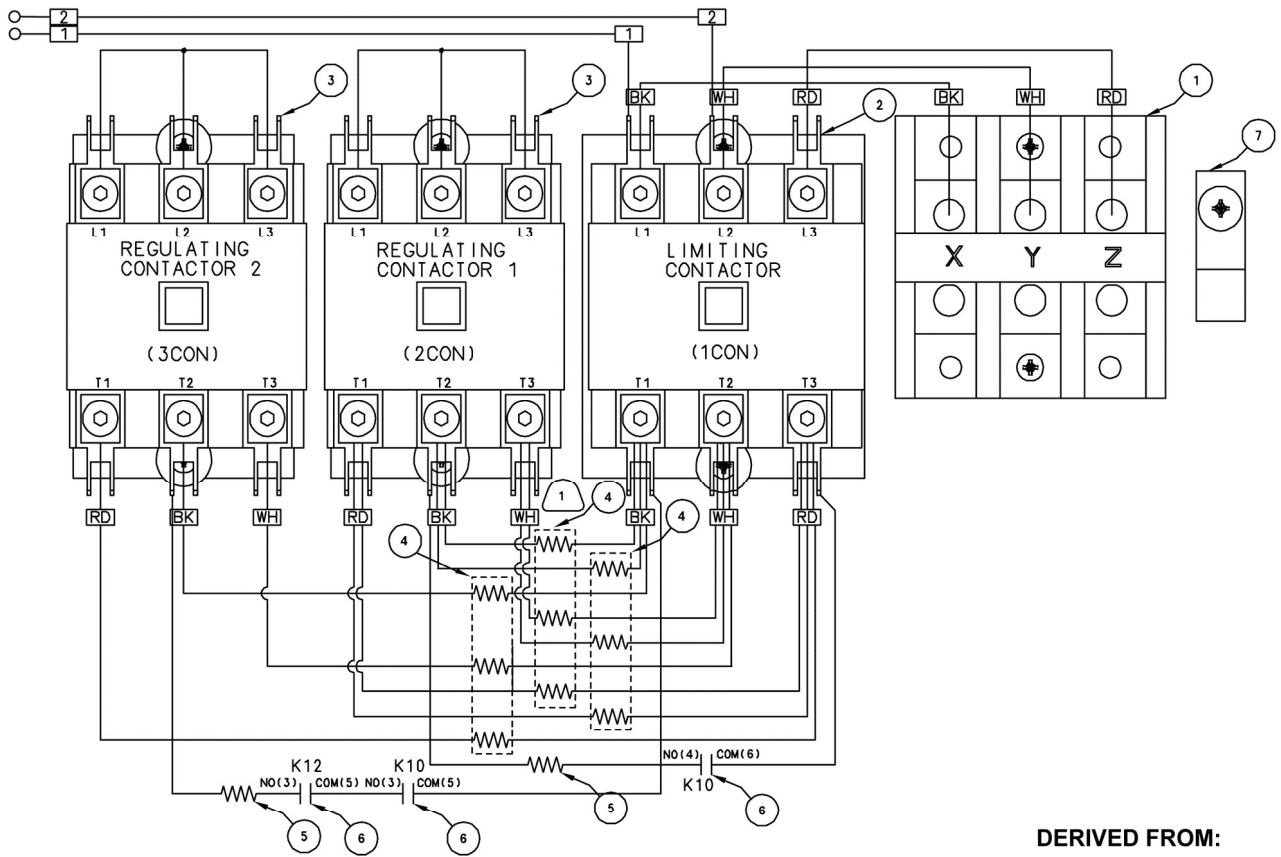
AI2110

Fig. 85

480V 3 PHASE

ITEM	DESCRIPTION	QUANTITY	
		6 PAN	10 PAN
1	TERMINAL BLOCK	1	1
2	LIMITING CONTACTOR	1	1
3	REGULATING CONTACTOR	2	2
4	GENERATOR HEATING ELE.	2	3
5	HEAT EXCHANGER ELE.	2	0
	HEAT EXCHANGER ELE.	0	2
6	RELAY	2	2
7	GROUND LUG	1	1

TO FUSE
BLOCK



DERIVED FROM:
857316 - 2 REV C

FIELD CONVERSION NOTE



6 PAN MACHINES USE TWO GENERATOR HEATING ELEMENTS. ONE ELEMENT BETWEEN THE LIMITING CONTACTOR AND REGULATING CONTACTOR 1, IS NOT PRESENT

A12111

Fig. 86