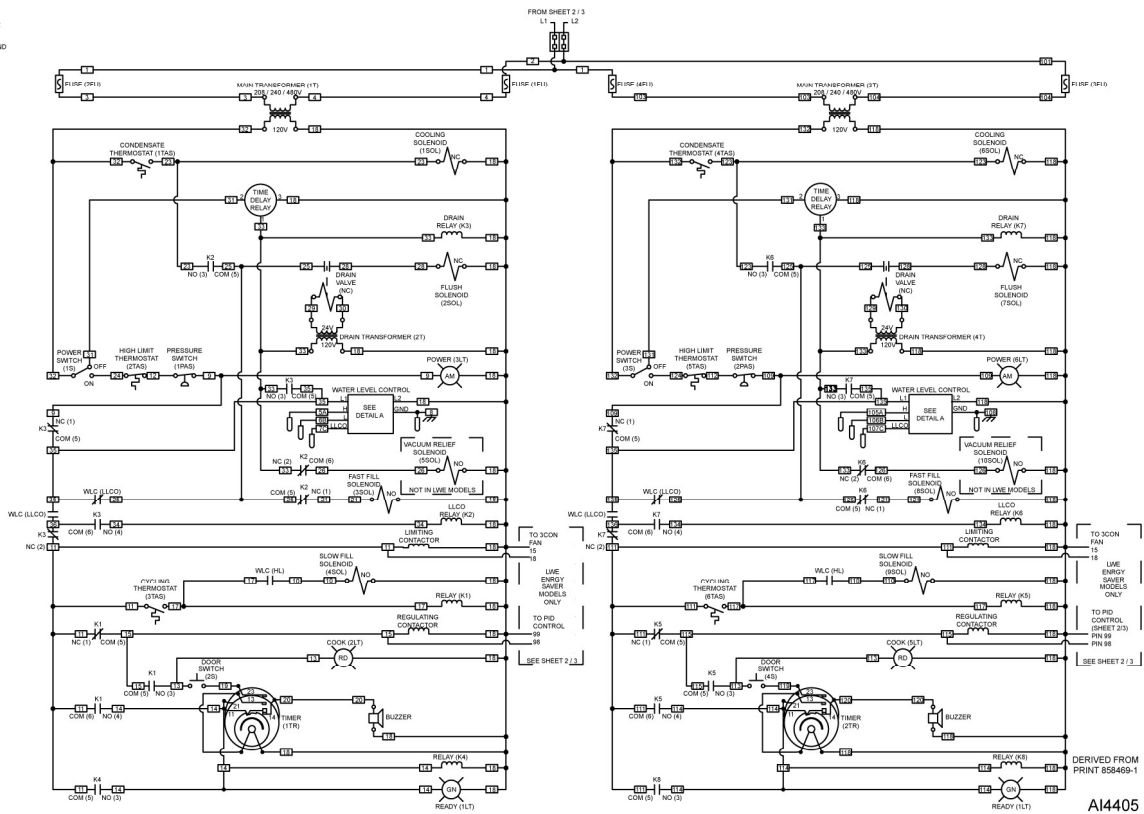
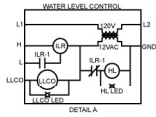


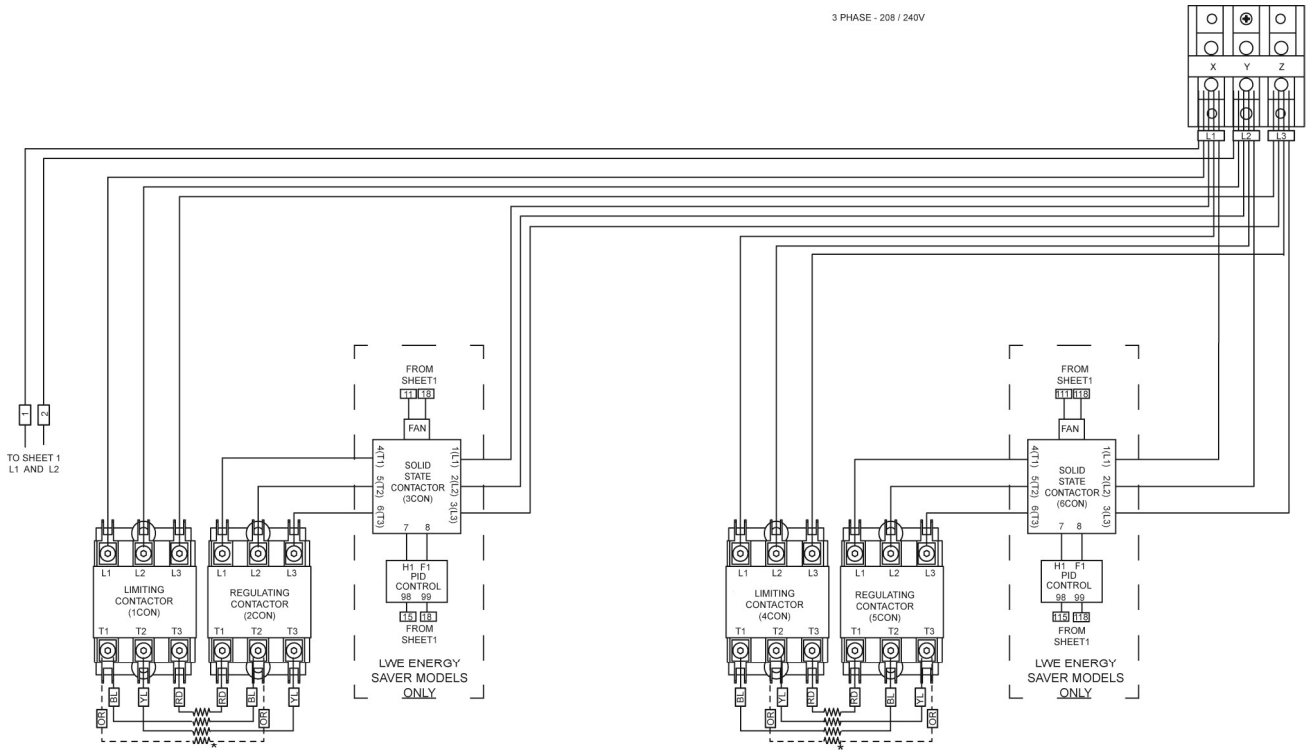
# DIAGRAMS

## WIRING DIAGRAMS



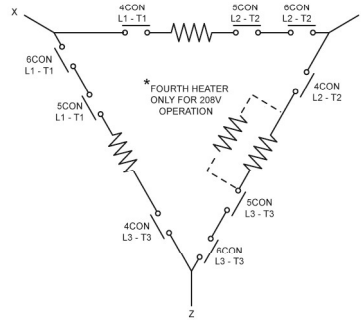
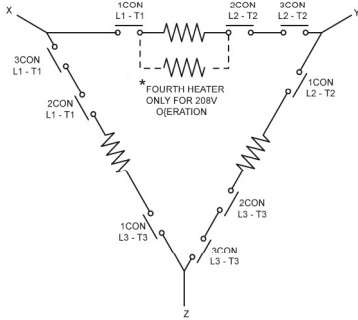
C24ET6 / 10 Wiring Diagram (Sheet 1)

3 PHASE - 208 / 240V



CIRCUIT FOR UPPER COMPARTMENT

CIRCUIT FOR LOWER COMPARTMENT

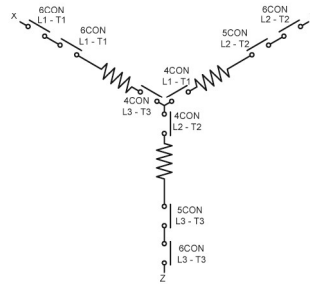
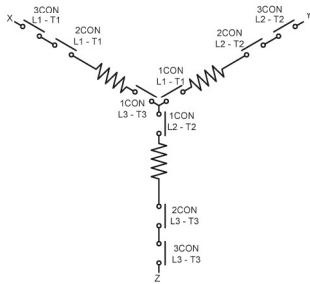
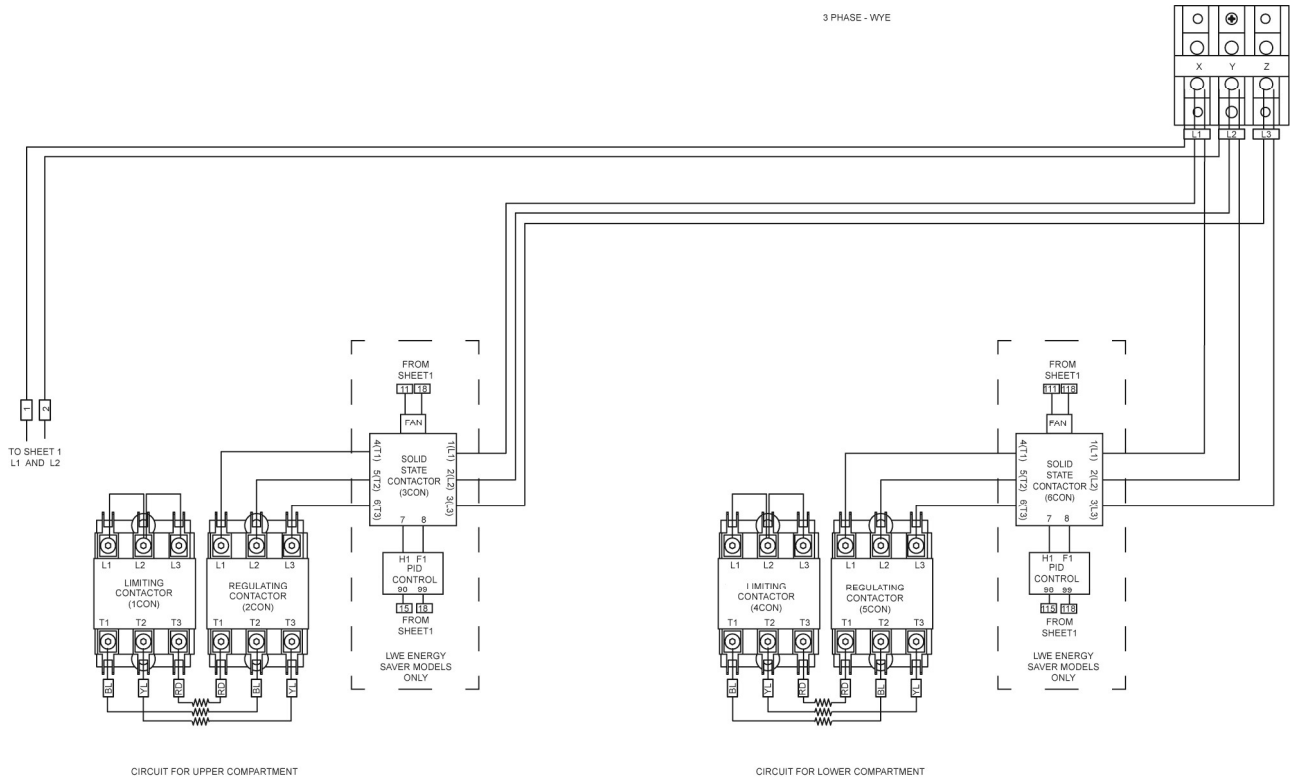


DERIVED FROM  
PRINT 858464-1

A14406

C24ET6 / 10 Wiring Diagram (Sheet 2)

# C24ET-SERIES STEAMERS - DIAGRAMS

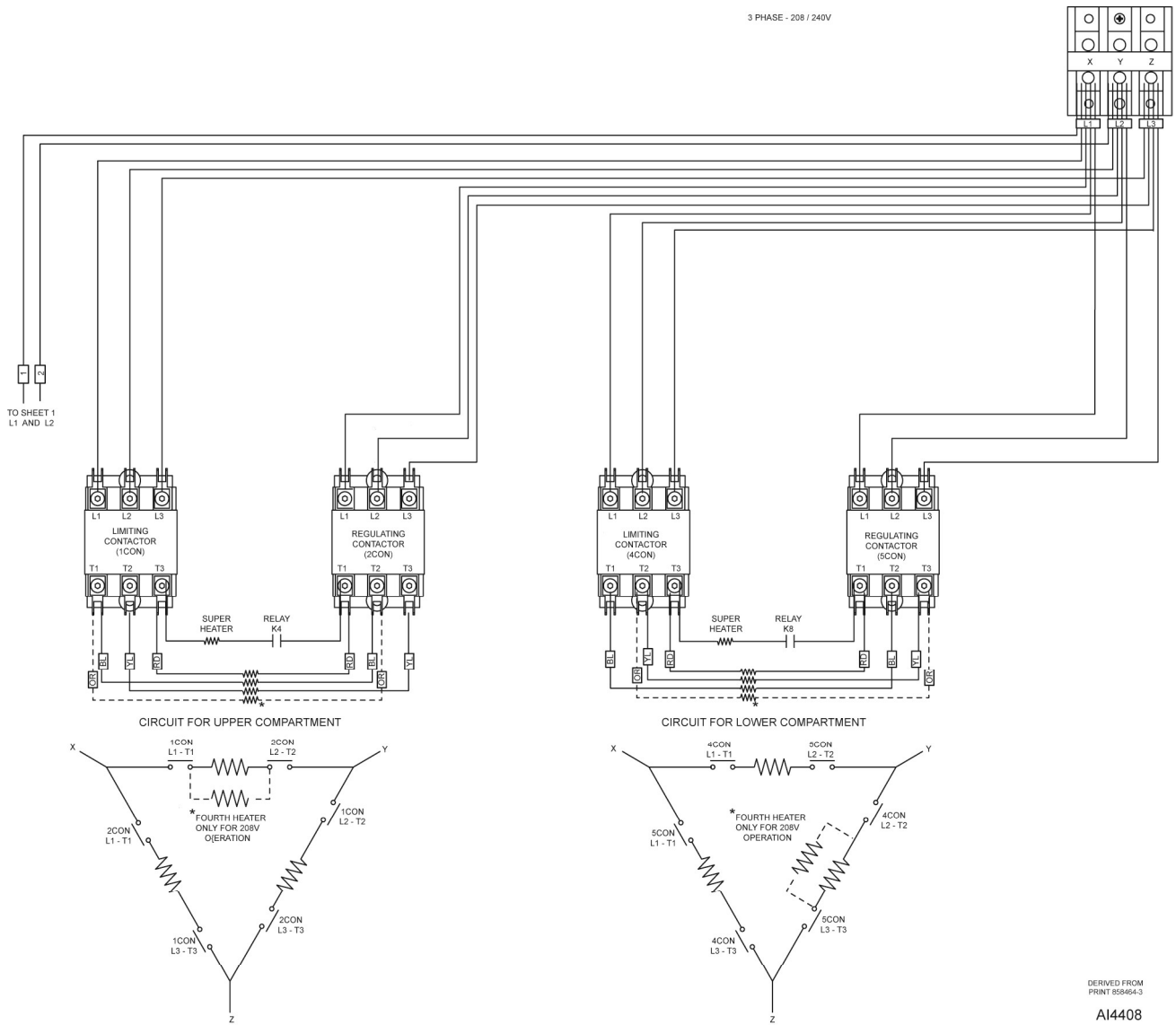


DERIVED FROM  
PRINT 856464-2

AI4407

**C24ET6 / 10 Wiring Diagram (Sheet 3)**

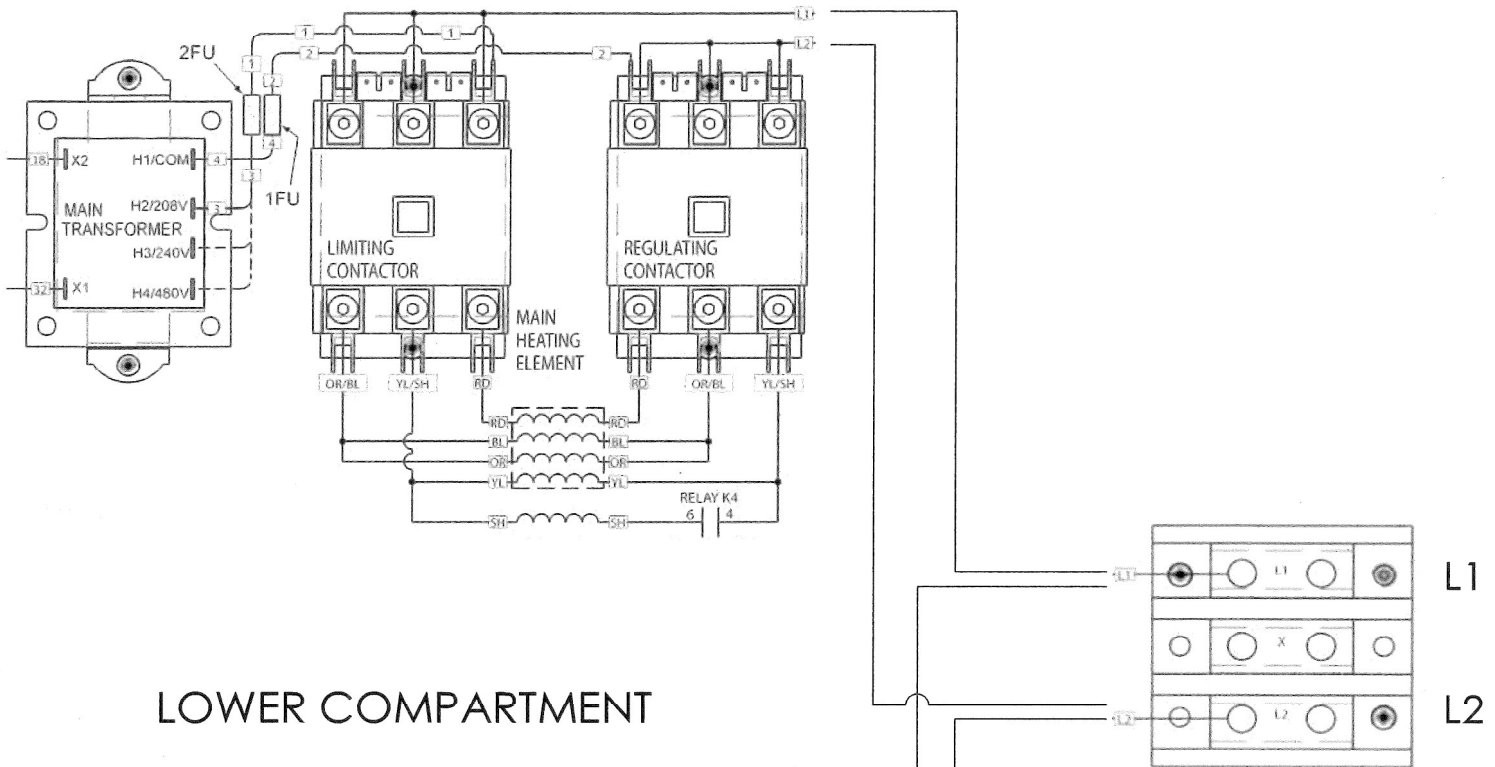
3 PHASE - 208 / 240V



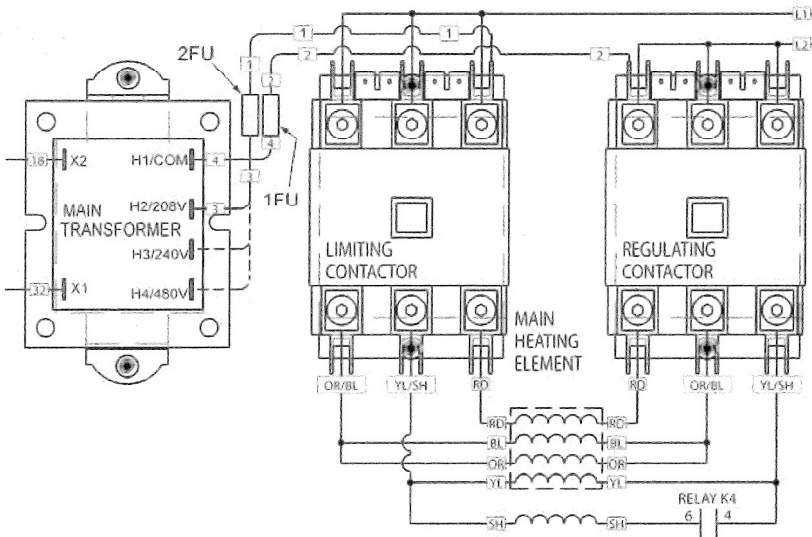
DERIVED FROM  
PRINT 858464-3  
A14408

C24ET6 / 10 Wiring Diagram (Sheet 4)

UPPER COMPARTMENT



LOWER COMPARTMENT



208 1 PHASE  
PROFESSIONAL

FIELD CONVERSION NOTES:

- 1) FOR 240V MACHINES, DISCONNECT AND CAP THE ORANGE WIRES OF THE MAIN HEATING ELEMENT AND CHANGE WIRE #3 TO THE CORRESPONDING VOLTAGE TAP (H3/240V) ON THE TRANSFORMER
- 2) FOR PLUS MACHINES, THERE IS NO SUPERHEATER

858764-1  
REV. A1

33580