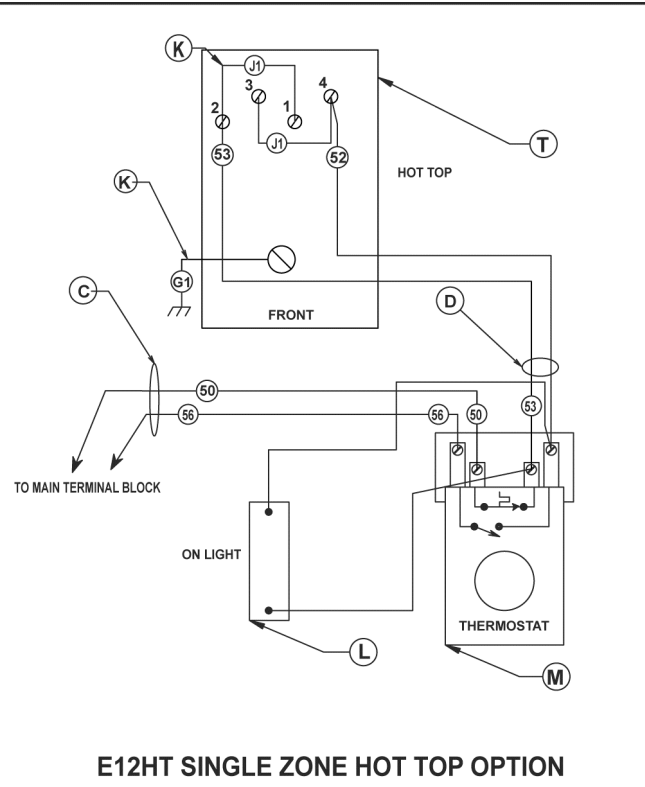
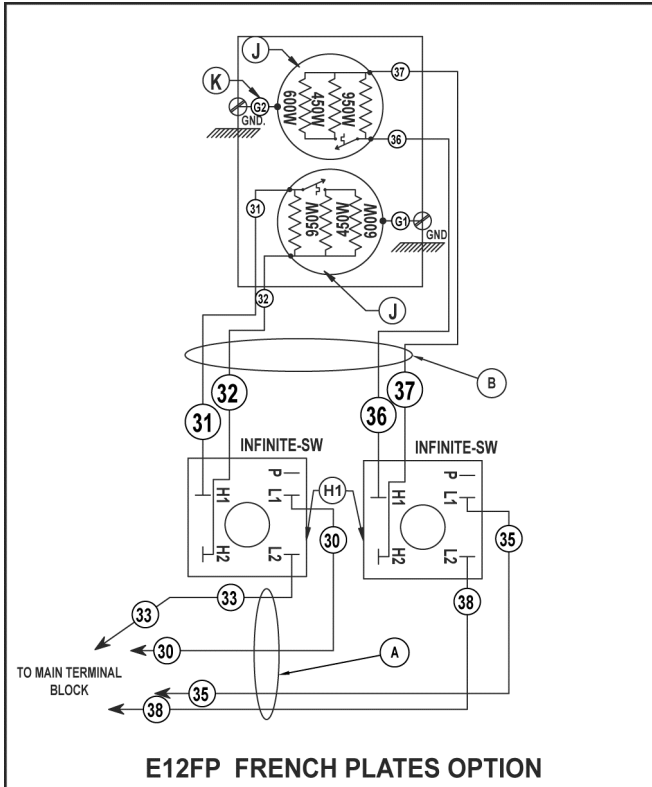


WIRING DIAGRAMS

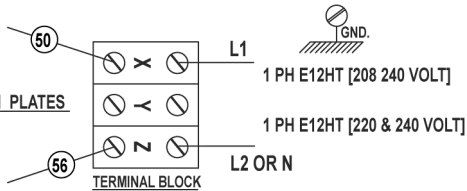
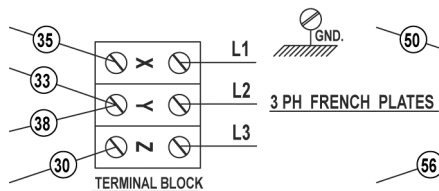
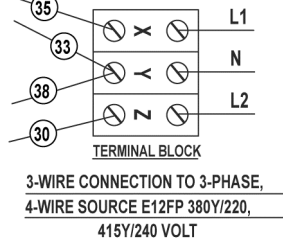
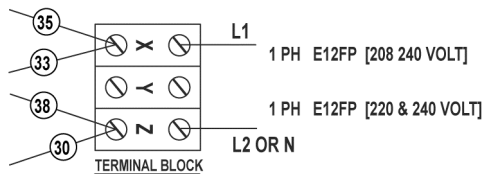
EV12 RANGE TOP - 208V & 240V



UNIT	TOTAL KW CONN.	LOAD KW PER PHASE 3-PHASE			
		L1-L2	L2-L3	L1-L3	
E12HT	5	--	--	--	
E12FP	4	2.0	2.0	--	
NOMINAL AMPS PER LINE					
3-PHASE					
		208V	240V	208	240
X	Y	Z	X	Y	Z
E12HT	-	-	-	-	-
E12FP	9.6	17	9.6	8.3	14
1-PH					
X	Y	Z	X-Z	X-Z	X-Z
E12HT	-	-	-	24	21
E12FP	9.6	17	9.6	8.3	19

UNIT	TOTAL KW CONN.		LOAD KW/PHASE			
	380Y/220	415Y/240	L1-N	L2-N		
E12HT	4.2	5	5.0	--		
E12FP	3.4	4	2.0	2.0		
NOMINAL AMPS PER LINE						
3-WIRE						
		220	415Y/240	240		
L1	L2	L1	L1	L2	L1	
E12HT	-	-	19.3	-	-	21
E12FP	7.8	7.8	15.6	8.5	8.5	17

REQ	REQ.	IT.	DESCRIPTION	FIN.
-	-	R	RESISTOR 300K OHM	-
-	-	T	ELEMENT HOT TOP 5KW	-
-	1	T	ELEMENT HOT TOP 5KW	-
-	1	M	THERMOSTAT, HOT TOP	-
-	1	L	LIGHT, INDICATOR	-
-	2	K1	WIRE ASSEMBLY [J1]	-
2	1	K	WIRE ASSEMBLY [G1]	-
-	-	J	FRENCH PLATE EGO 2KW	-
2	-	J	FRENCH PLATE EGO 2KW	-
2	-	H1	SWITCH, INFINITE	-
-	-	H	SWITCH, 3 HEAT	-
-	1	D	HARNESS, GRIDDLE ELEMENT	-
-	1	C	GRIDDLE SUPPLY HARNESS	-
-	-	B1	FRENCH PLATE SUPPLY HARNESS	-
1	-	B	FRENCH PLATE SUPPLY HARNESS	-
1	-	A	FRENCH PLATE SUPPLY HARNESS	-

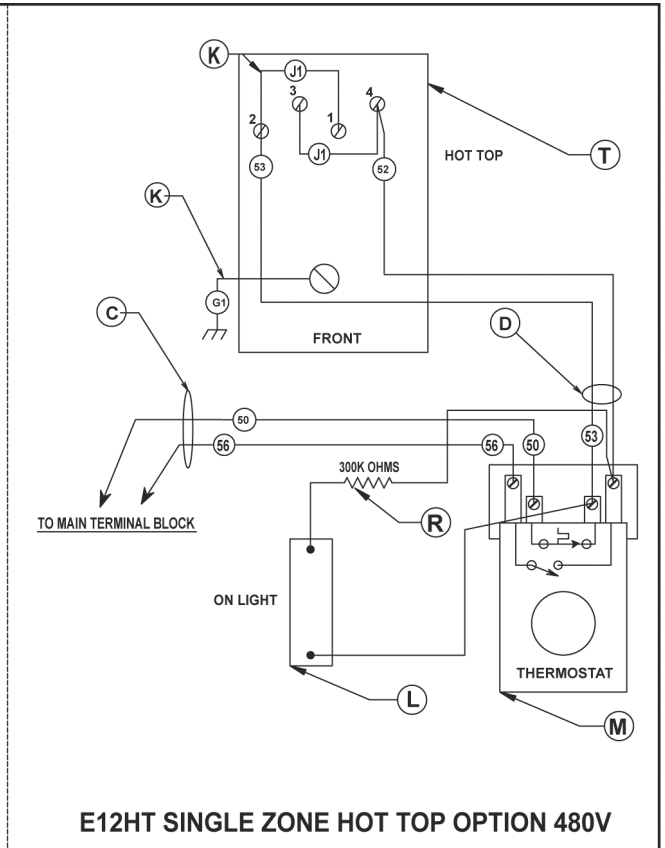
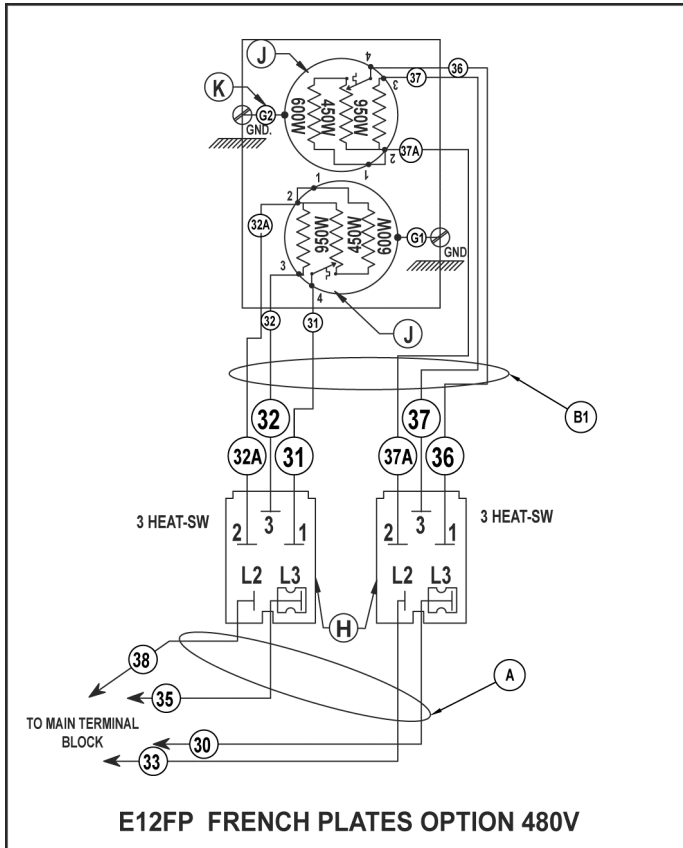


DERIVED FROM: 00-927439 REV C-01

REQ	REQ.	IT.	DESCRIPTION	FIN.
E12FP 208 240 VOLT			EV12 - 208V, 240V TOP CONFIGURATION RANGE	
E12HT 208 240 VOLT				

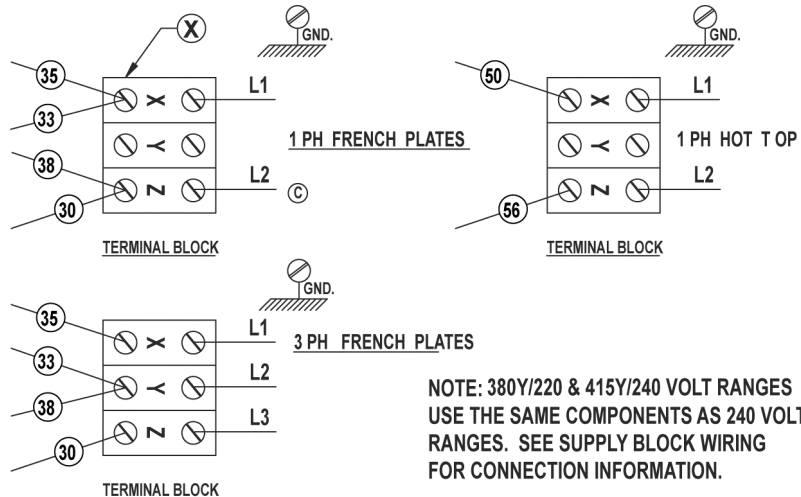
AI4007

EV12 RANGE TOP - 480V



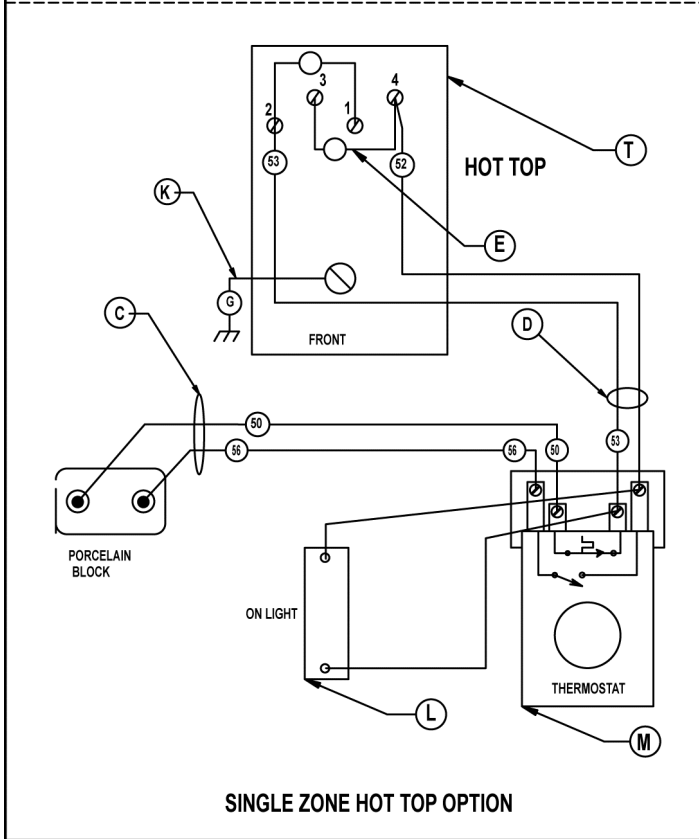
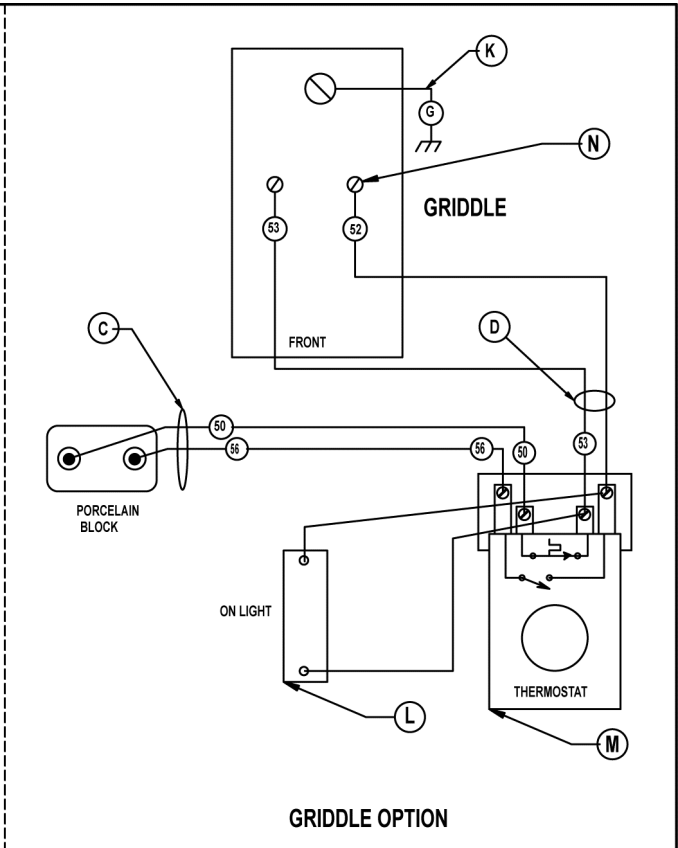
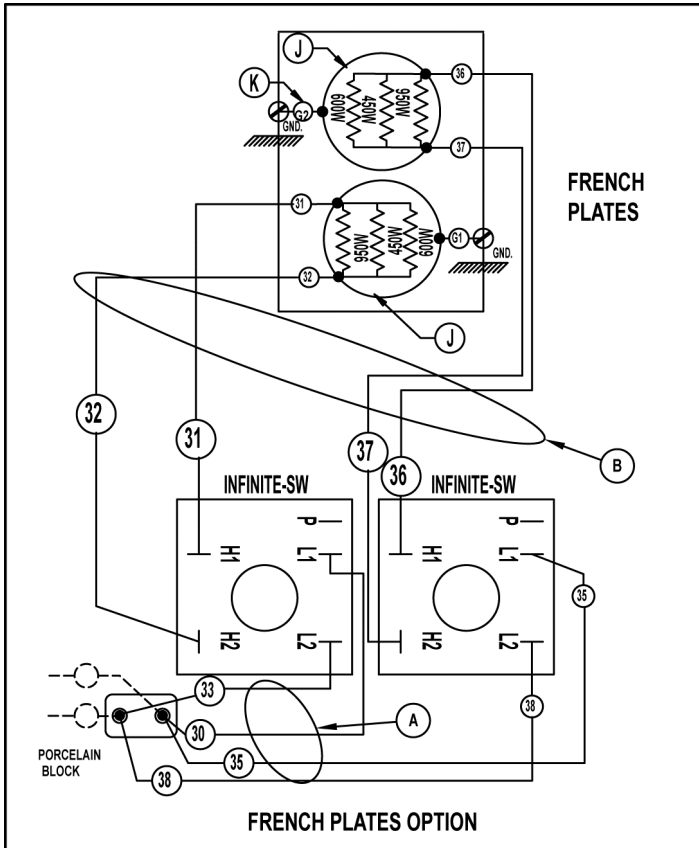
UNIT	TOTAL KW CONN.	LOAD KW PER PHASE 3-PHASE		
		X-Y	Y-Z	Z-X
E12HT	5	--	--	--
E12FP	4	2.0	2.0	--
NOMINAL AMPS PER LINE				
3-PHASE 480V				
1-PH 480				
	X	Y	Z	X-Z
E12HT	-	-	-	10.4
E12FP	4.2	7.2	4.2	8.3

REQ	REQ	IT.	DESCRIPTION	FIN.
-	1	R	RESISTOR 300K OHM	-
-	1	T	ELEMENT HOTTOP 5KW 480 VOLT	-
-	1	M	THERMOSTAT, HOT TOP	-
-	1	L	LIGHT, INDICATOR	-
-	2	K1	WIRE ASSEMBLY [J1]	-
2	1	K	WIRE ASSEMBLY [G1]	-
2	-	J	FRENCH PLATE EGO 2KW 480 VOLT	-
-	-	H1	SWITCH, INFINITE	-
2	-	H	SWITCH, 3 HEAT	-
-	1	D	HARNES, GRIDDLE ELEMENT	-
-	1	C	GRIDDLE SUPPLY HARNES	-
1	-	B1	FRENCH PLATE SUPPLY HARNES	-
-	-	B	FRENCH PLATE SUPPLY HARNES	-
1	-	A	FRENCH PLATE SUPPLY HARNES	-
REQ	REQ	IT.	DESCRIPTION	FIN.
E12FP 480 VOLT	E12HT 480 VOLT		EV12 - 480V TOP CONFIGURATION RANGE	AI4008



DERIVED FROM: 00-927439 REV C-01

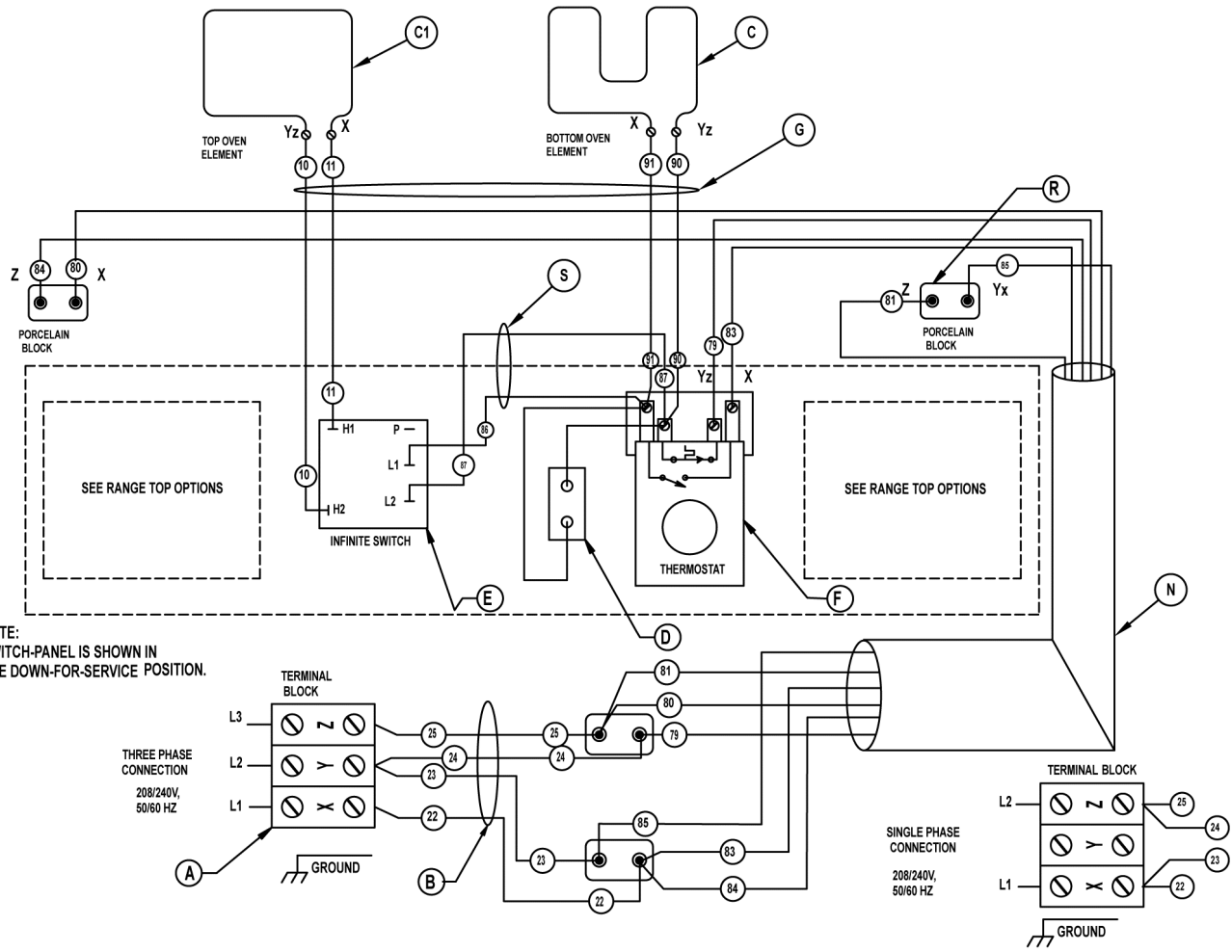
EV24 RANGE TOPS - 208V & 240V



REQ HOT TOP	REQ GRD	REQ FRP	RANGE TOP CONFIGURATIONS	
1	-	-	N	ELEMENT, GRIDDLE 208 VOLT 240 VOLT
1	1	-	M	THERMOSTAT, GRIDDLE & HOT TOP
1	1	-	L	LIGHT, INDICATOR
1	1	2	K	WIRE ASSEMBLY [G]
-	-	2	J	FRENCH PLATE 2.0KW 208 VOLT 240 VOLT
-	-	2	H	SWITCH, INFINITE
-	2	-	E	WIRE ASSEMBLY [J1]
1	1	-	D	HARNES, GRIDDLE ELEMENT
1	1	-	C	HARNES, GRIDDLE
-	-	1	B	FRENCH PLATE HARNES
-	-	1	A	FRENCH PLATE SUPPLY HARNES

DERIVED FROM: 00-927530 REV F-1
 EV & EH 24" RANGE TOPS
 208, 240 VOLTS
AI4009

EV24 STANDARD OVEN - 208V & 240V

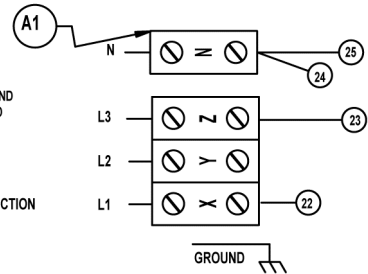


NOTE:
SWITCH-PANEL IS SHOWN IN
THE DOWN-FOR-SERVICE POSITION.

1	S	WIRES, TOP ELEM PWR	-
4	R	PORCELIAN BLOCK ASSEMBLY	-
1	N	HARNESS MAIN (80 RIGHT)	-
1	H	HARNESS MAIN (80 LT)	-
2	G	HARNESS OVEN ELEMENT	-
2	F	THERMOSTAT OVEN [SJ]	-
2	E	SWITCH INFINITE	-
2	D	LIGHT INDICATOR ASSEMBLY "OVEN"	-
2	C1	ELEMENT TOP 1.25KW	208 VOLT 240 VOLT
2	C	ELEMENT BOTTOM 3.75KW	208 VOLT 240 VOLT
1	B1	HARNESS POWER [86]	-
1	B	HARNESS POWER [24]	-
-	A1	TERMINAL BLOCK 1 POLE 220/380	-
2	A	TERMINAL BLOCK 3 POLE	-
REQ.	IT.	DESCRIPTION	FIN.

VOLTAGE BETWEEN LINES AND
NEUTRAL MUST NOT EXCEED
240 VAC.

380/415 V, 3PH
50/60 Hz
WITH NEUTRAL
SUPPLY CONNECTION

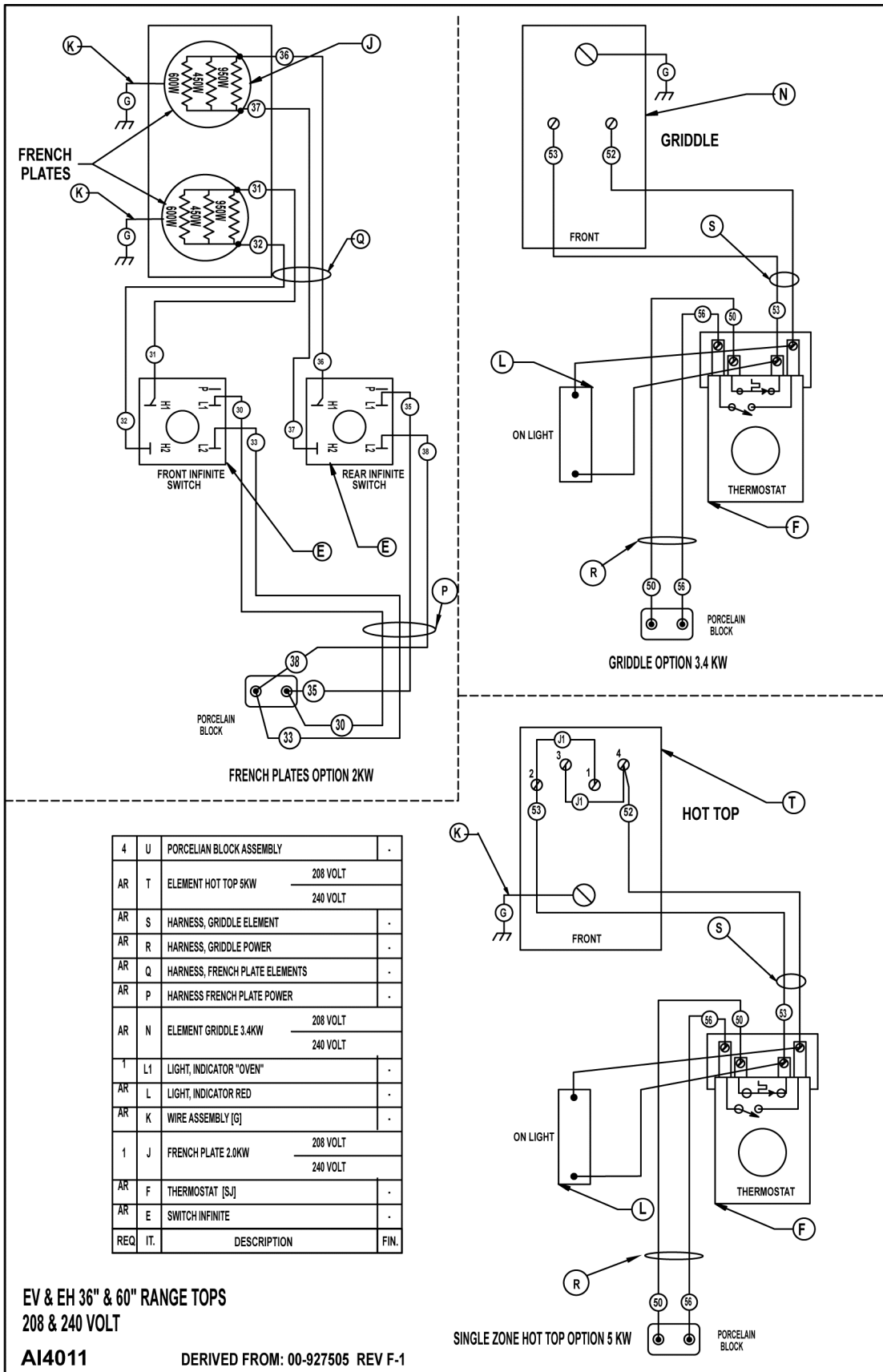


DERIVED FROM: 00-927530 REV F-1

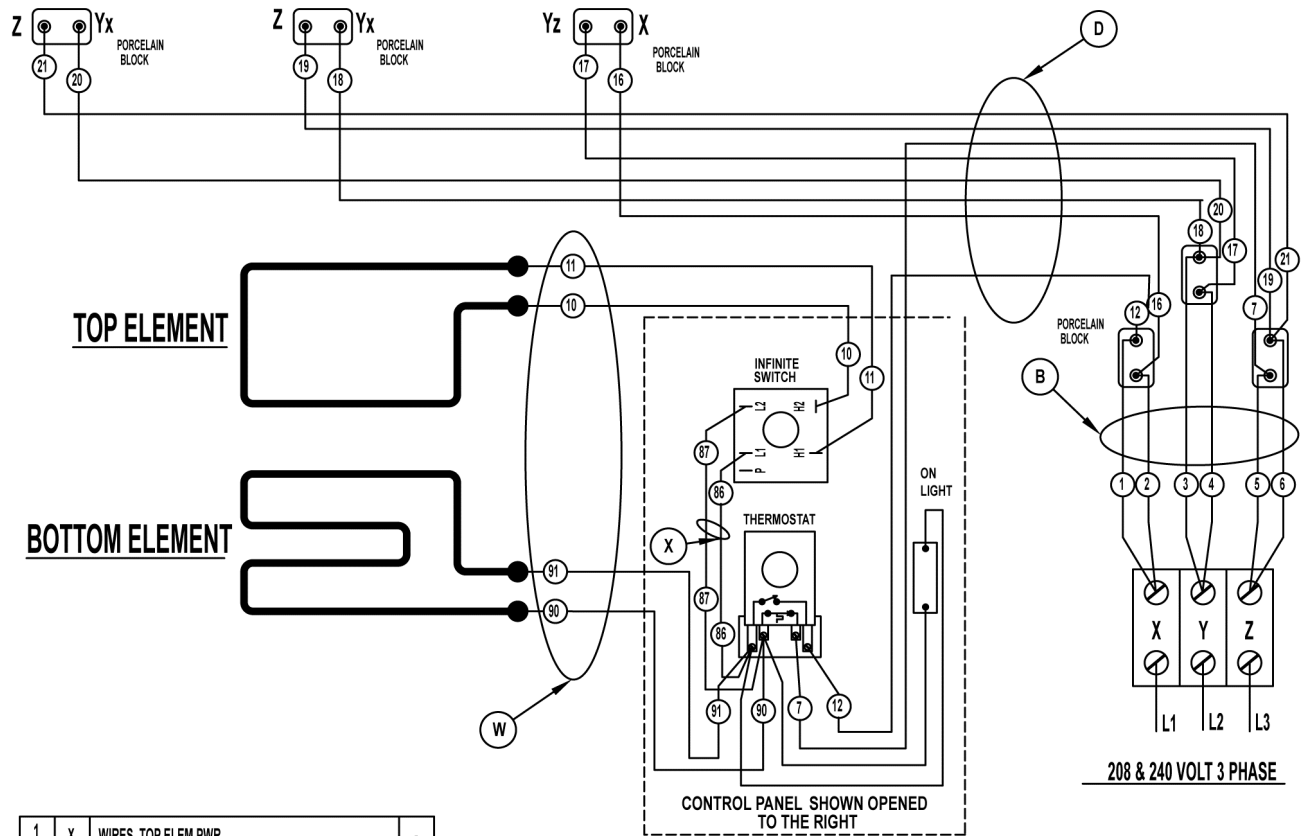
**EV & EH 24" RANGE
208, 240 VOLTS**

AI4010

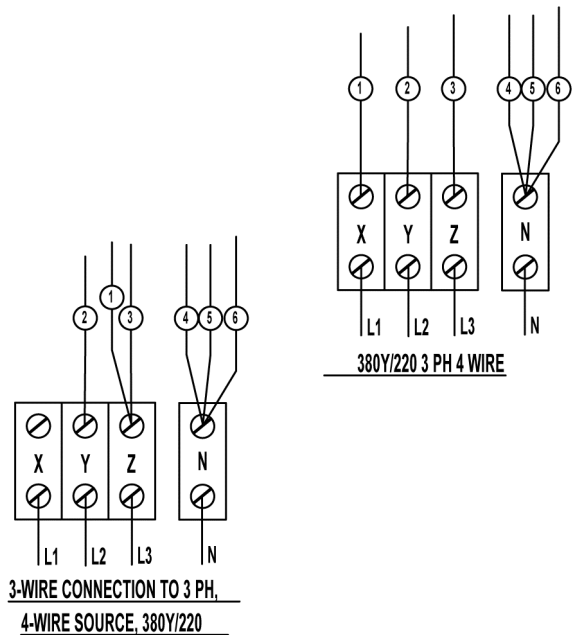
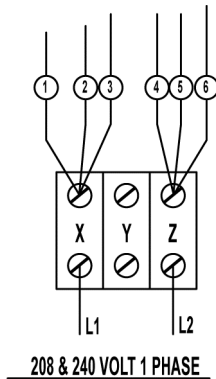
EV36 & EV60 RANGE TOPS - 208V & 240V



EV36 & EV60 STANDARD OVEN - 208V & 240V



1	X	WIRES, TOP ELEM PWR	-
1	C2	ELEMENT TOP 1.75 KW	208 VOLT
			240 VOLT
1	W	HARNESS OVEN ELEMENT	-
AR	V	WIRE ASSEMBLY [J1]	-
4	U	PORCELAIN BLOCK ASSEMBLY	-
1	L1	LIGHT, INDICATOR "OVEN"	-
AR	F	THERMOSTAT [SJ]	-
AR	E	SWITCH INFINITE	-
1	D	HARNESS MAIN	-
1	C1	ELEMENT BOT 3.75 KW	208 VOLT
			240 VOLT
1	B	HARNESS POWER	-
-	A1	TERMINAL BLOCK 1 POLE 220/380	-
1	A	TERMINAL BLOCK 3 POLE	-
REQ.	IT.	DESCRIPTION	FIN.

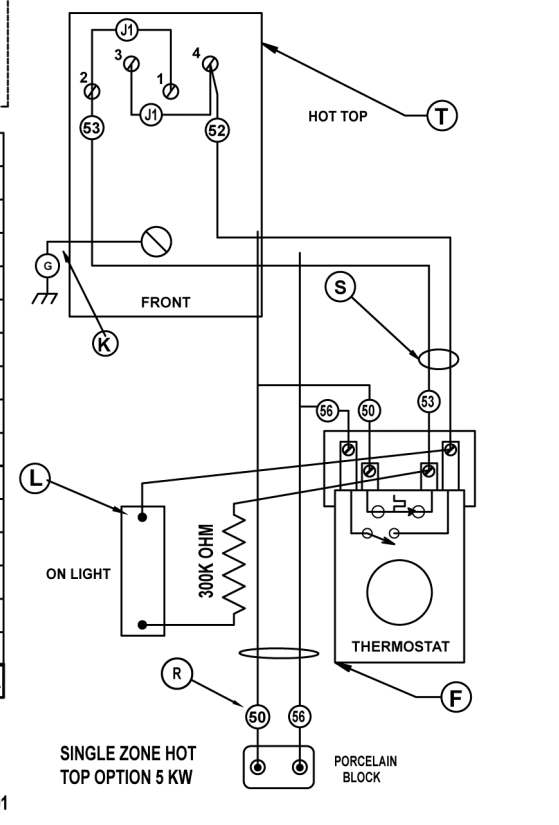
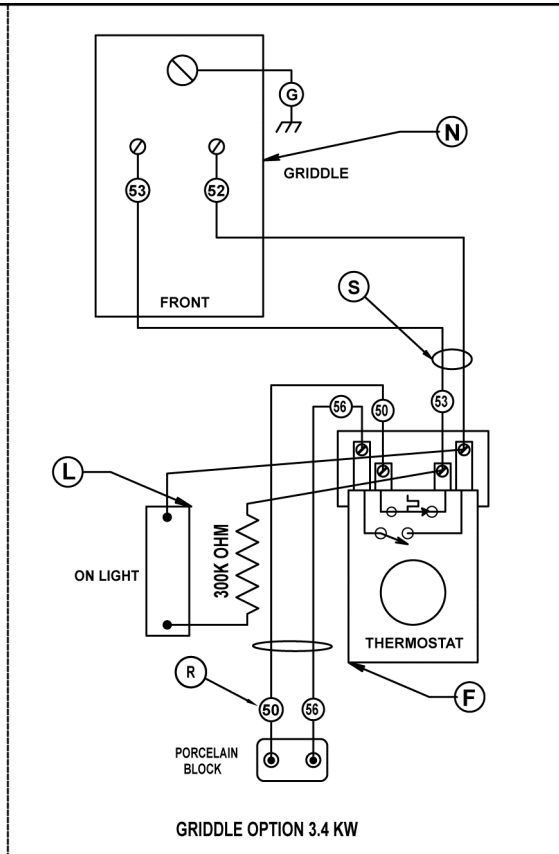
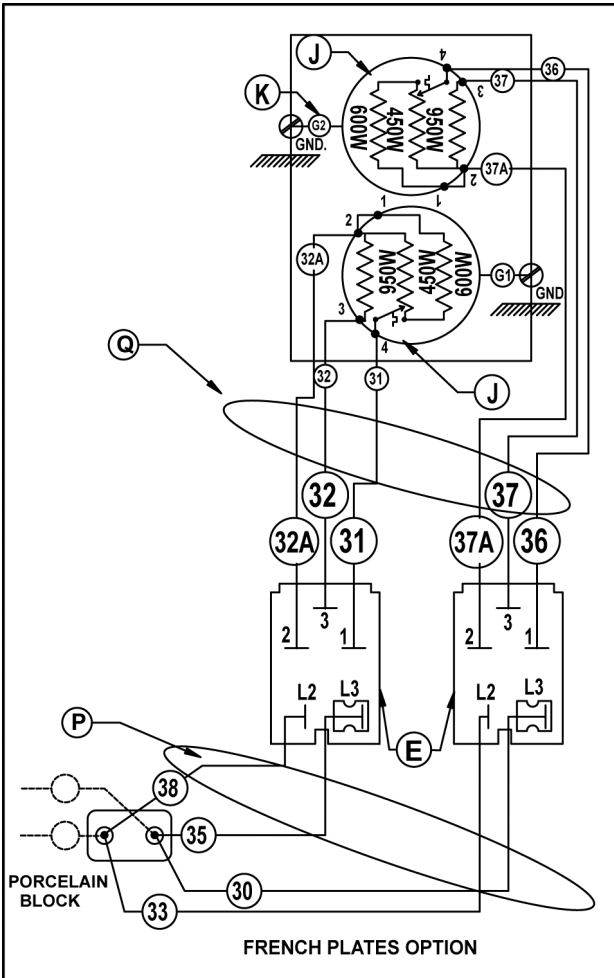


DERIVED FROM: 00-927505 REV F-1

EV & EH 36" & 60" RANGES
STANDARD OVEN
208 & 240 VOLT

AI4012

EV24 RANGE TOPS - 480V



AR	V	WIRE ASSEMBLY [J1]	-
4	U	PORCELIAN BLOCK ASSEMBLY	-
AR	T	ELEMENT HOT TOP 5KW	480 VOLT
AR	S	HARNES, GRIDDLE ELEMENT	-
AR	R	HARNES, GRIDDLE POWER	-
AR	Q	HARNES, FRENCH PLATE ELEMENTS	-
AR	P	HARNES FRENCH PLATE POWER	-
AR	N	ELEMENT GRIDDLE 3.4KW	480 VOLT
AR	L	LIGHT, INDICATOR RED	-
AR	K	WIRE ASSEMBLY [G]	-
1	J	FRENCH PLATE 2.0KW	480 VOLT
AR	F	THERMOSTAT [SJ]	-
AR	E	SWITCH 3 HEAT	-
REQ. IT.		DESCRIPTION	FIN.

EV & EH 24" OF 60" RANGES
RANGE TOPS
480 VOLT

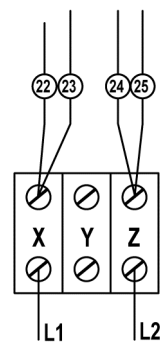
AI4013

DERIVED FROM: 00-927568 REV F-01

EV24 STANDARD OVEN - 480V



480 VOLT 3 PHASE



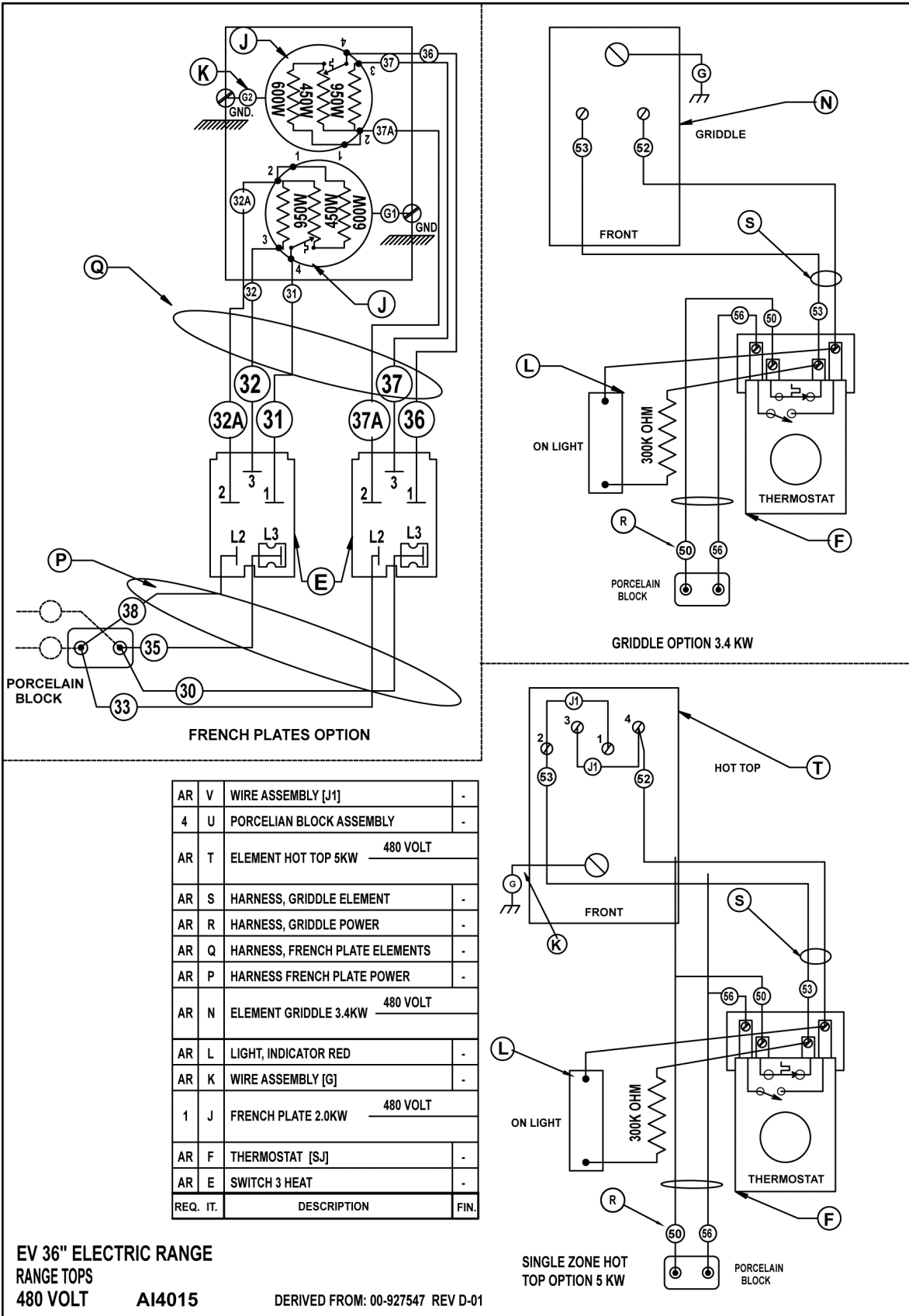
480 VOLT 1 PHASE

1	W	HARNESS OVEN ELEMENT	-
4	U	PORCELIAN BLOCK ASSEMBLY	-
1	L1	LIGHT, INDICATOR "OVEN"	-
AR	F	THERMOSTAT [SJ]	-
AR	E	SWITCH 3 HEAT	-
1	D	HARNESS MAIN [60 RIGHT]	-
1	C1	ELEMENT TOP 1.25KW 480 VOLT	
1	C	ELEMENT BOTTOM 3.75KW 480 VOLT	
1	B	HARNESS POWER 24	-
-	A1	TERMINAL BLOCK 1 POLE 220/380	-
1	A	TERMINAL BLOCK 3 POLE	-
REQ	IT.	DESCRIPTION	FIN.

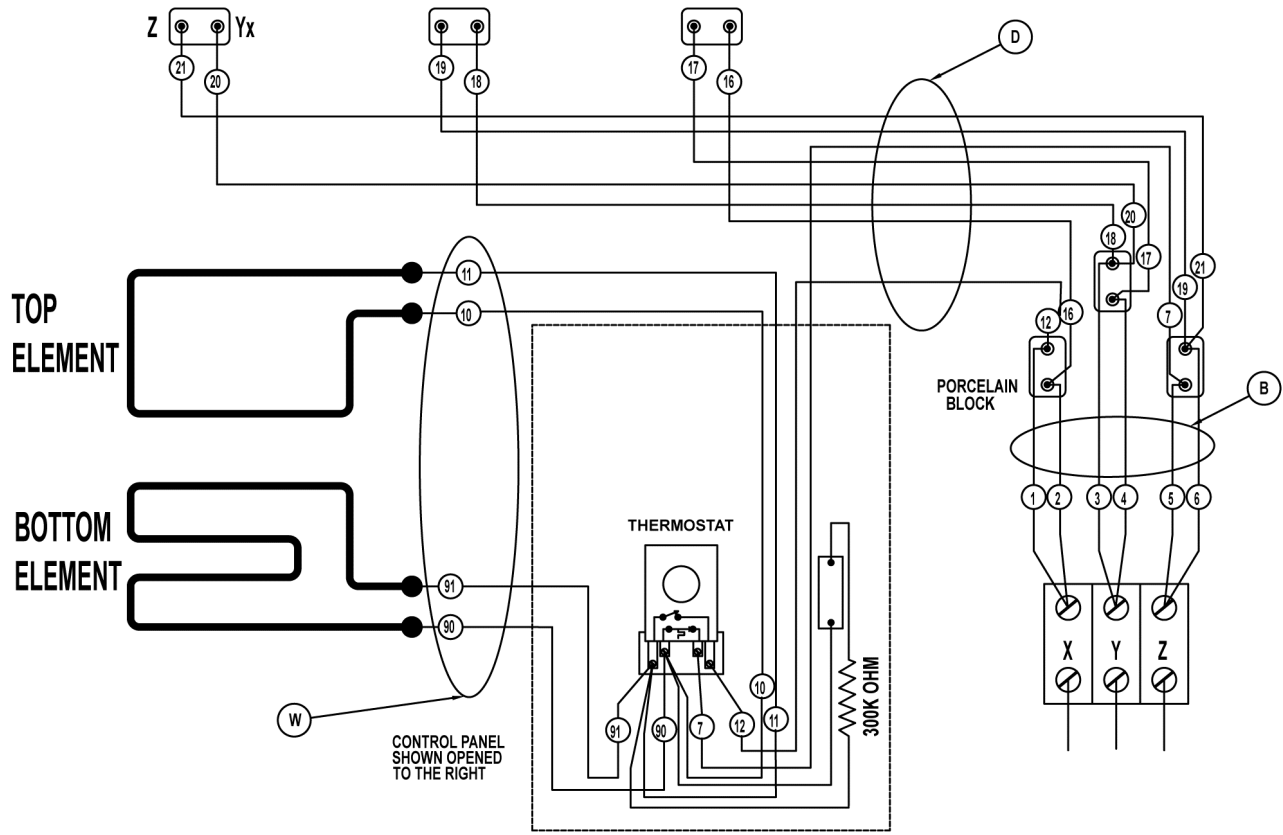
DERIVED FROM: 00-927568 REV F-01

**EV & EH 24" OF 60" RANGES
STANDARD OVEN
480 VOLT AI4014**

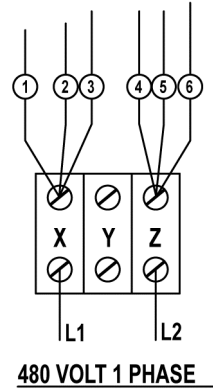
EV36 RANGE TOPS - 480V



EV36 STANDARD OVEN - 480V



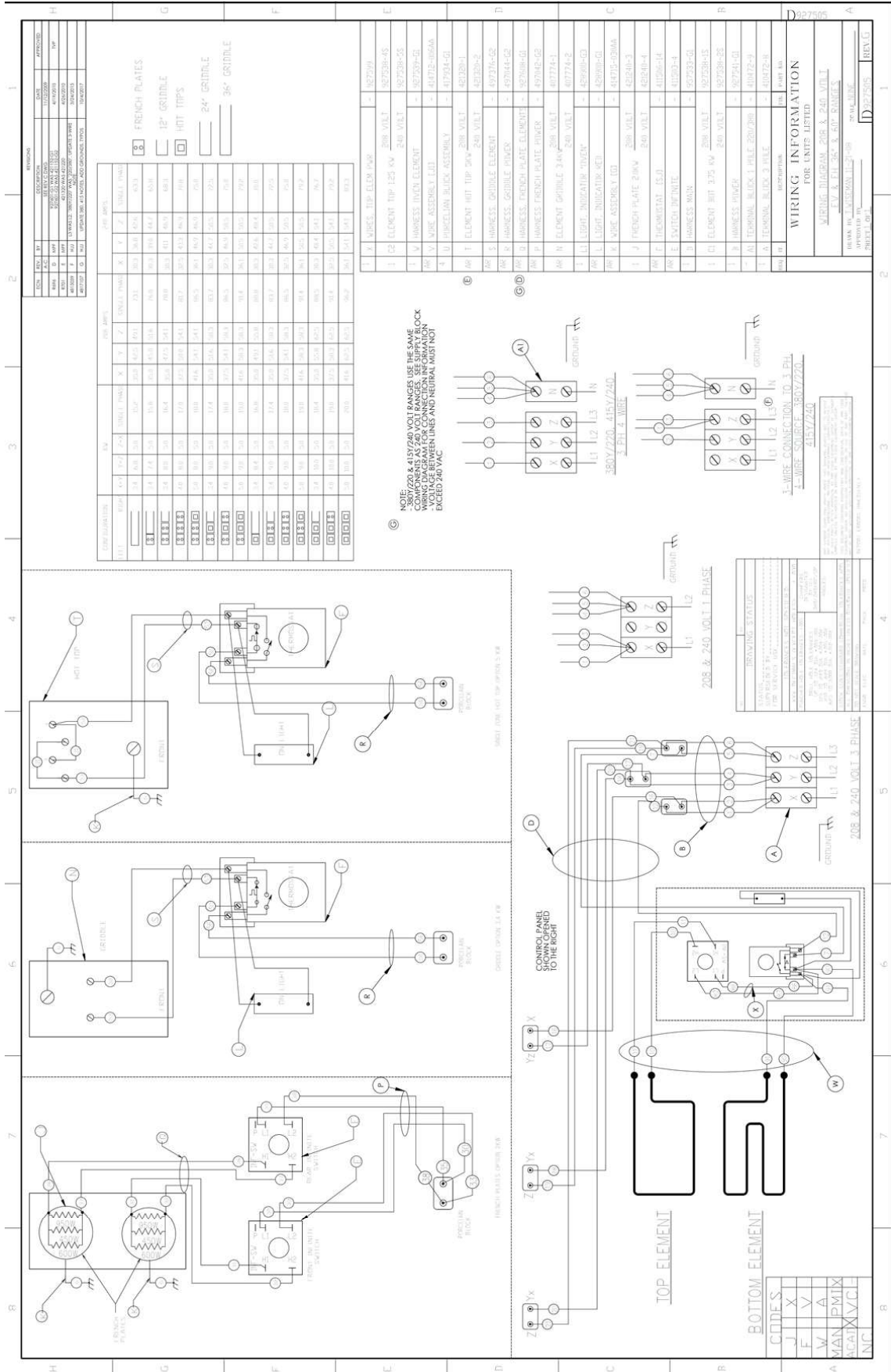
1	W	HARNESS OVEN ELEMENT	-
4	U	PORCELIAN BLOCK ASSEMBLY	-
1	L1	LIGHT, INDICATOR "OVEN"	-
AR	F	THERMOSTAT [SJ]	-
AR	E	SWITCH 3 HEAT	-
1	D	HARNESS MAIN [60 RIGHT]	-
1	C1	ELEMENT TOP 1.25KW 480 VOLT	-
1	C	ELEMENT BOTTOM 3.75KW 480 VOLT	-
1	B	HARNESS POWER 24	-
-	A1	TERMINAL BLOCK 1 POLE 220/380	-
1	A	TERMINAL BLOCK 3 POLE	-
REQ.	IT.	DESCRIPTION	FIN.

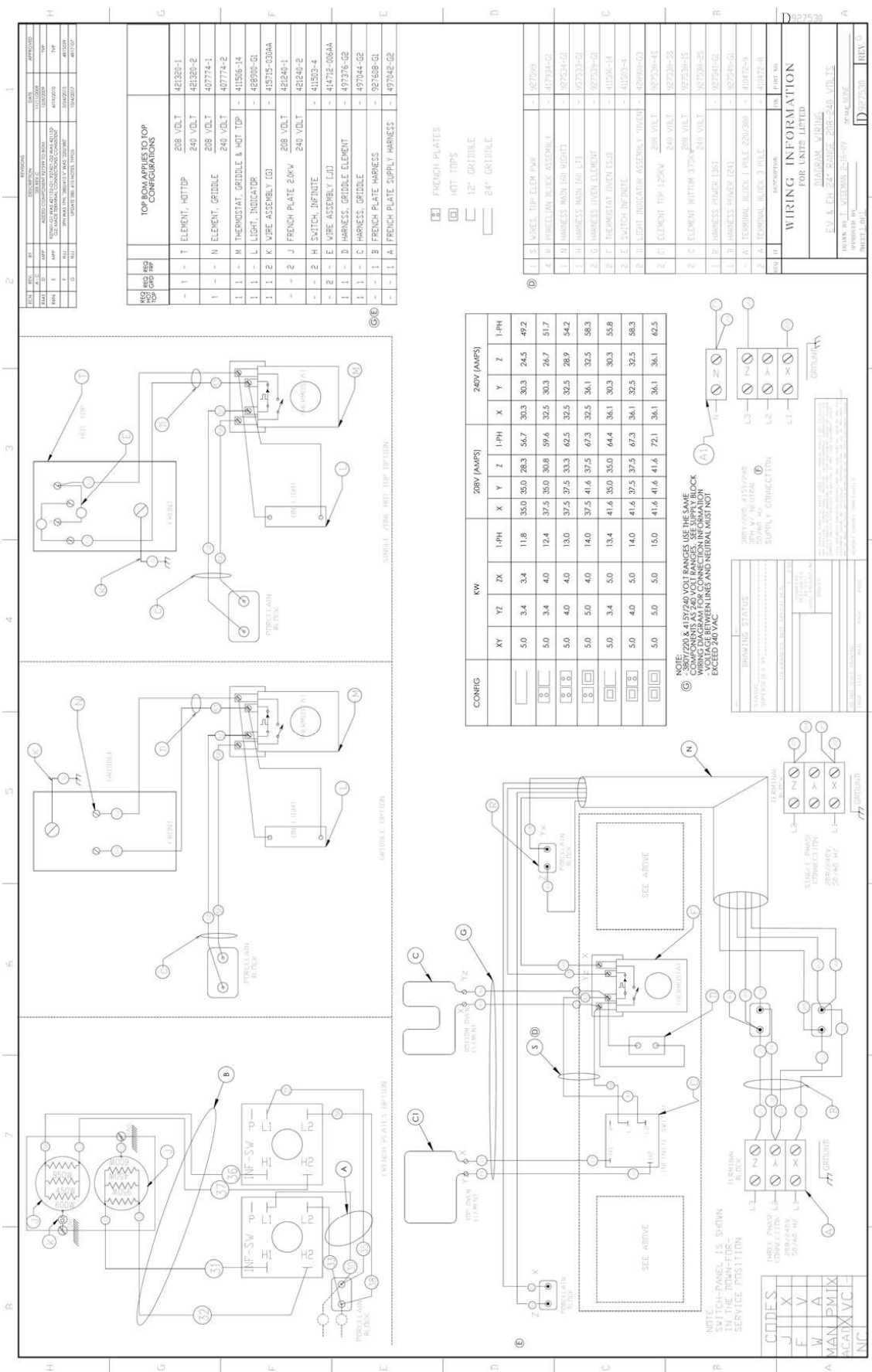


DERIVED FROM: 00-927547 REV D-01

**EV36 ELECTRIC RANGE
STANDARD OVEN
480V**

AI4016





NO.	WIRE	TO	FROM	WIRE	NO.
1	1	1	1	208 VOLT	42120-1
1	N	1	1	240 VOLT	42120-2
1	1	1	1	208 VOLT	40774-1
1	1	1	1	240 VOLT	40774-2
1	1	1	1	41586-14	
1	1	1	1	42890-10	
1	1	1	1	42890-11	
1	1	1	1	42890-12	
1	1	1	1	42890-13	
1	1	1	1	42890-14	
1	1	1	1	42890-15	
1	1	1	1	42890-16	
1	1	1	1	42890-17	
1	1	1	1	42890-18	
1	1	1	1	42890-19	
1	1	1	1	42890-20	
1	1	1	1	42890-21	
1	1	1	1	42890-22	
1	1	1	1	42890-23	
1	1	1	1	42890-24	
1	1	1	1	42890-25	
1	1	1	1	42890-26	
1	1	1	1	42890-27	
1	1	1	1	42890-28	
1	1	1	1	42890-29	
1	1	1	1	42890-30	
1	1	1	1	42890-31	
1	1	1	1	42890-32	
1	1	1	1	42890-33	
1	1	1	1	42890-34	
1	1	1	1	42890-35	
1	1	1	1	42890-36	
1	1	1	1	42890-37	
1	1	1	1	42890-38	
1	1	1	1	42890-39	
1	1	1	1	42890-40	
1	1	1	1	42890-41	
1	1	1	1	42890-42	
1	1	1	1	42890-43	
1	1	1	1	42890-44	
1	1	1	1	42890-45	
1	1	1	1	42890-46	
1	1	1	1	42890-47	
1	1	1	1	42890-48	
1	1	1	1	42890-49	
1	1	1	1	42890-50	

CONFIG	KW			280V (AMPS)			240V (AMPS)				
	XY	YZ	TX	1-PH	X	Y	Z	1-PH	X	Y	Z
1	5.0	3.4	3.4	11.8	35.0	35.0	28.3	5.67	30.3	30.3	24.5
2	5.0	3.4	4.0	12.4	37.5	35.0	30.8	59.6	32.5	30.3	26.7
3	5.0	4.0	4.0	13.0	37.5	37.5	33.3	62.5	32.5	32.5	28.9
4	5.0	5.0	4.0	14.0	37.5	41.6	37.5	67.3	32.5	36.1	32.5
5	5.0	3.4	5.0	13.4	41.6	35.0	35.0	64.4	36.1	30.3	35.8
6	5.0	4.0	5.0	14.0	41.6	37.5	37.5	67.3	36.1	32.5	32.5
7	5.0	5.0	5.0	15.0	41.6	41.6	41.6	72.1	36.1	36.1	36.1

NOTE: 208V/220V & 415V/240V RANGES USE THE SAME COMPONENTS AS 240V RANGES. SEE SUPPLY BLOCK CONNECTIONS FOR WIRING. VOLTAGE BETWEEN LINES AND NEUTRAL MUST NOT EXCEED 240VAC.

⑥ FRENCH PLATES
 ⑦ HOT TIPS
 ⑧ 12" GRIDDLE
 ⑨ 24" GRIDDLE

WIRING INFORMATION FOR UNITS LISTED

DIAGRAM NUMBER: EV & E11 24-RANGE 208-241-VOLTS APPROVED FOR: [Signature]

