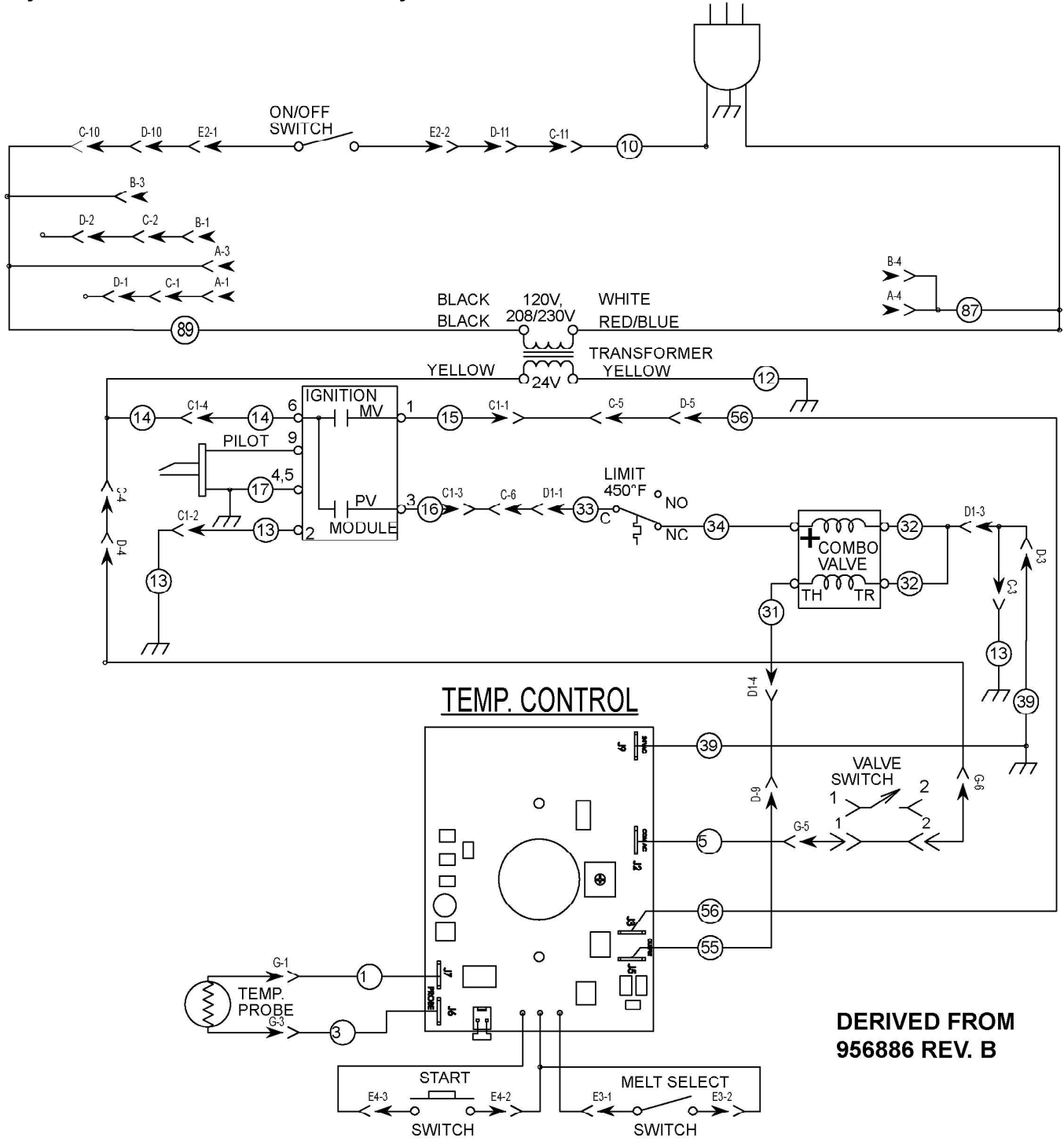


SCHEMATIC DIAGRAMS

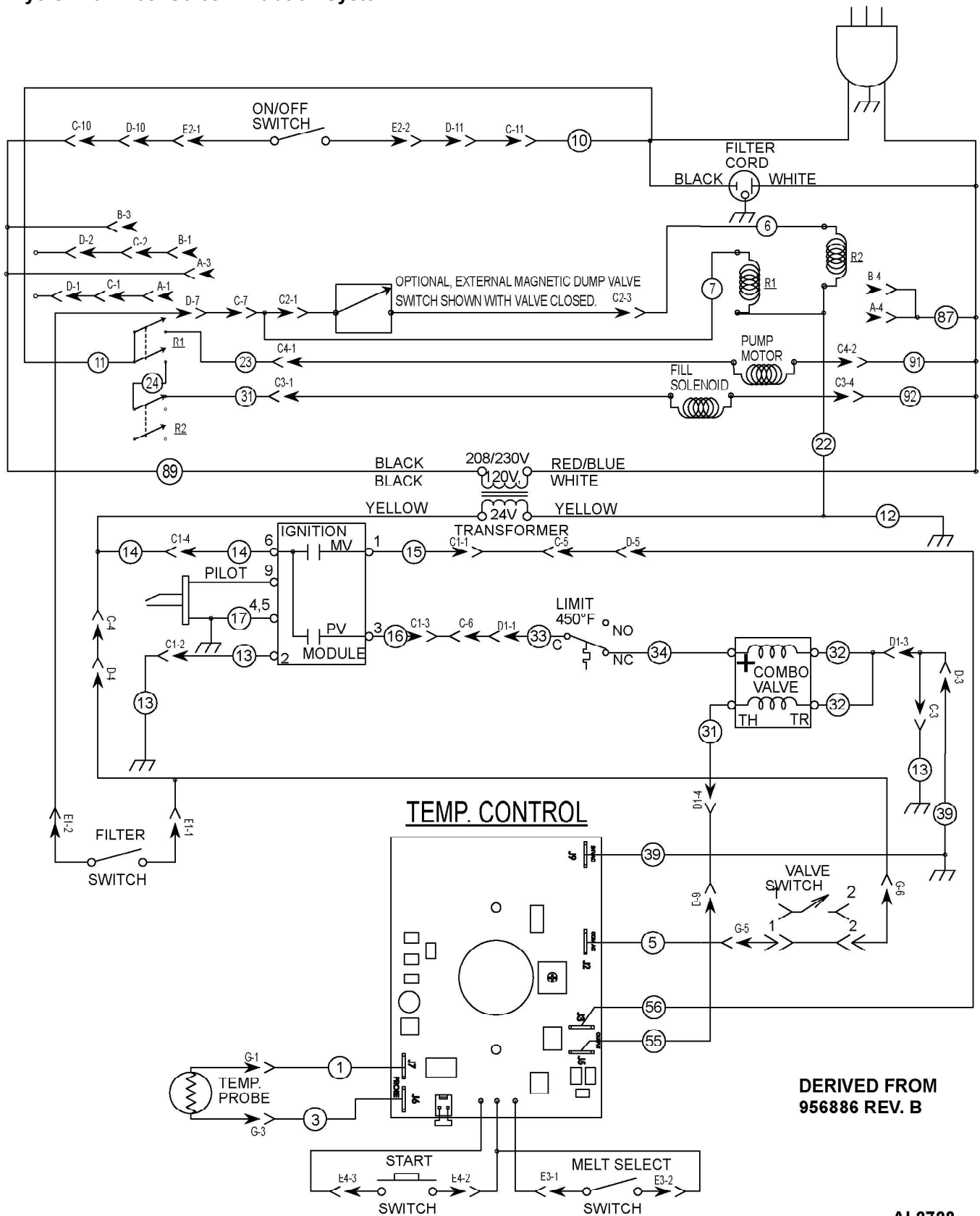
Fryers Without KleenScreen Filtration System

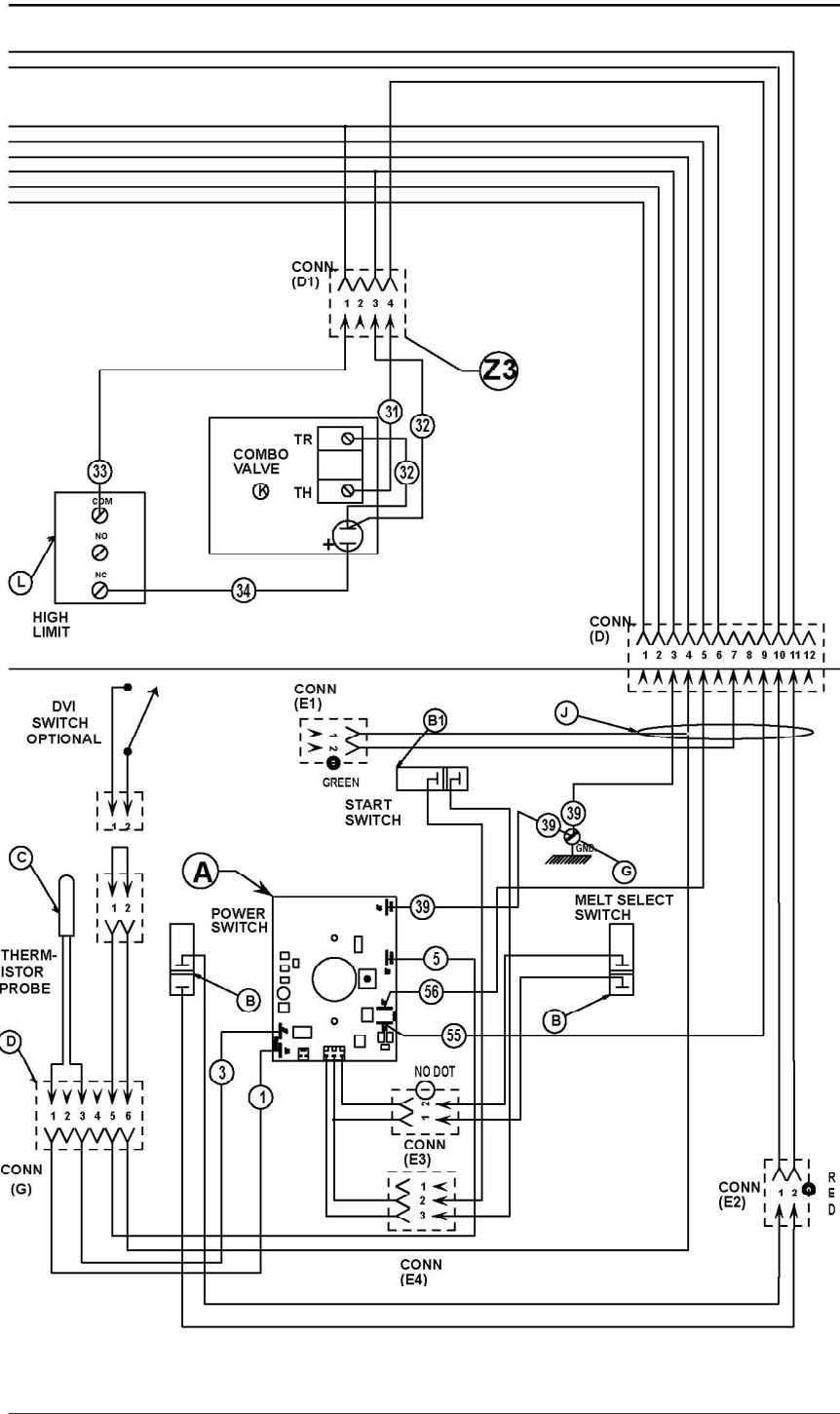


**DERIVED FROM
956886 REV. B**

AI 2727

Fryers With KleenScreen Filtration System

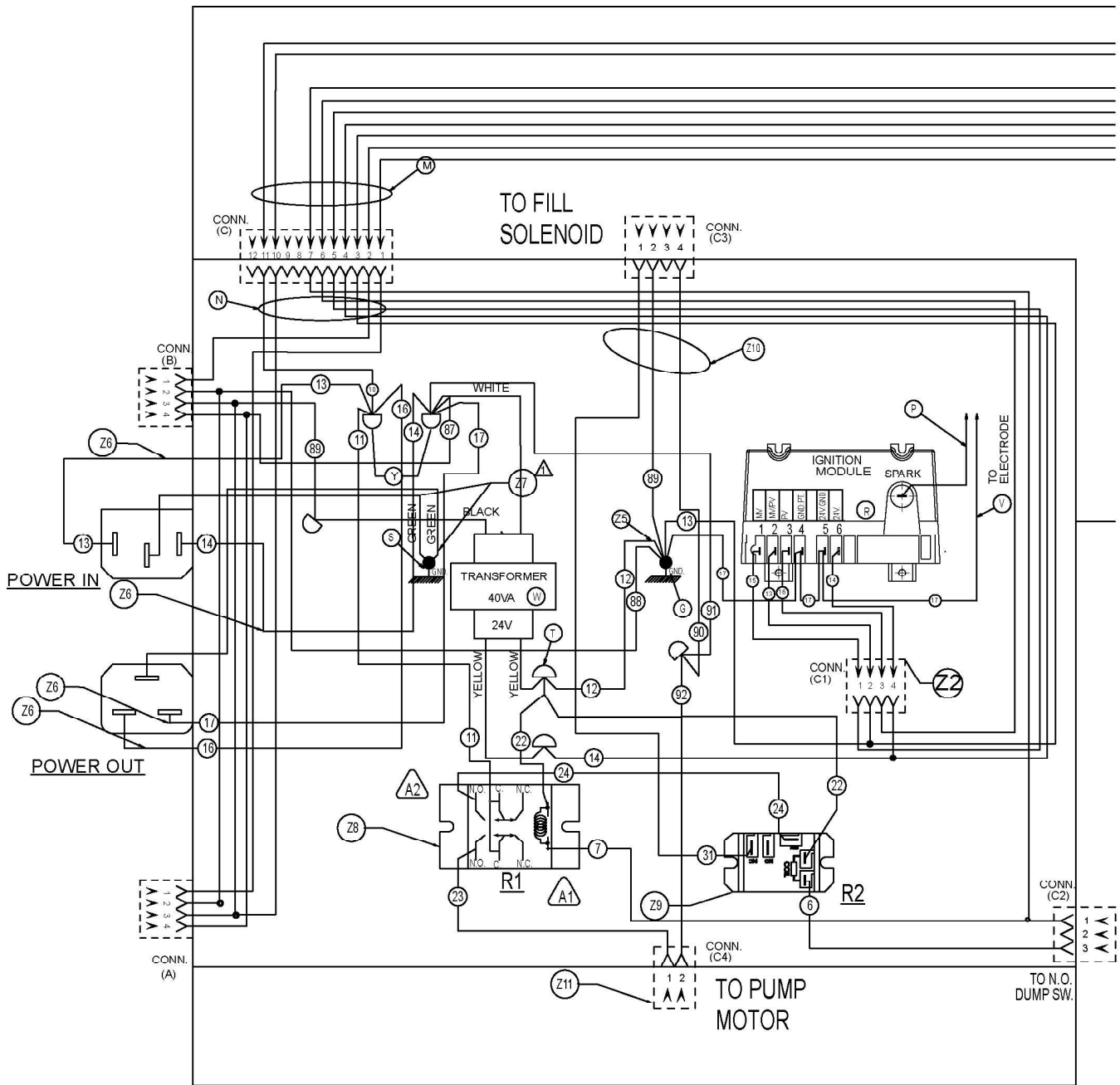




2	Z7	WIRE ASSEMBLY (GREEN)	-
4	Z6	WIRE ASSEMBLY [13,14,16,17]	-
1	Z5	WIRE ASSEMBLY [12]	-
1	Z3	MANIFOLD HARNESS	-
1	Z2	HARNESS-IGNITION MODULE	-
1	Z1	OPTIONAL FILTER SUPPLY CORD	-
2	Y	WIRE NUT YELLOW	-
1	W	24V 40VA TRANSFORMER	120 VOLT 240 VOLT
1	V	LEAD ASSEMBLY [17]	-
3	T	WIRE NUT	-
1	S	GROUND LUG	-
1	R	IGNITION MODULE	-
1	P	IGNITOR CABLE	-
1	N	POWER HARNESS	-
1	M	MAIN HARNESS	-
1	L	HI-LIMIT	-
1	K	COMBO VALVE	NAT LP
1	J	INTERFACE HARNESS	-
2	G	TERMINAL, STATIONARY	-
1	D	D.V.I. HARNESS ASSEMBLY	-
1	C	THERMISTOR	-
1	B1	ROCKER SWITCH ASSEMBLY-MOM.	-
2	B	ROCKER SWITCH ASSEMBLY	-
1	A	NCC CONTROL	-

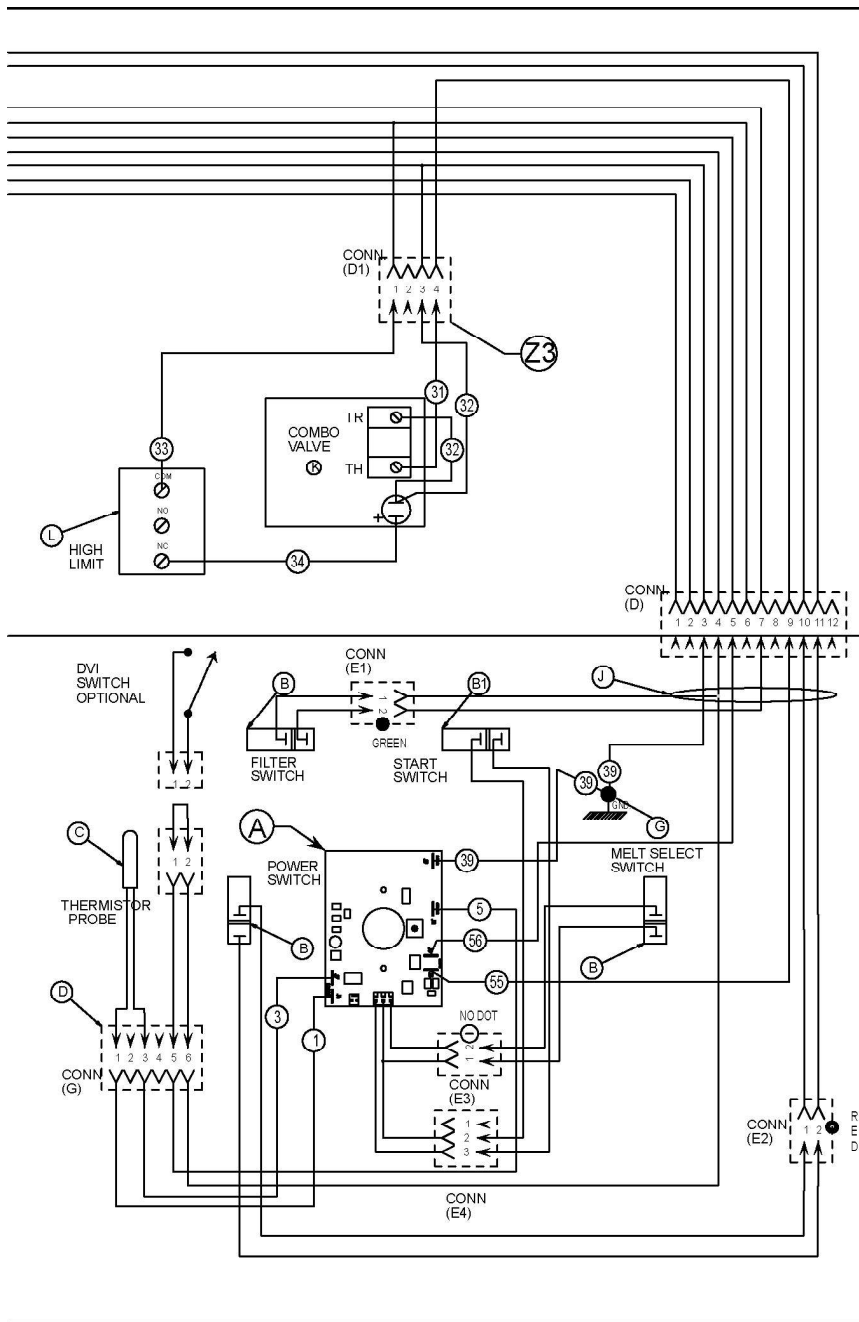
DERIVED FROM
956751-1 REV. B

Fryers With KleenScreen Filtration System



PAGE 1 OF 2
(SEE AI 2732)

AI 2729



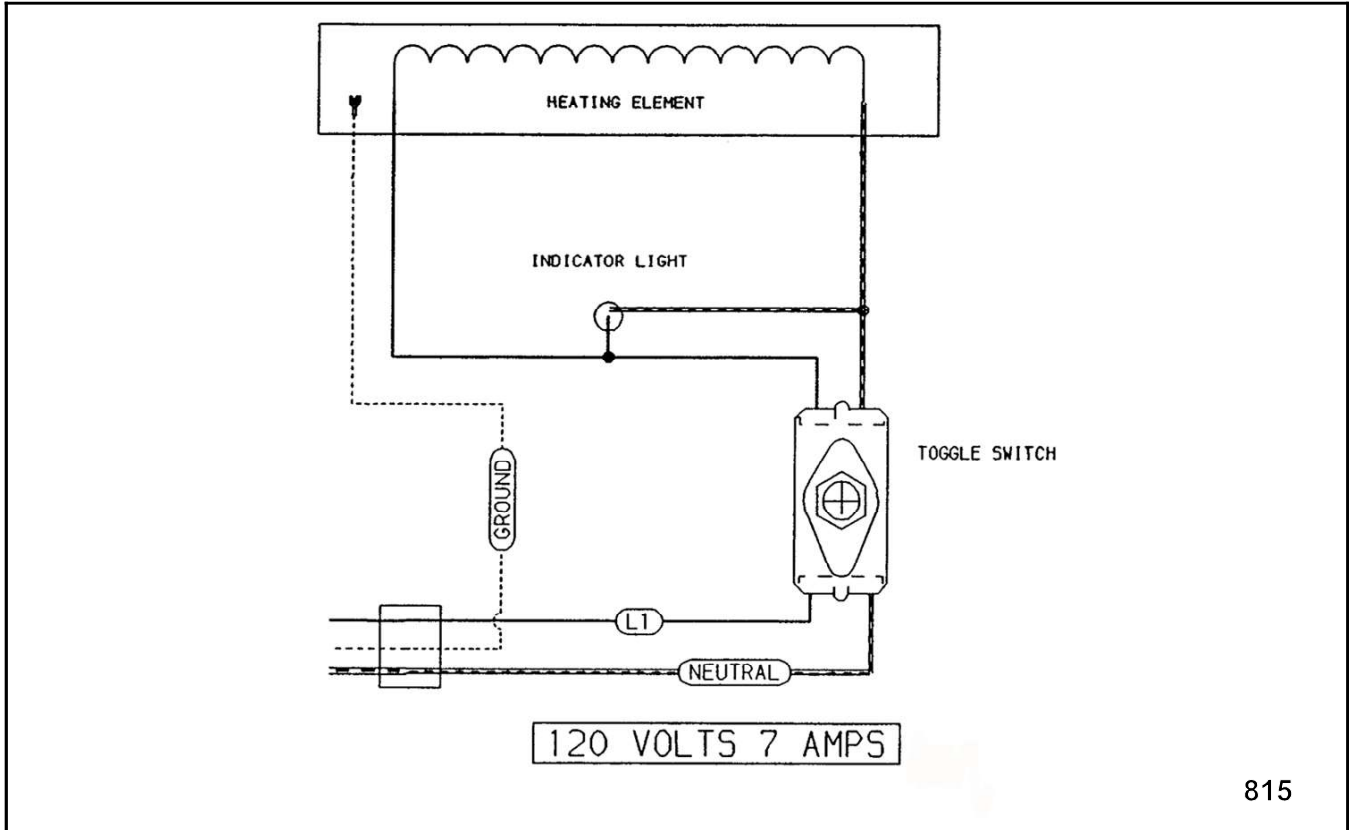
1	Z11	HARNES, MOTOR CONNECT	
1	Z10	HARNES, SOLENOID CONNECT	
1	Z9	RELAY SPST 24 VAC COIL	
1	Z8	RELAY 1 HP 120 VOLT	
2	Z7	WIRE ASSEMBLY (GREEN)	
4	Z6	WIRE ASSEMBLY [13,14,16,17]	
1	Z5	WIRE ASSEMBLY [12]	
1	Z3	MANIFOLD HARNES	
1	Z2	HARNES-IGNITION MODULE	
1	Z1	OPTIONAL FILTER SUPPLY CORD	
2	Y	WIRE NUT YELLOW	
1	W	24V 40VA TRANSFORMER	120 VOLT
			240 VOLT
1	V	LEAD ASSEMBLY [17]	
3	T	WIRE NUT	
1	S	GROUND LUG	
1	R	IGNITION MODULE	
1	P	IGNITOR CABLE	
1	N	POWER HARNES	
1	M	MAIN HARNES	
1	L	HI-LIMIT	
1	K	COMBO VALVE	NAT
			LP
1	J	INTERFACE HARNES	
2	G	TERMINAL, STATIONARY	
1	D	D.V.I. HARNES ASSEMBLY	
1	C	THERMISTOR	
1	B1	ROCKER SWITCH ASSEMBLY-MOM.	
3	B	ROCKER SWITCH ASSEMBLY	
1	A	NCC CONTROL	

DERIVED FROM
956751-2 REV. B

PAGE 2 OF 2
(SEE AI 2729)

AI 2732

Frymate (Dump Station)



815