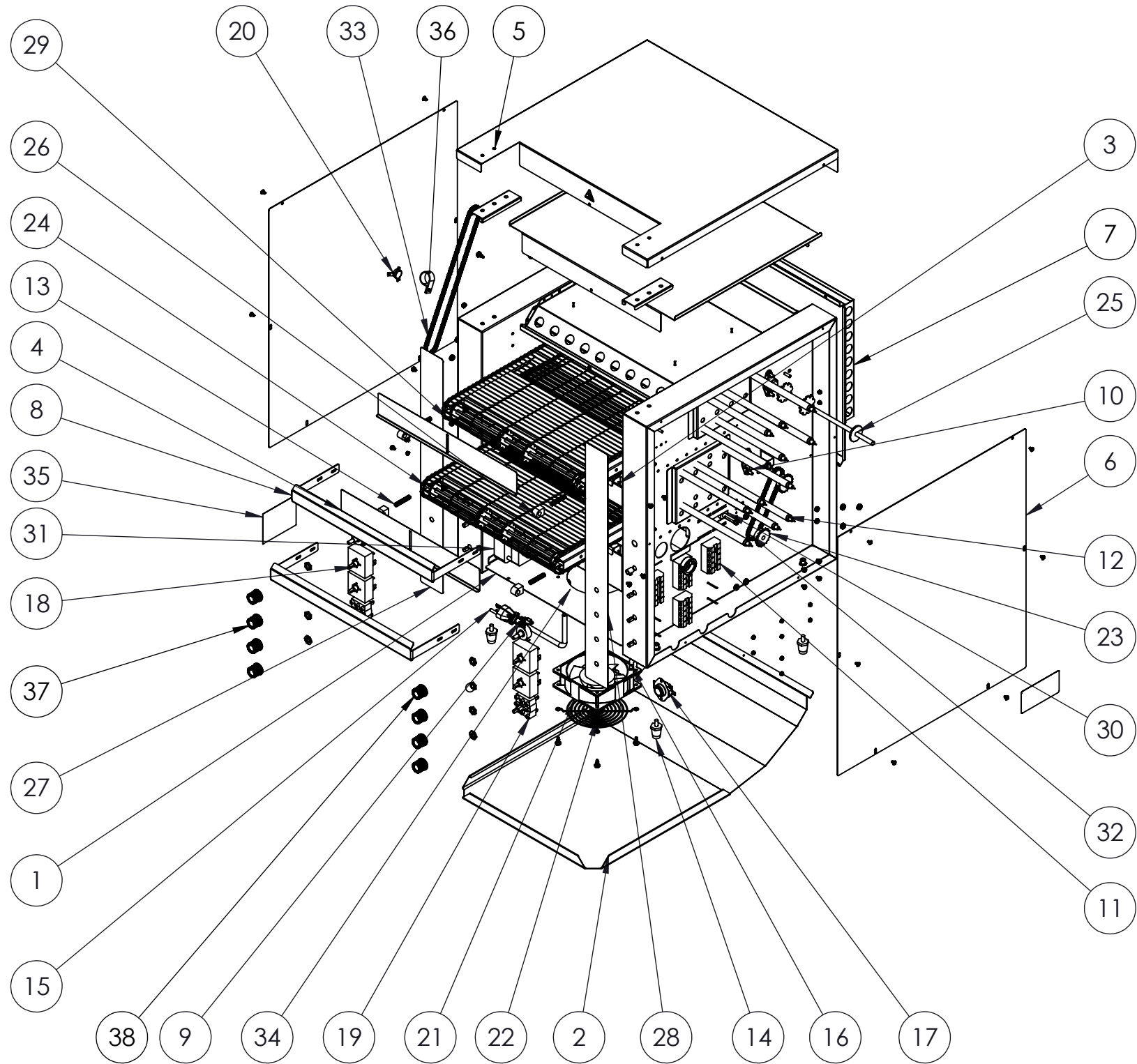




DUAL CONVEYOR TOASTER - 208V



ITEM NO.	PART NUMBER	DESCRIPTION	QTY.
1	B300005	CT4 18" CONTROL BOX COVER	1
2	B300013	CT4 18" TOAST CHUTE	1
3	B205129	SO2 14.5" CRUMB TRAY ASSM	2
4	B300059	CT4H 18" HEAT SHUTTER	2
5	B300233	CT4-DUAL TOP COVER	1
6	B300230	CT4-DUAL SIDE PANEL	2
7	B205153	CT4 DUAL BACK PANEL	1
8	B300807	CT4-2000 NOSE GUARD	2
9	B200901	CONTROL, SPEED, 500 OHM CT4	2
10	B201100	BEARING ASSEMBLY 5/16"	4
11	B401033	TERMINAL BLOCK 5 POSITION	4
12	B204033	HEATERTUBE QUARTZ 15 3/8 208V	12
13	B400261	SPRING, .038" DIA, 1.500" LENGTH	4
14	B400300	LEGS, BLACK 1" 1/4-20	4
15	B401051	CORD, POWER 12/3 60" 6-30P	1
16	B401060	CORD,FAN,HP-75.24-A	1
17	B401100	RESET SWITCH	1
18	B401102	SWITCH, 240V	4
19	B401103	SWITCH, ROTARY POWER	2
20	B401107	SWITCH FAN CERAMIC	1
21	B401211	230V MOTOR, FAN	1
22	B401220	GUARD, FAN	1
23	B401300	SPROCKET, 25B17 X 8MM	4
24	B401349	IDLE SHAFT SO2 14.5"	2
25	B401342	SHAFT, DRIVE, 14.5"	2
26	B401352	BEARING, FRONT, SPRING-HOUSING	4
27	B401423	CT4-DUAL UPPER CHAMBER LABEL	1
28	B401424	CT4-DUAL LOWER CHAMBER LABEL	1
29	B205138	WIRE CONVEYOR BELT 14.5" X 41"	2
30	B401201	DRIVE MOTOR 208/240V RMS 344	1
31	B401203	DRIVE MOTOR, 208/240V REVERSED	1
32	B401386	CHAIN LADDER, 13.25"	1
33	B401387	CHAIN, LADDER, 26"	1
34	B400321	STRAIGHT 12 GA STRAIN RELIEF BUSHING	1
35	B405038	CT4-DUAL RESET LABEL	1
36	B400331	7/8 WIRE CLAMP	1
37	B405018	SILVER PUSH-ON KNOB	6
38	B405019	SILVER PUSH-ON KNOB W/ SET SCREW	2