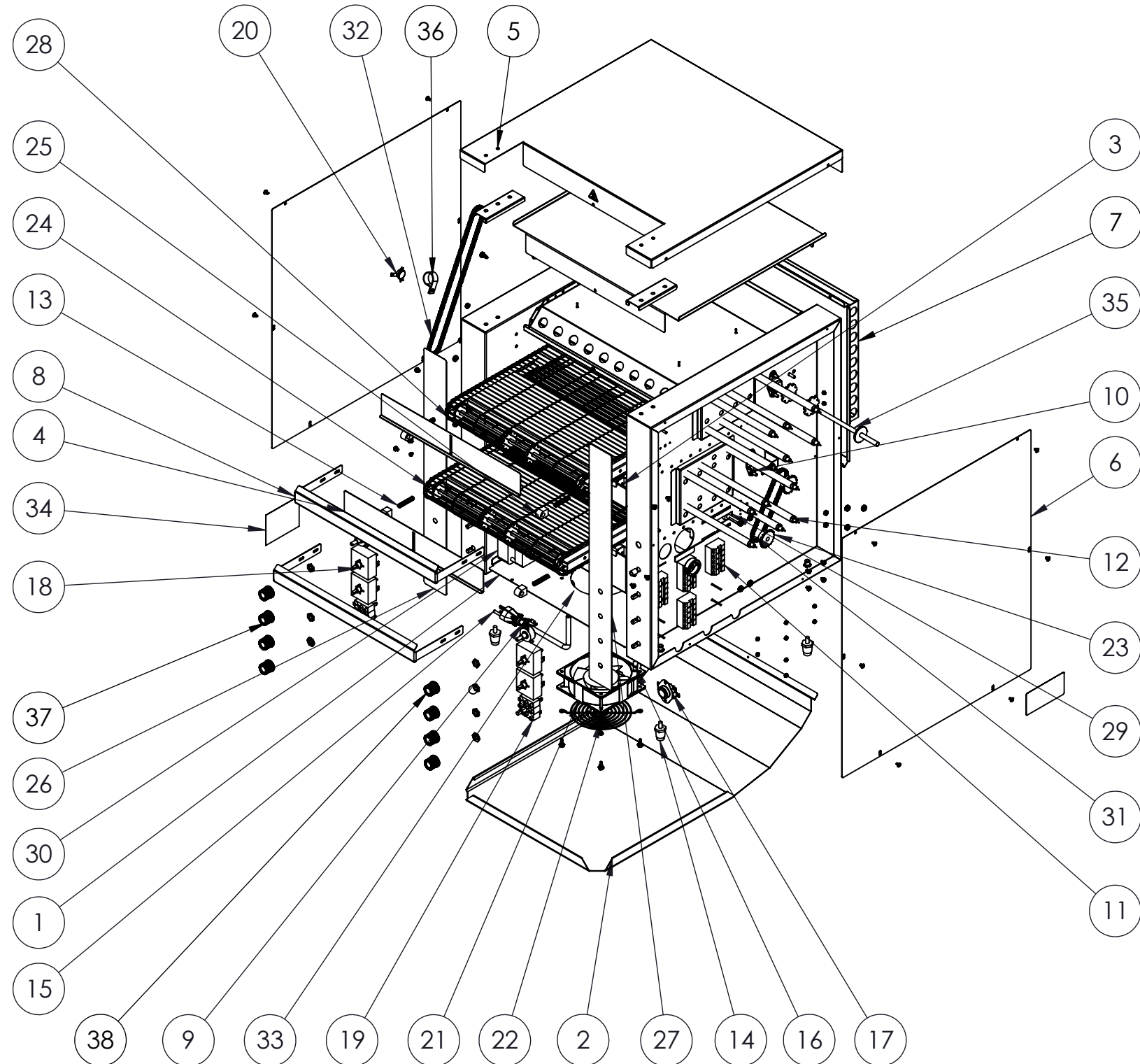




DUAL CONVEYOR TOASTER - 220V



BOM Table			
ITEM NO.	DESCRIPTION	PART NUMBER	QTY.
1	CT4 18" CONTROL BOX COVER	B300005	1
2	CT4 18" TOAST CHUTE	B300013	1
3	SO2 14.5" CRUMB TRAY ASSM	B205129	2
4	CT4H 18" HEAT SHUTTER	B300059	2
5	CT4-DUAL TOP COVER	B300233	1
6	CT4-DUAL SIDE PANEL	B300230	2
7	CT4 DUAL BACK PANEL	B205153	1
8	CT4-2000 NOSE GUARD	B300807	2
9	CONTROL, SPEED, 500 OHM CT4	B200901	2
10	BEARING ASSEMBLY 5/16"	B201100	4
11	TERMINAL BLOCK 5 POSITION	B401033	4
12	HEATERTUBE, QUARTZ 15 3/8 220V	B204162	12
13	SPRING, .038" DIA, 1.500" LENGTH	B400261	4
14	LEGS, BLACK 1" 1/4-20	B400300	4
15	CORD, POWER 12/3 60" 6-30P	B401051	1
16	CORD,FAN,HP-75.24-A	B401060	1
17	RESET SWITCH	B401100	1
18	SWITCH, 240V	B401102	4
19	SWITCH, ROTARY POWER	B401103	2
20	SWITCH FAN CERAMIC	B401107	1
21	230V MOTOR, FAN	B401211	1
22	GUARD, FAN	B401220	1
23	SPROCKET, 25B17 X 8MM	B401300	4
24	IDLE SHAFT SO2 14.5"	B401349	2
25	BEARING, FRONT, SPRING-HOUSING	B401352	4
26	CT4-DUAL UPPER CHAMBER LABEL	B401423	1
27	CT4-DUAL LOWER CHAMBER LABEL	B401424	1
28	WIRE CONVEYOR BELT 14.5" X 41"	B205138	2
29	DRIVE MOTOR 208/240V RMS 344	B401201	1
30	DRIVE MOTOR, 208/240V REVERSED	B401203	1
31	CHAIN LADDER, 13.25"	B401386	1
32	CHAIN , LADDER, 26"	B401387	1
33	STRAIGHT 12 GA STRAIN RELIEF BUSHING	B400321	1
34	CT4-DUAL RESET LABEL	B405038	1
35	SHAFT, DRIVE, 14.5"	B401342	2
36	7/8 WIRE CLAMP	B400331	1
37	SILVER PUSH-ON KNOB	B405018	6
38	SILVER PUSH-ON KNOB W/ SET SCREW	B405019	2