



**WELLS BLOOMFIELD, LLC**  
10 Sunnen Dr., St. Louis, MO 63143  
telephone: 314-678-6314  
fax: 314-781-2714  
[www.wellsbloomfield.com](http://www.wellsbloomfield.com)

**OWNERS MANUAL**

**COUNTERTOP  
ELECTRIC  
AUTOLIFT  
FRYERS**

**MODELS**

**F58**

**F68**

**F88**

*Model F58*



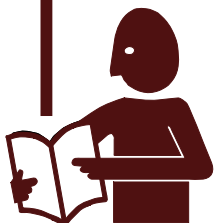
*Model F88*

**Includes  
INSTALLATION  
USE & CARE  
EXPLODED VIEW  
PARTS LIST  
WIRING DIAGRAM**

**IMPORTANT: DO NOT DISCARD THIS MANUAL**

This manual is considered to be part of the appliance and is to be given to the OWNER or MANAGER of the restaurant, or to the person responsible for TRAINING OPERATORS of this appliance. Additional manuals are available from your WELLS DEALER.

**THIS MANUAL MUST BE READ AND UNDERSTOOD BY ALL PERSONS USING OR INSTALLING THIS APPLIANCE.** Contact your WELLS DEALER if you have any questions concerning installation, operation or maintenance of this equipment.



## LIMITED WARRANTY STATEMENT

Unless otherwise specified, all commercial cooking equipment manufactured by WELLS BLOOMFIELD, LLC is warranted against defects in materials and workmanship for a period of one year from the date of original installation or 18 months from the date of shipment from our factory, whichever comes first, and is for the benefit of the original purchaser only.

THIS WARRANTY IS THE COMPLETE AND ONLY WARRANTY, EXPRESSED OR IMPLIED IN LAW OR IN FACT, INCLUDING BUT NOT LIMITED TO, WARRANTIES OF MERCHANTABILITY OR FITNESS FOR ANY PARTICULAR PURPOSE, AND/OR FOR DIRECT, INDIRECT OR CONSEQUENTIAL DAMAGES IN CONNECTION WITH WELLS BLOOMFIELD PRODUCTS. This warranty is void if it is determined that, upon inspection by an authorized service agency, the equipment has been modified, misused, misapplied, improperly installed, or damaged in transit or by fire, flood or act of God. It also does not apply if the serial nameplate has been removed, or if service is performed by unauthorized personnel. The prices charged by Wells Bloomfield for its products are based

upon the limitations in this warranty. Seller's obligation under this warranty is limited to the repair of defects without charge by a Wells Bloomfield factory authorized service agency or one of its sub-service agencies. This service will be provided on customer's premises for non-portable models. Portable models (a device with a cord and plug) must be taken or shipped to the closest authorized service agency, transportation charges prepaid, for service. In addition to restrictions contained in this warranty, specific limitations are shown in the Service Policy and Procedure Guide. Wells Bloomfield authorized service agencies are located in principal cities. This warranty is valid in the United States and Canada and void elsewhere. Please consult your classified telephone directory, your foodservice equipment dealer or contact:

**Wells Bloomfield, LLC**  
**10 Sunnen Dr., St. Louis MO 63143 USA**  
**phone (314) 678-6314 or fax (314) 781-2714**

for information and other details concerning warranty.

## SERVICE POLICY AND PROCEDURE GUIDE and ADDITIONAL WARRANTY EXCLUSIONS

1. Resetting of safety thermostats, circuit breakers, over load protectors, and/or fuse replacements are **not** covered by this warranty unless warranted conditions are the cause.
2. All problems due to operation at **voltages or phase other than specified on equipment nameplates** are **not** covered by this warranty. Conversion to correct voltage and/or phase must be the customer's responsibility.
3. All problems due to **electrical connections not made in accordance with electrical code requirements and wiring diagrams** supplied with the equipment are **not** covered by this warranty.
4. Replacement of items **subject to normal wear**, to include such items as knobs, light bulbs; and, normal maintenance functions including adjustments of thermostats, adjustment of micro switches and replacement of fuses and indicating lights are **not** covered by warranty.
5. Damage to electrical cords and/or plug due to exposure to excessive heat are **not** covered by this warranty.
6. Full use, care, and maintenance instructions supplied with each machine. Noted maintenance and preventative maintenance items, such as servicing and cleaning schedules, are customer responsibility. Those miscellaneous adjustments noted are customer responsibility. Proper attention to preventative maintenance and scheduled maintenance procedures will prolong the life of the appliance.
7. Travel mileage is limited to **sixty (60) miles** from an Authorized Service Agency or one of its sub-service agencies.
8. All labor shall be performed during regular working hours. Overtime premium will be charged to the buyer.
9. All genuine Wells replacement parts are warranted for ninety (90) days from date of purchase on non-warranty equipment. This parts warranty is limited only to replacement of the defective part(s). **Any use of non-genuine Wells parts completely voids any warranty.**
10. Installation, labor, and job check-outs are **not** considered warranty and are thus **not** covered by this warranty.
11. Charges incurred by delays, waiting time or operating restrictions that hinder the service technician's ability to perform service are **not** covered by warranty. This includes institutional and correctional facilities.

## SHIPPING DAMAGE CLAIM PROCEDURE

**NOTE:** For your protection, please note that equipment in this shipment was carefully inspected and packaged by skilled personnel before leaving the factory. Upon acceptance of this shipment, the transportation company assumes full responsibility for its safe delivery.

### IF SHIPMENT ARRIVES DAMAGED:

1. **VISIBLE LOSS OR DAMAGE:** Be certain that any visible loss or damage is noted on the freight bill or express receipt, and that the note of loss or damage is signed by the delivery person.
2. **FILE CLAIM FOR DAMAGE IMMEDIATELY:** Regardless of the extent of the damage.

3. **CONCEALED LOSS OR DAMAGE:** if damage is unnoticed until the merchandise is unpacked, notify the transportation company or carrier immediately, and file "CONCEALED DAMAGE" claim with them. This should be done within fifteen (15) days from the date the delivery was made to you. Be sure to retain the container for inspection.

Wells Bloomfield cannot assume liability for damage or loss incurred in transit. We will, however, at your request, supply you with the necessary documents to support your claim.

## TABLE OF CONTENTS

WARRANTY	xi
SPECIFICATIONS	1
FEATURES & OPERATING CONTROLS	2
PRECAUTIONS & GENERAL INFORMATION	3
AGENCY LISTING INFORMATION	4
INSTALLATION	4
OPERATION	6
CLEANING INSTRUCTIONS	7
TROUBLESHOOTING SUGGESTIONS	9
MAINTENANCE	10
EXPLODED VIEW & PARTS LIST	11
WIRING DIAGRAM	20
PARTS & SERVICE	23
CUSTOMER SERVICE DATA	23

## INTRODUCTION

Thank You for purchasing this Wells Bloomfield appliance.

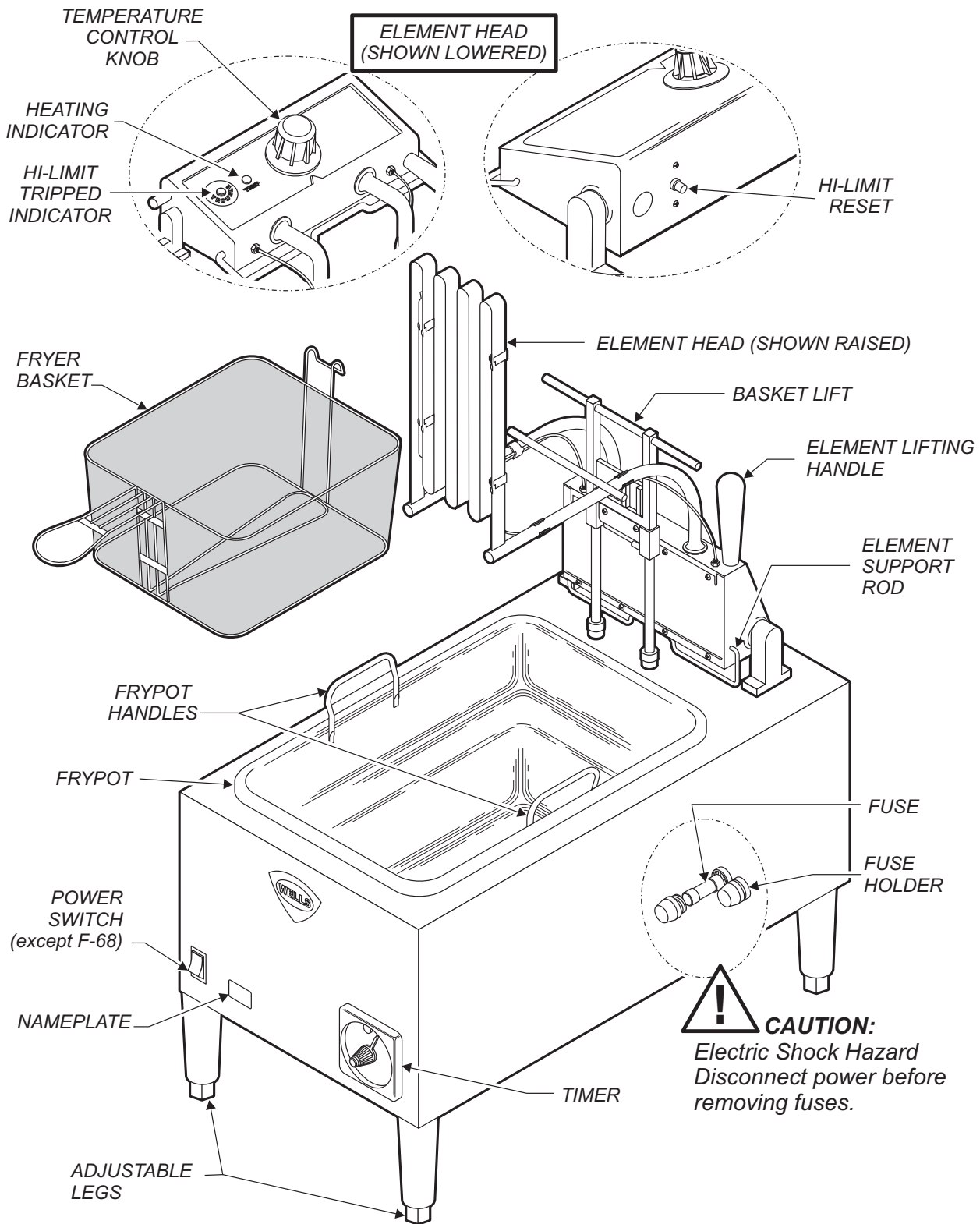
Proper installation, professional operation and consistent maintenance of this appliance will ensure that it gives you the very best performance and a long, economical service life.

This manual contains the information needed to properly install this appliance, and to use and care for the appliance in a manner which will ensure its optimum performance.

## SPECIFICATIONS

MODEL	VOLTS	AMPS	WATTS	POWER SUPPLY CORD
F58	208 VAC 1 $\emptyset$	27.6A	5.75KW	NOT SUPPLIED
	240 VAC 1 $\emptyset$	24.0A	5750W	
F68	208/240 VAC 3 $\emptyset$	L1=28.8/33.2A L2=16.6/19.2A L3=16.6/19.2A	6.9/9.2KW	NOT SUPPLIED
F88	208 VAC 3 $\emptyset$	L1=31.9A L2=31.9A L3=31.9A	11.5KW	NOT SUPPLIED
	240 VAC 3 $\emptyset$	L1=27.6A L2=27.6A L3=27.6A	11.5KW	

# FEATURES & OPERATING CONTROLS



M302 p/n 2M-307589 Owners Manual Electric Countertop Autolift Fryers

Fig. 1 Countertop Autolift Fryer - Features & Operating Controls  
F-58 Shown - Others are Similar

## PRECAUTIONS AND GENERAL INFORMATION



### DANGER: SEVERE BURN HAZARD

Contact with hot oil will cause severe burns. Always wear protective clothing and heat resistant gloves when operating the fryer or filtering the oil.



### WARNING: ELECTRIC SHOCK HAZARD

All servicing requiring access to non-insulated components must be performed by qualified service personnel. DO NOT open any access panel that requires the use of tools. Failure to heed this warning may result in severe electric shock.



### WARNING: BURN HAZARD

DO NOT allow water or ice to contact hot oil. DO NOT attempt to cool the oil with water or ice. The water will boil violently, causing hot oil to foam and splatter. Contact with splattering or foaming hot oil will cause severe burns.

This appliance is intended for use in commercial establishments only.

This appliance is intended to prepare food for human consumption. No other use is recommended or authorized by the manufacturer or its agents.

Operators of this appliance must be familiar with the appliance use, limitations and associated restrictions. Operating instructions must be read and understood by all persons using or installing this appliance.

Cleanliness of this appliance is essential to good sanitation. Read and follow all included cleaning instructions and schedules to ensure the safety of the food product.

Disconnect this appliance from electrical power before performing any maintenance or servicing.

DO NOT submerge this appliance in water. This appliance is not jet stream approved. Do not direct water jet or steam jet at this appliance, or at any control panel or wiring. Do not splash or pour water on, in or over any controls, control panel or wiring.

Exposed surfaces of this appliance can be hot to the touch and may cause burns.

The technical content of this manual, including any wiring diagrams, schematics, parts breakdown illustrations and/or adjustment procedures, is intended for use by qualified technical personnel.

Any procedure which requires the use of tools must be performed by a qualified technician.

This manual is considered to be a permanent part of the appliance. This manual and all supplied instructions, diagrams, schematics, parts breakdown illustrations, notices and labels must remain with the appliance if it is sold or moved to another location.

This appliance is made in the USA. Unless otherwise noted, this appliance has American sizes on all hardware.



### CAUTION: BURN HAZARD

Contact with hot oil may cause burns. DO NOT fill fryer beyond MAX OIL line on frypot.

For disposal of oil use only a container specifically designed for the disposal of hot oil. DO NOT fill hot oil disposal container beyond MAX OIL line.



### CAUTION: RISK OF DAMAGE

DO NOT connect or energize this appliance until all installation instructions are read and followed. Damage to the appliance will result if these instructions are not followed.



### CAUTION: HOT SURFACE

Exposed surfaces can be hot to the touch and may cause burns.

## AGENCY LISTING INFORMATION

This appliance conforms to NSF Standard 4 for sanitation only if installed in accordance with the supplied *Installation Instructions* and maintained according to the instructions in this manual.

This appliance is U Listed under UL File E6070 for 208V and 240V.



## INSTALLATION

### UNPACKING & INSPECTION

Carefully remove the appliance from the carton. Remove all protective plastic film, packing materials and accessories from the Appliance before connecting electrical power or otherwise performing any installation procedure.

Carefully read all instructions in this manual and the *Installation Instruction Sheet* packed with the appliance before starting any installation.

Read and understand all labels and diagrams attached to the appliance.

Carefully account for all components and accessories before discarding packing materials. Store all accessories in a convenient place for later use.

#### COMPONENTS

1 or 2 ea.	FRYPOT
1, 2 or 4 ea.	FRY BASKET
4 ea.	ADJUSTABLE LEGS

### SETUP

Setup the appliance only on a firm, level, non-combustible surface. Verify local codes for requirements. Concrete, tile, terrazzo or metal surfaces are recommended. Metal over combustible material may not meet code for non-combustible surfaces.

Install one adjustable leg at each corner of the fryer by screwing the leg into the fitting on the bottom. With a spirit level, check that the appliance is level front-to-back and side-to-side. Verify that the unit sits firmly ON ALL FOUR LEGS.

The lower portions of the legs are adjustable by turning; adjust as required to level the appliance. All four legs must be adjusted to firmly contact the counter in order to prevent tipping.

Refer to the *Installation Instruction Sheet* for required clearances. Maintain required clearances between the appliance and adjacent combustible surfaces.

Avoid storing flammable or combustible materials in, on or near the appliance.

**NOTE:** DO NOT discard the carton or other packing materials until you have inspected the appliance for hidden damage and tested it for proper operation. Refer to *SHIPPING DAMAGE CLAIM PROCEDURE* on the inside front cover of this manual.

#### IMPORTANT:

This installation must comply with all applicable Federal, Local and NFPA codes.

SCREW INTO CABINET  
MOUNTING HOLES



TURN TO  
ADJUST HEIGHT

Fig. 2 Adjustable Legs



### WARNING: ELECTRIC SHOCK HAZARD

All servicing requiring access to non-insulated electrical components must be performed by a factory authorized technician.

DO NOT open any access panel which requires the use of tools. Failure to follow this warning can result in severe electrical shock.

### FRYER ELECTRICAL INSTALLATION

Countertop autolift fryers must be connected directly to a suitable electric circuit. Conduit and strain relief must be provided by the electrician. Refer to nameplate for voltage and amperage requirements. Single phase fryers require a 208VAC or 240VAC 1 $\phi$  circuit with ground. Three phase fryers require a 208VAC or 240VAC 3 $\phi$  circuit with ground.

Raise the element head, remove the frypot and the cover at the rear of the fryer to gain access to the terminal block. The electrical inlet is provided by a knock-out in the rear panel.

If an equipment shutdown interface is required by local fire code, the flame sensor terminal block may be accessed by removing the back panel. Replace the jumper of the terminal block with wiring to a normally closed contact of the building fire management system.

DO NOT connect power to the flame sensor terminal block. Wiring and contacts must be capable of handling 30 amps.

F-68 and F-88 FRYERS ARE SHIPPED FROM THE FACTORY WIRED FOR 3 $\phi$ . Conversion to single phase is the responsibility of the electrician.



### CAUTION: RISK OF DAMAGE

DO NOT connect or energize this appliance until all installation instructions are read and followed. Damage to the appliance will result if these instructions are not followed.



### CAUTION: ELECTRICAL SHOCK HAZARD

The ground lug of the fryer must be connected to a suitable building electric ground.

### IMPORTANT:

Damage due to being connected to the wrong voltage or phase is NOT covered by warranty.

### NOTE:

Fryers are shipped from the factory with the basket lift in the UP position.

## OPERATION



### DANGER: BURN HAZARD

Contact with hot oil will cause severe burns.

Always wear protective clothing and heat resistant gloves when operating the fryer.



### CAUTION: HOT SURFACE

Exposed surfaces can be hot to the touch and may cause burns.

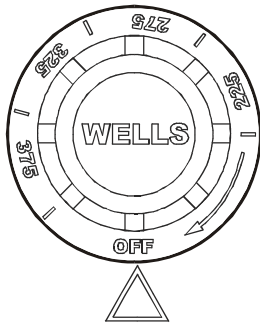


Fig. 3 Temperature Control Knob

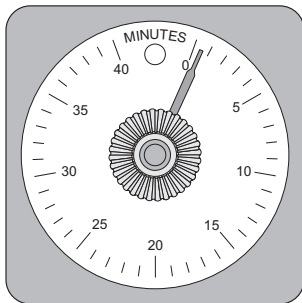


Fig. 4 Timer

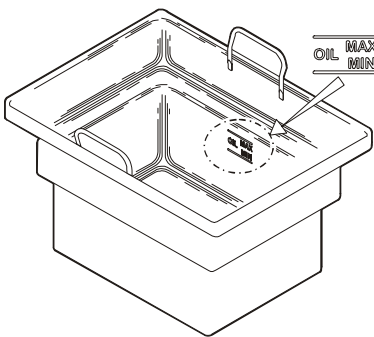


Fig. 5 Oil Level Marking

### NORMAL OPERATION

1. a. Be sure TEMPERATURE CONTROL KNOB is turned to *OFF*.  
b. Lower ELEMENT HEAD into frypot by pulling back on ELEMENT LIFTING HANDLE, raising ELEMENT HEAD SUPPORT ROD, then carefully lowering elements into frypot.
2. Fill FRYPOT with commercial-grade liquid shortening to MIN OIL line. Capacity is 15 pounds (F-58), or 30 pounds (F-68 and F-88).

**IMPORTANT:** DO NOT overfill frypot. Cold oil will expand as it heats. Adding too much oil will allow frypot to overflow during operation. For best results, always use top grade commercial shortening made specially for frying. Maintain proper oil level in frypot during operation.

3. Turn TEMPERATURE CONTROL KNOB to desired temperature. Press HEATER switch to ON position. HEAT INDICATOR will glow. When oil reaches the desired temperature, heat indicator will go out. Heat indicator will go off and on during operation as thermostat cycles to maintain temperature. For best results: DO NOT set temperature control to a temperature setting higher than is required for the food product.
4. Load either or both baskets no more than 1/2 full with food product. DO NOT overload fry baskets. For best results, load baskets uniformly to half full. Hang the basket on the BASKET LIFT.
5. Set TIMER DIAL to the desired cooking time. Press the red button on the timer to lower the basket into the hot oil. When food is cooked, basket will be lifted out of the oil. Handle the hot basket only by the basket handle.
5. When heat indicator light cycles off, fryer is ready to cook next load.
6. Reduce temperature control to 225°F during idle periods to save power and extend life of the oil. Fryer will return to operating temperature in just a few minutes when needed.

**IMPORTANT:** Press POWER switch to OFF when raising element head to avoid injury or damage.

7. Keep fryer clean at all times. Rinse baskets frequently, and dry thoroughly, in order to prevent oil contamination.
8. Drain the frypot completely after use. Filter the oil daily, or more often during heavy use.

**NOTE:** If the oil temperature exceeds 440°F, the hi-limit safety will shut down the unit, and light the red **TROUBLE** light. To reset: Allow the oil to cool, then press the red button on the back of the element head until it “clicks” and stays in.

If tripping persists, see Troubleshooting Suggestions, page 9.

## CLEANING INSTRUCTIONS



### DANGER: BURN HAZARD

Contact with hot oil will cause severe burns. Allow the fryer to cool before cleaning. Always wear protective clothing and heat resistant gloves when cleaning the fryer.

### PREPARATION

Turn temperature control and heat switch *OFF*  
Allow fryer to cool completely before cleaning  
Unplug fryer from receptacle before cleaning

### FREQUENCY

Daily, or as needed

### TOOLS

Mild Detergent, Non-abrasive cleanser  
Soft Cloth or Sponge, Plastic Scouring Pad  
Container for disposal of used oil.



### CAUTION: ELECTRIC SHOCK HAZARD

Disconnect fryer from electric power before cleaning.



### CAUTION: BURN HAZARD

Allow fryer to cool completely before cleaning.



### CAUTION: ELECTRIC SHOCK HAZARD

Do not submerge fryer in water.

### CLEANING

1. Be sure basket lift is *UP*. Turn temperature control and power switch *OFF*. Disconnect fryer from electric power.
2. Remove fry baskets, then swing element head up and out of frypot.  
**NOTE:** Element support rod is spring-loaded. When element head is raised, support rod will automatically swing into position to keep element head raised.
3. Allow oil to cool to a safe temperature (120°F or less). Carefully remove frypot: wearing heat-resistant gloves, lift frypot by the handles. Drain frypot oil into a suitable container.
4. Frypot and baskets may be washed in a dishwasher, or with warm water and mild detergent. Rinse thoroughly and dry completely.
5. Wipe/brush all crumbs, breading and cooking debris from elements. Pay particular attention to the area between the element and the thermobulbs. Be careful that the capillary tubes of the thermobulbs are not moved or damaged during cleaning.
6. Keep all exterior surfaces free from splashed grease by wiping with a clean cloth dampened with warm water and mild detergent. A non-abrasive detergent and plastic scouring pad may be used for stubborn deposits.

**IMPORTANT:** DO NOT use steel wool or abrasive cleansers as these will damage the surface finish.

**IMPORTANT:** DO NOT submerge fryer in water. DO NOT spill or pour water into controls, control panel or wiring. Damage to internal components will occur.

7. Be certain frypot is completely dry, then reinstall in fryer.
  - a. Be sure the TEMPERATURE CONTROL KNOB and HEAT switch are turned *OFF*, then reconnect unit to electric power.
  - b. Lower the ELEMENT HEAD into the frypot by pushing back on the ELEMENT LIFTING HANDLE, raising the SUPPORT ROD, then carefully lowering the elements.
  - c. Add new or filtered oil to the MIN OIL line in frypot

Procedure is complete.

**IMPORTANT:** DO NOT spill or pour water into controls, control panel or wiring.

**DO NOT** submerge fryer in water. Damage to internal components will occur. Damage to internal components from water damage is **not** covered by warranty.

**IMPORTANT:** DO NOT use steel wool or abrasive cleansers for cleaning the fryer cabinet or frypot.

To remove carbonization from frypot and element, see *PERIODIC CLEANING* on page 10.

**IMPORTANT:** Nickel plated frypot must be dried completely in order to prevent rusting, and to eliminate water contamination of the cooking oil.

## DISPOSAL OF USED OIL



### DANGER: BURN HAZARD

Contact with hot oil will cause severe burns. Allow the fryer to cool before cleaning. Always wear protective clothing and heat resistant gloves when handling hot oil.

**PREPARATION** Turn temperature control and heat switch *OFF*  
Allow fryer to cool completely before draining

**FREQUENCY** Daily, or as needed

**TOOLS** Container for disposal of used oil.



### CAUTION: BURN HAZARD

Allow fryer to cool completely before draining.

## OIL DISPOSAL

1. Turn temperature control and heat switch *OFF*.
2. Allow oil to cool to a safe temperature (120°F or 50°C).
3. Raise element head and lift frypot out of fryer by the frypot handles.
4. Dispose of the used oil in an approved oil disposal receptacle, or filter for reuse.
5. Wipe frypot clean and reinstall in the fryer.

Procedure is complete.



### CAUTION: SLIP AND FALL HAZARD

Clean up oil spills immediately. Slipping in oil can cause injury.



### CAUTION: HEALTH HAZARD

Clean up oil spills immediately. Oil provides an environment for the growth of bacteria, which presents a health hazard.

## TROUBLESHOOTING SUGGESTIONS

DESCRIPTION	POSSIBLE PROBLEM	SUGGESTED REMEDY
Fryer will not heat	Not plugged in or circuit breaker tripped	Plug into proper receptacle Reset circuit breaker
	Fuse blown	Contact Wells Authorized Service Agency for repairs
	Heat switch not ON	Press heat switch ON
	Temperature control knob not set to desired temperature	Set to desired temperature
	Hi-limit safety tripped	Clean element <sup>1</sup> , reset hi-limit
	Damaged internal component	Contact Wells Authorized Service Agency for repairs
Fryer will not maintain temperature	Temperature control thermostat thermobulb contaminated with cooking debris	Clean element <sup>2</sup>
	Damaged internal component	Contact Wells Authorized Service Agency for repairs
Fryer leaks oil	Damaged frypot	Contact Wells Authorized Service Agency for repairs
Element head will not raise	Frypot out of position, or has excess cooking debris in bottom	Check frypot for position Clean frypot
Element head will not stay in the up position	Damaged hinge bracket or support rod	Contact Wells Authorized Service Agency for repairs
Element head will not lower	Damaged hinge bracket or support rod	Contact Wells Authorized Service Agency for repairs
Basket lift will not lower	Timer not set	Set to desired cook time
	Red button on timer not pushed	Push to start
	Damaged internal component	Contact Wells Authorized Service Agency for repairs
Basket lift will not raise	Damaged internal component	Contact Wells Authorized Service Agency for repairs

<sup>1</sup> The hi-limit safety is designed to shut down the fryer if the oil temperature exceeds 440°F. A build-up of cooking debris between the heating element and the thermobulb of the hi-limit safety will cause the hi-limit to trip prematurely. Clean the element so that oil may circulate freely between the element and the thermobulb. Reset the safety by pressing the red button on the bask of the element head.

<sup>2</sup> A build-up of cooking debris between the heating element and the thermobulb temperature control thermostat will cause inconsistent temperatures. Clean the element so that oil may circulate freely between the element and the thermobulb.

## MAINTENANCE

Periodic cleaning is necessary to remove carbonization from the elements and frypot.

Frypot may be cleaned by the method described at right, or with a commercial frypot cleaner. Be sure to follow the manufacturer's directions.

Before cleaning, ALWAYS:

- Turn heat switch and temperature control OFF and allow fryer to cool.
- Drain the oil and wipe out the frypot.

### PERIODIC CLEANING

Add 1/2 cup of granulated dishwasher detergent to frypot. Fill with water to MAX OIL line.

Lower element into the frypot. Press heat switch ON and set temperature control knob to 225°F.

Boil the mixture for five minutes. Turn heat switch and control knob OFF. Allow mixture to set in frypot overnight.

After soak period, raise elements and remove any remaining carbonization with a stiff bristle brush. Be careful that capillary tubes of the thermobulbs are not moved or damaged during cleaning.

Drain frypot and wash with warm water and mild detergent.

Reinstall the frypot in the fryer. Add 1 quart of vinegar, then fill to the MAX OIL line with cold water.

Lower elements into the vinegar solution with heat switch and temperature control OFF. Allow to set for 15 minutes.

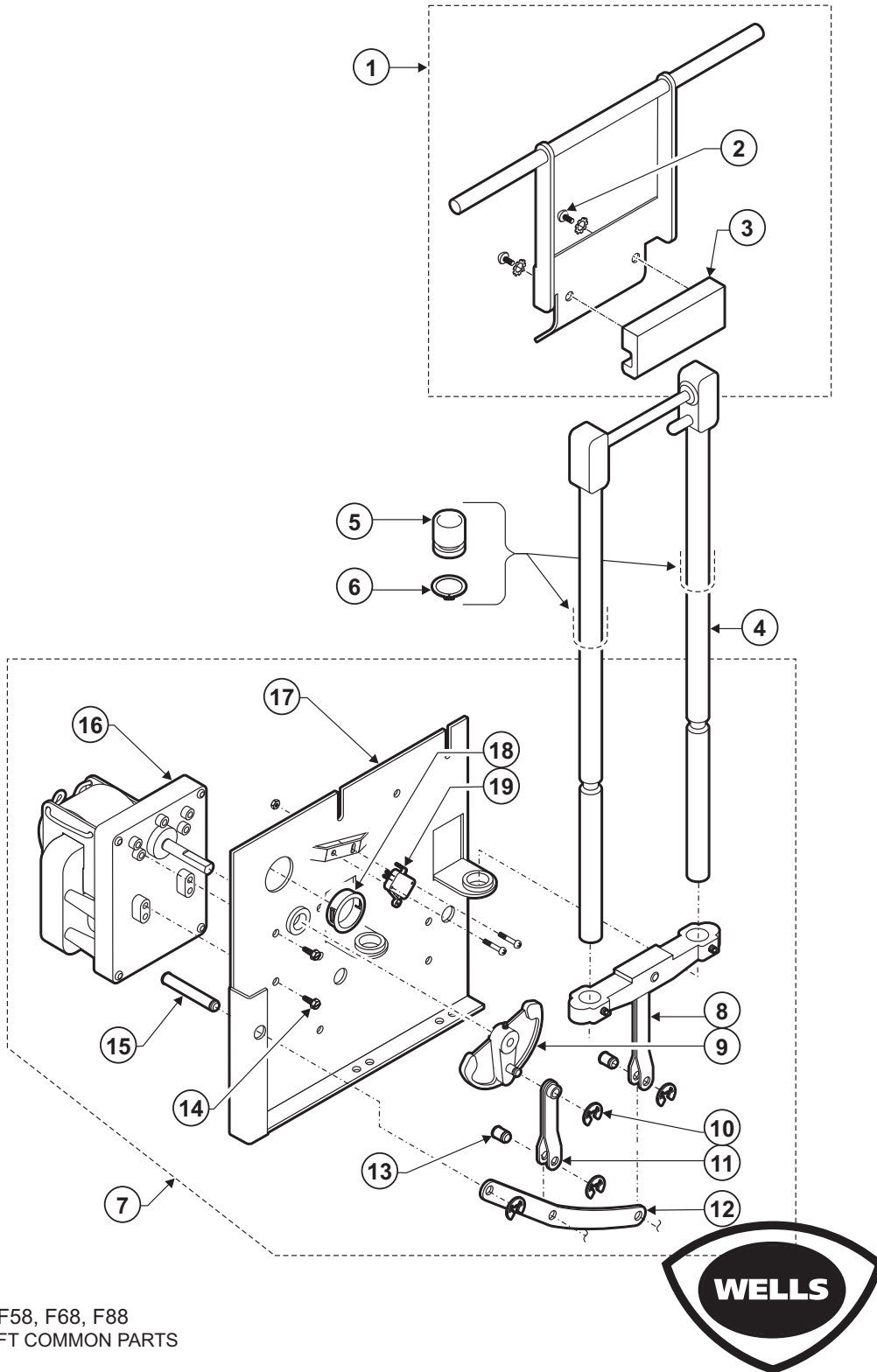
Drain the frypot and rinse with clean water. Dry the frypot and elements thoroughly before returning the fryer to operation.

**IMPORTANT:** Nickel plated frypot must be dried completely in order to prevent rusting, and to eliminate water contamination of the cooking oil.



# EXPLODED VIEW: AUTOLIFT COMMON PARTS

## AUTOLIFT COMMON PARTS



Model: F58, F68, F88  
AUTOLIFT COMMON PARTS

PL302

IL1778 Rev. A 5/19/09



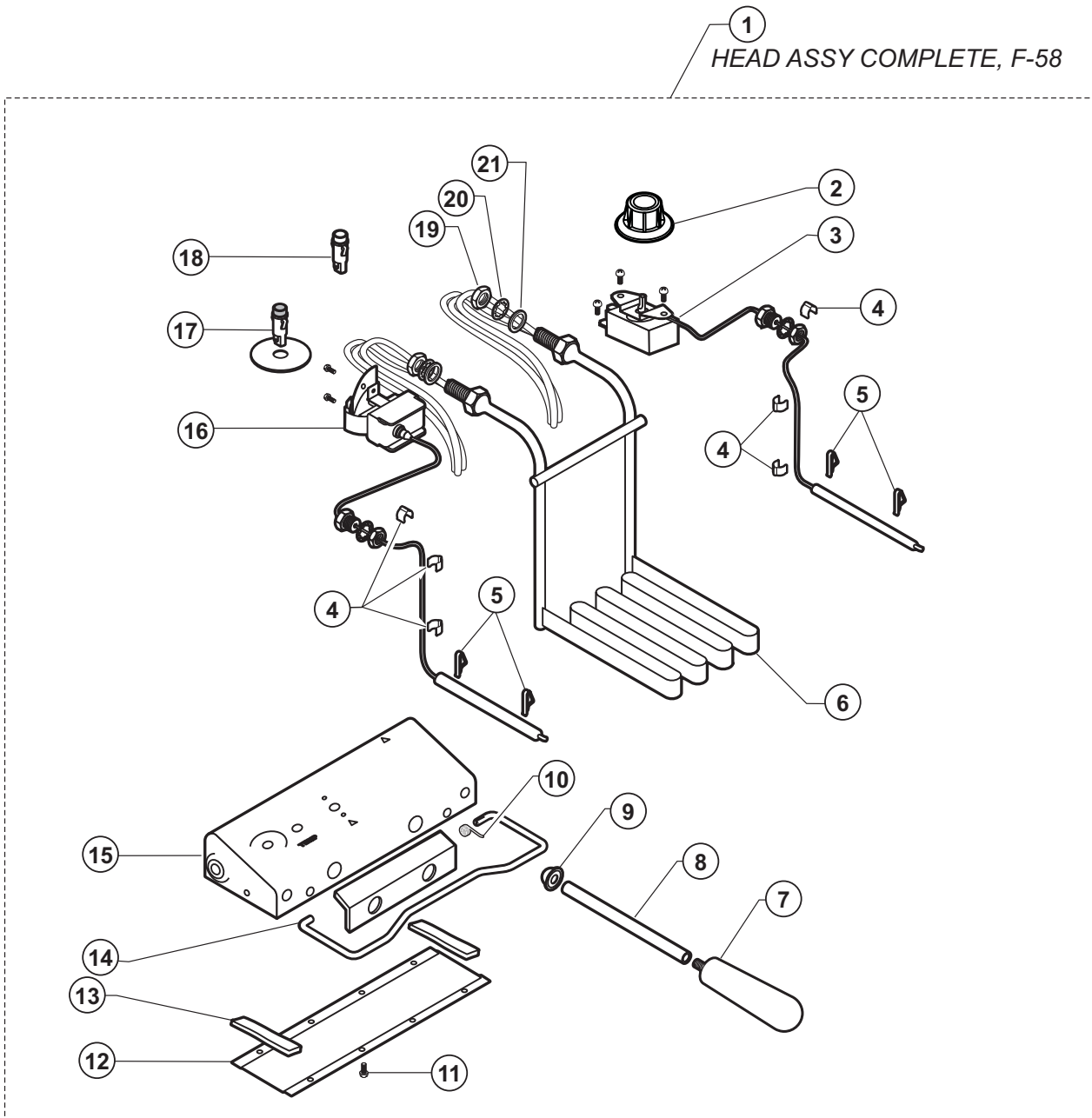
M302 p/n 2M-307589 Owners Manual Electric Countertop Autolift Fryers

## PARTS LIST: AUTOLIFT COMMON PARTS

<b>F58 F68 F88 ELECTRIC FRYER\ AUTOLIFT COMMON PARTS</b>			
<b>Fig No</b>	<b>Part No</b>	<b>Qty</b>	<b>Description</b>
1	<a href="#">E7-WL0035</a>	1/2	LIFT BRACKET ASSEMBLY
2	<a href="#">2C-35487</a>	AR	SCREW 8-32X5/16 PH TR HD
3	DD-505658	1/2	BLOCK PIVOT SS F-58
4	<a href="#">2A-31146</a>	1/2	ROD LIFT BSKT ASSY
5	<a href="#">2I-30231</a>	2	SEAL OIL PTFE LARGE
6	<a href="#">2I-31145</a>	2	RETAINER OIL SEAL
7	<a href="#">WS-50850</a>	1/2	MOTOR LIFT ASSY
8	<a href="#">E7-30543</a>	1/2	ARM CROSS ASSY
9	<a href="#">2A-30207</a>	1/2	CRANK CASTING SHORT
10	<a href="#">2C-30222</a>	4/8	RETAINER E-RING .179ID
11	<a href="#">E7-30878</a>	1/2	ARM CRANK LEVER ASSY
12	<a href="#">2D-30215</a>	1/2	BEARING LEVER - FRYER
13	<a href="#">2A-30876</a>	2/4	PIN LEVER MOTOR ASSY.
14	<a href="#">2C-35530</a>	4/8	SCREW 8-32X3/8PH RD
15	<a href="#">2A-30205</a>	1/2	PIN PIVOT
16	<a href="#">2U-30233</a>	1/2	MOTOR LIFT ELECT FRYER
17	<a href="#">E7-31259</a>	1/2	BRKT AUTOLIFT ROHS
18	<a href="#">2K-31040</a>	1/2	BUSHING HEYCO 7/8 OD
19	<a href="#">2E-30198</a>	1/2	SWITCH UNIMAX

# EXPLODED VIEW : F58 FRY HEAD COMPONENTS

F58 COUNTERTOP SINGLE-HEAD AUTOLIFT FRYER - FRY HEAD COMPONENTS



Model: F58 COUNTERTOP SINGLE-HEAD AUTOLIFT FRYER  
 FRY HEAD COMPONENTS

PL302



IL1779 Rev. A 5/19/09

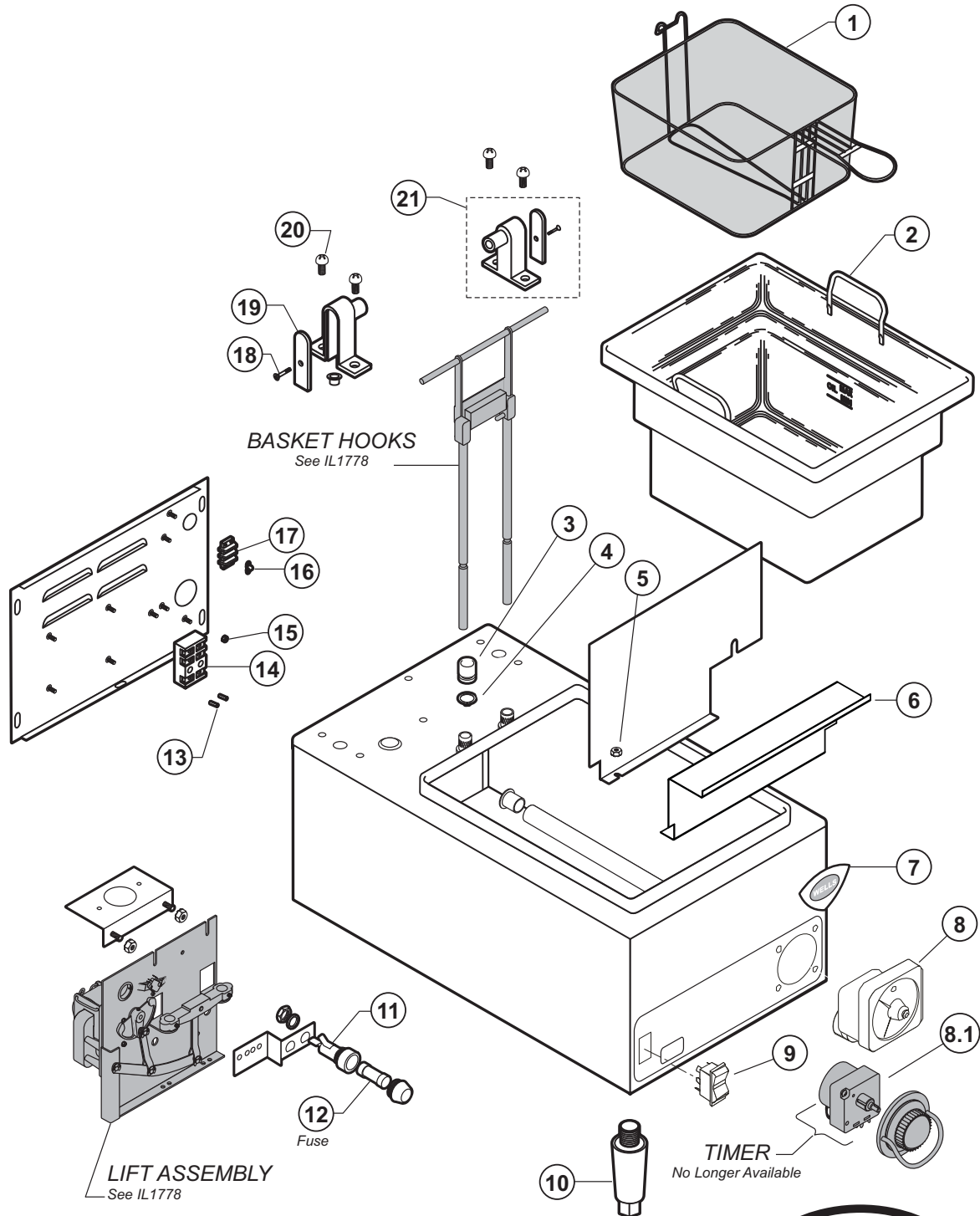
M302 p/n 2M-307589 Owners Manual Electric Countertop Autolift Fryers

## PARTS LIST: F58 FRY HEAD COMPONENTS

<b>F58 COUNTERTOP SINGLE-HEAD ELECTRIC FRYER\ FRY HEAD COMPONENTS</b>			
<b>Fig No</b>	<b>Part No</b>	<b>Qty</b>	<b>Description</b>
1	<a href="#">WS-506902</a>	1	KIT RETRO HEAD ASSY 208V
	<a href="#">WS-506903</a>		KIT RETRO HEAD ASSY 240V
2	<a href="#">2R-37882</a>	1	KNOB CONTROL ASSY AUTOFRY
3	<a href="#">WS-55510</a>	1	THERMO CONTROL FRYER
4	<a href="#">2C-30157</a>	6	CLIP CAPILLARY
5	<a href="#">2C-49689</a>	4	CLAMP BULB SS
6	<a href="#">2N-42842UL</a>	1	ELEM 208V 5750W
	<a href="#">2N-42866UL</a>		ELEM 240V 5750W
7	<a href="#">2R-30211</a>	1	HANDLE LIFT GRAY
8	<a href="#">2K-33358</a>	1	ADAPTER HANDLE F58
9	<a href="#">2P-34452</a>	1	CAP PUSH ON TYPE BASKET
10	<a href="#">2P-32428</a>	1	SPRING SUPPORT ROD
11	<a href="#">2C-35566</a>	10	SCREW 6-32X1/4 PH TR HD
12	<a href="#">DD-31202</a>	1	COVER CONTROL BOX S/SAF
13	<a href="#">2I-35747</a>	2	GASKET FRYER HEAD 3/8X3
14	<a href="#">2A-32427</a>	1	ROD SUPPORT SHORT HEAD
15	<a href="#">E7-30464</a>	1	BOX CONTROL ASSY
16	<a href="#">WS-58656</a>	1	THERMO HI-LIMIT MAN RESET
17	<a href="#">2J-31157</a>	1	LIGHT SIGNAL RED
18	<a href="#">2J-30516</a>	1	LIGHT SIGNAL AMBER
19	<a href="#">2C-30172</a>	2	NUT 7/8-14 HEX
20	<a href="#">2I-Z12311</a>	2	GASKET -FIBER WASHER
21	<a href="#">2C-30176</a>	2	WASHER LOCK FTG TUBE FRAM
NI	<a href="#">2E-307334</a>	1	RELAY 240/VAC

# EXPLODED VIEW: F58 CABINET COMPONENTS

## F58 COUNTERTOP SINGLE-HEAD AUTOLIFT FRYER - CABINET COMPONENTS



Model: F58 Countertop Single Head Autolift Fryer  
Cabinet Components

PL302



IL1780 Rev. B 11/03/10

M302 p/n 2M-307589 Owners Manual Electric Countertop Autolift Fryers

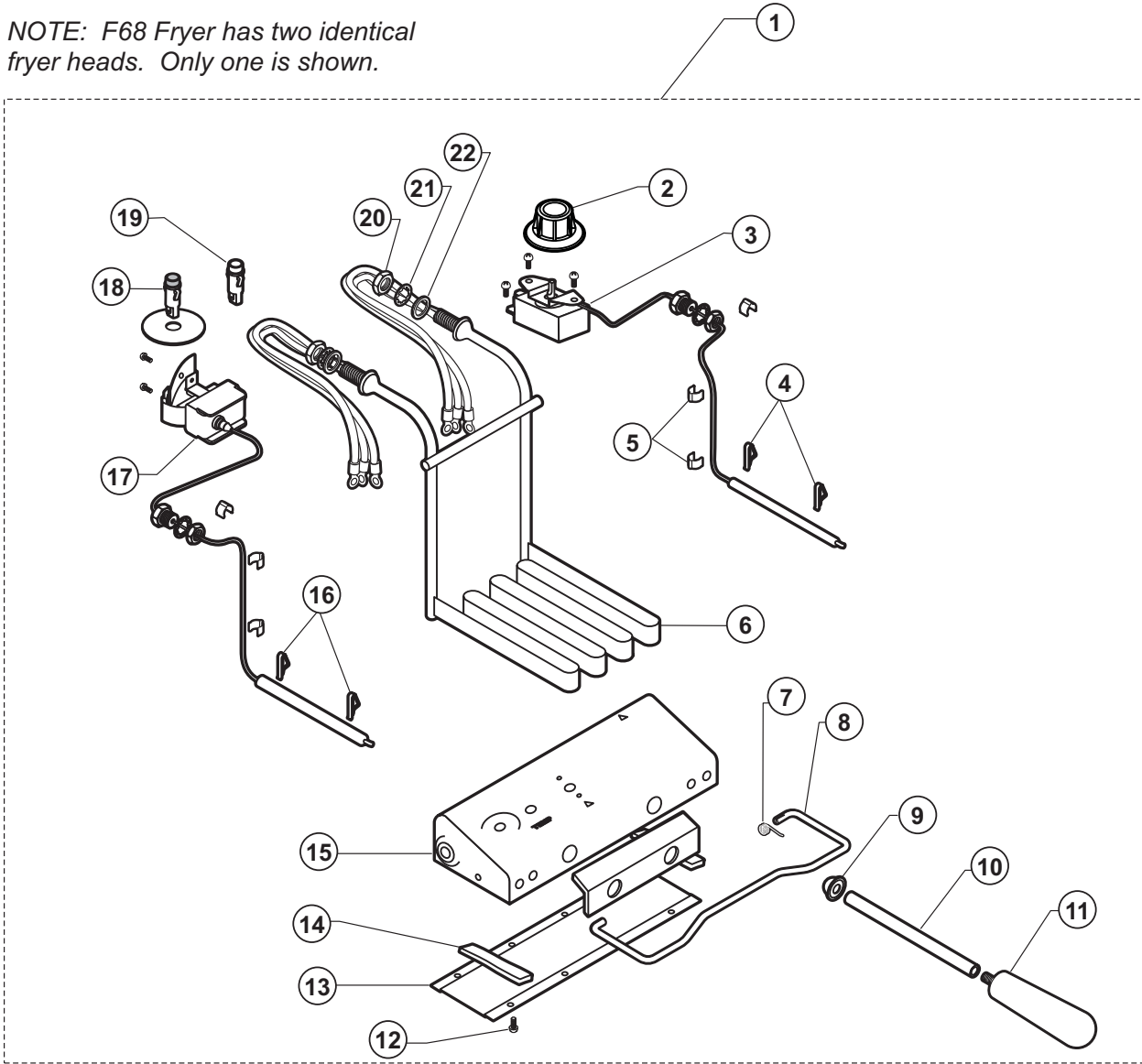
## PARTS LIST: F58 CABINET COMPONENTS

<b>F58 COUNTERTOP SINGLE-HEAD ELECTRIC FRYER\ CABINET COMPONENTS</b>			
<b>Fig No</b>	<b>Part No</b>	<b>Qty</b>	<b>Description</b>
1	<a href="#">2B-43688</a>	2	BASKET WIRE TWIN F58 F88
	<a href="#">2B-43689</a>	1	BASKET WIRE F55, SINGLE
2	<a href="#">2D-301344</a>	1	FRY POT "F" SERIES FRYERS
3	<a href="#">2I-30231</a>	2	SEAL OIL PTFE LARGE
4	<a href="#">2I-31145</a>	2	RETAINER OIL SEAL
5	<a href="#">2C-31053</a>	4	NUT 8-32 KEPS MS NICKEL
6	E7-WL0144	1	BAFFLE ASSY F58
7	<a href="#">2M-300534</a>	1	TRADEMARK DOMED LABEL
8	<a href="#">2P-Z13854</a>	1	TIMER 40MIN 240V DPST
	<a href="#">PS-WL0154</a>	1	TIMER RETROFIT KIT 48469
8.1	<a href="#">PS-WL0149</a>	1	TIMER RETROFIT KIT 30227
9	2E-74098	1	SWITCH 2 POLE 50A 50/60HZ
10	2R-Y5092	4	FEET ADJ 4GRAY 3/8-16, PLASTIC
	<a href="#">2A-35483</a>		FEET ADJ METAL 4IN
11	<a href="#">2E-34769</a>	1	FUSEHLDR HPG-EE 10A 240V
12	<a href="#">2E-34768</a>	1	FUSE SC-10 A0A 300V
13	<a href="#">2C-41974</a>	2	NUT 8-32 HEX 7/8 LONG ALU
14	<a href="#">2E-33068</a>	1	TERM BLOCK FLAME SENSOR
15	<a href="#">2C-35736</a>	1	NUT 8-32 HEX KEPS MS GREEN
16	<a href="#">2E-34005</a>	1	JUMPER FLAME SENSOR TERM
17	<a href="#">2E-33068</a>	1	TERM BLOCK FLAME SENSOR
18	<a href="#">2C-31717</a>	2	SCREW 8-32X7/8 PH FL ROLO
19	<a href="#">2A-32806</a>	2	COVER PIVOT BRKT TUMBLED
20	<a href="#">2C-33890</a>	4	SCREW 12-24X3/4PH PAN ROL
21	<a href="#">WS-50183</a>	2	HINGE BRACKET END

# EXPLODED VIEW : F68 FRY HEAD COMPONENTS

## F68 COUNTERTOP DUAL-HEAD AUTOLIFT FRYER - FRY HEAD COMPONENTS

NOTE: F68 Fryer has two identical fryer heads. Only one is shown.



Model: F68 COUNTERTOP SINGLE-HEAD AUTOLIFT FRYER  
FRY HEAD COMPONENTS

PL302



IL1783 Rev. A 5/22/09

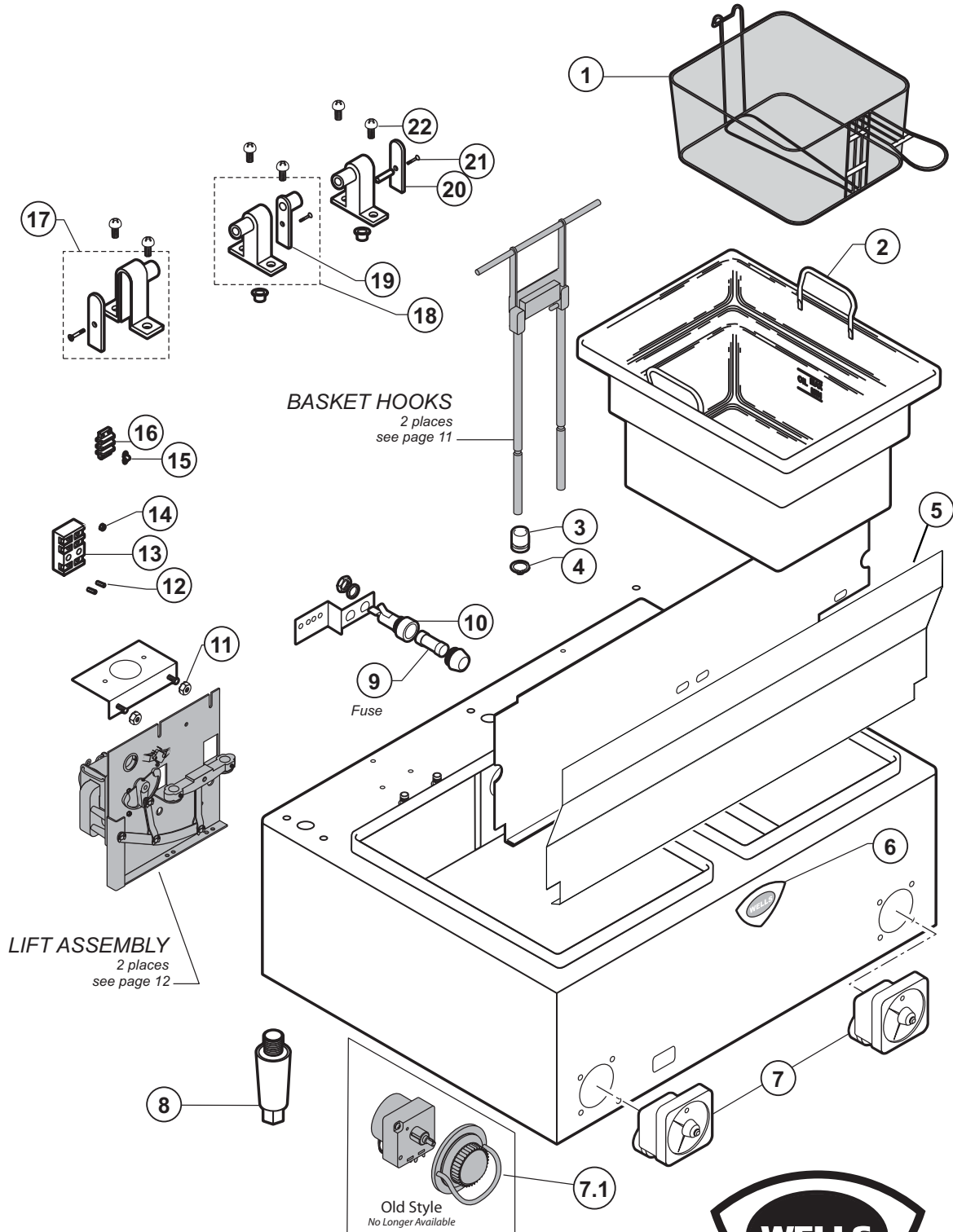
M302 p/n 2M-307589 Owners Manual Electric Countertop Autolift Fryers

**PARTS LIST : F68 FRY HEAD COMPONENTS**

<b>F68 COUNTERTOP SINGLE-HEAD ELECTRIC FRYER\ FRY HEAD COMPONENTS</b>			
<b>Fig No</b>	<b>Part No</b>	<b>Qty</b>	<b>Description</b>
1	<a href="#">WS-62919</a>	2	HEAD ASSY F68 208V
	<a href="#">WS-62920</a>		HEAD ASSY F68 208/240V
2	<a href="#">2R-34066</a>	2	KNOB CONTROL ASSY
3	WS-50133	2	THERMO FRYER CONTROL
4	<a href="#">2C-43665</a>	4	CLAMP THERMO BULB
5	<a href="#">2C-30157</a>	12	CLIP CAPILLARY
6	<a href="#">2N-42892UL</a>	2	ELEM 240V 4600W
	<a href="#">2N-42891UL</a>		ELEM 208V 4600W
7	<a href="#">2P-32428</a>	2	SPRING SUPPORT ROD
8	<a href="#">2A-32427</a>	2	ROD SUPPORT SHORT HEAD
9	<a href="#">2P-34452</a>	2	CAP PUSH ON TYPE BASKET
10	<a href="#">2K-33358</a>	2	ADAPTER HANDLE
11	<a href="#">2R-30211</a>	2	HANDLE LIFT GRAY
12	2C-55566	10	SCREW 6-32X1/4 PH TR HD
13	<a href="#">E7-34323</a>	2	COVER CONTROL BOX
14	<a href="#">2I-35747</a>	2	GASKET DRWR RWS CLOSED
15	<a href="#">E7-30464</a>	2	BOX CONTROL ASSY
16	<a href="#">2C-49689</a>	4	CLAMP BULB SS
17	<a href="#">WS-58656</a>	2	THERMO HI-LIMIT MAN RESET
18	<a href="#">2J-31157</a>	2	LIGHT SIGNAL RED
19	<a href="#">2J-30516</a>	2	LIGHT SIGNAL AMBER
20	<a href="#">2C-30172</a>	4	NUT 7/8-14 HEX
21	<a href="#">2C-30176</a>	4	WASHER LOCK FTG TUBE
22	2I-Z12344	4	GASKET -FIBER WASHER

# EXPLODED VIEW: F68 CABINET COMPONENTS

## F68 COUNTERTOP DUAL-HEAD AUTOLIFT FRYER - CABINET COMPONENTS



Model: F68 COUNTERTOP SINGLE-HEAD AUTOLIFT FRYER  
FRY HEAD COMPONENTS

PL302

IL1784 Rev. C 5/03/13

M302 p/n 2M-307589 Owners Manual Electric Countertop Autolift Fryers



## PARTS LIST: F68 CABINET COMPONENTS

F68 COUNTERTOP SINGLE-HEAD ELECTRIC FRYER\ CABINET COMPONENTS			
Fig No	Part No	Qty	Description
1	2B-43688	4	BASKET WIRE, TWIN
	2B-43689	2	BASKET WIRE, FULL SIZE
2	2D-301344	2	POT ASSY - F SERIES FRYER
3	2I-30231	4	SEAL OIL PTFE LARGE
4	2I-31145	4	RETAINER OIL SEAL
5	E7-31191	1	BAFFLE FR COVER F8854 ROH
6	2M-300534	1	TRADEMARK DOMED LABEL
7	PS-WL0157	1 TIMER	TIMER RETROFIT KIT 48469
	PS-WL0155	2 TIMERS	
	2P-Z13854	2	TIMER 40MIN 240V DPST, MFG AFTR 10/2010
7.1	PS-WL0156	1 TIMER	TIMER RETROFIT KIT 30227
	PS-WL0155	2 TIMERS	
8	2R-Y5092	4	FEET ADJ 4GRAY 3/8-16, PLASTIC
	2A-Z0314		FEET ADJ METAL 4IN
9	2E-34768	2	FUSE SC-10 10A 300V
10	2E-34769	2	FUSEHLDR HPG-EE 10A 240V
11	2C-31053	2	NUT 8-32 KEPS MS NICKEL
12	2C-41974	2	NUT 8-32 HEX 7/8 LONG ALU
13	WS-50131	1	TERM BLOCK KIT, 3POLE .85AMP
14	2C-35736	1	NUT 8-32 HEX KEPS MS GREEN
15	2E-34005	1	JUMPER FLAME SENSOR TERM
16	2E-33068	1	TERM BLOCK, 2-POLE
17	WS-50183	2	HINGE BRACKET END
18	WS-53895	1	CENTER PIVOT BRKT
19	H6-33245	1	COVER PIVOT DBL TUMBLE
20	2A-32806	2	COVER PIVOT BRKT
21	2C-31717	3	SCREW 8-32X7/8 PH FL
22	2C-33890	6	SCREW 12-24X3/4PH PAN

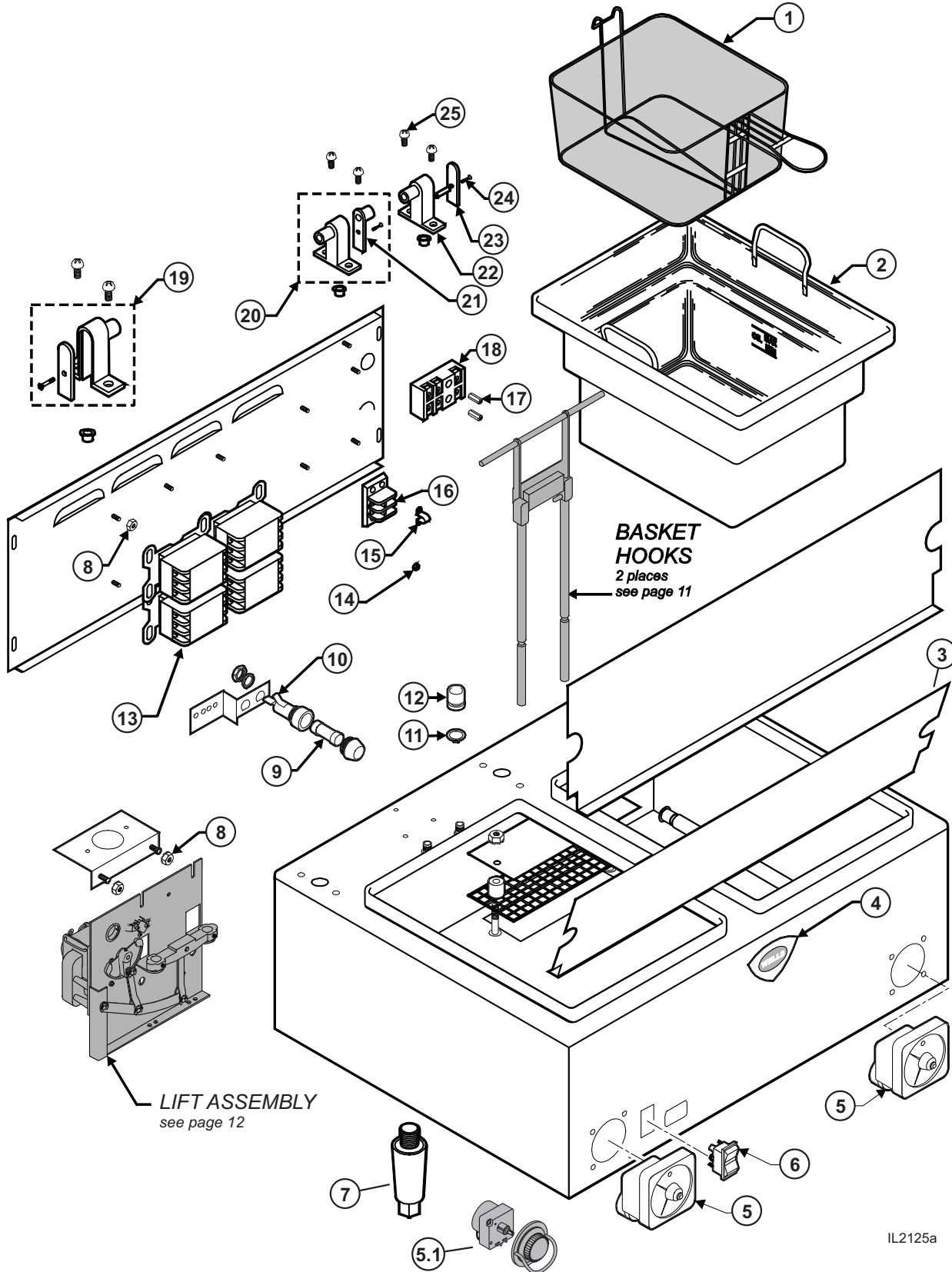


**F88 COUNTERTOP SINGLE-HEAD ELECTRIC FRYER\  
FRY HEAD COMPONENTS**

Fig No	Part No	Qty	Description
1	<a href="#">WS-62926</a>	2	HEAD ASSY F88-6 208V STS
	<a href="#">WS-62927</a>	2	HEAD ASSY F88-6 240V STS
2	<a href="#">2R-37882</a>	2	KNOB CONTROL ASSY AUTOFRY
3	<a href="#">WS-55510</a>	2	THERMO CTRL FRYER
4	<a href="#">2C-30157</a>	12	CLIP CAPILLARY
5	<a href="#">2C-49689</a>	8	CLAMP BULB SS
6	<a href="#">2N-42842UL</a>	2	ELEM 208V 5750W
	<a href="#">2N-42866UL</a>	2	ELEM 240V 5750W
7	<a href="#">2P-32428</a>	2	SPRING SUPPORT ROD
8	<a href="#">2P-34452</a>	2	CAP PUSH ON TYPE BASKET
9	<a href="#">2K-33358</a>	2	ADAPTER HANDLE
10	<a href="#">2R-30211</a>	2	HANDLE LIFT GRAY
11	<a href="#">2C-35566</a>	10	SCREW 6-32X1/4 PH TR HD
12	<a href="#">E7-35028</a>	2	COVER CONTROL BOX WO/SAF
13	<a href="#">2I-35747</a>	2	GASKET DRWR RWS CLOSED CE
14	<a href="#">2A-32427</a>	2	ROD SUPPORT SHORT HEAD
15	<a href="#">E7-30464</a>	2	BOX CONTROL ASSY
16	<a href="#">WS-58656</a>	2	THERMO HI-LIMIT MAN RESET
17	<a href="#">2J-31157</a>	2	LIGHT SIGNAL RED
18	<a href="#">2J-30516</a>	2	LIGHT SIGNAL AMBER
19	<a href="#">2C-30172</a>	4	NUT 7/8-14 HEX
20	<a href="#">2C-30176</a>	4	WASHER LOCK FTG TUBE
21	<a href="#">2I-Z12311</a>	4	GASKET -FIBER WASHER

# EXPLODED VIEW & PARTS LIST

## F88 COUNTERTOP DUAL-HEAD AUTOLIFT FRYER - CABINET COMPONENTS



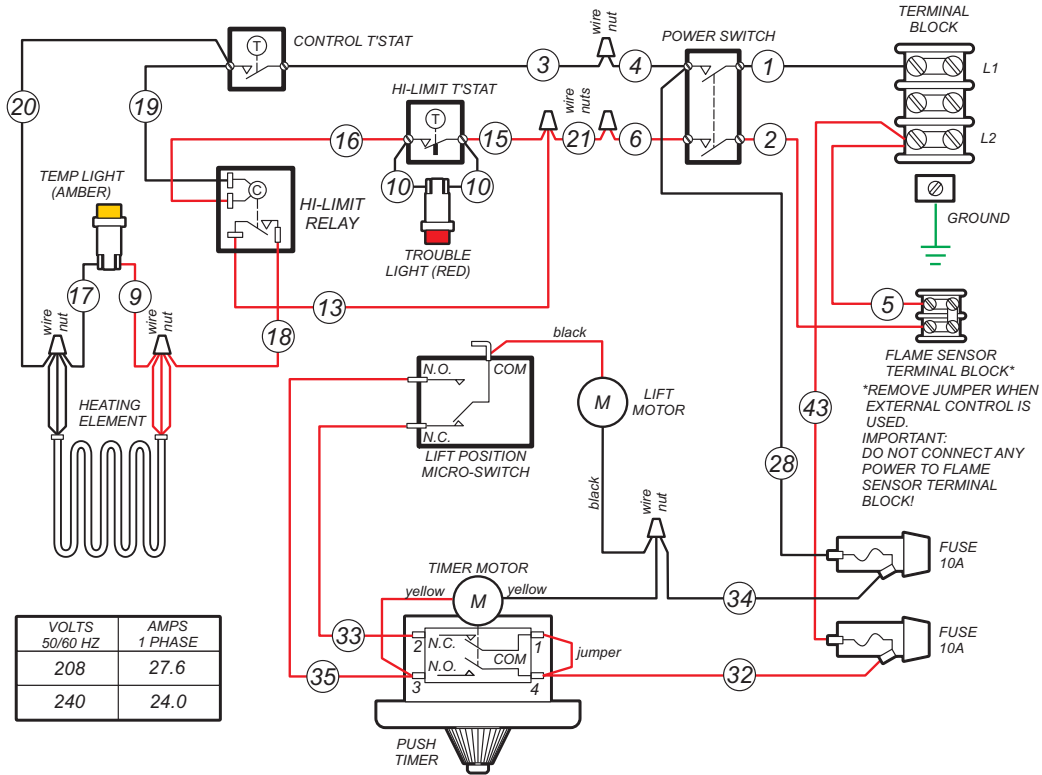
M302 p/n 2M-307589 Owners Manual Electric Countertop Autolift Fryers

IL2125a

**F88 COUNTERTOP SINGLE-HEAD ELECTRIC FRYER\  
CABINET COMPONENTS**

Fig No	Part No	Qty	Description
1	<a href="#">2B-43688</a>	4	BASKET WIRE TWIN
1	<a href="#">5E-20162</a>	2	BASLET FULL SIZE
2	<a href="#">5E-20169</a>	2	POT 15LB CAP
3	<a href="#">E7-31191</a>	1	BAFFLE FR COVER F8854 ROH
4	<a href="#">2M-300534</a>	1	TRADEMARK DOMED LABEL WARR
5	<a href="#">PS-WL0157</a>	1 TIMER	TIMER RETROFIT KIT 48469
	<a href="#">PS-WL0155</a>	2 TIMERS	
	<a href="#">2P-Z13854</a>	2	TIMER 40 MIN 240V DPST
5.1	<a href="#">PS-WL0156</a>	1 TIMER	TIMER RETROFIT KIT 30227
	<a href="#">PS-WL0150</a>	2 TIMERS	
6	<a href="#">2E-35127</a>	1	SWITCH RKR PLSTC, AMBER LT
7	<a href="#">5D-20314</a>	1 SET	LEG 4IN SET-4
	<a href="#">5D-20563</a>		LEG 4IN METAL SET OF 4
8	<a href="#">2C-31053</a>	AR	NUT 8-32 KEPS MS NICKEL
9	<a href="#">2E-34768</a>	2	FUSE SC-10 10A 300V
10	<a href="#">2E-34769</a>	2	FUSEHOLDER HPA-EE 10A 240
11	<a href="#">2I-31145</a>	4	RETAINER OIL SEAL
12	<a href="#">2I-30231</a>	4	SEAL OIL PTFE LARGE
13	<a href="#">2E-Z14960</a>	4	CONTACTOR 40A, REPLACES <a href="#">2E-37779</a> & <a href="#">2E-37780</a>
14	<a href="#">2C-35736</a>	1	NUT 8-32 HEX
15	<a href="#">2E-34005</a>	1	JUMPER FLAME SENSOR TERM
16	<a href="#">2E-33068</a>	1	TERM BLOCK FLAME SENSOR
17	<a href="#">2C-41974</a>	2	NUT 8-32 HEX 7/8 LONG ALU
18	<a href="#">WS-50131</a>	1	TERM BLK KIT-3 POLE .85AMP
19	<a href="#">WS-50183</a>	1	HINGE BRACKET END
20	<a href="#">WS-53895</a>	1	CTR PBT BRKT
21	<a href="#">H6-33245</a>	1	COVER PIVOT DBL TUMBLED DE
22	<a href="#">WS-50183</a>	1	HINGE BRACKET END
23	<a href="#">2A-32806</a>	1	COVER PIVOT BRKT TUMBLED
24	<a href="#">2C-31717</a>	AR	SCREW 8-32X7/8 PH FL ROLO
25	<a href="#">2C-33890</a>	6	SCREW 12-24X3/4PH PAN ROL

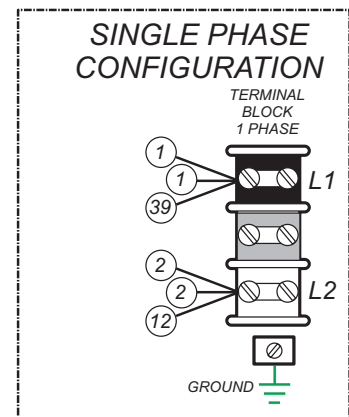
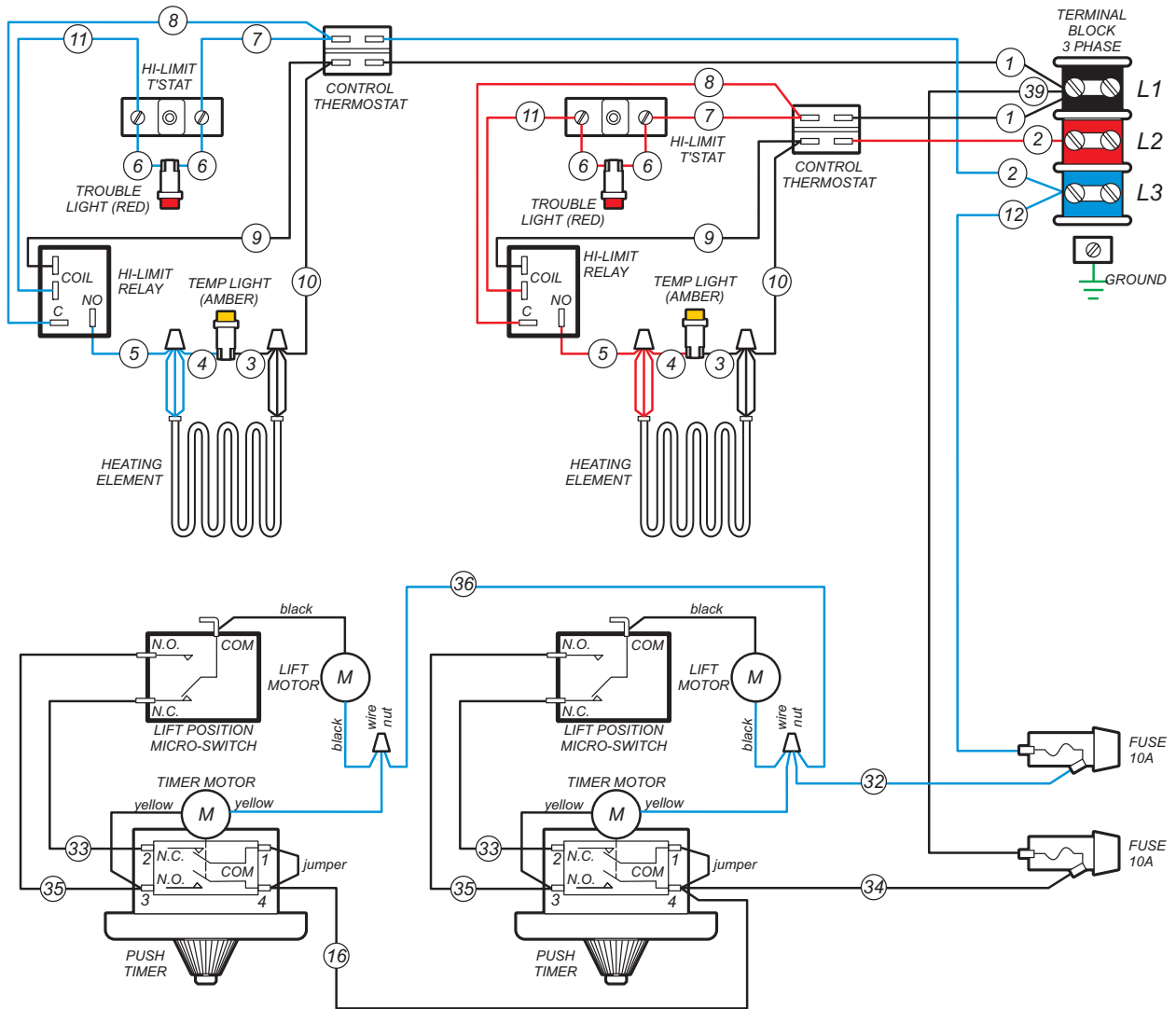
# WIRING DIAGRAM



VOLTS	AMPS
50/60 HZ	1 PHASE
208	27.6
240	24.0

WIRING DIAGRAM F-58(6) p/n 307300

# WIRING DIAGRAM

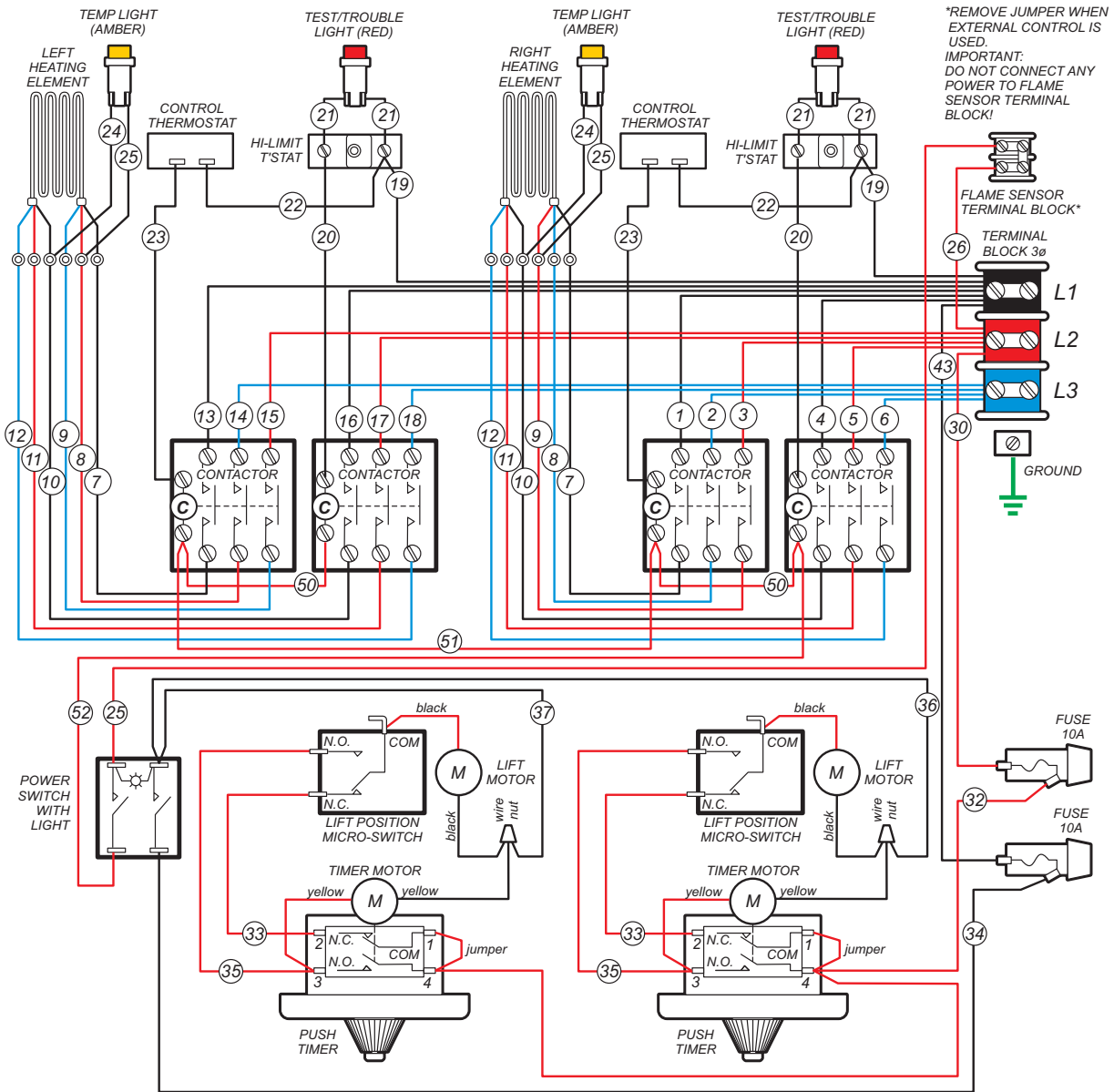


VOLTS 50/60 HZ	AMPS - 3 PHASE			AMPS 1 PHASE	
	L1	L2	L3		
280/240	208	28.8	16.6	16.6	33.2
	240	33.2	19.2	19.2	38.3
208		38.3	22.1	22.1	44.2

WIRING DIAGRAM F-68(6) p/n 307304

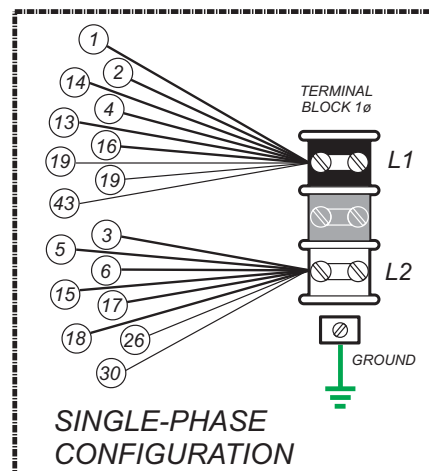
M302 p/n 2M-307589 Owners Manual Electric Countertop Autolift Fryers

# WIRING DIAGRAM



VOLTS 50/60 HZ	3 PHASE AMPS PER LEG			1 PHASE AMPS
	L1	L2	L3	
208	31.9	31.9	31.9	—
240	27.6	27.6	27.6	47.9

WIRING DIAGRAM F-88(6) p/n 307501



M302 p/n 2M-307589 Owners Manual Electric Countertop AutoLift Fryers

**DESCRIPTION**

**PART NO.**

FRY BASKET, HALF-SIZE  
 FRY BASKET, FULL SIZE  
 FRYPOT  
 CRUMB CRADLE  
 COVER, FRYPOT  
 LEGS, ADJUSTABLE (Set of 4)

2B-43688  
 2B-43689  
 2D-301344  
 WS-20690  
 E7-34421  
 5D-20563

**IMPORTANT: Use only factory authorized service parts and replacement filters.**

For factory authorized service, or to order factory authorized replacement parts, contact your Wells authorized service agency, or call:

**Wells Bloomfield, LLC**

10 Sunnen Dr.  
 St. Louis MO 63143 USA

**Service Dept.**

phone: (314) 678-6314  
 fax: (314) 781-2714

Service Parts Department can supply you with the name and telephone number of the **WELLS AUTHORIZED SERVICE AGENCY** nearest you.

**CUSTOMER SERVICE DATA**

please have this information available if calling for service

RESTAURANT \_\_\_\_\_ LOCATION \_\_\_\_\_  
 INSTALLATION DATE \_\_\_\_\_ TECHNICIAN \_\_\_\_\_  
 SERVICE COMPANY \_\_\_\_\_  
 ADDRESS \_\_\_\_\_ STATE \_\_\_\_\_ ZIP \_\_\_\_\_  
 TELEPHONE NUMBER (\_\_\_\_) \_\_\_\_\_ - \_\_\_\_\_

EQUIPMENT MODEL NO. \_\_\_\_\_  
 EQUIPMENT SERIAL NO. \_\_\_\_\_

VOLTAGE:             208       240       1Ø       3Ø



Wells Bloomfield proudly supports CFESA  
Commercial Food Equipment Service Association

**SERVICE TRAINING - QUALITY SERVICE**



**CUSTOMER SATISFACTION**



**WELLS BLOOMFIELD, LLC**  
10 Sunnen Dr., St. Louis, MO 63143  
telephone: 314-678-6314  
fax: 314-781-2714  
[www.wellsbloomfield.com](http://www.wellsbloomfield.com)