



**WELLS MANUFACTURING**  
265 Hobson Street, Smithville, Tennessee 37166  
telephone: 314-678-6314  
fax: 314-781-2714  
[www.wells-mfg.com](http://www.wells-mfg.com)

591

## OWNERS MANUAL

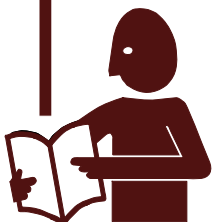
### HYDRO-SURGE BUILT-IN POT WASHER

### MODEL PW106



PW106

Includes  
**INSTALLATION  
USE & CARE  
EXPLODED VIEW  
PARTS LIST  
WIRING DIAGRAM**



#### **IMPORTANT: DO NOT DISCARD THIS MANUAL**

This manual is considered to be part of the appliance and is to be given to the OWNER or MANAGER of the restaurant, or to the person responsible for TRAINING OPERATORS of this appliance. Additional manuals are available from your WELLS DEALER.

**THIS MANUAL MUST BE READ AND UNDERSTOOD BY ALL PERSONS USING OR INSTALLING THIS APPLIANCE.** Contact your WELLS DEALER if you have any questions concerning installation, operation or maintenance of this equipment.

## LIMITED EQUIPMENT WARRANTY

Wells Manufacturing warranties new products to be free from defects in material and/or workmanship for a period of one [1] year from the date of original installation, except as noted below. Defects that occur as a result of normal use, within the time period and limitations defined in this warranty, will at Wells' discretion have the parts replaced or repaired by Wells or a Wells-authorized service agency.

### THIS WARRANTY IS SUBJECT TO ALL LISTED CONDITIONS.

Repairs performed under this warranty are to be performed by a Wells-authorized service agency. Wells will not be responsible for charges incurred or service performed by non-authorized repair agencies.

In all cases, the nearest Wells-authorized service agency must be used.

Wells will be responsible for normal labor charges incurred in the repair or replacement of a warrantied product within 50 miles (80.5 km) of an authorized service agency. Time and expense charges for anything beyond that distance will be the responsibility of the owner. All labor will need to be performed during regular service hours. Any overtime premium will be charged to the owner. For all shipments outside the U.S.A. and Canada, please see the International Warranty for specific details.

It is the responsibility of the owner to inspect and report any shipping damage claims, hidden or otherwise, promptly following delivery.

No mileage or travel charges will be honored on any equipment that is deemed portable. In general, equipment with a cord and plug weighing less than 50 lb. (22.7 kg) is considered portable and should be taken or shipped to the closest authorized service agency, transportation prepaid.

### CONTACT

Should you require any assistance regarding the operation or maintenance of any Wells equipment; write, phone, fax or email our service department. In all correspondence mention the model number and the serial number of your unit, as well as the voltage or type of gas you are using.

Business hours are 8:00 a.m. to 4:30 p.m. Central Standard Time  
 Telephone 314.678.6314  
 Fax 314.781.2714  
 Email customerservice@star-mfg.com  
 www.wells-mfg.com

## WARRANTY EXCLUSIONS

THE FOLLOWING WILL NOT BE COVERED UNDER WARRANTY.

- Any product which has not been installed, cleaned, maintained, or used in accordance with the directions published in the appropriate installation sheet and/or owner's manual as well as national and local codes, including incorrect gas or electrical connection. Wells is not liable for any unit which has been mishandled, abused, misapplied, subjected to chlorides, harsh chemicals, or caustic cleaners, damaged from exposure to hard water, modified by unauthorized personnel, damaged by flood, fire, or other acts of nature [or God], or which have an altered or missing serial number.
- Installation, labor, and job checkouts, calibration of heat controls, air and gas burner/bypass/pilot adjustments, gas or electrical system checks, voltage and phase conversions, cleaning of equipment, or seasoning of griddle surface.
- Replacement of fuses or resetting of circuit breakers, safety controls, or reset buttons.
- Replacement of broken or damaged glass components, quartz heating elements, and light bulbs.
- Labor charges for all removable parts in gas charbroilers and hotplates, including but not limited to burners, grates, and radiants.
- Any labor charges incurred by delays, waiting time, or operating restrictions that hinder a service technician's ability to perform service.
- Parts that fail or are damaged due to normal wear or labor for replacement of Items that can easily be replaced during a daily cleaning routine. such as but not limited to silicone belts, PTFE non-stick sheets, knobs, control labels, bulbs, fuses, quartz heating elements, baskets, racks, and grease drawers.
- Components that should be replaced when damaged or worn, but have been field-repaired instead [eg. field-welded fry pots].
- Any loss of business or profits.

### ADDITIONAL WARRANTIES

Specialty/chain specific versions may also have additional and/or extended warranties.

PRODUCTS	PARTS	LABOR
universal ventless hoods	2 years	1 year
canopy hoods	2 years	1 year
"Cook'n Hold" equipment [HW10, HWSMP, LLSC7, LLSC7WA, LLSC11, and LLSC11WA]	2 years	1 year
cast iron grates, burners, and burner shields	1 year	
original Wells parts sold to repair Wells equipment	90 days	
Service First	1 year	

## TABLE OF CONTENTS

WARRANTY	1
SPECIFICATIONS	1
FEATURES & OPERATING CONTROLS	2
PRECAUTIONS & GENERAL INFORMATION	3
AGENCY LISTING INFORMATION	3
INSTALLATION	4
OPERATION	5
CLEANING INSTRUCTIONS	6
TROUBLESHOOTING SUGGESTIONS	7
EXPLODED VIEW & PARTS LIST	8-9
WIRING DIAGRAM	9
PARTS & SERVICE	13
CUSTOMER SERVICE DATA	13

## INTRODUCTION

Thank You for purchasing this Wells Manufacturing appliance.

Proper installation, professional operation and consistent maintenance of this appliance will ensure that it gives you the very best performance and a long, economical service life.

This manual contains the information needed to properly install this appliance, and to use and care for the appliance in a manner which will ensure its optimum performance.

## SPECIFICATIONS

* MODEL	VOLTS	CYCLES	MOTOR HP	AMPS	POWER SUPPLY CORD
	1 $\emptyset$				
PW106 -120*	120 VAC	60 Hz	1/3	6.0	NEMA 5-15P
PW106-UK60	220/230/240VAC**			3.0	BS-1363
PW106-UK50	220/230/240VAC**	50 Hz	1/3	3.0	BS-1363
PW106-EU50	220/230/240VAC**	50Hz	1/3	3.0	CEE 7/7

120VAC 60Hz unit may be converted to 240VAC 60Hz by reconfiguring motor wiring and replacing power supply cord. Note: This conversion is not UL Listed.

\*\* Export unit only, this model is not UL listed.

## FEATURES & OPERATING CONTROLS

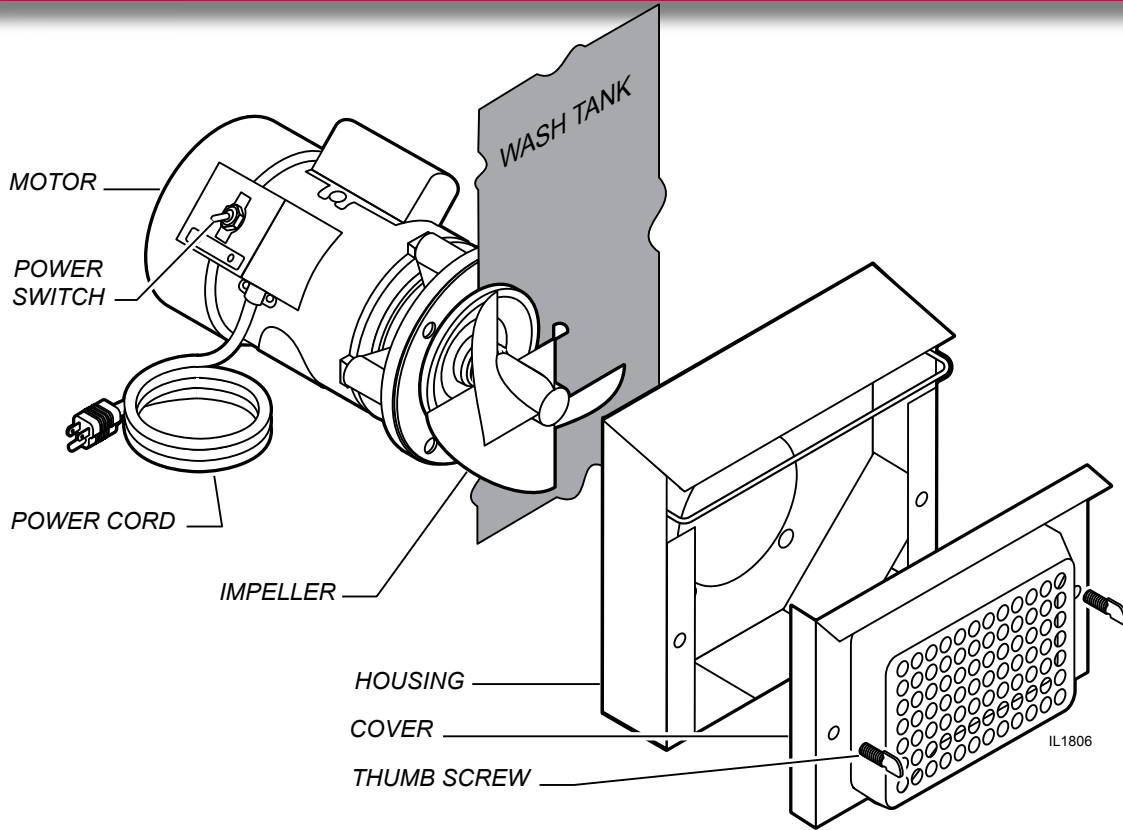


Fig. 1 Features and Operating Controls

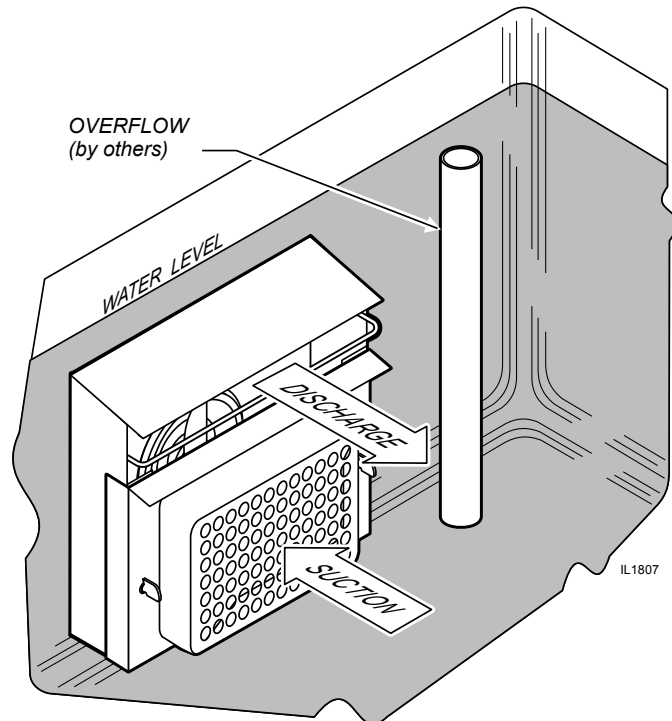


Fig. 2 PW-106 Operation

## PRECAUTIONS AND GENERAL INFORMATION

This appliance is intended for use in commercial establishments only.

This appliance is intended to assist in cleaning cooking utensils. No other use is recommended or authorized by the manufacturer or its agents.

Operators of this appliance must be familiar with the appliance use, limitations and associated restrictions. Operating instructions must be read and understood by all persons using or installing this appliance.

Cleanliness of this appliance is essential to good sanitation. Read and follow all included cleaning instructions and schedules to ensure the safety of the food product.

Disconnect this appliance from electrical power before performing any maintenance or servicing.

Exposed surfaces of this appliance can be hot to the touch and may cause burns.

Impeller blades are sharp:

DO NOT operate the unit unless the cover is properly installed.  
Use care when cleaning the impeller.

The technical content of this manual, including any wiring diagrams, schematics, parts breakdown illustrations and/or adjustment procedures, is intended for use by qualified technical personnel.

Any procedure which requires the use of tools must be performed by a qualified technician.

This manual is considered to be a permanent part of the appliance.

This manual and all supplied instructions, diagrams, schematics, parts breakdown illustrations, notices and labels must remain with the appliance if it is sold or moved to another location.

This appliance is made in the USA. Unless otherwise noted, this appliance has American sizes on all hardware.



### WARNING: ELECTRIC SHOCK HAZARD

All servicing requiring access to non-insulated electrical components must be performed by a factory authorized technician.

DO NOT open any access panel which requires the use of tools. Failure to follow this warning can result in severe electrical shock.



### CAUTION: RISK OF DAMAGE

DO NOT connect or energize this appliance until all installation instructions are read and followed. Damage to the appliance will result if these instructions are not followed.




### CAUTION: CUT HAZARD

Impeller blades are sharp. DO NOT operate the unit unless the cover is properly installed.

Use care when cleaning the impeller.

## AGENCY LISTING INFORMATION

This appliance is  Listed under UL File E27255 for 120VAC 60Hz only.



E27255

## INSTALLATION

**NOTE:** DO NOT discard the carton or other packing materials until you have inspected the appliance for hidden damage and tested it for proper operation. Refer to *SHIPPING DAMAGE CLAIM PROCEDURE* on the inside front cover of this manual.



### **WARNING: RISK OF INJURY**

Installation procedures must be performed by a qualified technician with full knowledge of all applicable electrical and plumbing codes. Failure can result in personal injury and property damage.

### **IMPORTANT:**

This appliance must be plugged into a properly grounded receptacle. Contact a licensed electrician to install and connect a proper receptacle.

### **IMPORTANT:**

Damage due to being connected to the wrong voltage or phase is NOT covered by warranty.

### **IMPORTANT:**

**DO NOT** run Hydro-Surge dry. Operating the unit dry will damage the seals and allow it to leak.

### **UNPACKING & INSPECTION**

Carefully remove the appliance from the carton. Remove all protective plastic film, packing materials and accessories from the Appliance before connecting electrical power or otherwise performing any installation procedure.

Carefully read all instructions in this manual and the Installation Instruction Sheet packed with the appliance before starting any installation.

Read and understand all labels and diagrams attached to the appliance.

Carefully account for all components and accessories before discarding packing materials. Store all accessories in a convenient place for later use.

### **COMPONENTS**

1 ea	MOTOR ASSEMBLY
1 ea	GASKET, TANK TO MOUNTING PLATE
1 ea	PUMP HOUSING ASSEMBLY
1 ea	COVER
	HARDWARE and LITERATURE

### **INSTALLATION**

**IMPORTANT:** Layout, installation and any conversion to be performed by a qualified service technician only.

Layout mounting holes per Installation Instruction. After completing cutout operations, carefully deburr all holes.

**NOTE:** Hydro-Surge unit is designed to mount on the LEFT side of the wash tank. If mounting to the right side:

- Rotate motor until switch is accessible from the front.
- Remove and reinstall motor connector box cover so that switch markings are right-side-up.

**NOTE:** The 120 volt Hydro-Surge part no. 20621 is shipped from the factory wired for 120 volts AC, 60 Hz. If unit is to be used for 240 volts:

- Purchase part no. 2E-35540 240 VAC power cord.
- Reconfigure motor wiring connections per motor label as required for 240 VAC.
- Install 240VAC power cord. Be sure to tighten strain relief.

**IMPORTANT:** 240V conversion is not UL Listed.

Apply a thin bead of food-grade silicone sealant to one face of the gasket, then apply gasket to the mounting plate of the motor assembly.

Apply a thin bead of food-grade silicone sealant to the exposed face of the gasket, then assemble the motor and pump housing to the wash tank. Test impeller to be sure it rotates without contacting the pump housing. Adjust as necessary. Bolts need be only tight enough to prevent leaks. Over-tightening is not necessary. Install the cover. Thumbscrews need only be finger-tight.

Fill wash tank. Plug unit into a appropriate receptacle and test for proper operation.

**OPERATION**

Place items to be washed in the wash tank

Fill wash tank to a depth of 10", or up to the level of the overflow, with hot tap water.

**NOTE:** If using a detergent, a low-foaming detergent is recommended.

Turn the power switch ON. Allow the unit to operate as long as necessary to remove food particles.

Hydro-Surge cleans by the scrubbing action of fast-moving water. If cleaning a large number of items, rotate the items frequently so that each spends some time nearest the Hydro-Surge discharge.

**SUGGESTIONS**

Inspect each item for thorough cleaning. Additional hand cleaning may be necessary to insure complete food removal.

If detergent is used, items must be rinsed with clean water prior to use.

**CAUTION:  
CUT HAZARD**

Impeller blades are sharp. DO NOT operate the unit unless the cover is properly installed.

**IMPORTANT:**

**DO NOT** run Hydro-Surge dry. Operating the unit dry will damage the seals and allow it to leak.

## CLEANING INSTRUCTIONS



### CAUTION: CUT HAZARD

Turn power switch OFF and disconnect unit from electric power before cleaning.



### CAUTION: CUT HAZARD

Impeller blades are sharp. DO NOT operate the unit unless the cover is properly installed.

Use care when cleaning the impeller.



### CAUTION: POWER WASHING

DO NOT expose the motor to any amount of water. Doing so can damage the unit and is not covered under warranty.

### PREPARATION

Turn power switch OFF  
Unplug from electrical power  
Drain wash tank

### FREQUENCY

Daily, or as needed

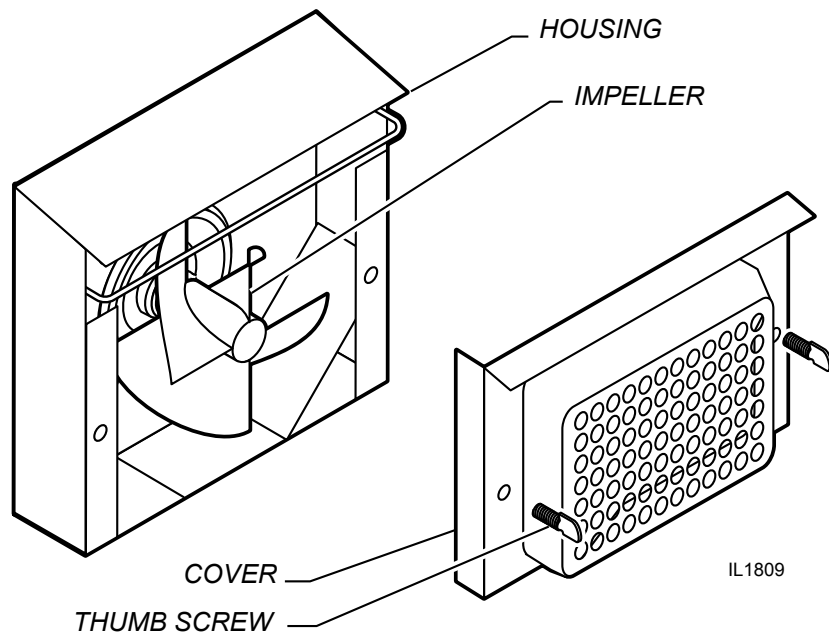
### TOOLS

Bottle Brush, Soft Bristle Brush  
Soft Cloth or Sponge

### CLEANING

1. Turn power switch OFF and unplug unit. Drain wash tank.
2. Remove cover. Store thumb screws for later use.
3. Using brushes, clean in, around and behind impeller. Remove any mop strings or other fibers from impeller shaft.
4. Clean all accessible areas of the pump housing.
5. Check impeller for free rotation. Reassemble cover.
6. Wipe motor, power switch and power cord with a soft cloth dampened with clean water.
7. Plug unit into receptacle.

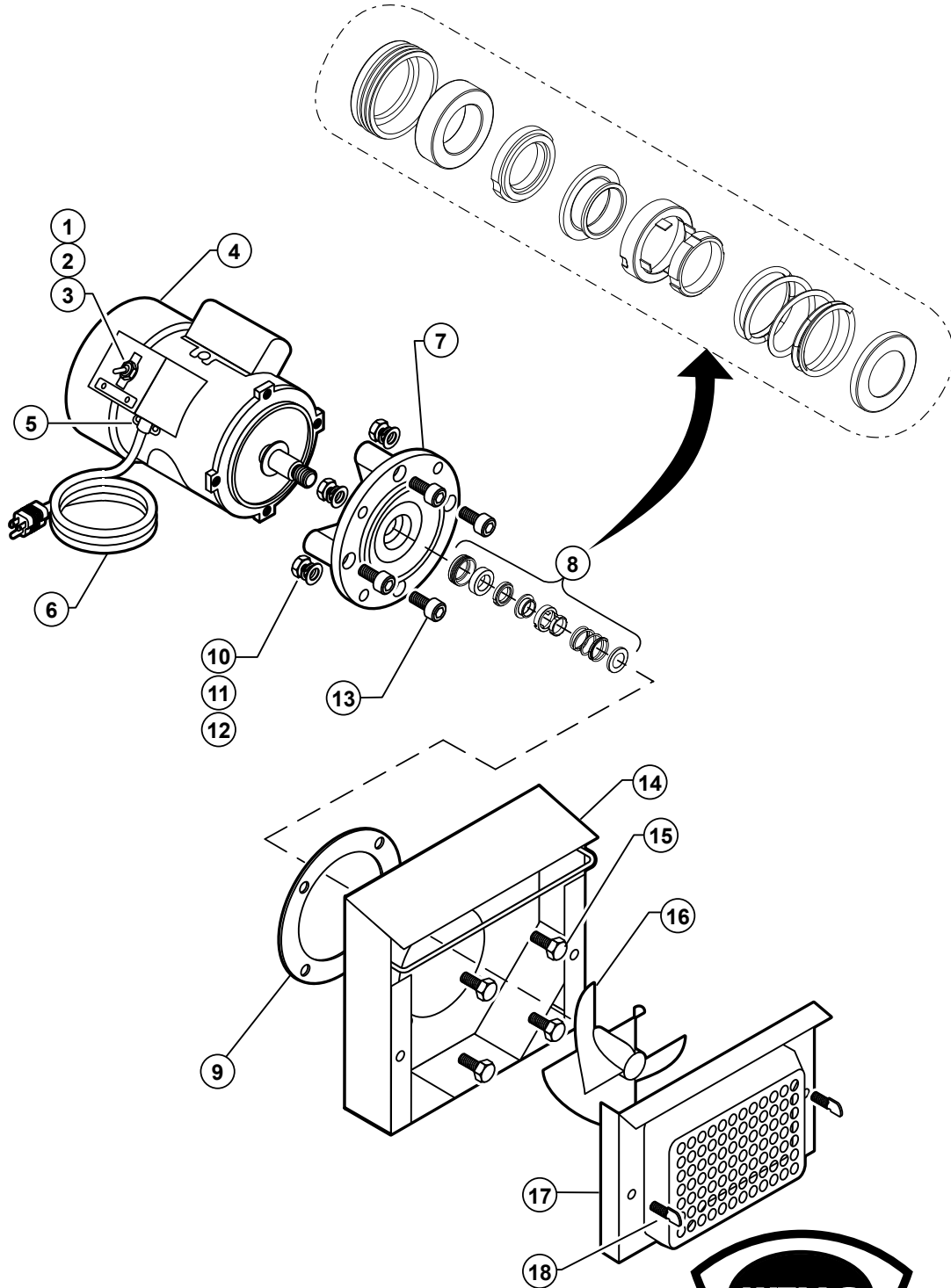
Procedure is complete.



## TROUBLESHOOTING SUGGESTIONS

SYMPTOM	PROBABLE CAUSE	SUGGESTED REMEDY
No power to unit	Unit unplugged or circuit breaker tripped	Plug unit into appropriate receptacle
		Reset circuit breaker
Unit will not run	Power switch off	Turn switch ON
	Internal overload tripped	Allow motor to cool
	Damaged power cord	Replace power cord
	Damaged power switch	Replace switch
	Damaged motor	Replace motor
Trips internal overload	Impeller jammed	Clean impeller. Be sure impeller is not binding on pump housing.
	Impeller damaged	Replace impeller
	Motor improperly wired	Motor must be wired per the attached label for the electrical supply voltage.
	Mounting plate-to-motor screws loose	Tighten mounting plate screws
	Damaged motor	Replace motor
Leaks at pump shaft	Damaged pump seal	Replace seal
Leaks at mounting	Mount bolts loose	Tighten mounting bolts
	Gasket damaged	Replace gasket.

# EXPLODED VIEW: PW106



Model: PW106  
Built-In Electric Pot Washer

PL591

IL1805 Rev. B 4/01/10

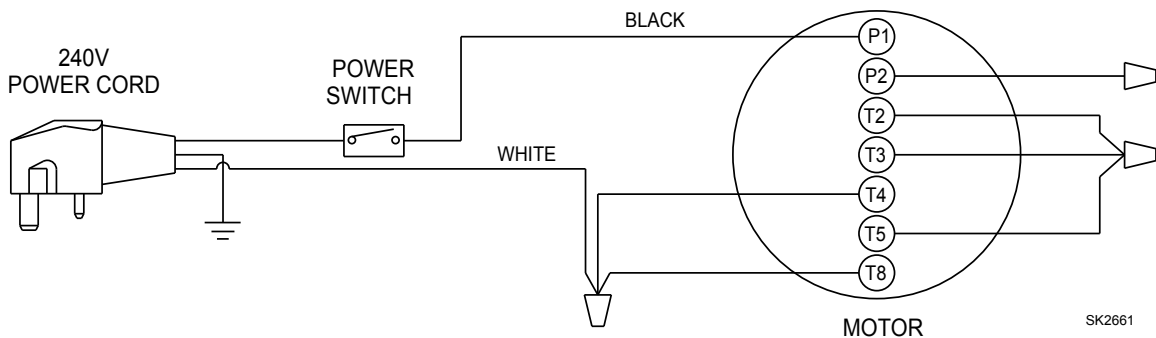
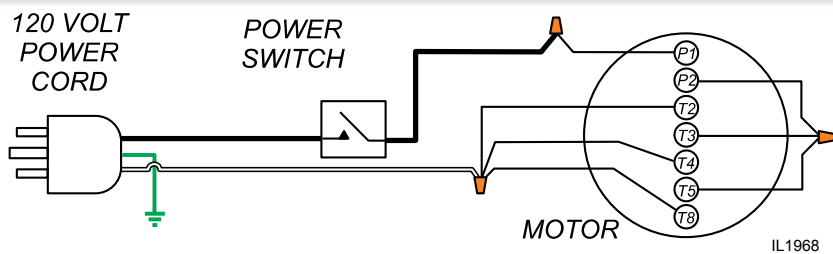


## PARTS LIST: PW106

Fig No	Part No	Qty	Description
1	2E-30303-15	1	BOOT THREADED BLACK
2	2E-33192	1	PANEL ON & OFF SWITCH
3	2E-35900	1	SWITCH ON OFF
4	2U-35896	1	MOTOR 1/3HP 120V PW-1
	2U-Z17110		MOTOR PW106 220V 50HZ
5	2K-31200-01	1	BOX CONNECTOR 3/8
6	2E-35539	1	CORD 125V 15A 5-15P 16/3
	2E-35540		CORDSET 240V BAKERS
7	K3-35897	1	PLATE MTG MACH PW-1
8	2I-35902	1	SEAL PUMP PW-1
9	L2-35899	1	GASKET TANK TO MTG PLATE
10	2C-37497	4	NUT 3/8 HEX MS FINISH
11	2C-37500	4	WASHER LOCK 3/8 SPLIT SS
12	2C-37501	4	WASHER FLAT ZI 3/8-1.0-14
13	2C-37499	4	BOLT SOCKET HD 3/8-16X1
14	K3-35906	1	PUMP HOUSING ASSY PW-1
15	2C-37498	4	BOLT HEX 3/8-16X1 SS
16	2B-35898	1	IMPELLER PW1 71949
17	K3-35911	1	COVER PUMP ASSLY PW-1
18	2C-35907	4	SCREW 1/4 20X5/8 SS THUMB

## WIRING DIAGRAM: PW106

120 VAC 60 Hz  
Standard Configuration



**NOTES:**

**NOTES:**

**NOTES:**

**DESCRIPTION**

**PART NO.**


The following parts are available through your Authorized Wells Service Agency:

**SERVICE & REPAIR**

IMPELLER	2B-35898
GASKET, TANK TO MTG PLATE	L2-35899
SEAL, PUMP	2I-35902
PUMP HOUSING	K3-35906
THUMB SCREW	2C-35907
COVER, PUMP	K3-35911

**VOLTAGE CONVERSION**

**IMPORTANT:**

This appliance is  Listed for 120 VAC 60 Hz only.

CORD SET 240 VAC 60 Hz	2E-35540
MOTOR 220 VAC 50 Hz	2U-Z17100

**IMPORTANT:** Use only factory authorized service parts and replacement filters.

For factory authorized service, or to order factory authorized replacement parts, contact your Wells authorized service agency, or call:

**Wells Manufacturing**  
265 Hobson Street  
Smithville, Tennessee 37166 U.S.A.

**Service Dept.**  
phone: (314) 678-6314  
fax: (314) 781-2714

Service Parts Department can supply you with the name and telephone number of the WELLS AUTHORIZED SERVICE AGENCY nearest you.

**CUSTOMER SERVICE DATA**

please have this information available if calling for service

RESTAURANT \_\_\_\_\_ LOCATION \_\_\_\_\_  
 INSTALLATION DATE \_\_\_\_\_ TECHNICIAN \_\_\_\_\_  
 SERVICE COMPANY \_\_\_\_\_  
 ADDRESS \_\_\_\_\_ STATE \_\_\_\_\_ ZIP \_\_\_\_\_  
 TELEPHONE NUMBER (\_\_\_\_) \_\_\_\_\_ - \_\_\_\_\_  
 EQUIPMENT MODEL NO. \_\_\_\_\_  
 EQUIPMENT SERIAL NO. \_\_\_\_\_  
 VOLTAGE: (check one)  120     220     240



Wells Bloomfield proudly supports CFESA  
Commercial Food Equipment Service Association

**SERVICE TRAINING - QUALITY SERVICE**



**CUSTOMER SATISFACTION**



**WELLS MANUFACTURING**

265 Hobson Street, Smithville, Tennessee 37166

telephone: 314-678-6314

fax: 314-781-2714

[www.wells-mfg.com](http://www.wells-mfg.com)