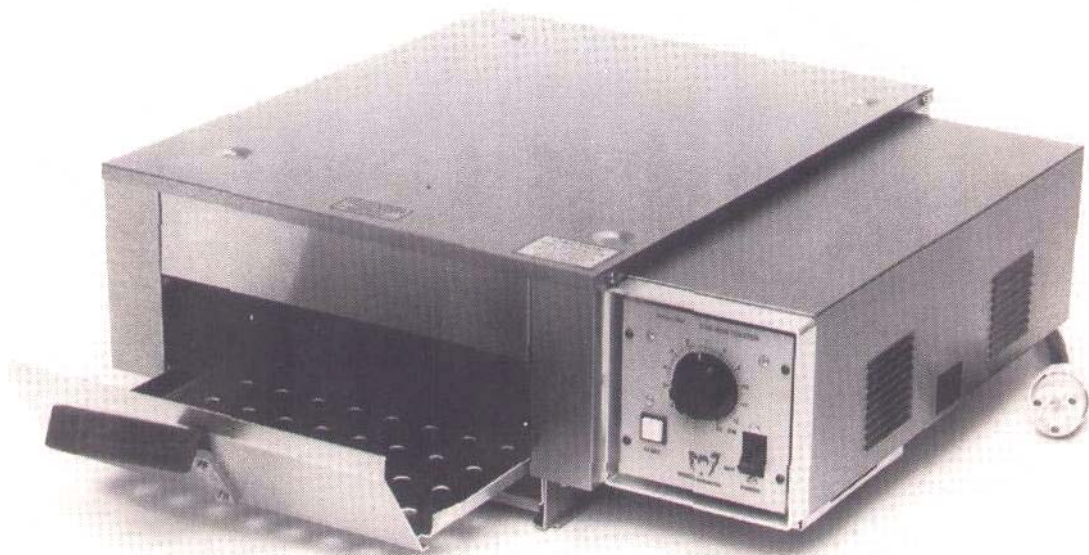


575 EC TOASTER OVEN

575 EC TOASTER OVEN

575 EC TOASTER OVEN

575 EC TOASTER OVEN



An ISO 9001 Company

WISCO INDUSTRIES, INC.

OREGON, WISCONSIN 53575-0010 • TELEPHONE 608-835-3106 • FAX 608-835-7399

LIMITED WARRANTY

All parts are guaranteed to be free of defects in material and workmanship for a period of one year from date of purchase, with the exception of the Infrared Quartz Lamps which are guaranteed for thirty days.

Date of purchase shall be the day of shipment.

Wisco agrees to replace or repair any part which proves defective, without charge for that part, during this one-year period.

Parts will be replaced or repaired, F.O.B. factory, or by an authorized parts and service agency.

During the initial 90-day period of the one-year warranty, Wisco will repair or replace without charge any defective parts, assume expenses incurred to perform the service, including up to a total of 50 miles travel. Travel expenses exceeding the 50 mile total shall be the obligation of the purchaser.

Wisco Industries, Inc. neither assumes nor authorizes any person to assume any other obligation or liability in connection with this equipment.

The above warranty applies only to the original purchaser, providing that the equipment has been properly installed, all parts have been serviced as recommended, and providing the allegedly defective parts, upon examination by Wisco, shall prove to be defective.

This warranty will not apply to any equipment or part thereof which has been subjected to any accident, abuse, misuse, tampering, or service by an unauthorized service agency.

CONTENTS

INTRODUCTION	1
GENERAL	1
MODEL DESCRIPTION	2
Construction	
SPECIFICATIONS	2
Dimensions	
Electrical	
OPERATING INSTRUCTIONS	3-4
Preparation	
Handle Installation	
Lamp Installation	
Power Cord Installation	
GENERAL MAINTENANCE	5
LOCATION AND FUNCTION OF CONTROLS	5
OPERATION	6
TROUBLESHOOTING GUIDE	6
REPLACEMENT PARTS (QUICK REFERENCE)	7
REPLACEMENT INSTRUCTION	8-9
Lamps	
Control Assembly	
Relay	
Fan Motor	
COMPLETE PARTS LIST	10-11
575 EC EXPANDED VIEW DRAWING	12
575 EC WIRING DIAGRAM	13

INTRODUCTION

We congratulate you on your recent selection of the **Wisco Model 575 EC Toaster Oven**. Our organization has tremendous pride in presenting you with a dependable, top quality unit that is designed to provide you with years of reliable service.

GENERAL

The 575 EC offers speed with economy at the touch of a fingertip. Solid state reliability ensures consistent performance with each cycle when preparing items of your choice. The selective cycle setting provides the precise control for preparing the product to your exact specifications.

With capacity for toasting 400 buns per hour, the 575 EC will handle your most demanding needs. With its unique ENERGY SMART circuitry design, energy consumption is minimized until services are required which saves 50-80% more energy than conveyor-type toasters.

As a safety precaution, we recommend all instructions and safety tips appearing in this manual be reviewed prior to operation.

MODEL DESCRIPTION

CONSTRUCTION

Wisco's Toaster Oven is constructed with a 22 gauge brushed stainless steel exterior and an aluminum interior. Specular aluminum reflectors focus the infrared waves to maximize efficiency when toasting or melting cheese.

SPECIFICATIONS

DIMENSIONS

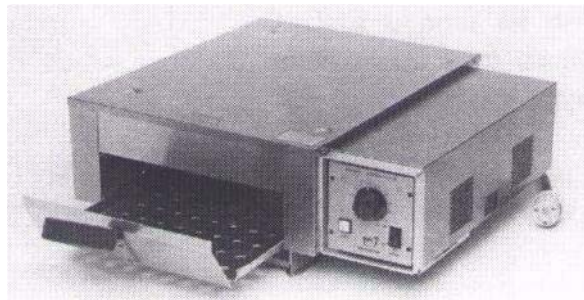


Figure 1. Model 575 EC Toaster Oven

Height: 9 1/4" **Width:** 23 1/2" **Depth:** 22"

Opening height is 3 1/4" for a variety of products

ELECTRICAL

This unit is designed to operate on 208 AC, single phase. It is equipped with a 6 ft. cord and plug that requires a standard NEMA L6-20R or L6-30R receptacle rated 20 A, 250V AC, or 30 A, 250V AC, respectively.

Upon request, NO POWER CORD will accompany the unit for firms that prefer to install their own power cord.

Electical Rating: 208V AC 60 Hz 3200 WATT 15.4 Amp.

OPERATING INSTRUCTIONS

CAUTION: To prevent electrical shock, DO NOT apply power or try to operate toaster until after proper preparation of this unit.

PREPARATION

Prior to operation, you must install the infrared lamps, grill tray handle, cleanout tray knob, and install a power cord (if requested without). The hardware and screws required to complete assembly are attached to the grill tray. The lamps are packaged internally beneath the top of the unit.

HANDLE INSTALLATION

Transfer the handle from the interior of the grill tray to its exterior position. Screws are with handle (see figure 2).

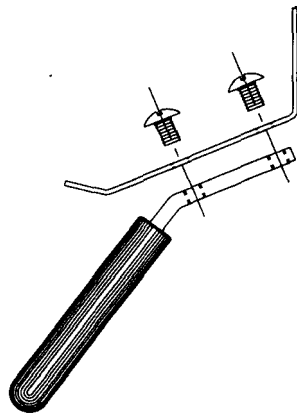


Figure 2. Handle Assembly

LAMP INSTALLATION

CAUTION: DO NOT touch the glass surface when handling the quartz lamps. The oil from your hands creates hot spots that will diminish the life of the lamps. When handling, grip the metal end caps.

1. Remove the top of the unit to access the lamps. Two lamps are required for operation,
2. Remove the inner lid. Avoid handling or bending the specular reflector shield attached to the lid.
3. Install lamps by inserting the metal end caps into the white porcelain insulators, fitting the lamps snugly in place and attaching lead to any terminal on insulator.
4. Replace inner lid. Proper positioning places the air deflector on the side of the fan/control box. Secure at all six points, required screws are in hardware packet.
5. Replace top, required screws are in hardware packet.

POWER CORD INSTALLATION

When installing a unit without a power cord (supplied upon request), we recommend a Type SO or SOW-A, #12 AWG 3-conductor cord, rated 20 amps, 250 volts.

GENERAL MAINTENANCE

Proper maintenance includes regular cleaning. The exterior should be cleaned with glass cleaner or substitute cleaner that is **not** abrasive. DO NOT allow grease or dust particles to accumulate in the louvers. Adequate airflow is essential for proper cooling of the solid state components. The cleanout tray should be removed and cleaned daily. A standard detergent is recommended—dishwasher safe.

If at some point you remove the top lid and there is a buildup of spattered particles on the specular aluminum reflector, DO NOT use a caustic oven cleaner or scratch pad when cleaning. It will damage the reflective finish. General detergents and a soft wipe are recommended.

FUNCTION OF CONTROLS

1. MAIN POWER SWITCH

This switch is used to turn the entering power line on and off.

2. TIMING CONTROL

Use this dial to regulate the length of the toast cycle. Each digit indicates an approximate 10 second cycle. For example, 1 is a 10 second cycle, 2 is a 20 second cycle, 6 is a 60 second cycle.

3. START SWITCH

This momentary contact switch initiates the toast cycle.

OPERATION

To determine the appropriate calibration for your product, begin by setting the timer at 6, which is approximately a 60 second cycle—initiate cycle by pressing toast switch. If a darker finish is desired, advance the control to a higher setting. Reduce the setting for a lighter finish. Cycle times will vary depending on product weight and composition. When melting cheese, begin with a lower setting. At the completion of the toast cycle, remove product. The unit is designed for consecutive cycles as demand requires.

TROUBLESHOOTING GUIDE

When more than one possible cause is listed, check the components in the order provided. The list is arranged from most probable cause to least.

PROBLEM	CAUSE
No power to unit	Unit not plugged in, main power switch in control assembly, relay, thermostat-limiting
No power to lamps	Start button (toastswitch in control assembly), relay, thermostat
No power to lamps after consecutive toast cycles	Blocked air vents, cooling fan, lamp
Uneven toasting	Heat lamp burned out or lamp could be unplugged
No power to unit except fan is on after consecutive cycles	Blocked air vents, thermostat-limiting, connection between fan thermostat and fan, fan motor, fan
No tone at completion of toast cycle	Control assembly
Irregular tone length	Control assembly
Uncontrolled toast cycle	Control assembly

TROUBLESHOOTING GUIDE (continued)

PROBLEM	CAUSE
Lamp does not stay on once started	Lamp, control assembly, unit over heating—check fan motor

REPLACEMENT PARTS LIST

(QUICK REFERENCE)

The following is a quick reference parts list designed for quick access and identification of common components

575 EC PART NO	DESCRIPTION
0017806	Control Panel Assembly
00122	Knob Cleanout Tray
009052SK	Motor
009075	Cooling Fan
009220	Bun Tray
0017899	Thermistor
009181	Handle
009188	Wiring Diagram For E Series
0017898	Power Cord Assembly
009634	Relay
009103	Leg Cap
009757	Leg
009107	Thermostat (Limiting)
009108	Thermostat (Fan)
009218	Cleanout Tray
009973SK	Quartz Lamp (208V)

REPLACEMENT INSTRUCTIONS

LAMPS

1. Disconnect unit from power.
2. Unscrew top panel and remove.
3. Unscrew reflector panel, and remove carefully, so as not to damage the sensor located on top of the reflector panel.
4. Remove lamp and replace with new lamp.
5. Replace reflector panel.
6. Replace top panel.
7. Connect power to unit.

CONTROL ASSEMBLY

1. Disconnect unit from power.
2. Unscrew (3) screws located on the bottom of the unit, and remove access panel.
3. Disconnect wires to the control assembly.
4. Unscrew (4) outside screws on the front of the control assembly.
5. Remove control assembly.
6. Install new control assembly by replacing (4) outside screws.
7. Rewire according to wire diagram (see page 13).
8. Replace access panel and tighten (3) screws.

RELAY

1. Disconnect unit from power.
2. Remove access panel by removing (3) screws located on the bottom of the unit.
3. Disconnect wires to the relay.
4. Unscrew (2) screws located on the back side of the relay. NOTE: DO NOT WIPE AWAY THERMAL GREASE. APPLY ADDITIONAL GREASE IF NECESSARY.
5. Install new relay by replacing (2) screws.
6. Rewire according to wire diagram (see page 13).
7. Replace access panel and tighten (3) screws.

FAN MOTOR

1. Disconnect unit from power.
2. Remove access panel by removing (3) screws located on the bottom of the unit.
3. Disconnect (2) wires leading to the fan motor.
4. Remove fan blade by lifting up on the hub of the fan carefully, so as not to break the blades of the fan.
5. Remove (2) screws on both sides of the motor shaft.
6. Remove fan motor, install new motor, and replace (2) screws on both sides of the motor shaft.
7. Replace fan blade by aligning the flat on the motor shaft with the flat inside hub of the fan blade.
8. Rewire according to the wire diagram (see page 13).
9. Replace access panel and tighten (3) screws.

COMPLETE PARTS LIST

NO	575 EC PART NO	DESCRIPTION
1	009121	#10 Screw
2	009205	Top Panel
3	0017806	Control Assembly
4	0017899	Thermistor Assembly
5	009014	Access Panel
6	009181	Handle and Mounting Bracket
7	009220	Bun Tray
8	00146	Speed Nut
9	90506391	3/8" Nut
10	009218	Cleanout Tray
11	00122	Cleanout Tray Knob
12	009973SK	Quartz Lamp 208V
13	0017898	Power Cord Assembly
14	009004	Venturi Panel
15	009011	Duct Panel
16	009052SK	Fan Motor
17	009075	Fan Blade
18	009022	Venturi
19	009023	Venturi Mounting Bracket
20	009024	Motor Support Bracket
21	009130	Mounting Panel
22	009028	Bushing
23	009129	Lamp Guard
24	009503	Back Panel
25	009510	Back Panel-Control
26	009549	Baffel
27	009070	Rivet
28	009632	Relay Mounting Bracket
29	009634	Solid State Relay
30	009754	Frame
31	009219	Heat Shield
32	009757	Leg
33	009155	1/4-20 Screw
34	009012	Comer Panel
35	009013	Side Panel
36	009764	Front Panel
37	009009	Bezel
38	009697	8-32 X 1/2" Screw
39	009136	Bezel Clip
40	009753	Left Bulk Head

COMPLETE PARTS LIST (continued)

NO	575 EC PART NO	DESCRIPTION
42	009752	Right Bulkhead
43	009612	Roller Ramp
44	009016	Reflector
45	009135	Air Deflector
46	009763	Cover
47	009107	Thermostat Temp Limit
48	009108	Thermostat Fan Control
49	009141	Lamp Socket
50	009555	Universal Lamp Panel
51	009113	8-32 x 5/8" Screw
52	008047	Strain Relief
53	009544	Universal Bushing
54	009611	Spacer
55	009613	Ramp Panel
56	009117	8-32 Nut
57	009111	6-32 x 2" Screw
58	009046	Toast Switch (Hall Effects)

* If Requested For a detailed listing of electrical components and wires, see Figure 5 on page 13

575 EXPANDED DRAWING

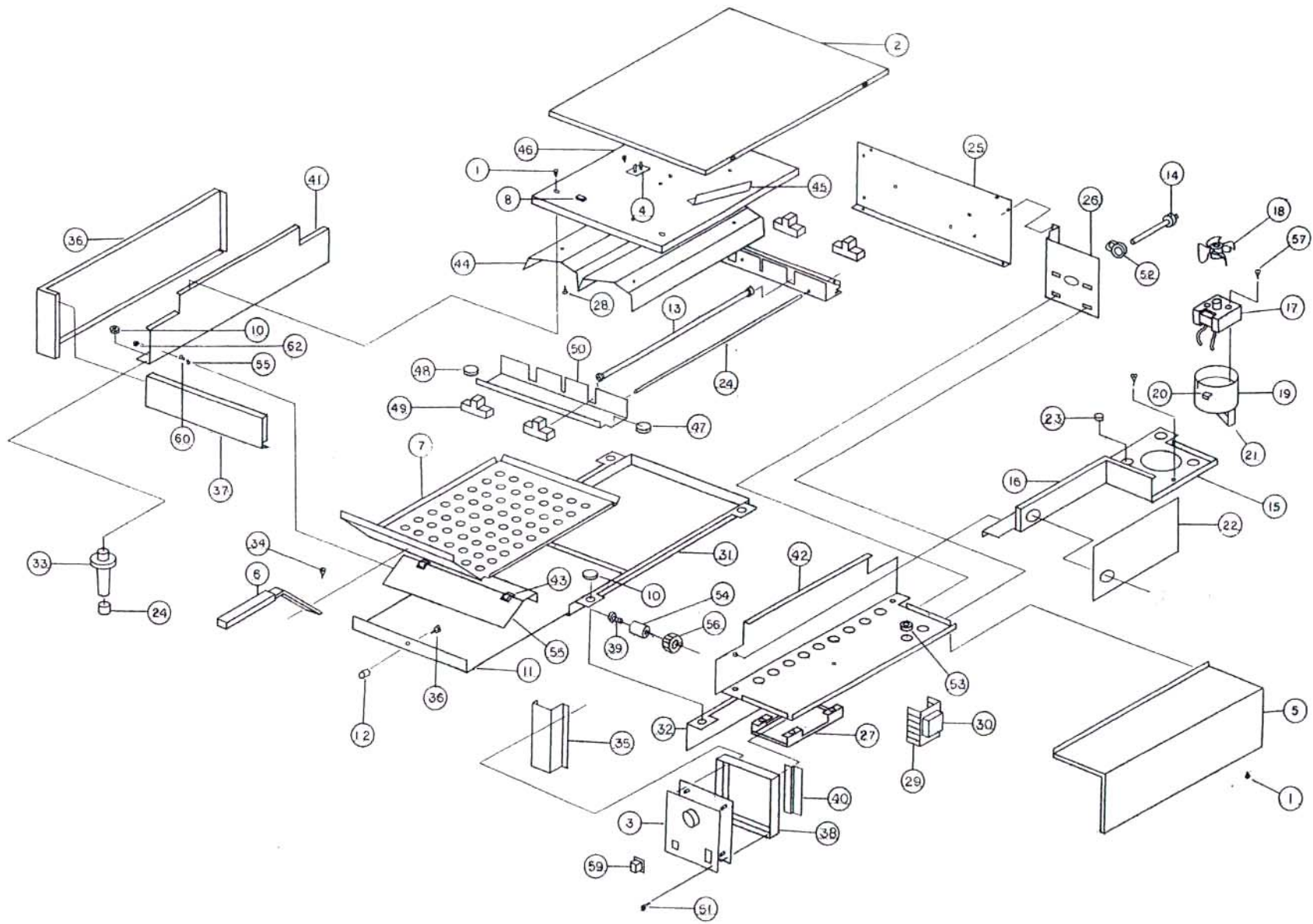


Figure 4. Expanded View Drawing

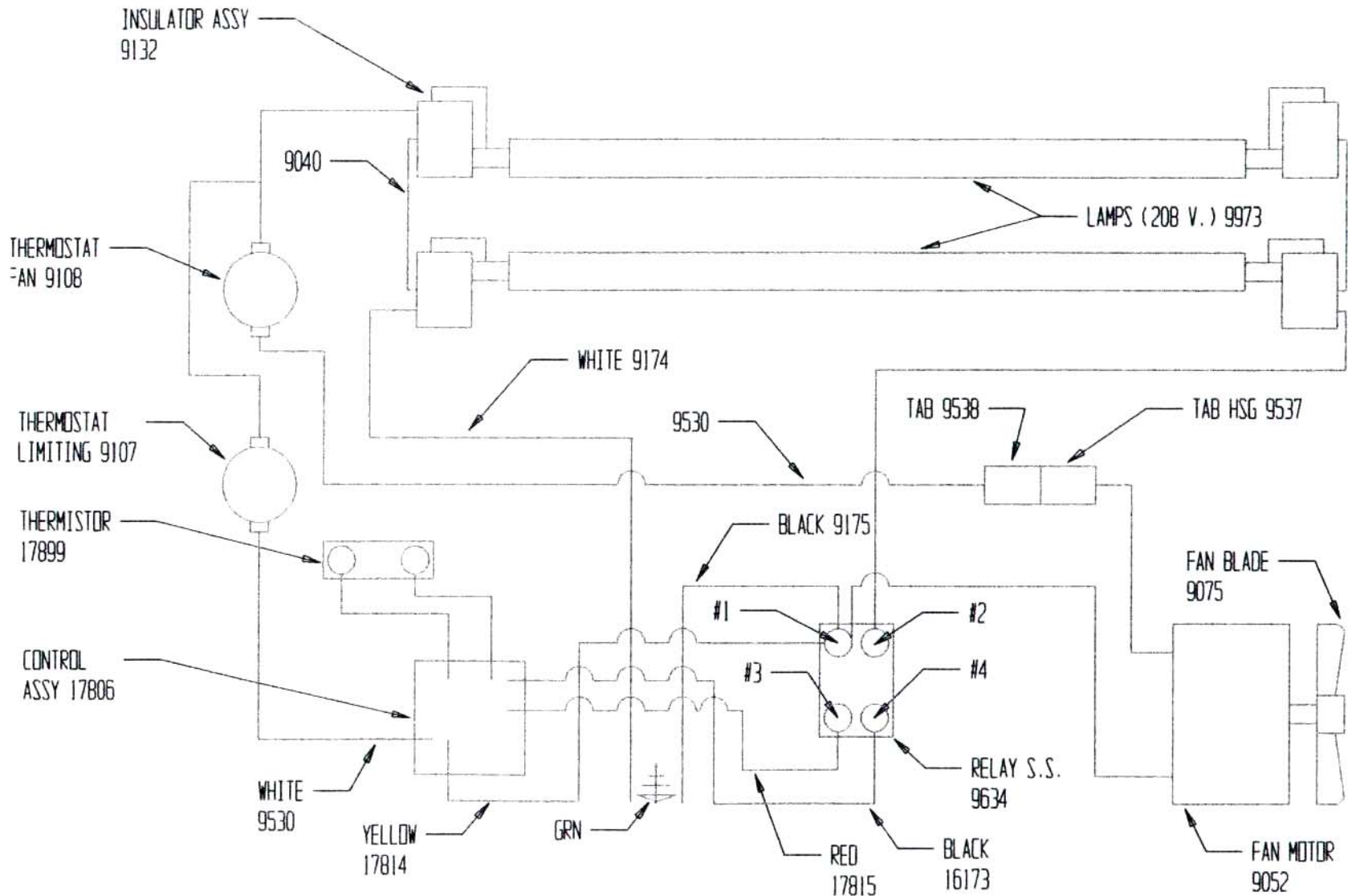


Figure 5. 575 EC Wiring Diagram