

Z40

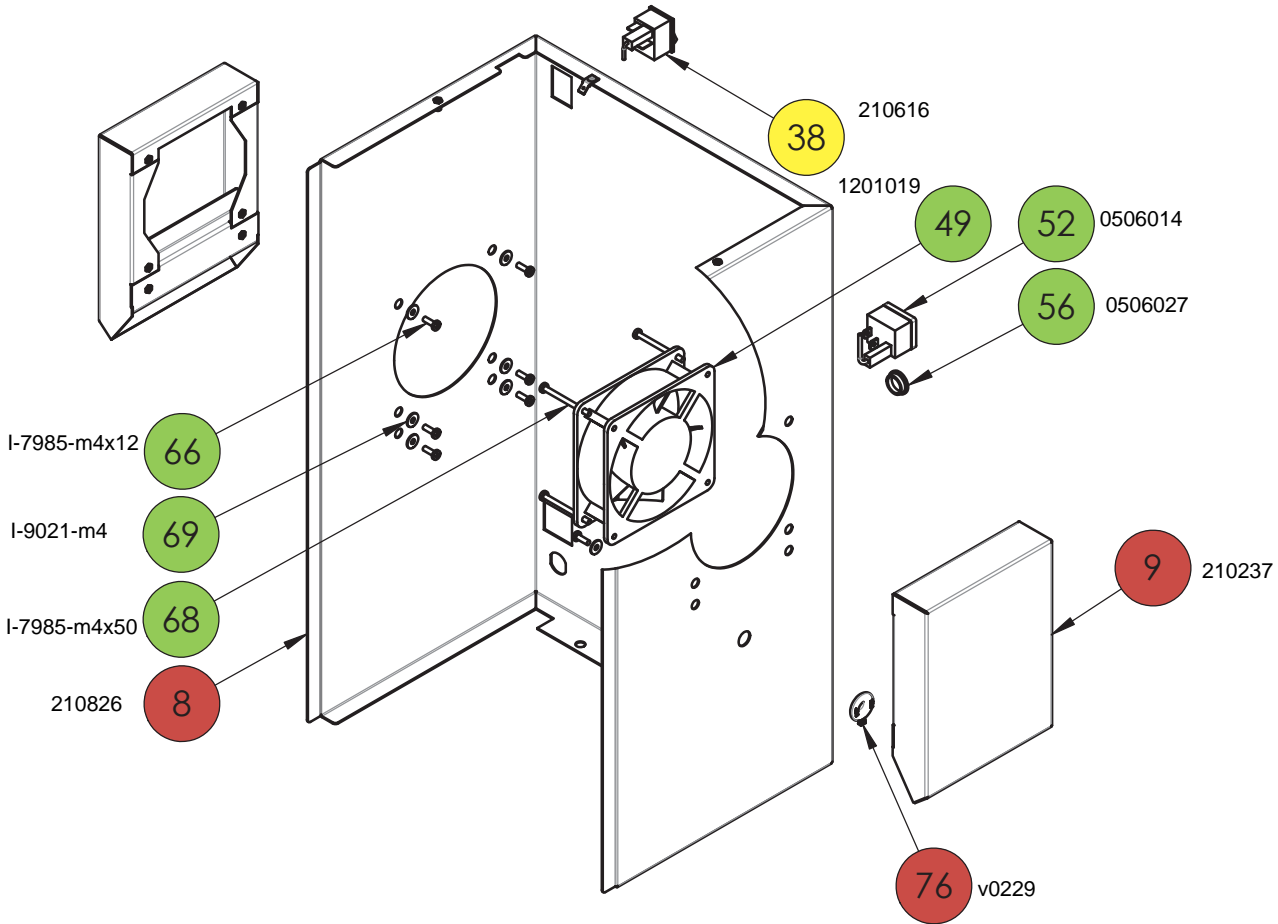
Despiece
Exploded View

COLOR COMPATABILITY Z40C / Z40 2.0

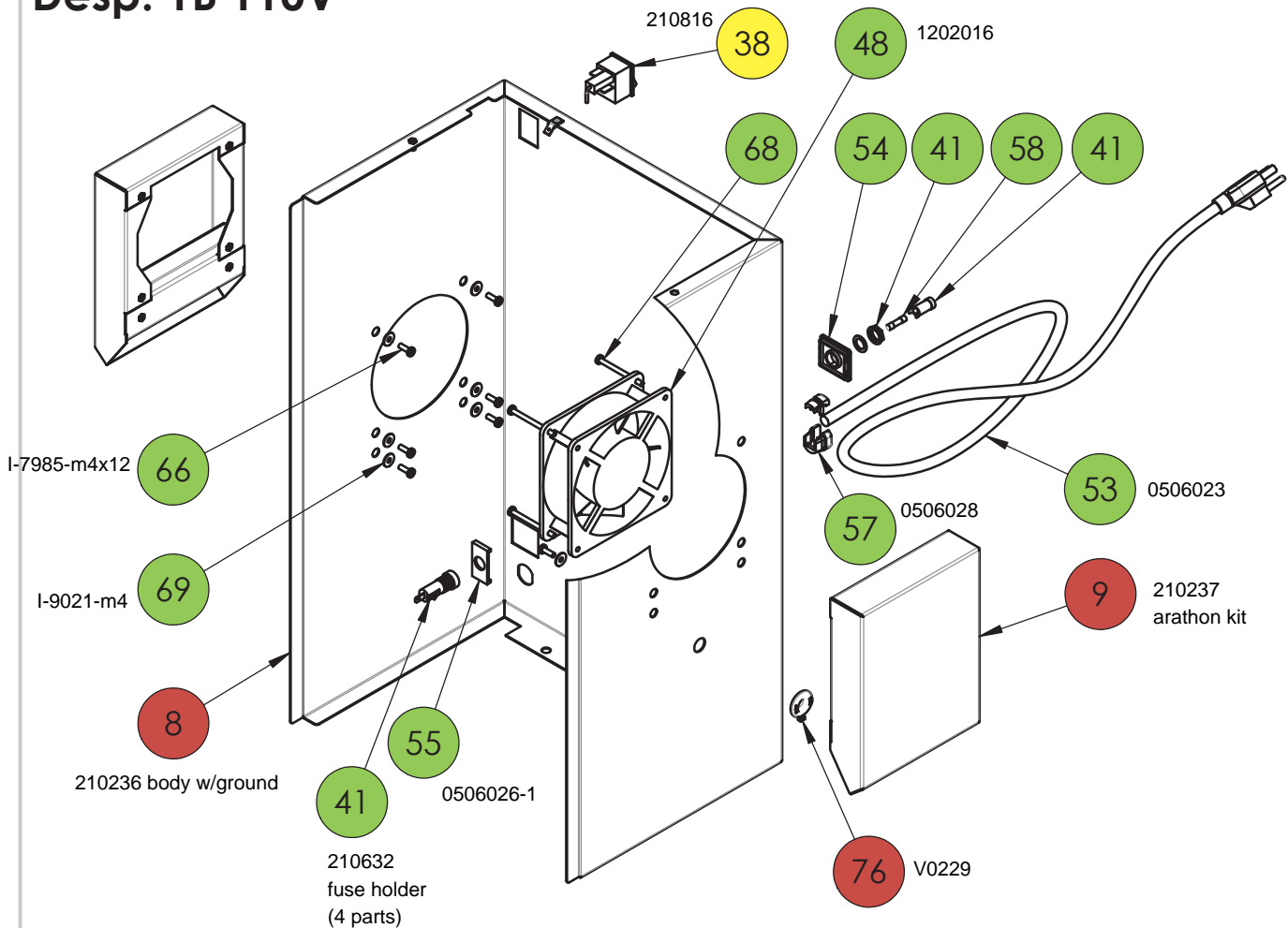


ZUMM 

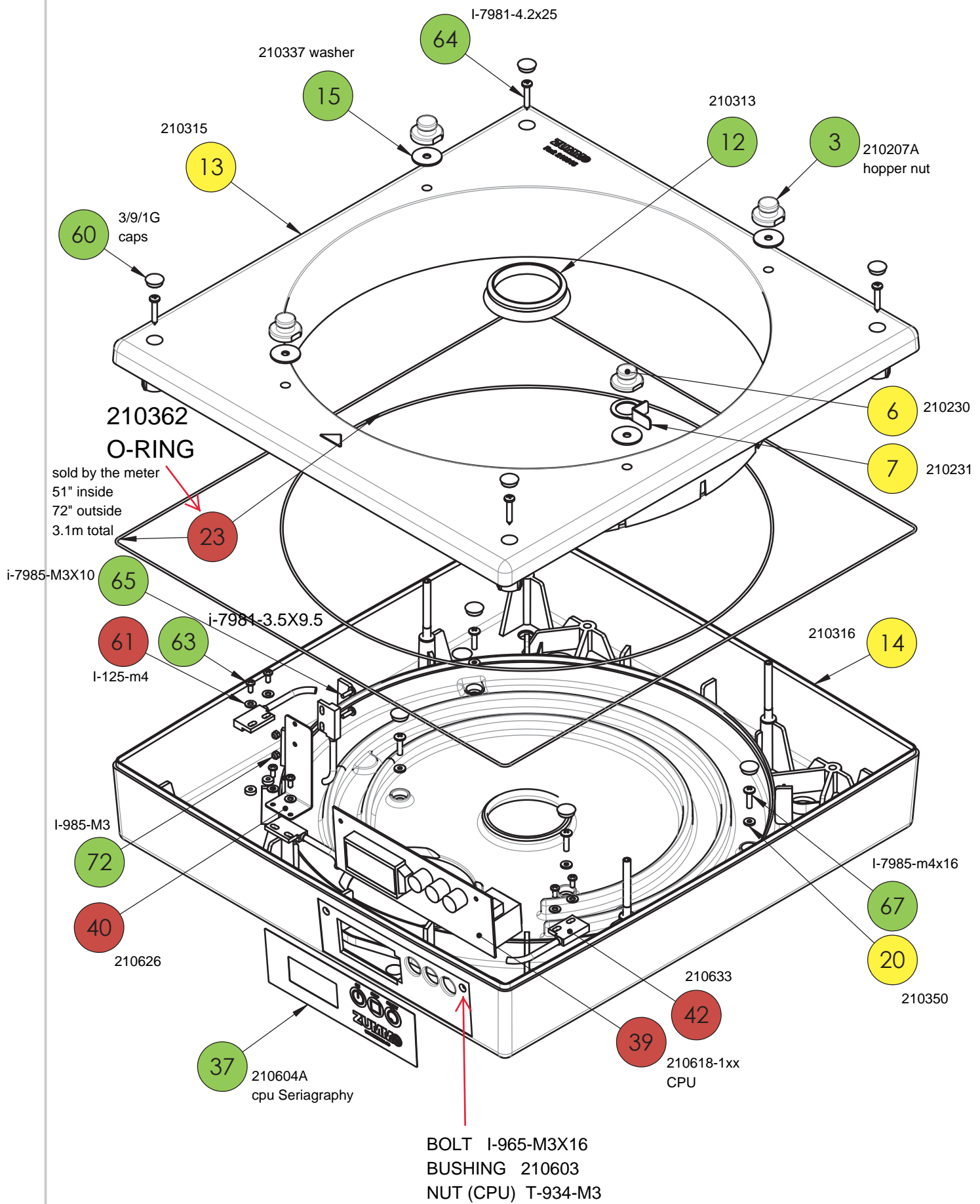
Desp. 1A 220V



Desp. 1B 110V

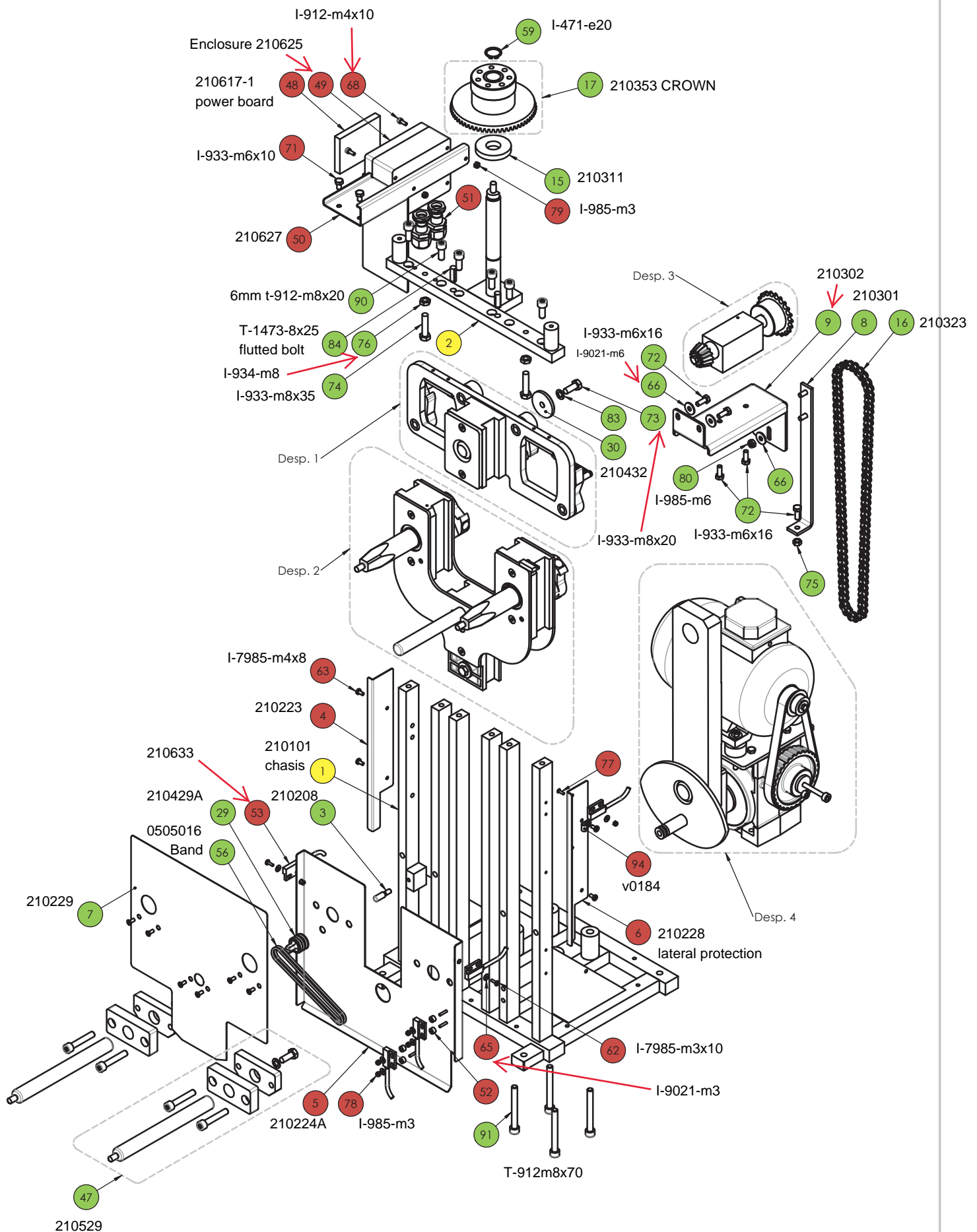


Desp. 2

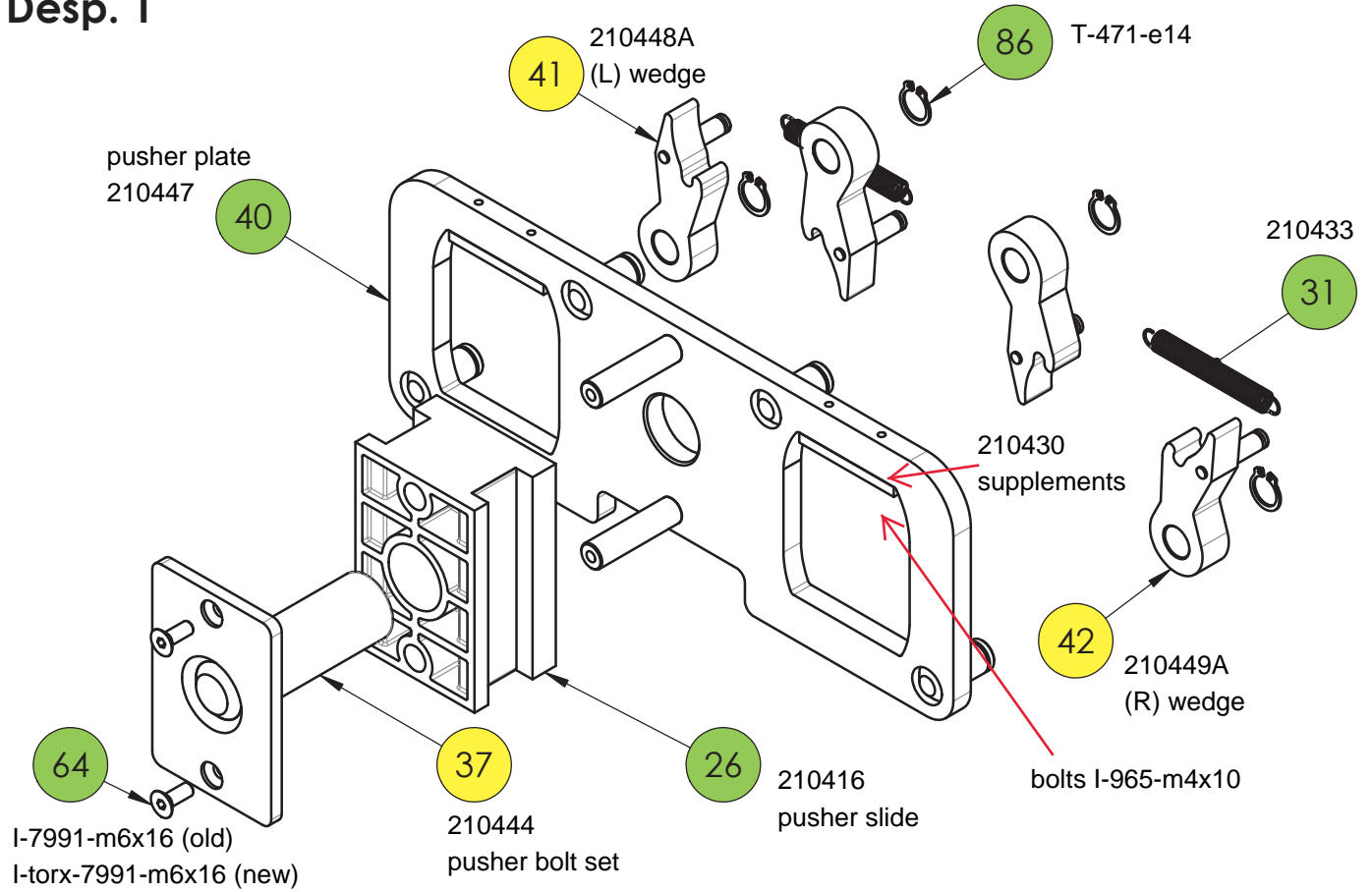


Nº	Denominación	Denomination	Ref.
1	CARATULA Z40	FRONT COVER	210203
2	LATERAL CARATULA 2.0	SIDE COVER 2.0	210204D
3	TUERCA TOLVA Z40	HOPPER NUT	210207A
4	TAPA BASE	BASE LID	210210
5	SOPORTE Z40 COMPLETO	COMPLETE SUPPORT Z40	210227
6	TUERCA TOLVA BLOQUEO	HOPPER BLOCK NUT	210230
7	CHAPA BLOQUEO TOLVA	HOPPER BLOCK SHEET	210231
8	CUERPO Z40 + TOMA TIERRA	Z40 BODY Z40 WITH GROUND	210236
9	KIT AIREACION	AERATION KIT	210237
10	SUBCONJUNTO FRENTE Z40 2.0	SUBSET FRONT Z40 2.0	210239
11	APANTALLAMIENTO Z40 2.0	SCREEN PLATE Z40 2.0	210240
12	RETEN V RING VS 060	RING GASKET	210313
13	PISTA TOLVA TAPA	HOPPER TRACK LID	210315
14	PISTA TOLVA BASE	HOPPER TRACK BASE	210316
15	ARANDELA TECHO Z40	WASHER SQUEEZER TOP 40	210337
16	SEPARADOR 53-76	REGULAR FRUIT CLASSIFIER	210345
17	SEPARADOR 64-88	LARGE FRUIT CLASSIFIER	210346
18	SEPARADOR 77-100	EXTRA-LARGE FRUIT CLASSIFIER	210347
19	SEPARADOR INFERIOR	LOWER FRUIT CLASSIFIER	210348
20	JUNTA D9x3,5x1,5	D9/3.5X1.5 SEAL	210350
21	CESTA EXTERIOR COMPLETA	COMPLETE EXTERNAL BASKET	210352
22	CESTA Z40 COMPLETA	Z40 HOPPER BASKET	210354
23	HILO TORICO Ø2MM	O-RING CORD 2MM	210362
24	BANDEJA FILTRO	FILTER TRAY	210506C
25	CUCHILLA COMPLETA Z40	Z40 BLADE	210507A
26	BOLA EXTRA GRANDE Z40	EXTRA LARGE BALL Z40	210510
27	COPA EXTRA GRANDE Ø100	EXTRA LARGE CUP Z40	210511
28	BOLA GRANDE Ø80	LARGE BALL Z40	210512
29	COPA GRANDE Ø88	LARGE CUP	210513
30	BOLA MEDIANA Z40	REGULAR BALL Ø68	210514
31	COPA MEDIANA Z40	REGULAR CUP Ø76	210515
32	EJE MOTRIZ FILTRO	MOTOR FILTER SHAFT	210516A
33	EJE CONDUcido FILTRO	DRIVE FILTER SHAFT	210517A
34	FILTRO Z40	FILTER Z40	210518
35	RASQUETA FILTRO	PULP SCRAPER FILTER	210519
36	BANDEJA DE EXPRIMIDO Z40 COMPLETA	COMPLETE Z40 SQUEEZER TRAY	210530
37	SERIGRAFIA CPU Z40	CPU SERIGRAPHY Z40	210604A
38	INTERRUPTOR RED IP65	ROCKER SWITCH IP65	210616
39	PLACA CONTROL Z40 CON BARNIZ	Z40 CIRCUIT BOARD WITH VARNISH	210618-1
40	SOPORTE SENSOR TOLVA	BASKET SENSOR HOLDER	210626
41	PORTAFUSIBLE 5X20 16A IP67	FUSEHOLDER 5X20 16A IP67	210632
42	SENSOR MAGNETICO	MAGNETIC SENSOR	210633
43	BANDEJA GOTEO	Z40 DRIP TRAY	210803
44	REJILLA GOTEO	DRIP GRID	210804
45	CUBETA IZQUIERDA COMPLETA	COMPLETE BIN LEFT	210826
	CUBETA DERECHA COMPLETA	COMPLETE BIN RIGHT	210827
46	CUBETA IZQUIERDA 110V 60Hz	BIN LEFT 110V 60Hz	210830
	CUBETA DERECHA 110V 60Hz	BIN RIGHT 110V 60Hz	210831
47	TAPA CUBETA IZQUIERDA 110V 60Hz	LID LEFT BIN 110V 60Hz	210833
	TAPA CUBETA DERECHA 110V 60Hz	LID RIGHT BIN 110V 60Hz	210834
48	MOTOVENTILADOR 120X120 115V 60Hz	FAN MOTOR 120X120 115V 60Hz	1201016
49	MOTOVENTILADOR 120X120 230V 50Hz	FAN MOTOR 120X120 230V 50Hz	1201019
50	ANILLO MAGNÉTICO	RING MAGNETIC UNIT	1503002
51	TUERCA COPAS CON JUNTA	FASTENING NUT WITH RAKED JOINT	0505010A
52	BASE DE RED CON FUSIBLES	POWER BASE	0506014
53	CABLE RED HOMOL. UL. CSA Z05/Z08	ELECTRIC LEAD (UL-CSA STANDARD)	0506023
54	TAPA PORTAFUSIBLE	FUSE-HOLDER CAP	0506026
55	BRIDA PORTAFUSIBLE	FUSE-HOLDER FLANGE	0506026-1
56	TAPON PLASTICO Ø17.3	BLANKING PLUG 17.3	0506027
57	PRENSA CABLE (AGUJERO DE 19X16)	WIRE PRESS (19 X 16.8 MM)	0506028
58	FUSIBLE Ø5x20 6AMP	FUSE 5X20 6.3A	0506011
	FUSIBLE 16A UL/CSA	FUSE 16A UL/CSA	0506032
59	TAPA SOPORTES	SUPPORTS CAP	2/15
60	TAPON TECHO Z1	MACHINE GREY TOP BLANKING PLUG	3/9/1 G
61	INOX. ARANDELA PLANA M4 DIN-125	STAINLESS STEEL WASHER M4	I-125-M4
62	TORN. PHILLIPS ROSCA CHAPA Ø3,9x13 DIN-7981	S. STEEL CROSS RECESSED SCREW Ø3,9x13 DIN-7981	I-7981-D3,9x13
63	TORN. PHILLIPS ROSCA CHAPA Ø3,5x9,5 DIN-7981	S. STEEL CROSS RECESSED SCREW Ø3,9x9,5 DIN-7981	I-7981-Ø3,5x9,5
64	INOX. TOR. ROSCA CHAPA 4.2X25 DIN-7981	S. STEEL RECESSED SCREW Ø4,2x25 DIN-7981	I-7981-Ø4.2x25
65	TORNILLO M3X10 DIN-7985	S. STEEL CROSS RECESSED RAISED CHEESE HEAD SCREW M3X10	I-7985-M3x10

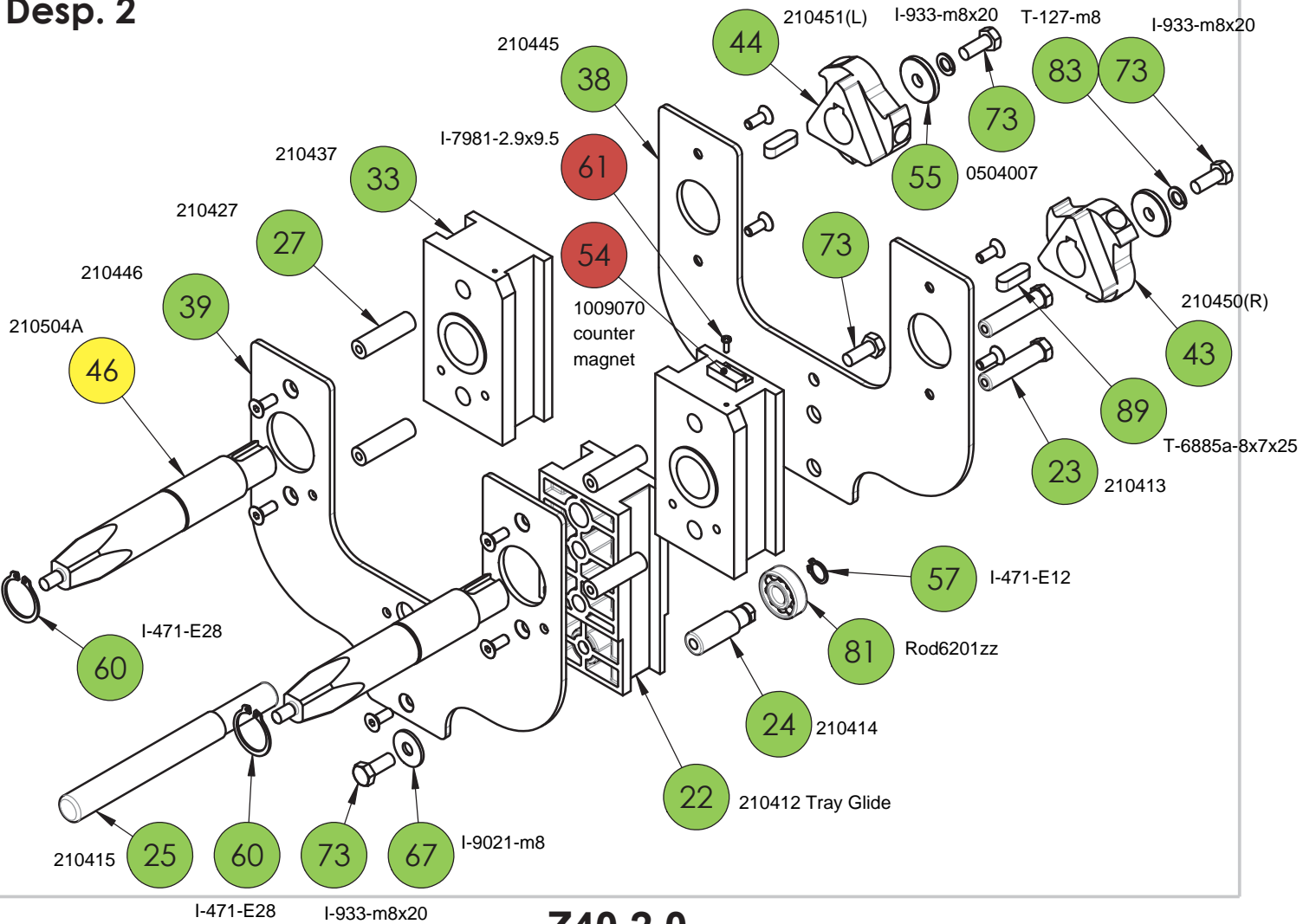
66	INOX. TORNILLO M4X12 DIN-7985	S. STEEL CROSS RECESSED RAISED CHEESE HEAD SCREW M4X12	I-7985-M4x12 Esp.
67	INOX.TORNILLO ALOMADO M4X16 DIN-7985	S. STEEL CROSS RECESSED RAISED CHEESE HEAD SCREW M4X16	I-7985-M4x16
68	INOX. TORNILLO M4X50 DIN-7985	S. STEEL CROSS RECESSED RAISED CHEESE HEAD SCREW M4X50	I-7985-M4x50
69	ARAND.PLANA ANCHA M4 DIN-9021	S. STEEL WASHER DIN-9021 M4	I-9021-M4
70	INOX. TOR. HEXAGONAL M6X10 DIN-933	S. STEEL HEXAGON HEAD SCREW M6X10	I-933-M6x10
71	INOX. TORNILLO AVELL. M3X10 DIN-965	S. STEEL CROSS RECESSED COUNTERSUNK HEAD SCREW M3X10	I-965-M3X10
72	INOX. TUERCA FRENO M3 DIN-985	S. STEEL PREVAILING TORQUE HEXAGON NUT M3	I-985-M3
73	LLAVE ALLEN 5MM	ALLEN KEY 5MM	V0070
74	ARANDELA SUPLEMENTO BOLA	JUICETRAY WASHER	V0133
75	PROTECCION CUCHILLA	BLADE PROTECTION	V0193
76	TAPON D12	D12 PLUG	V0229



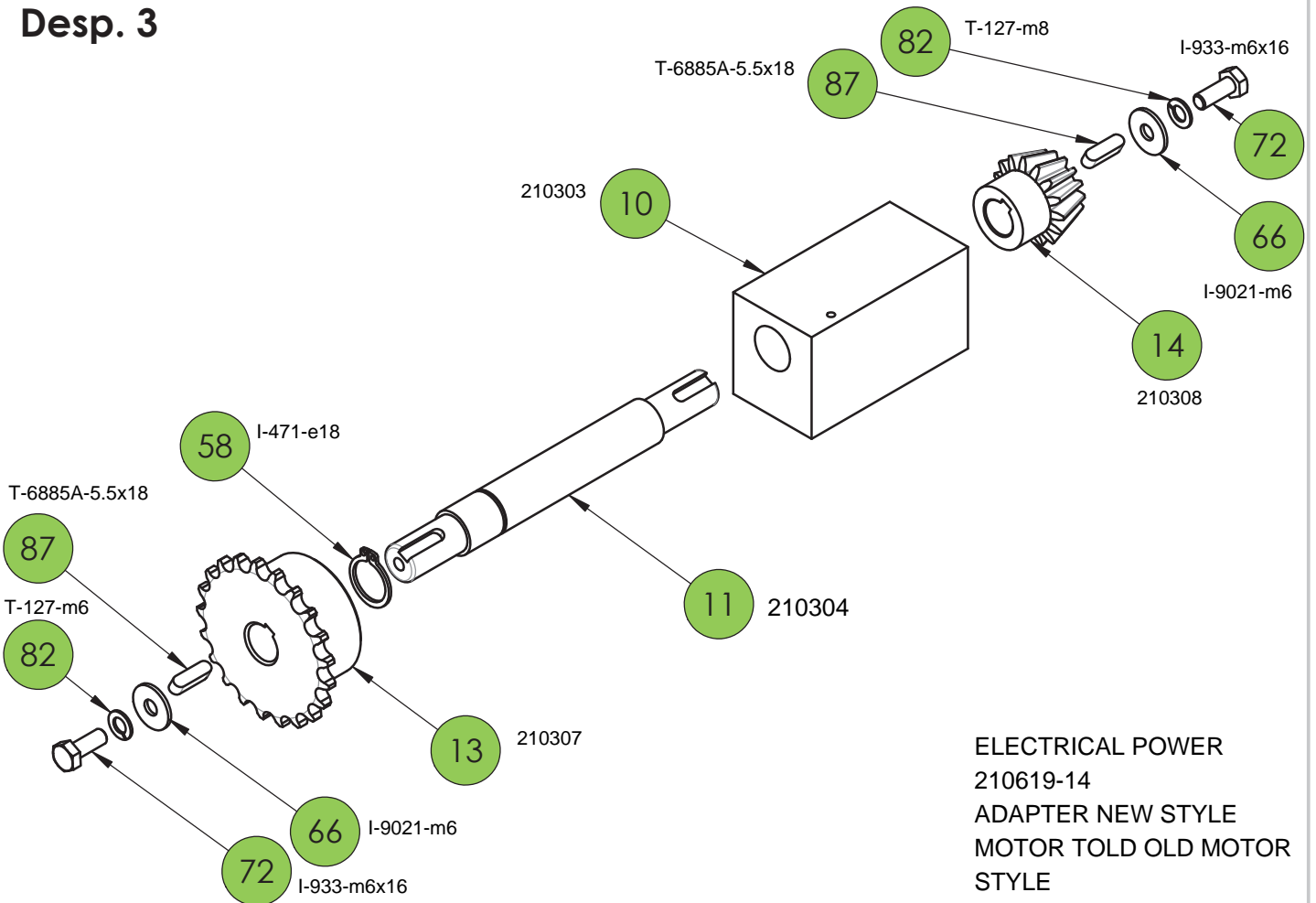
Desp. 1



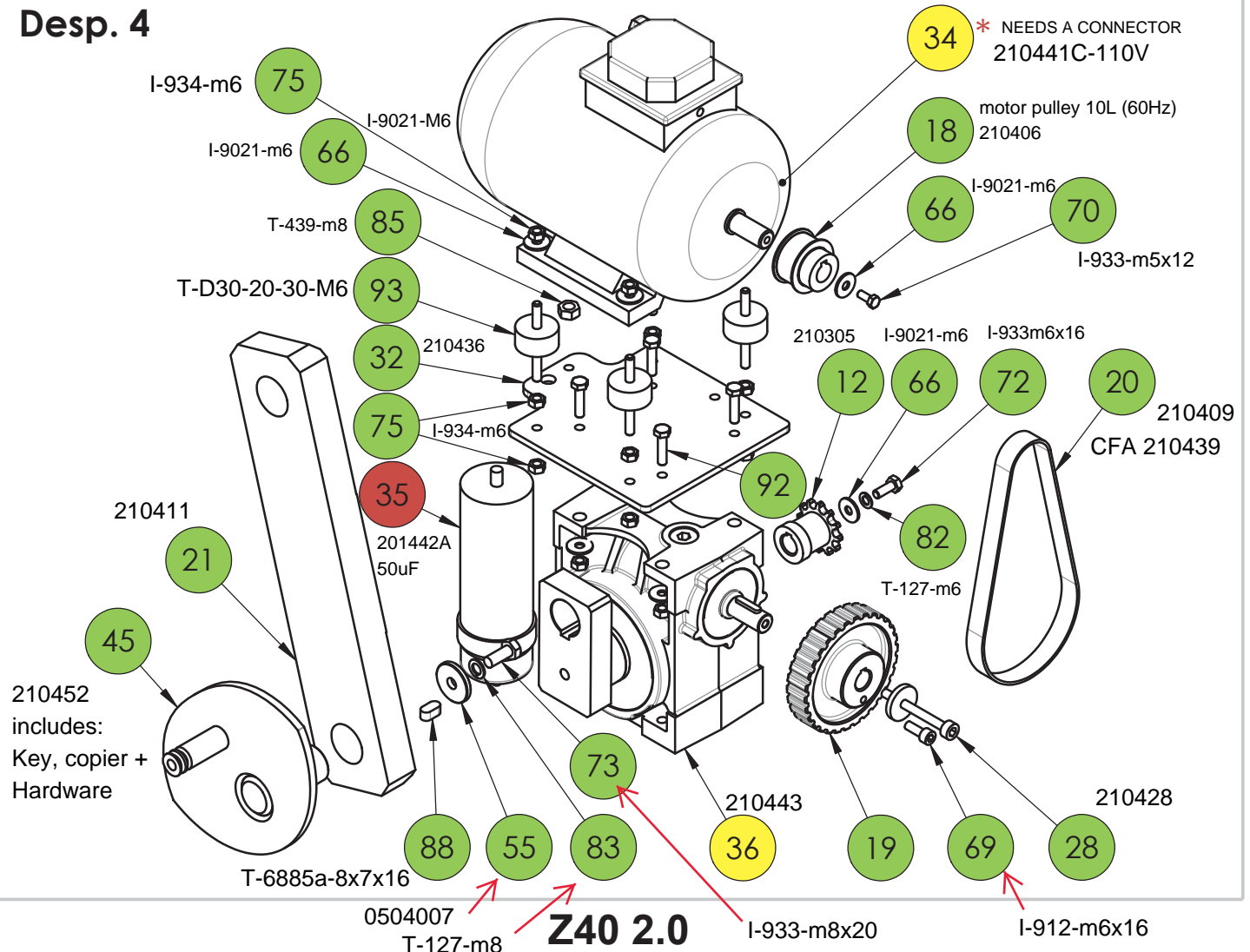
Desp. 2



Desp. 3



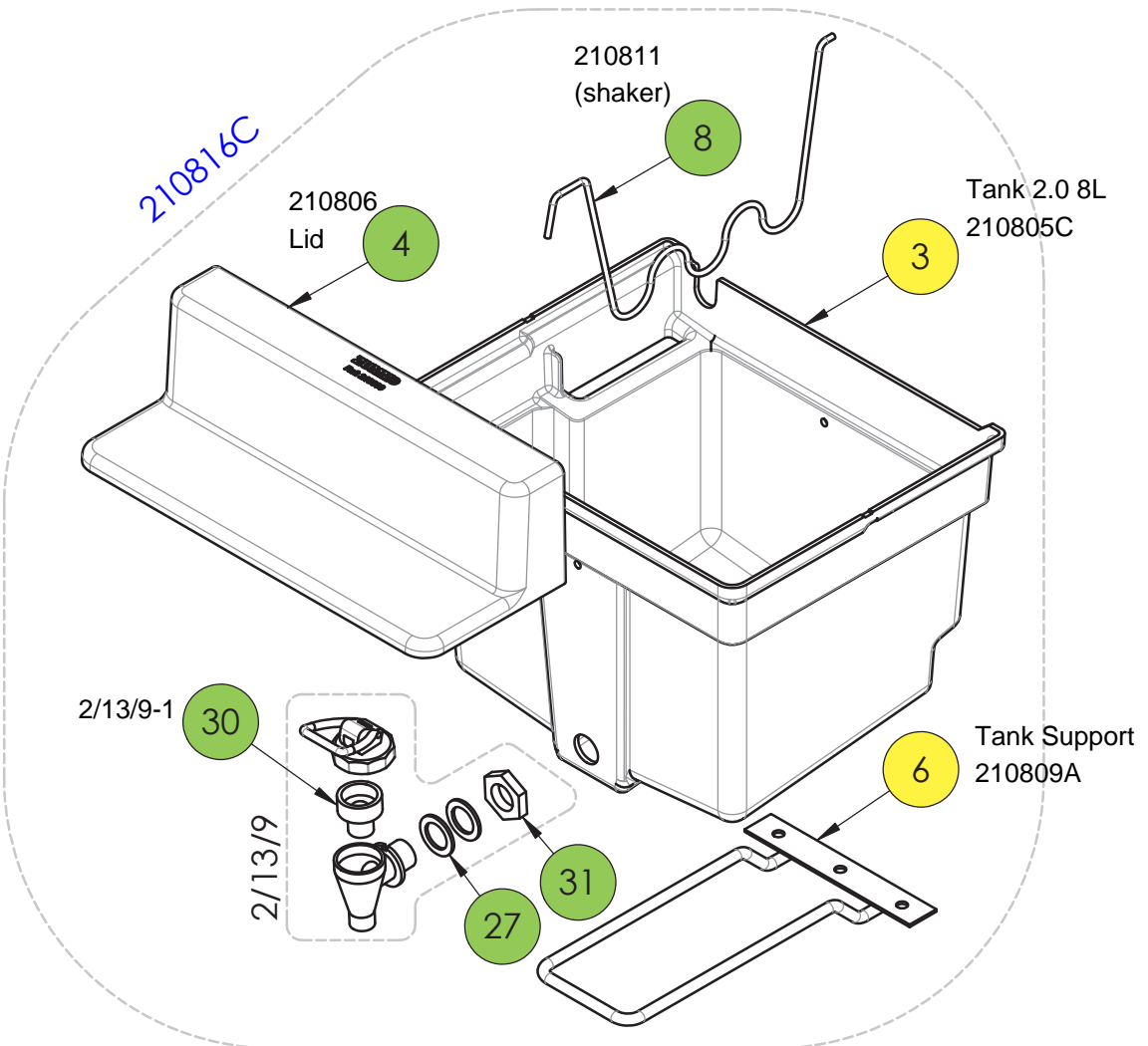
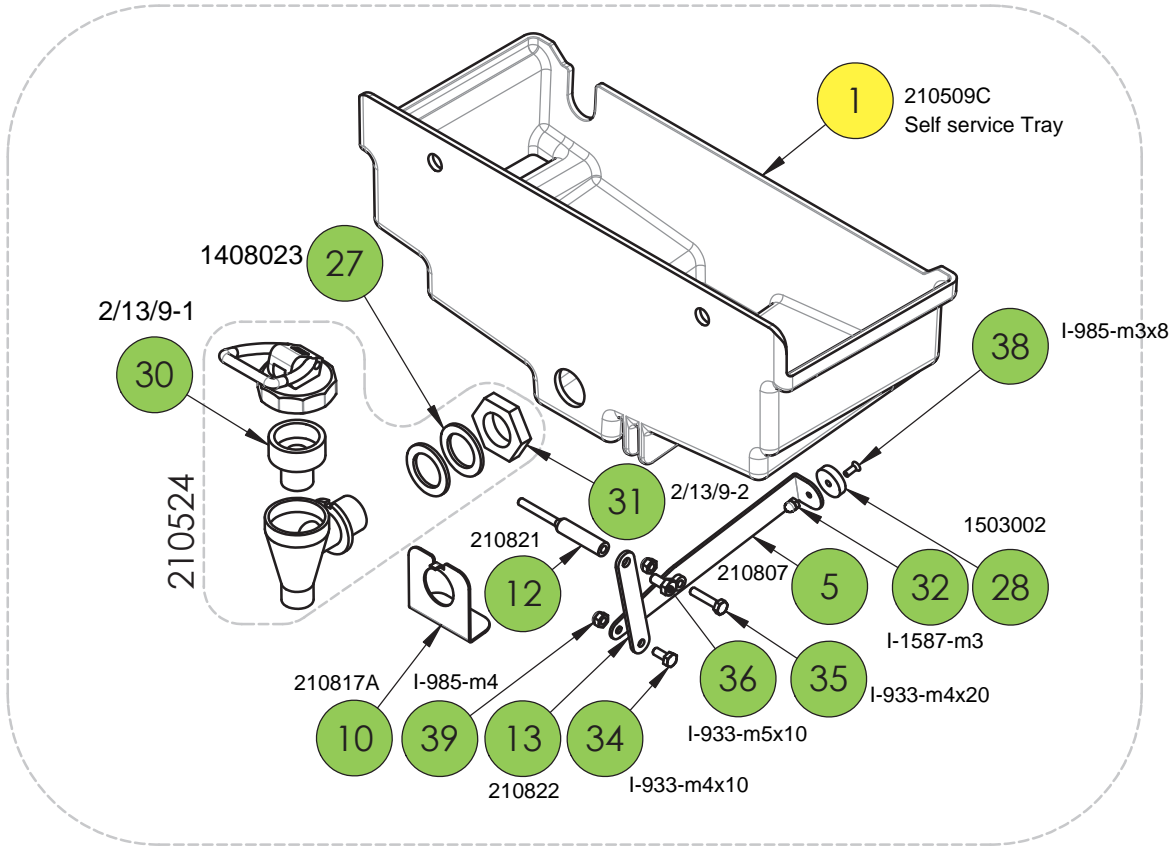
Desp. 4



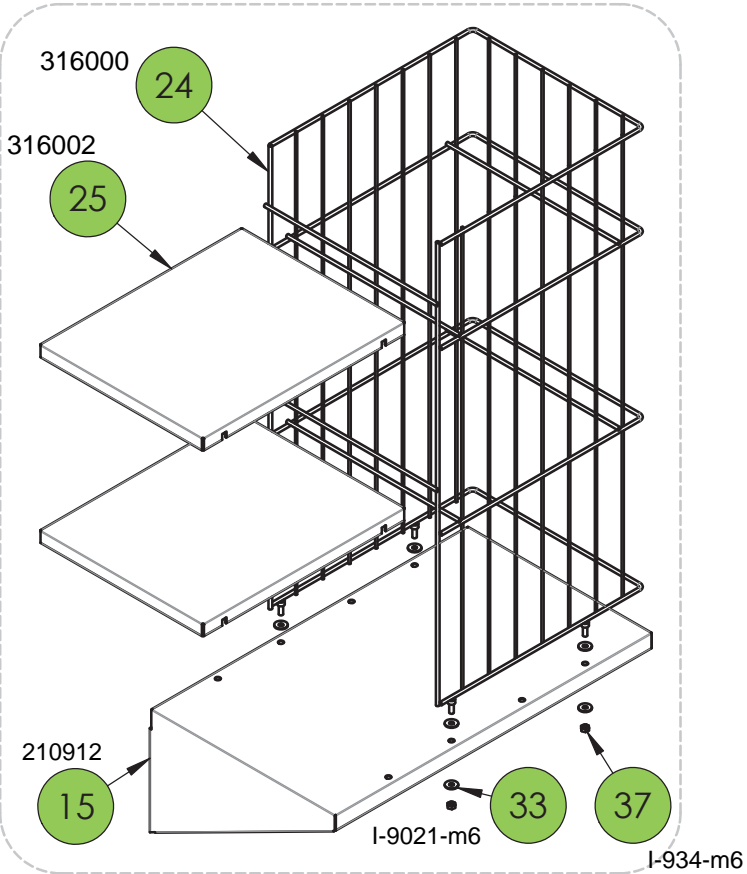
Marca	Denominación	Denomination	Ref.
1	CHASIS	CHASIS	210101
2	CIERRE CHASIS Z40	Z40 CHASIS LOCKING	210105
3	EJE POLEA FILTRO	PULLEY FILTER SHAFT	210208
4	PROTECCIÓN LATERAL IZQUIERDA	LHS LATERAL PROTECTION	210223
5	PROTECCION INFERIOR	UNDERSIDE PROTECTION	210224A
6	PROTECCION LATERAL DERECHA	RHS LATERAL PROTECTION	210228
7	CONJUNTO CUBRECORREDERAS	SET SLIDE COVER	210229
8	APOYO PIÑONES	PINION BACKING	210301
9	SOPORTE PIÑONES	PINION SUPPORT	210302
10	COJINETE PIÑONES	PINION BEARING	210303
11	EJE PIÑONES	PINION SHAFT	210304
12	PIÑÓN INFERIOR	LOWER PINION	210305
13	PIÑÓN SUPERIOR	UPPER PINION	210307
14	PIÑÓN CONICO	CONICAL PINION	210308
15	ARANDELA BASE CORONA	CROWN WHEEL BASE WASHER	210311
16	CADENA RODILLOS SIMPLE	CHAIN	210323
17	CONJUNTO CORONA	SET CONICAL CROWN	210353
18	POLEA MOTOR 10L (60Hz)	MOTOR PULLEY 10 L (60 Hz)	210406
	POLEA MOTOR 12L (50Hz)	MOTOR PULLEY 12L (50Hz)	210407
19	POLEA ENTRADA REDUCTOR 30L	GEAR BOX POLEY 30L	210408
20	CORREA 187L 050 50 DIENTES	187L 050 BELT	210409
21	BIELA	CONNECTING ROD	210411
22	CORREDERA CUCHILLA MECANIZADA	BLADE SLIDE	210412
23	BULON CORREDERA CUCHILLA	BLADE SLIDE BOLT	210413
24	EJE RODAMIENTO	BEARING SHAFT	210414
25	EJE CUCHILLA	BLADE SHAFT	210415
26	CORREDERA EMPUJADOR MECANIZADA	PUSHER SLIDE	210416
27	BULON CORREDERA COPA	CUP SLIDE BOLT	210427
28	TORNILLO DESBLOQUEO	UNBLOCK SCREW	210428
29	POLEA MOTRIZ FILTRO	MOTOR FILTER PULLEY	210429A
30	ARANDELA BULON CORREDERA	SLIDE BOLT WASHER	210432
31	MUELLE TRINQUETE	RATCHET SPRING	210433
32	BASE MOTOR	MOTOR ANCHORING	210436
33	CORREDERA COPA	CUP SLIDE	210437
	MOTOR (230V-50Hz)	MOTOR (230V-50Hz)	210441
34	MOTOR (220V-60Hz)	MOTOR (220V-60Hz)	210441B
	MOTOR (110V-60Hz)	MOTOR (110V-60Hz)	210441C
	MOTOR (240/250V-50Hz)	MOTOR (240/250V-50Hz)	210441D
35	CONDENSADOR 16µF CON CABLE Y CONECTOR	CAPACITOR 16µF WITH CABLE AND CONNECTOR	210442
	CONDENSADOR 50µF CON CABLE Y CONECTOR	CAPACITOR 50µF WITH CABLE AND CONNECTOR	210442A
	CONDENSADOR 12µF CON CABLE Y CONECTOR	CAPACITOR 12µF WITH CABLE AND CONNECTOR	210442B
36	REDUCTOR CON EJE Z40	GEAR BOX WITH SHAFT Z40	210443
37	CONJUNTO BULÓN EMPUJADOR	PUSHER BOLT SET	210444
38	CONJUNTO CHAPA UNION INTERIOR	SET INSIDE JOINT PLATE	210445
39	CONJUNTO CHAPA EXTERIOR	SET OUTSIDE JOINT PLATE	210446
40	CONJUNTO CHAPA EMPUJADORA	SET PUSHER PLATE	210447
41	CUÑA IZQUIERDA	LEFT WEDGE	210448A
42	CUÑA DERECHA	RIGHT WEDGE	210449A
43	CONJUNTO TRINQUETE DERECHO	SET RIGHT RATCHET	210450
44	CONJUNTO TRINQUETE IZQUIERDA	SET LEFT RATCHET	210451
45	CONJUNTO COPIADOR REPUESTO	CYCLE COPIER SET REPLACEMENT	210452
46	EJE COPA	CUP SHAFT	210504A
47	CONJUNTO EJE BANDEJA	SET TRAY SHAFT	210529
48	PLACA POTENCIA Z40 CON BARNIZ	Z40 POWER BOARD WITH VARNISH	210617-1
49	CAJA ALIMENTACION MECANIZADA	POWER BOARD ENCLOSURE	210625
50	SOPORTE CAJA ALIMENTACION	POWER SUPPLY BOX SUPPORT	210627
51	PRENSACABLES M16	WIRE PRESS M16	210628
52	SEPARADOR D3.2x8x5	D3.2X8X4 SEPARATOR	210630
53	SENSOR MAGNETICO	MAGNETIC SENSOR	210633
54	UNIDAD MAGNETICA	MAGNETIC UNIT	1009070
55	ARANDELA BULON Y PIÑONES	BOLT & PINIONS WASHER	0504007
56	GOMA EXTRACCION CORTEZAS	PEEL EXTRACTING BANDS	0505016
57	ANILLO DE SEGURIDAD Ø12 DIN-471 INOX.	S. STEEL RETAINING RING FOR SHAFT Ø12	I-471-E12
58	ANILLO DE SEGURIDAD Ø18 DIN-471 INOX.	S. STEEL RETAINING RING FOR SHAFT Ø18	I-471-E18
59	ANILLO DE SEGURIDAD Ø20 DIN-471 INOX.	S. STEEL RETAINING RING FOR SHAFT Ø20	I-471-E20
60	ANILLO DE SEGURIDAD Ø28 DIN-471 INOX.	S. STEEL RETAINING RING FOR SHAFT Ø28	I-471-E28
61	TORN. PHILLIPS ROSCA CHAPA Ø3,5x9,5 DIN-7981	S. STEEL CROSS RECESSED SCREW Ø3,5x9,5 DIN-7981	I-7981-Ø2,9x9,5
62	TORNILLO M3X10 DIN-7985	S. STEEL CROSS RECESSED RAISED CHEESE HEAD SCREW M3X10	I-7985-M3x10
63	TORNILLO M4X8 DIN-7985	S. STEEL CROSS RECESSED RAISED CHEESE HEAD SCREW M4X8	I-7985-M4x8

64	TORN. HEXAG. CAB. AVELL. M6x16 DIN-7991 INOX.	S. STEEL HEXAGON SOCKET COUNTERSUNK HEAD SCREW M6X16	I-7991-M6x16
65	ARAND.PLANA ANCHA M3 DIN-9021	S. STEEL WASHER DIN-9021 M3	I-9021-M3
66	ARAND.PLANA ANCHA M6 DIN-9021	S. STEEL WASHER DIN-9021 M6	I-9021-M6
67	ARAND.PLANA ANCHA M8 DIN-9021	S. STEEL WASHER DIN-9021 M8	I-9021-M8
68	INOX. TOR. ALLEN M4X10 DIN-912	S. STEEL HEXAGON SOCKET HEAD CAP SCREW M4X10	I-912-M4x10
69	INOX. TOR. ALLEN M6X16 DIN-912	S. STEEL HEXAGON SOCKET HEAD CAP SCREW M6X16	I-912-M6x16
70	TORNILLO HEXAG. M5X12 DIN-933	S. STEEL HEXAGON HEAD SCREW M5X12	I-933-M5x12
71	TORNILLO HEXAG. M6X10 DIN-933	S. STEEL HEXAGON HEAD SCREW M6X10	I-933-M6x10
72	TORNILLO HEXAG. M6X16 DIN-933	S. STEEL HEXAGON HEAD SCREW M6X16	I-933-M6x16
73	TORNILLO HEXAG. M8X20 DIN-933	S. STEEL HEXAGON HEAD SCREW M8X20	I-933-M8x20
74	TORNILLO HEXAG. M8X35 DIN-933	S. STEEL HEXAGON HEAD SCREW M8X35	I-933-M8x35
75	TUERCA HEXAG. M6 DIN-934	S. STEEL HEXAGON NUT M6	I-934-M6
76	TUERCA HEXAG. M8 DIN-934	S. STEEL HEXAGON NUT M8	I-934-M8
77	INOX. TORN AVELL M3X10 DIN 965	S. STEEL CROSS RECESSED COUNTERSUNK HEAD SCREW M3X10	I-965-M3x10
78	TUERCA AUTOSEGURO INOX. M3 DIN-985	S. STEEL PREVAILING TORQUE HEXAGON NUT M3	I-985-M3
79	TUERCA AUTOSEGURO INOX. M4 DIN-985	S. STEEL PREVAILING TORQUE HEXAGON NUT M4	I-985-M4
80	TUERCA AUTOSEGURO INOX. M6 DIN-985	S. STEEL PREVAILING TORQUE HEXAGON NUT M6	I-985-M6
81	RODAMIENTO REF. 6201ZZ	BALLS-BEARING 6201ZZ	ROD. 6201ZZ
82	ARANDELA GROWER M6 DIN-127	SPRING LOCK WASHER M6	T-127-M6
83	ARANDELA GROWER M8 DIN-127	SPRING LOCK WASHER M8	T-127-M8
84	PASADOR ESTRIADO Ø8x25 DIN-1473	FLUTED BOLT Ø8x25 DIN-1473	T-1473-Ø8x25
85	TUERCA HEXAGONAL BAJA M8 DIN-439	HEXAGON THIN NUTS DIN 439	T-439-M8
86	ANILLO DE SEGURIDAD Ø14 DIN-471	SAFETY RING E-18 DIN-471	T-471-E14
87	CHAVETA 5X5X18 DIN-6885A	COTTER 5X5X18 DIN-6885A	T-6885A-5x5x18
88	CHAVETA 8X7X16 DIN-6885A	COTTER 8X7X16 DIN-6885A	T-6885A-8x7x16
89	CHAVETA 8X7X25 DIN-6885A	COTTER 8X7X25 DIN-6885A	T-6885A-8x7x25
90	TOR. ALLEN M8X20 DIN-912 INOX.	HEXAGON SOCKET HEAD CAP SCREW M8X20	T-912-M8x20
91	TOR. ALLEN M8x70 DIN-912 CALIDAD 12.9	HEXAGON SOCKET HEAD CAP SCREW M8X70 (CAL 12.9)	T-912-M8x70
92	TORNILLO HEXAG. M6X25 DIN-933	HEX. SCREW M6X25 DIN-933	T-933-M6x25
93	AMORTIGUADOR SOPORTE MOTOR T-Ø30-20-30-M6	SHOCK ABSORBER Z40	T-D30-20-30-M6
94	SOPORTE Llave ALLEN 3MM	3MM ALLEN KEY SUPPORT	V0184

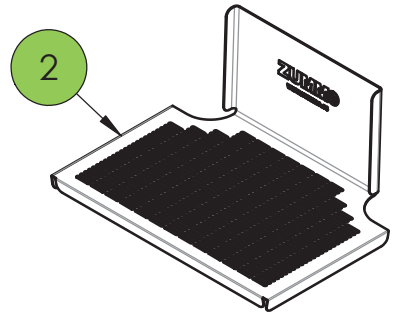
210521C



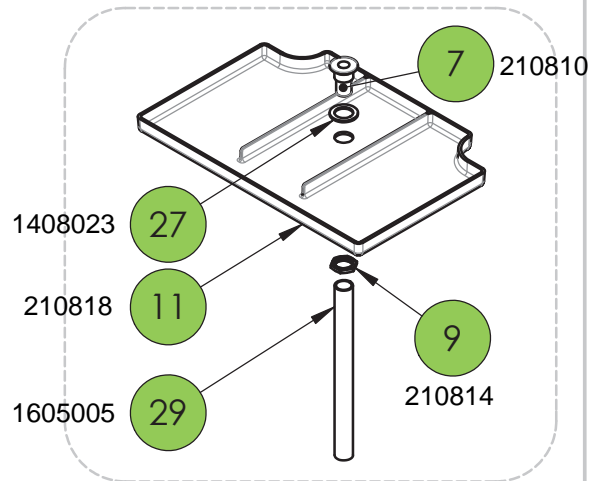
0316004



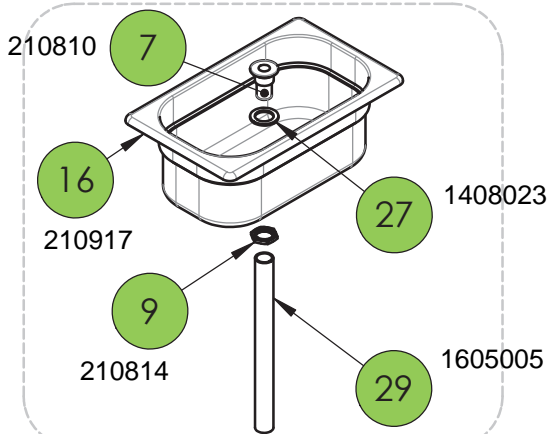
210804



210819

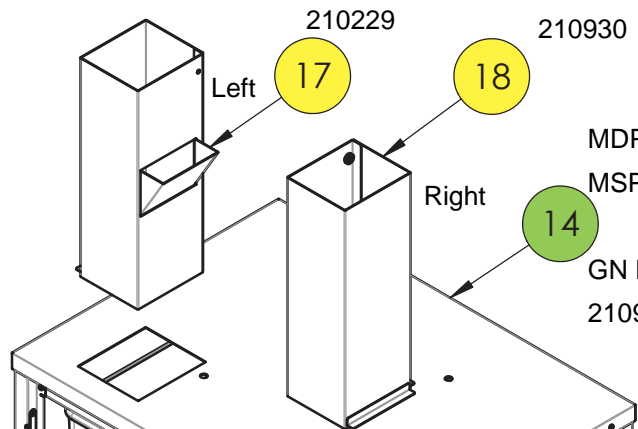


210926



210229

210930

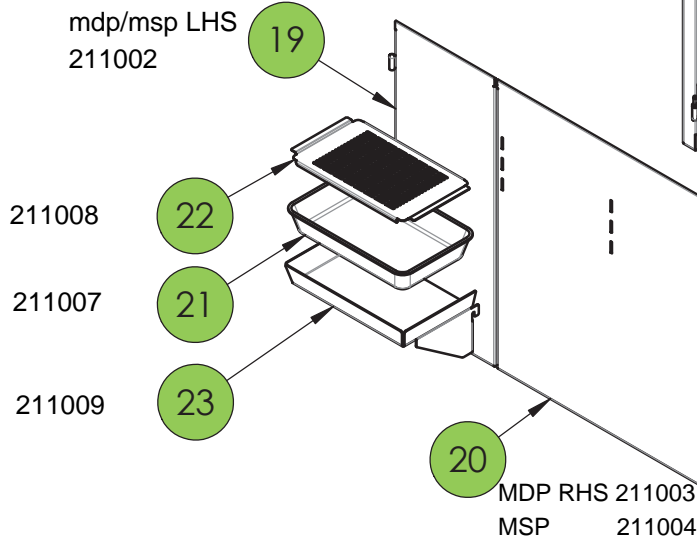


MDP lid 210901

MSP 210902

GN Bin z40 cabinet 210910

mdp/msp LHS 211002



1003033



Nº	Denominación	Denomination	Ref.
1	BANDEJA SELF SERVICE	Z40 SELF SERVICE TRAY	210509C
2	REJILLA GOTEÓ	DRIP GRID	210804
3	DEPOSITO 2.0 8L	TANK 2.0 8L	210805C
4	TAPA DEPOSITO	Z40 TANK LID	210806
5	SOPORTE IMAN	SELF SERVICE MAGNET HOLDER	210807
6	SOPORTE DEPOSITO Z40	Z40 TANK SUPPORT	210809A
7	DESAGUE BANDEJA GOTEÓ	DIRTY WATER DRIP-TRAY	210810
8	AGITADOR DEPOSITO Z40	Z40 TANK SHAKER	210811
9	TUERCA M20X1.5	M20X1.5 NUT	210814
10	CHAPA BLOQUEO GRIFO	BLOCKED FAUCET PLATE	210817A
11	BANDEJA GOTEÓ MECANIZADA	MECHANISED DRIP TRAY	210818
12	BULON PALANCA ACCTO.	BOLT LEVER MECHANISM	210821
13	PALANCA ACCIONAMIENTO	LEVER MECHANISM	210822
14	TAPA Z40 MDP	Z40 MDP LID	210901
	TAPA Z40 MSP	MSP Z40 LID	210902
	TAPA Z40 CUBETA	GN BIN Z40 CABINET COVER	210910
15	SOPORTE BOTELLERO	BOTTLE RACK SUPPORT	210912
16	CUBETA GN MECANIZADA	MECHANISED GN TRAY	210917
17	MANGA IZQUIERDA COMPLETA	COMPLETE LEFT CABINET CHUTE	210929
18	MANGA DERECHA COMPLETA	COMPLETE RIGHT CABINET CHUTE	210930
19	PUERTA IZQUIERDA MDP/MSP 2015	DOOR MDP/MSP LHS	211002
20	PUERTA DERECHA MDP 2015	MDP DOOR RHS	211003
	PUERTA DERECHA MSP 2015	MSP DOOR RHS	211004
21	BANDEJA GOTEÓ MSP	DRIP TRAY MSP	211007
22	REJILLA GOTEÓ MSP	DRIP GRILL MSP	211008
23	SOPORTE BANDEJA GOTEÓ	DRIP TRAY SUPPORT	211009
24	JAULA BOTELLERO	BOTTLE RACK BODY	0316000
25	BANDEJA BOTELLERO	BOTTLE RACK TRAY	0316002
26	CUBO 55 LITROS COLOR GRIS GRANITO	PEELS BASKET	1003033
27	JUNTA SILICONA GRIFO TOMLINSON	TOMLINSON SILICONE JOIN FAUCET	1408023
28	ANILLO MAGNÉTICO	RING MAGNETIC UNIT	1503002
29	GOMA DESAGUE	DIRTY WATER TUBE	1605005
30	CIERRE SILICONA GRIFO	SEAT CUP SILICONE TOMLINSON FAUCET	2/13/9-1
31	TUERCA GRIFO TOMLINSON	TOMLINSON TAP NUT	2/13/9-2
32	INOX. TUERCA CIEGA M3 DIN-1587	S. STEEL HEXAGON DOMED CAP NUT M3	I-1587-M3
33	INOX. ARAND. PLANA ANCHA M6 DIN-9021	S. STEEL WASHER DIN-9021 M6	I-9021-M6
34	INOX.TORN.HEXAGONAL DIN-933 M4x10	S. STEEL HEXAGON HEAD SCREW M4X10	I-933-M4X10
35	INOX.TORN.HEXAGONAL DIN-933 M4x20	S. STEEL HEXAGON HEAD SCREW M4X20	I-933-M4X20
36	INOX.TORN.HEXAGONAL DIN-933 M5x10	S. STEEL HEXAGON HEAD SCREW M5X10	I-933-M5X10
37	INOX. TUERCA HEXAG. M6 DIN-934	S. STEEL HEXAGON NUT M6	I-934-M6
38	INOX. TORN AVELL M3X8 DIN-965	S. STEEL CROSS RECESSED COUNTERSUNK HEAD SCREW M3X8	I-965-M3X8
39	INOX. TUERCA FRENO M4 DIN-985	S. STEEL PREVAILING TORQUE HEXAGON NUT M4	I-985-M4

- NEW PARTS THAT CAN BE USED IN Z40 AND Z40 2.0
- PARTS FOR USE ONLY IN Z40 2.0
- SAME PARTS FOR Z40 AND Z40 2.0

